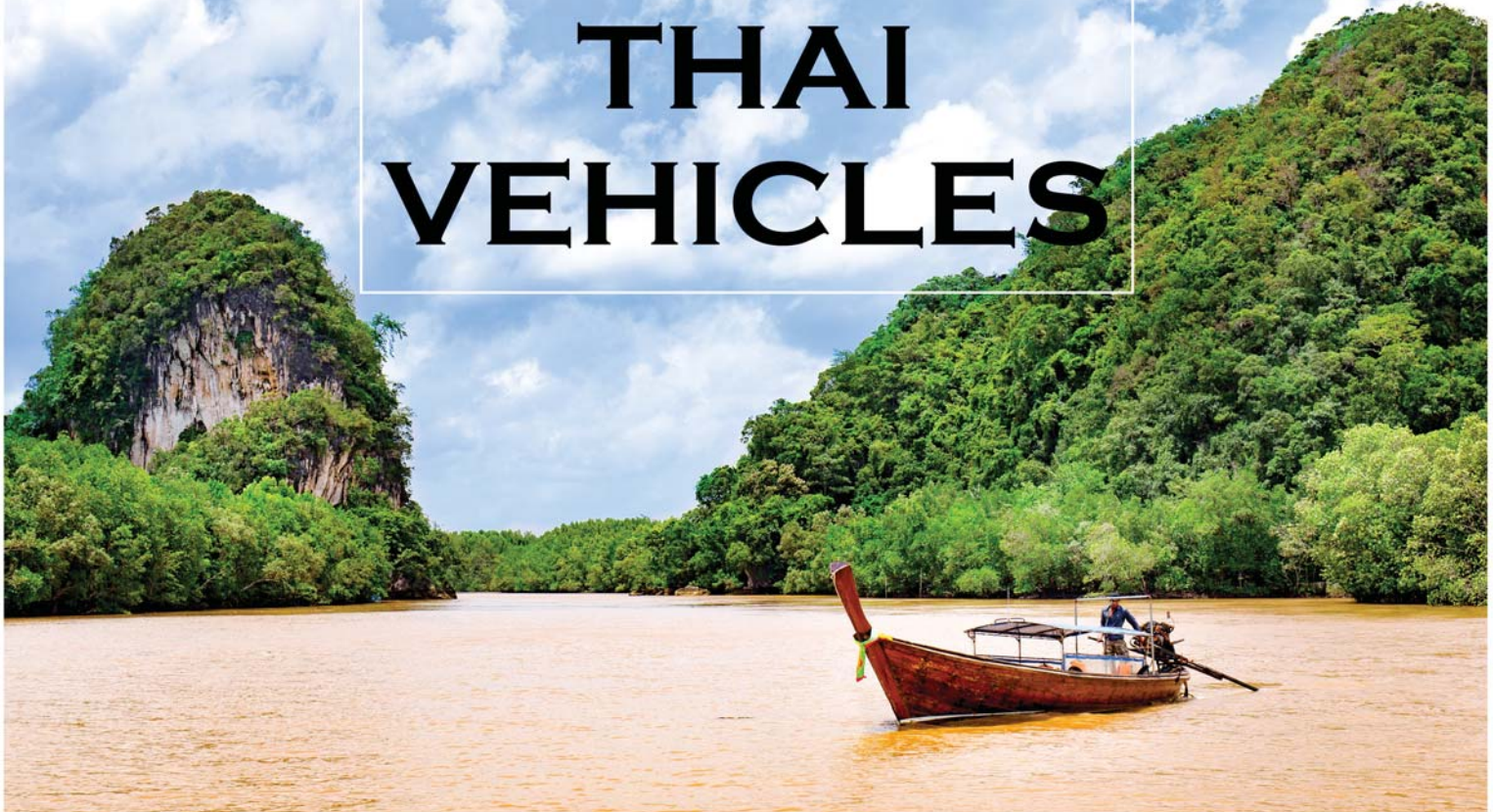


A TOUCH OF  
**THAI**  
**VEHICLES**





Tourism Authority of Thailand  
1600 New Phetchaburi Road, Makkasan,  
Ratchathevi, Bangkok 10400 THAILAND  
Tel. +6622505500  
TAT Contact Center : 1672  
[www.tourismthailand.org/tourismproduct](http://www.tourismthailand.org/tourismproduct)  
Copyright © 2016 Tourism Authority of Thailand

---



# CONTENT

---



**8**  
**BANGKOK**

**42**  
**KRABI PROVINCE**





**82**  
LAMPANG PROVINCE

**120**  
LOEI PROVINCE



# INTRODUCTION

---



## GET REAL THAI EXPERIENCE VIA LOCAL VEHICLES.

Following Thai style of traveling by hopping on local vehicles that give travelers real local experience. Moreover, it is a good opportunity for visitors to closely embrace graceful way of life and true beauty of places through the perspective of routes that local people travel on a daily basis.


This guidebook recommends new traveling experiences and suitable for all travelers, especially Free Independent Traveler (FIT). It suggests authentic activities such as exploring Bangkok by Tuk Tuk, getting on Rue Hua Tong (Long Tail Boat) to visit fantastic places in Krabi, slowly indulging the charm of Lampang on Rot Ma (Horse Drawn Carriage), and traveling around charming Loei by Skylab (Motor-tricycle).

In this “A Touch of Thai Vehicles” guidebook, we offer you traveling routes that will touch all your senses and last in your memory. You will certainly be amazed by the charming Thai way of life and true local experience throughout our 8 creative itineraries in 4 provinces.

## BANGKOK ROUTES

-  The Magnificent Lights of Old Town Bangkok
-  A Tuk Tuk Journey from Farm to Table



## KRABI ROUTES

-  A Search for Krabi Heritage & Treasures
-  Once in a Lifetime Tranquil Experience in Ao Luk

## LAMPANG ROUTES

-  A Beauty & Wellness Journey in Timeless Lampang
-  A Journey Back to Lampang Ancient Era

## LOEI ROUTES

-  The Art and the Legend of Phi Ta Khon
-  Chiang Kan 101: 360 Degree Immersion

We hope that these fascinating routes shall impress all guests who choose to visit Thailand and experience the real Thai hospitality. In the same time, with your travel, we together will preserve the charming local vehicles in order not to vanish in time.





# BANGKOK TUK TUK

---

**THE CITY OF ANGELS, WITH COUNTLESS STRIKING  
ATTRACTIONS WAITING FOR YOU TO EXPERIENCE.**

Thai capital city, with the longest name in the world, has continuously been one of the most popular destinations for travelers around the world, with its balanced mix of traditional arts, cultural charm, and sophistication of modern world. Apart from the well-known glamorous temples and historical sites that perfectly reflect Thai fine arts and interesting history, Thailand Tuk Tuk, the signature local transportation in Bangkok, is also equally famous, and has become a must that you cannot miss when visiting the city. And there are many more intriguing experiences awaiting you in this capital city of smiles.







## FYI

Originally, Tuk Tuk was a mini-truck used to transport objects and had entrance on both sides. It was later developed by adding a roof for passengers and building a rail on one side, leaving an open for entrance on the other for safety on the road.

Tuk Tuk was previously called 'Sam Lor Kruang (motorized tricycle)'. However, when foreigners visited Thailand and encountered with this type of vehicles, they could not manage the word, and instead called it 'Tuk Tuk' as the sound made by the engine. Since then, it has been commonly known in that name.

---

# TUK TUK

---

**THREE-WHEELED TAXI WITH ITS ICONIC ‘TUK TUK’ ENGINE SOUND IS A PROUDLY PRESENTED SIGNATURE OF BANGKOK THAT YOU MUST EXPERIENCE.**

Tuk Tuk, or motorized three-wheeled taxi was formerly imported from Japan to Thailand in 1960 to replace cycle rickshaws that were prohibited from running in the city.

Initially, only 30 motorized tricycles were imported from Japan, and had since been used widely in Yaowarat or Chinatown area. However, in 1972, Japanese company canceled manufacture of tricycles, resulting in loss of supply of spare parts of the vehicles. After that, Tuk Tuk spare parts manufacturing factory formerly known as Wat Karnchang Mechanic was established near an old Khlong Toei railroad, and later changed to Wat Industry Co., Ltd. The company has been changing all plates on the back of every Tuk Tuk to ‘THAILAND’. Therefore, Tuk Tuk Thailand has been a staple label up until now.



WAT PHO  
(THE TEMPLE OF RECLINING BUDDHA)

MAHAJETSADABADIN ROYAL PAVILION  
AND THE GIANT SWING

CHINATOWN

WAT ARUN RATCHAWARARAM

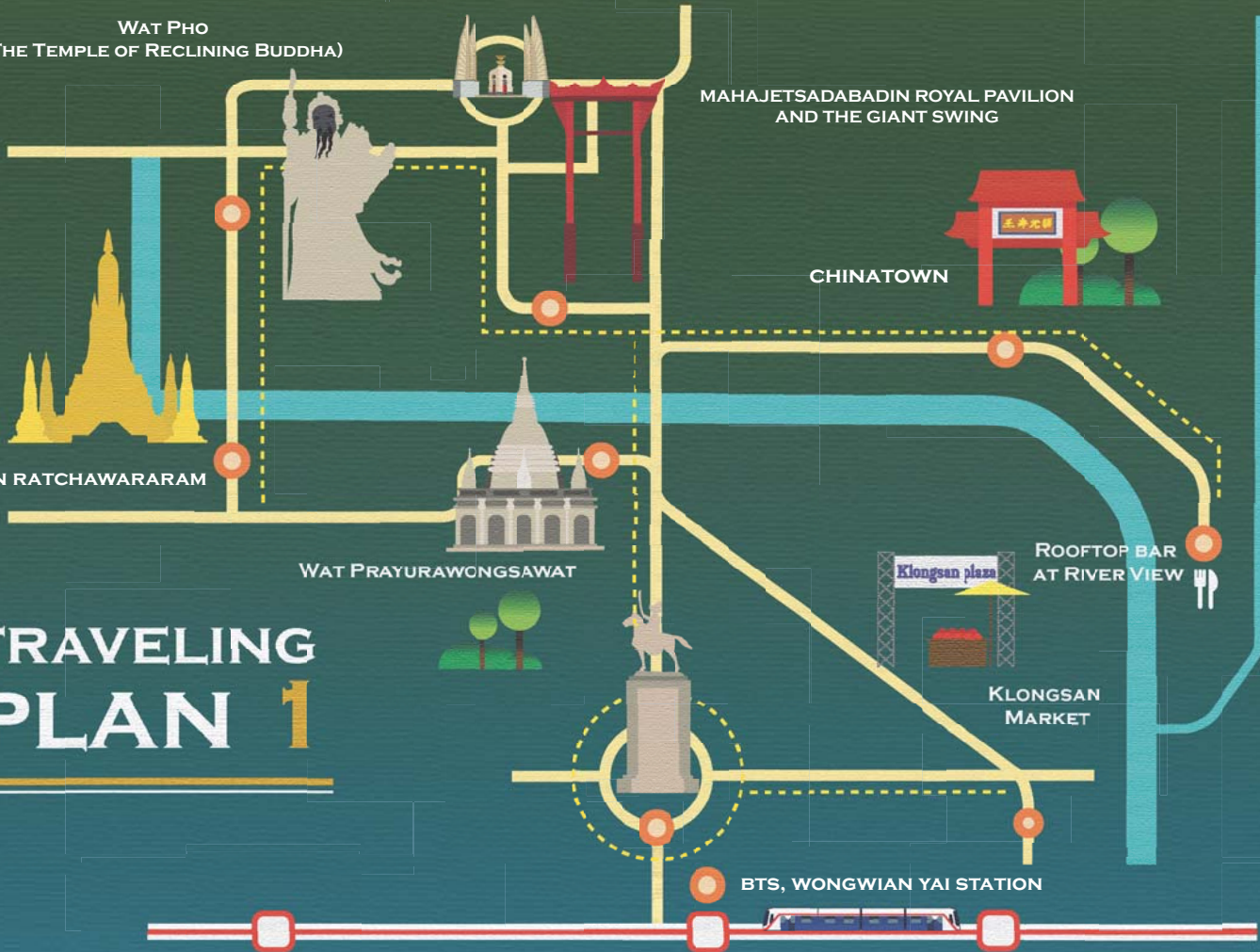
WAT PRAYURAWONGSAWAT

ROOFTOP BAR  
AT RIVER VIEW

KLONGSAN  
MARKET

BTS, WONGWIAN YAI STATION

# TRAVELING PLAN 1





# THE MAGNIFICENT LIGHTS OF OLD TOWN BANGKOK

---

**EXPERIENCE VIBRANT NIGHT LIFE IN THE CITY,  
WITH A COOL TOUCH OF TUK TUK RIDE.**

Start your trip at Khlong San Market, a fresh market full of delicious local desserts. Our recommendation is Bua Loy Kai Kem (rice balls in hot and sweet coconut milk with boiled salted egg), one of the best Thai desserts. Then, take a coffee break with a cool atmosphere at the Jam Factory and wait for the evening to come and continue to Wat Prayurawongsawat Waraviharn (Prayoon Temple), a stunning Thai architecture with international credential from UNESCO. After that, witness the beauty of Wat Arun (Temple of Dawn) when lit up in twilight before crossing the river on a ferry to Tha Tien Pier. Then, take a relaxing stroll along the street and see the exquisite lit-up Wat Pho (Temple of Reclining Buddha) Pagoda at night. After taking your fill of night walk,

hop on a Tuk Tuk and take a breezy tour around Rattanakosin Island. Try to spot iconic locations such as Wat Phra Kaew (Temple of the Emerald Buddha), the Grand Palace, Democracy Monument, Royal Pavillion Mahajetsadabadin, and Bangkok Giant Swing. Then, get off at Yaowarat, a big Chinese community in Thailand and the most vivid town in the night. Enjoy various delicious food and travel to your final destination of the night at Talad Noi area by Tuk Tuk. Go up to a rooftop bar of River View Hostel where you can sip on a drink or taste sensational cuisine while savoring the breath-taking skyline view of Chao Phraya River curves. You will enjoy the lights of old town Bangkok on one side and modern Bangkok on the other.



# TRAVELING PLAN 1

4

WAT ARUN  
(TEMPLE OF DAWN)



🕒 19.00 - 19.20

5

WAT PHO  
(TEMPLE OF RECLINING BUDDHA)



🕒 19.40 - 20.00

3

WAT PRAYURAWONGSAWAT WARAVIHARN  
(PRAYOON TEMPLE)



🕒 18.20 - 18.50

**6** MAHAJETSADABADIN ROYAL PAVILION  
AND BANGKOK GIANT SWING



🕒 20.10 - 20.30

**7**

YAOWARAT  
(CHINATOWN)



🕒 20.45 - 21.15

**8**

RIVER VIEW'S  
ROOFTOP BAR



🕒 21.30



🕒 17.40 - 18.10



🕒 17.30

START AT WONG WIAN YAI BTS  
STATION

**1**

**2** KHLONG SAN MARKET



Klongsan plaza



# TRAVELING PLAN 2

CHARN MUEANG AGRICULTURAL  
LEARNING CENTER



BTS, BANGWA STATION

LUNCH AT  
FARM TO TABLE HIDEOUT

BANG KHAE FRESH MARKET

YODPIMAN  
RIVERWALK

NAI PHON ECO-AGRICULTURAL  
LEARNING CENTER







# A TUK TUK JOURNEY FROM FARM TO TABLE

---

**TRACE BACK TO THE ORIGIN OF HEALTHY THAI FOOD, FROM VEGETABLE AND FRUIT FARMS IN THE OUTSKIRT OF BANGKOK TO YOUR TABLE.**

Have you ever wondered where the food we consume everyday comes from? This trip will take you back to the source and delivery chain of healthy food, in a relaxing soft adventure via Tuk Tuk, Bangkok's trendy transport. Start your trip at Nai Phon Eco-Agricultural Learning Center, the biggest vegetable and fruit farm in Bang Khae District. Get ready to take a boat into guava field, learn how to take care of fruit farm, and taste fresh fruits from the trees. Then, continue to Chan Mueang Agricultural Learning Center (Suburban Vegetable Farm) in Bang Khae, where you can enjoy a hands-on experience of planting vegetable in the farm with local people. From there, trace food delivery chain to Bang Khae Fresh Market, and end your day trip by eating Thai fusion cuisine, cooked with organic ingredients, at a restaurant with a name very appropriate for the trip, Farm to Table Hideout Restaurant.



3



CHAN MUEANG AGRICULTURAL  
LEARNING CENTER  
(SUBURBAN VEGETABLE FARM)  
IN BANG KHAE



🕒 11.00 - 12.00

2



NAI PHON  
ECO-AGRICULTURAL  
LEARNING CENTER



🕒 08.45 - 10.30

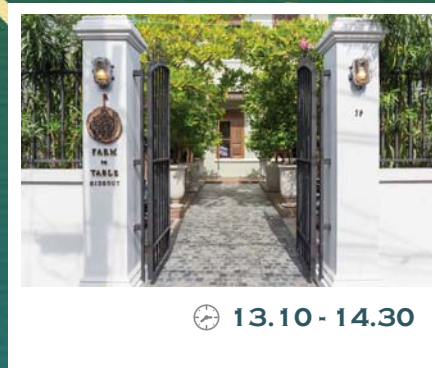
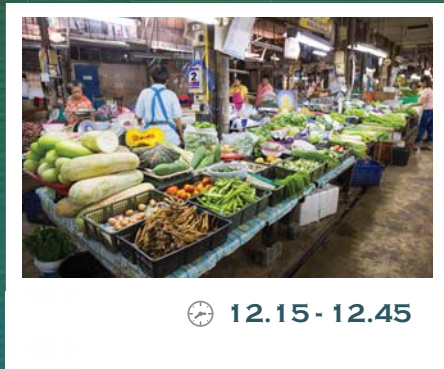
# TRAVELING PLAN 2



5 HAVE ORGANIC LUNCH  
AT FARM TO TABLE HIDEOUT  
RESTAURANT



START AT BANG WA BTS STATION





## WHERE TO GO



### YODPIMAN RIVER WALK

- ✉ 390/17 Chakphet Rd., Wang Burapha Phirom Subdistrict, Phra Nakhon District, Bangkok
- 🕒 Everyday, 10.00 – 01.00 📞 +6626236851

Yodpiman River Walk is a new attraction on the bank of Chao Phraya River in Pak Khlong Talad, which is the largest center of flowers and ornamental plants in Thailand. The place used to be a riverside warehouse to store goods until it was turned into a beautiful attraction, decorated in splendid colonial-styled pale-yellow buildings.



### KHLONG SAN PLAZA & KHLONG SAN MARKET

- ✉ Khlong San Pier, Charoen Nakhon Rd., Klongsan District, Bangkok
- 🕒 Everyday, 09.00 - 21.00 📞 +66860262479

An old market, opened for over 20 years, is located on Khlong San River Bank. This place used to be Pak Khlong San Train Station, an origin of Mae Klong-bound train to the West of Bangkok. As the train was out of service in 1961, this area has turned into Khlong San Market since then. The market is a well-known shopping spot with budget products, including food, clothes, and other goods.



## WAT PHO (THE TEMPLE OF RECLINING BUDDHA)

- ✉ 2 Sanamchai Rd., Phra Borom Maha Ratchawang Subdistrict, Phra Nakhon District, Bangkok
- 🕒 08.00 – 21.00 (the monastery closes at 17.00)
- ☎ +6622260335, +6622259595

Wat Pho or Wat Phra Chetuphon Vimolmangklararm Rajwaramahaviharn, a first class royal monastery, is one of the largest and oldest temples in Bangkok. It existed since Ayutthaya era and was restored by King Rama I. The reclining Buddha was built by King Rama III in 1832, and Wat Pho houses the largest number of Buddhist stupas in Thailand. The temple is renowned for its traditional Thai massage and medicine school, and it is regarded as the first university in Thailand since there is a vast collection of murals and sculptures inside the temple used to teach various fields of arts and science to students.



## NITASRATTANAKOSIN (RATTANAKOSIN EXHIBITION HALL)

- ✉ 100 Ratchadamnoen Klang Rd., Boworniwet Subdistrict, Phra Nakhon District, Bangkok
- 🕒 Tuesday - Sunday, 10.00 – 19.00
- ☎ +6626210044

A learning center with one of the most complete databases of history, arts and culture of Rattanakosin Period in Thailand, Nitasrattanakosin is a brand new tourist attraction on Ratchadamnoen road. You can enjoy the exhibition and get lost in the dazzling arts and science heritage cumulating on this land and in the amazing story of the city modernization during the Rattanakosin Era.





## WAT SAKET RATCHAWARAMA-HAVIHARN (SAKET TEMPLE) AND THE GOLDEN MOUNTAIN

- ✉ 344 Chakkraphat Diphong Rd., Baan Bat Subdistrict, Pom PrapSattru Phai District, Bangkok
- 🕒 Everyday, 08.00 - 17.00

Wat Sakae is an ancient temple built in Ayutthaya Period at Khlong Mahanak riverside. After King Rama I reconstructed and built a canal around the temple, he renamed it 'Wat Saket'. Tourists can climb up, pay respect to Lord Buddha Holy Relics by adhering a small thin gold leaf, and walk around the Golden Mountain to admire a panoramic 360-degree view of Old Town Bangkok area below.



## MAHAJETSADABADIN ROYAL PAVILION

- ✉ Ratchadamnoen Klang Rd., Boworniwet Subdistrict, Phra Nakhon District, Bangkok
- 🕒 Everyday, 24/7

Built in 1989, Mahajetsadabadin Royal Pavilion is the house of Royal Monument of King Rama III . This place is used to welcome honorable guests to the city. Here, visitors can see several landmarks in Bangkok, such as, Loha Prasat (Metal Castle), Ratchanatdaram Temple, Pom Mahakan (Mahakan Fort), and Wat Saket and the Golden Mountain.



## WAT ARUN RATCHAWARARAM OR WAT ARUN (TEMPLE OF DAWN)

- ✉ 158 Wang Doem Rd., Wat Arun Subdistrict, Bangkok Yai District, Bangkok
- 🕒 Everyday, 05.30 – 19.30 📞 +6628912185

Established in Ayutthaya Period, Wat Arun was formerly known as 'Wat Jang'. After the great reconstruction, King Rama II renamed it 'Wat Arunrathacharam' as the royal monastery. During the reign of King Rama III, the great pagoda and small pagodas were built and finished in King Rama IV period, who gave it the present name, 'Wat Arun Ratchawararam'. The great pagoda is a stunning and historically important architecture of Thailand.



## WAT PRAYURAWONGSAWAT WORAVIHARN (PRAYURAWONGSAWAT TEMPLE OR PRAYOON TEMPLE)

- ✉ Prachatipok Rd., Wat Kallaya Subdistrict, Thonburi District, Bangkok
- 🕒 Everyday, 05.00 – 19.00
- 📞 +6624565592

Built in 1828, Somdet Chao Phraya Borom Maha Prayurawong (Dit Bunnag) dedicated his private coffee garden for constructing this temple, and offered it as a royal monastery during the reign of King Rama III.





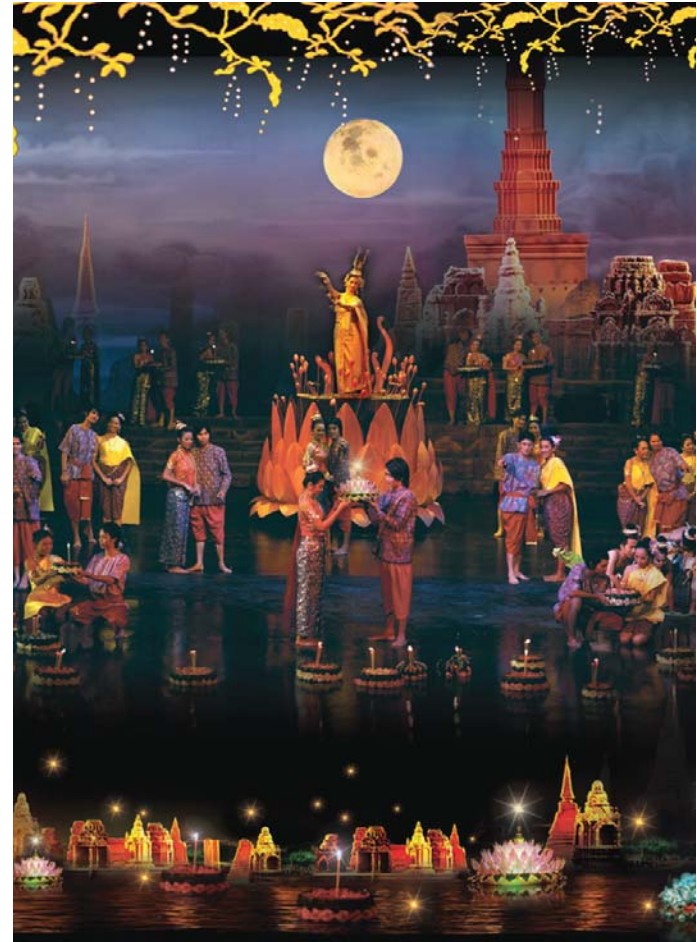
## THINGS TO DO

### SIAM NIRAMIT SHOW



- ✉ 9, Tiam Ruammit Rd., Huay Kwang District, Bangkok
- 🕒 Everyday, 17.00 - 22.00
- ☎ +6626499222
- 📍 [www.siamniramit.com](http://www.siamniramit.com)

A fascinating, tremendous and world-famous adapted Thai dance performance, Siam Niramit show is divided into 3 acts; they are Act 1 – Journey back to History, Act 2 – Journey beyond Imagination, and Act 3 – Journey through Joyous Festivals. The show takes place in Ratchada Theatre, the world's highest stage, and the performances are heightened by beautiful backdrop completed with sophisticated lighting and sound system. Siam Niramit received the Hall of Fame Award and Award of Excellence on Tourist Attractions at the Thailand Tourism Award 2015.





## SOR VORAPIN MUAY THAI TRAINING GYM (KHAO SAN BRANCH)

- ✉ 13 Kasa balley, Jakkapong Rd., Phra Nakhon District, Bangkok
- 🕒 Everyday, group training 07.30 - 09.30 and 15.00 - 17.00
- ☎ +66816495704, +6622823551
- 🌐 www.thaiboxings.com

Apart from jogging and working out in fitness center, martial art like 'Thai boxing' is a trending exercise, popular in young people these days. Because not only just firm body, you also learn how to protect yourself against unexpected attack. A group class costs 500 Baht for 1 - 2 hours training, and 1000 Baht/hour for private class.



## CHAN MUEANG AGRICULTURAL LEARNING CENTER

- ✉ 16 Soi Kanchanapisek 007, Bang Khae Nuea Subdistrict,  
Bang Khae District, Bangkok
- 🕒 Everyday, 09.00 - 16.00 ☎ +6624041482, +66942368414

At Chan Mueang Agricultural Learning Center, you can learn how to plant, water, loosen the soil and reap organic vegetables like watercress, morning glory plants, coriander, etc. Then, get hands-on from planting, loosening soil with tractor, watering and driving watering boat. Moreover, you can also buy fresh fruits from the farm back as souvenirs as well. This activity takes about 1 - 1.5 hours, and costs 250 Baht per person.





## TRADITIONAL THAI MASSAGE AND SPA AT PAI SPA

- ✉ 156 Rambuttri Rd., Talad Yod Subdistrict, Phra Nakhon District, Bangkok
- 🕒 Everyday, 10.00 - 23.00
- ☎ +6626295154
- 📍 [www.pai-spa.com](http://www.pai-spa.com)

Pai Spa is set in 'Baan Ram Butri', the last Thai Kahabhadee House (a type of traditional Thai house that was popular among wealthy people in the past) over 140 year-old, on Rambuttri Road in Bang Lamphu District, with the atmosphere of classic and rare traditional Thai house that helps intensify the massage. Pai Spa accentuates traditional Thai massage and uses only generally approved Thai herbal product. If you are also interested in Pai Spa's product, you can also buy them for yourself or as souvenir here.



## A BOAT TOUR AT NAI PHON ECO-AGRICULTURAL LEARNING CENTER

- ✉ 839/52 Soi Petchkasem 63, Lak Song Subdistrict, Bang Khae District, Bangkok
- 🕒 Everyday, 09.00 - 16.00
- ☎ +66615465298

The largest vegetable and fruit farm in Bang Kae District, Nai Phon Eco-Agricultural Learning Center sets on 700 Rai (277 acre) area where more than 750 farmer families live and work together in harmony. Farming runs deep in their families since the generation of their grandparents, but it was in 1997 when deliberate cooperation as a group of Bang Kae farmers was established. Nowadays, the group has adopted Integrated Agricultural System, resulting in various products from the farm, such as, vegetables, fruits and processed products from vegetables and fruits.





## WHAT TO EAT

### BUA LOY KAI KEM AT KHLONG SAN PIER

- ✉ 59 Khlong San Pier, Charoen Nakhon Rd.,  
Khlong San District, Bangkok
- 🕒 Tuesday - Sunday, 13.00 - 19.00
- ☎ +66816975971, +66890167959

Visiting Klong San, travelers should not miss to taste legendary dessert “Bua Loy Kai Kem” (rice balls in hot and sweet coconut milk with boiled salted egg). Both salted egg and sweet egg are to die-for.



## RIVER VIBE RESTAURANT & BAR

- ✉ 768 Soi Phanurangsi, Songvad Rd., Talad Noi Subdistrict, Sampantawongse District, Bangkok
- 🕒 Everyday, 07.30 - 23.00
- ☎ +6622342078
- 📍 [www.riverviewbkk.com/RiverVibe](http://www.riverviewbkk.com/RiverVibe)

This pub and restaurant, located on Chao Phraya riverside, offers comfy atmosphere. The river view from this restaurant is at the perfect spot to see Chao Phraya's most beautiful bend. It is perfect for dinner while enjoying sunset view. The internal decoration is simple but elegant with charming ancient wooden furniture.



## ROMPHO NORTH EASTERN RESTAURANT

- ✉ 33 Charoen Nakhon Rd., Khlong San District, Bangkok
- 🕒 Monday - Saturday, 10.00 - 20.00
- ☎ +66816591617, +66895457641

Situated opposite to the Jam Factory, the Northeastern Thai-style air-conditioned restaurant is decorated with wooden Thai crafts. Its original recipe is Koa Mun Som Tam. Grilled Pork Shoulder, Deep Fried Chicken, Bambooshoot Salad and Pork Rib Spicy Soup are also recommended.



## ERR URBAN RUSTIC THAI

- ✉ 94/35 Maharat Rd., Phra Borom Maha Ratchawang Subdistrict,  
Phra Nakhon District, Bangkok
- 🕒 Everyday, 11.00 - 15.00 and 18.00 - 22.00
- ☎ +6622246251, +6626222291
- 🌐 [www.errbkk.com](http://www.errbkk.com)

Hidden from chaos of Maharat Road, Err Urban Rustic Thai is located at Soi Pan Suk. The restaurant offers traditional and mixed Thai food throughout their over 40 menus that are harmonized with old-fashion Thai, mixed with perfect combination of modern and retro decoration.



## FARM TO TABLE HIDEOUT

- ✉ 79 Maha Rat Rd., Phra Borom Maha Ratchawang Subdistrict,  
Phra Nakhon District, Bangkok
- 🕒 Thursday - Tuesday, 10.00 - 21.00
- ☎ +6620048771

This charming tiny organic café in Pak Khlong Talad area offers various dessert menus with healthy feminine style. Their recommended dish are organic fresh veggie salad, fresh squeezed orange juice and homemade organic ice-cream, especially sweet potato flavor.





## LI-BRA-RY AT CANDIDE

- ✉ 41/1 Charoen Nakhon Rd., Khlong San District, Bangkok
- 🕒 Everyday, 09.00 - 20.00
- ☎ +6628610968

A famous coffee shop, Li-bra-ry at Candide, is located on the riverside at the Jam Factory project near Khlong San Market. The coffee shop contains sylvan atmosphere. There are tables under tree shade outside of the shop. Other tables are located inside, together with the partition that shows Candide bookstore area. The customers can buy a book and enjoy it with delicious coffee. The coffee shop offers various menus such as Espresso, Latte, Mocha and Cocoa. There are also delicious cakes and waffles for customers to enjoy.



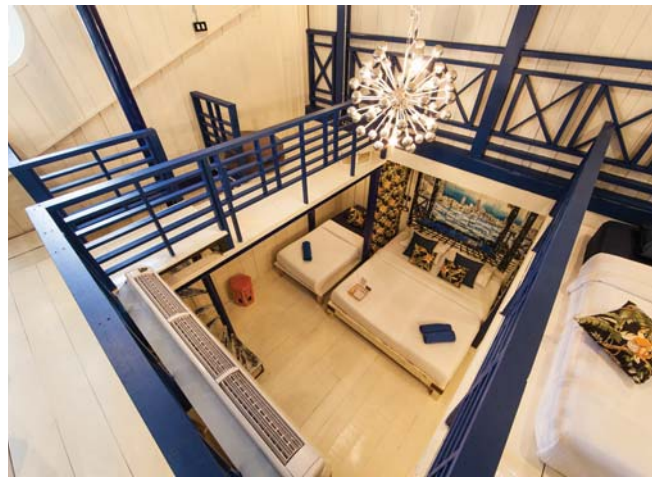


## WHERE TO STAY

### LOYLALONG

- ✉ 1620/2 Songwat Rd. (inside Patumkongka Temple),  
Sampanthawongse District, Bangkok
- ☎ +6626391390, +66891331131, +66894541414
- 🏠 2400 - 4400 Baht
- 🌐 [www.loylalong.com](http://www.loylalong.com)

A boutique-retro style hotel is a two-storey old house on Chao Phraya riverside. Decorated with ancient classic style furniture that makes you feel like traveling back in time to your childhood, the hotel is consisted of 7 rooms that show stunning view of Chao Phraya River as well as beautiful color of the night. It is suitable for travelers who seek relaxation in a chilling atmosphere.





## BAAN DINSO@RATCHADAMNOEN

✉ 78/3 Ratchadamnoen Klang Rd., Boworniwet Subdistrict,  
Phra Nakhon District, Bangkok

☎ +6626212808

💰 650 - 2500 Baht

🌐 [www.baandinso.com](http://www.baandinso.com)

An over hundred years old two-storey teak wood house is resurrected to be a tiny boutique hotel on Ratchadamnoen Road, a historic road of Rattanakosin Era. The hotel offers 9 rooms with simplicity in decoration, giving warm feeling for guests to feel like home. It fits perfectly for those who seek privacy.



## SALA ARUN

✉ 47-49 Soi Ta-tein, Phra Borom Maha Ratchawang Subdistrict,  
Phra Nakhon District, Bangkok

☎ +6626222932-3

💰 3500 - 7800 Baht 🌐 [www.salaarun.com](http://www.salaarun.com)

This hotel is located on Chao Phraya Riverside, opposite to Wat Arun. Their roof top bar offers one of the most beautiful views of the Choa Phraya River. The hotel is decorated beautifully in traditional Thai style and each room is named according to famous provinces in Thailand such as Sukhothai and Bangkok.



## PHRANAKORN NORLEN

✉ 46 Thewet Soi 1, Krungkasem Rd., Bangkhunprom Subdistrict,  
Phra Nakhon District, Bangkok

☎ +6626288188-9

🏠 2200 - 4200 Baht

🌐 [www.phranakorn-nornlen.com](http://www.phranakorn-nornlen.com)

This urban accommodation in Bangkok, surrounded with sylvan garden, gives you calmness and privacy. There are also a lot of chic spots for the guests to enjoy taking photos with various pieces of art, such as paintings on the walls, balcony and windows as well as antique wooden furniture in every corner. The guests can also enjoy various activities the hotel has to offer such as soap making, painting and cooking class, etc.

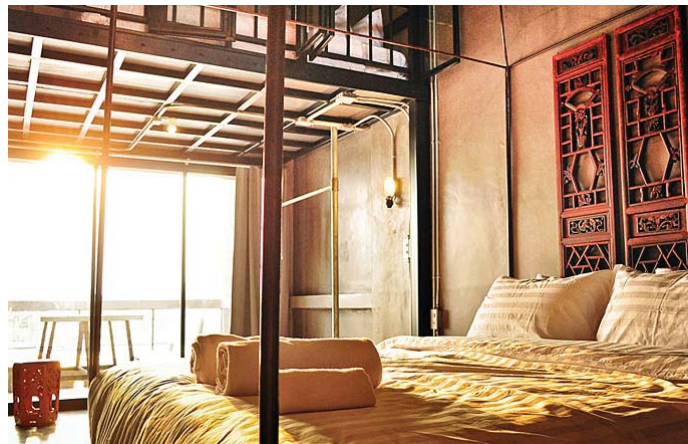




## ONCE AGAIN HOSTEL

- ✉ 22 Soi Samran Rat, Phra Nakhon, Bangkok
- ☎ +66926205445
- 🏠 425 - 650 Baht ↗ [www.onceagainhostel.com](http://www.onceagainhostel.com)

Once Again Hostels builds on a unique community with surrounded communities to preserve their way of life. The hostel offers guests with shared bedrooms but charges per person. It fits for a group of backpackers. Located at the heart of Bangkok's old town, it is 10 minutes walking from the Golden Mountain and 15 minutes from Khao San Road. Lovely coffee corner is on the ground floor.



## INN A DAY BANGKOK

- ✉ 57-61 Maharat Rd., Phra Nakhon District, Bangkok
- ☎ +6622210577, +6622210470
- 🏠 3500 - 9000 Baht ↗ [www.innaday.com](http://www.innaday.com)

Inn A Day builds on two distinctive concepts. First is the timing, which divide the hotel into 3 zones: dawn, day and dusk. Second, its rooms are decorated with Tatién-Community to reflect the hotel's surrounding community. Built in 2013, the city is merely 6.5 km away and the airport can be reached within 35 minutes. With its convenient location, The hotel offers easy access to the city's must-see destinations such as the Grand Palace, Wat Pho, and Wat Arun.





## WHAT TO BUY

### **NAM AOB (THAI TRADITIONAL PERFUME) BY NANG LOY**

- ✉ 217-223, Mahachai Rd., Samran Rat Subdistrict,  
Phra Nakhon District, Bangkok
- 🕒 08.00 - 17.00
- ☎ +6622215500, +6622210465

The legacy of refreshingly scented water, or Nam Aob, was passed down from the secret formula in the palace 85 years ago. The signature of Nam Aob is a familiar smell and untarnished water, both achieved by secret mixture and manufacture process.





## WANPHAKA SOAP

- ✉ 195/1, Lake Ratchada Office Complex Building,  
Ratchadapisek Rd., Khlong Toei District, Bangkok
- 🕒 10.00 - 21.00
- ☎ +6626618661-2

Made from natural ingredients, Wanphaka soaps are gentle to skin and gives wonderful smell of local Thai flowers known in Thai traditional literature. They are made into round, palm-sized shape, which is easily held in your hand. Another lovely point of Wanphaka soaps is their lotus shape, which is a well-known Thai flower.

## TRADITIONAL THAI DRAMA MASK (KHON) BY KHLONG TON SAI COMMUNITY

- ✉ 23, Soi Charoen Nakhon 9, Khlong Ton Sai Subdistrict,  
Khlong San District, Bangkok
- 🕒 10.00 - 17.00    ☎ +6624383127, +6696698831, +6628899961

Khon is the height of Thai fine arts. It is similar to a mask that actor puts over his head, covering his face. Nowadays, Khon musical drama is quite rare to find, but Baan Hua Khon Club of Khlong Ton Sai Community still passes on this fine arts of creating a delicate and detailed masks with all traditional creating process to the next generation.



## BAAN KRUA NUA SILK COMMUNITY

### • UNCLE AOOD'S HOUSE THAI SILK

- ✉ 847/1 Soi Kasemsan III, Phayathai Rd.,  
Ratchatewi District, Bangkok
- 🕒 08.00 - 20.00
- ☎ +6622159864

### • PHAMAI BAAN KRUA

- ✉ 837 Soi Payanak, Petchaburi Rd.,  
Ratchatewi District, Bangkok
- 🕒 08.00 - 17.00
- ☎ +66812439089, +6622157458

The elaborate and meticulous manufacturing process of Thai silk at Baan Krua Nua Silk community is legendary and was impressed Jim Thompson who had been name 'the King of Thai Silk'. Start from dyeing silk with natural color such as wooden bark and annatto fruit. Then, silk is woven by hand, with no machines involved, creating unique, embellished, beautiful details. Nowadays, Uncle Aood's House of Thai Silk and Phamai Baan Krua are only few Thai silk makers left at the community.



## BRONZE BOWL BY BAAN BU COMMUNITY

- ✉ 133, Baan Bu Alley, Charansanitwong 32 Rd., Siriraj Subdistrict, Bangkok Noi District, Bangkok
- 🕒 10.00 - 17.00
- ☎ +6624241689, +66816157840

Bronze bowl, or Khan Long Hin, is a product of Thai local wisdom first created in Ayutthaya Period. Since then, Baan Bu Community has been passing on skills and secret to making this bowl in families. Creating process of Khan Long Hin requires not only knowledge of creating process, but also skills that accumulate with time, as there are 7 handmade processes. The result is Baan Bu's Khan Long Hin that is durable, remains shiny, and does not peel off in time. The bowls are used as containers for refreshing cold drink. Now, you can find this handicraft only in this community.



# GETTING THERE

---



## **AIRPORT RAIL LINK TRAINS**

---

A quick, convenient and accessible way to travel from places in the city to Suvarnabhumi airport, available daily from 06.00 to 24.00.



## **BTS SKY TRAINS**

---

Available in most areas in the heart of Bangkok, covering most business areas, neighborhoods, and shopping centers, BTS Sky Trains open daily from 06.00 to 24.00.



## **CHAO PHRAYA EXPRESS BOAT**

---

There are a total of 34 piers along Chao Phraya River with 4 types of express boat services; they are Local Line (no flag), Orange Flag Express Boat, Yellow Flag Express Boat, and Blue Flag Express Boat.



## **MRT TRAINS**

---

Underground train service with total 18 stations currently in service starts from Hua Lamphong to Bang Sue Stations. It opens from 06.00 to 24.00.





## MOTORCYCLE TAXIS

---

Motorcycle taxis pick up and take you to places in the city, with pick-up stop spreading every other corner. Fares depend on distance and agreement of both sides.



## METERED TAXIS

---

Metered taxis pick up and take you around the city, with standard charging rate by distance and duration. The starting price is at 35 Baht, with extra 20 Baht per trip when requested over radio communication, extra 50 Baht per trip when hailed from Bangkok airports, and passengers must pay for expressway fares by themselves.



## TUK TUK

---

Tuk Tuk will take you to places, with pick-up stations around the city and fares depended on distance and agreement on both sides.





# KRABI PROVINCE

## RUE HUA TONG

---

**TOUCHING GLORIOUS HISTORY.  
ADMIRE THE PLENTIFUL NATURE.**

Krabi is the well-known province for the extensive history since the ancient days as the marine Silk Road that connects west and east peninsulas together without making a detour around Malay Peninsula. Hence, Krabi became gateway for merchants and travelers from India, Egypt, Greece, Arabian Peninsula, and China to meet, trade, and exchange goods. The archeologists have found a lot of appliances and ancient beads. Nowadays, Krabi is Thailand's important tourist spot with various natural places such as sea, mountains, waterfalls, and hot springs, altogether with interesting historical traces such as ancient cave paintings, ancient beads and cave men's way of life, these make Krabi a destination for those who seek to enjoy pure nature and history.





## FYI

Krabi's Long Tail Boat is generally called "Rue-Hua-Tong" because it gets the name from Kra Tong fish that is found plenty in Krabi Province. Kra Tong fish's mouth is tapering and long as well as the prow of the Rue Hua Tong.



Nowadays, Rue Hua Tong are less used due to the increasing numbers of speed boats which are faster and more convenient. Thanks to the Rue Hua Tong Conservation Club and the Rue Hua Tong Museum on Ta Lang island, this fishermen's way of life is preserved and inherited.

---

# RUE HUA TONG (LONG TAIL BOAT)

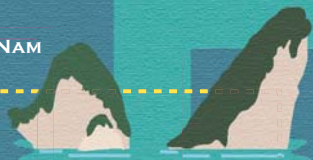
---

**EXPLORE THE ANDAMAN SEA, LEARN LOCAL FISHERMEN'S LIFE WITH RUE HUA TONG, AND ENJOY TOUCHING WAVES AND COOL BREEZE.**

Rue Hua Tong is Krabi's local boat. Originally assembled for fishery, Rue Hua Tong is also widely used in nearby provinces. The identity of Rue Hua Tong is the high curved prow which is the local wisdom to break into the strong wind of Andaman sea. Without this shape of prow, the water could gush into the boat. Not only breaking into the wind and waves but the prow is also used as the compass for navigation as the fishermen normally use islands to guide the direction so that turning prow to an island is an effective guidance.



KHAO KHANAB NAM  
MOUNTAINS



CHAO FAH PIER



KAEW KORAWARAM TEMPLE

CRUISE TO SEE  
MANGROVE TUNNEL



SANGYOD RICE CENTER



FRESH SEAFOOD FROM  
THE SEA AT BAAN KOH KLANG



CRUISE TO SEE THE ESTUARY OF  
KRABI RIVER



LONG TAIL BOAT CENTER



PATEH FABRIC CENTER



TRAVELING  
PLAN 1



# A SEARCH FOR KRABI HERITAGE & TREASURES

---

## A TRAVEL ROUTE BY RUE HUA TONG TO SEARCH FOR KRABI'S NATURAL TREASURES AND HISTORICAL CULTURE.

A flavorful travel route that will take you to see rich culture, nature, history and local communities starts at Kaew Korawararam Temple, the beacon temple and the heart of Krabi that is located at the center of the town. Then cruising along the river to witness the beauty of Krabi's landmark and World War II Japanese military base camp, Khao Khanab Nam Mountains, where you will also learn about ancient cavemen, followed by floating along Krabi river so you can admire the stunning view of Krabi's "unseen" mangrove tunnel. Your Rue Hua Tong will go ashore at Baan Koh Klang

village so you can enjoy local flavor of fresh seafood right off the net.

After the meal, you will be taken on a local vehicle to see Baan Koh Klang people's way of life, getting to know Thailand's most expensive rice "Sangyod Rice" and experiencing farmer's life by doing rice husking by hand. Visiting Rue Hua Tong Model Center and Pateh Fabric Center and trying out Pateh painting and bringing it home as a souvenir. Then, cruising back to Krabi and letting yourself relished by the pleasant views of Krabi's magnificent islands before docking at Chao Fah Pier.



# TRAVELING PLAN 1



🕒 08.30 - 08.50

## 1 KAEW KORAWARAM TEMPLE



🕒 09.00 - 09.10

## 2 CHAO FAH PIER



🕒 09.20 - 09.40

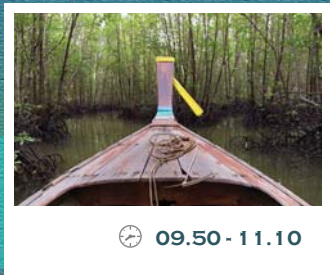
## 3 KHAO KHANAB NAM MOUNTAINS



🕒 15.00 - 15.30

## 9 THE ESTUARY OF KRABI RIVER





**4** CRUISE TO SEE MANGROVE TUNNEL

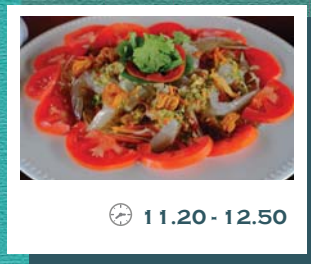


🕒 09.50 - 11.10

**6** SANGYOD RICE CENTER

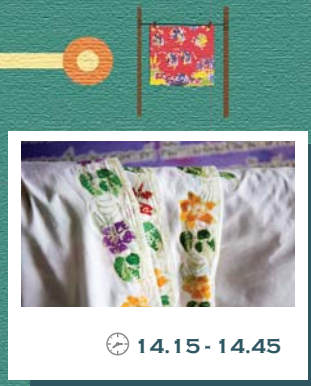


🕒 13.00 - 13.30



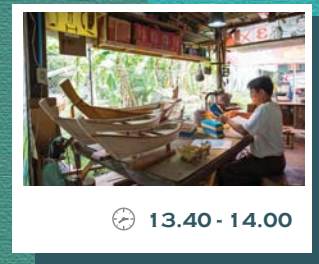
🕒 11.20 - 12.50

**5** FRESH SEAFOOD FROM THE SEA AT BAAN KOH KLANG



🕒 14.15 - 14.45

**8** PATEH FABRIC CENTER



🕒 13.40 - 14.00

LONG TAIL BOAT CENTER



**7**





KW 01  
5652  
04397  
NAT  
NAT



## **FYI**

Private boat fare: Rue  
Hua Tong – 2000 Baht  
maximum 8 persons  
(Prices are variable based  
on time and routes)

Baan Koh Klang local  
tricycle fare: 300 Baht,  
maximum 4 persons  
(Prices are variable based  
on time and routes.)

---



# TRAVELING PLAN 2



BAAN LAEM SAK,  
3-CULTURE COMMUNITY



RIDING ON A BICYCLE  
TO MAKHAM PIER



AO LUK COMMUNITY BASED  
TOURISM NETWORK CENTER

BAAN AO NAM (LOCAL LUNCH)



AO NAO (ANCIENT PAINTINGS  
AND FISH FARM WITH  
FLOATING BASKET IN THE SEA)



PEE HUA TOE CAVE





# ONCE IN A LIFETIME TRANQUIL EXPERIENCE IN AO LUK

---

**TRAVELING BACK IN TIME OF HISTORY TO ENJOY SLOW LIFE SPENDING FROM MARUI CANAL TO ANDAMAN'S GATEWAY.**

This route on Marui Canal brings travelers back in time to study story of pre-historic cavemen and sightsee beautiful natural resources and Ao Luk's cultural diversity. The route starts from Makham Pier to Pee Hua Toe Cave, visiting the tomb of pre-historic men and ancient paintings on the wall's cave. Followed by getting on the kayaks to visit the Sea Arch, one of Ao Luk's fantastic places, then cruising on Rue Hua Tong to Baan Ao Nam to experience local-style lunch and participate in after meal activity with villagers by planting Krabi Yellow Lady's Slipper orchid. Then, cruising further to Ao Nao to see ancient paintings at Fai Mai Peninsula, stopping by the famous Nail Island to take photos, and visiting mid-sea fish baskets and sea grapes farm. The last destination is Baan Laem Sak, a community that combines 3 cultures which are Chinese, Buddhist and Muslim. The travelers will also enjoy the 360° panoramic view on top of Baan Laem Sak's pagoda.



# TRAVELING PLAN 2



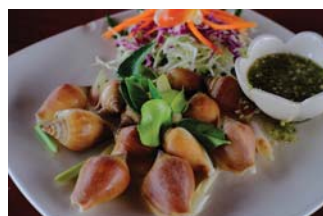
🕒 13.20 - 14.30

5 AO NAO (ANCIENT PAINTINGS  
AND FISH FARM  
WITH FLOATING BASKET IN THE SEA)



🕒 15.00 - 16.00

6 BAAN LAEM SAK,  
3 - CULTURE COMMUNITY



🕒 11.30 - 13.00

4 BAAN AO NAM  
(LOCAL LUNCH)





🕒 09.10 - 09.30

**2** RIDING ON A BICYCLE  
TO MAKHAM PIER



🕒 10.00 - 10.30

**3** PEE HUA TOE CAVE



🕒 08.30 - 09.00






**1** AO LUK COMMUNITY BASED  
TOURISM NETWORK CENTER





## FYI

Private boat fare: Rue Hua Tong throughout the route (small boat for Marui Canal and big boat for Andaman estuary) 4700 Baht, maximum 10 persons

-  **Orchids planting activity:**  
100 Baht/person
-  **Local food at Ao Nam:**  
200 Baht/person (Approximately)
-  **Bicycle rental at Baan Tham Sua:**  
100 Baht/person
-  **Pee Hua Toe Cave entrance:**  
60 Baht/person
-  **Kayak rental:** 300 Baht/person

(Prices are variable based on time and routes)

---





## **FYI**

The name “Ao Luk” is called by the characteristic of surrounding area which is coving deep in the land. Even though there is no beautiful marine scenic view like other places in Krabi, Ao Luk’s miracle geography is also as fantastic as the one you witness in the famous Vietnam’s Halong Bay.

Ao Luk is also considered as one of Thailand’s interesting historic sites due to its proof of ancient men’s existence including pre-historic paintings that are countlessly scattered among caves and cliffs in the middle of the sea.



## WHERE TO GO



### KAEW KORAWARAM TEMPLE

- ✉ 82 Itsaranusorn Rd., Pak Nam Subdistrict, Mueang District, Krabi
- 🕒 Everyday, 07.00 – 18.00
- ☎ +6675611252

This Krabi's beacon temple is originally built at the same time as Krabi city. Currently, it is the heart of Krabi's Buddhism and center of Krabi's monk cabinet of Pali studies. The temple's front is connected to Maharat street. It is able to see Krabi river from the temple's front square.



### BAAN KOH KLANG COMMUNITY

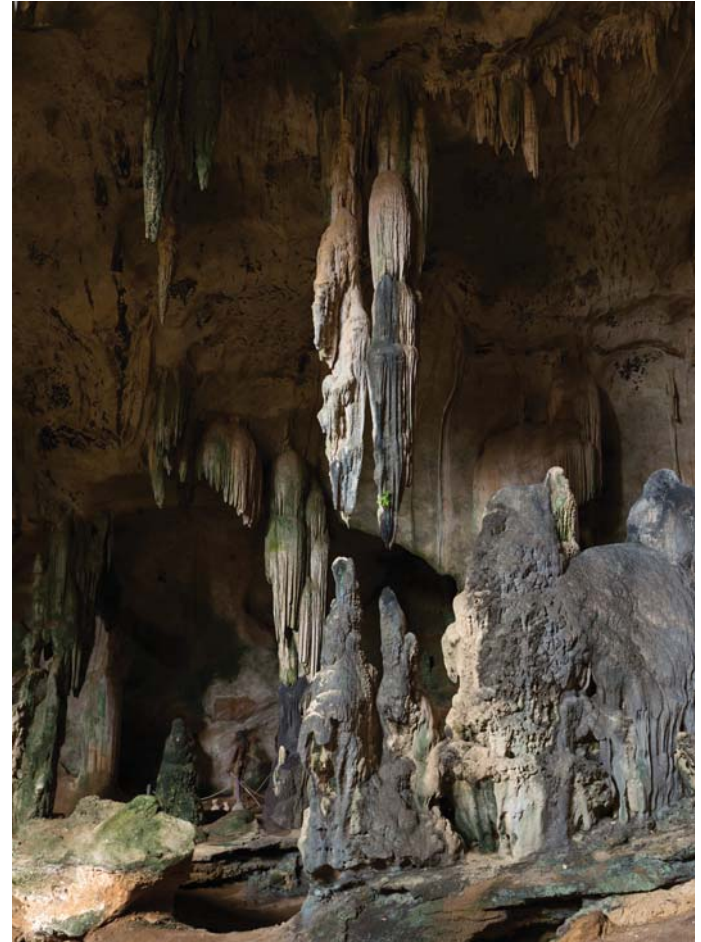
- ✉ Pak Nam Subdistrict, Mueang District, Krabi
- 🕒 Everyday, 08.00 – 18.00

This Muslim community is located at Krabi River's estuary. Most of the villagers are fishermen and farmers living their lives in a very simple way. The nature is plentiful by surrounded mangrove forest that makes the community charmed in terms of fertile environment and ways of life.

## PEE HUA TOE CAVE

- ✉ Ao Luk Tai Subdistrict, Ao Luk District, Krabi  
(Inside Than Bok Khorani National Park)
- 🕒 Everyday, 08.30 – 16.30
- ☎ +6675681096

Pee Hua Toe Cave is located in a limestone mountain surrounded by mangrove forest. The cave itself is 10 meters above the sea level. There was a discovery of ancient caveman's skull that has larger size than average. That is why the cave is called "Pee Hua Toe" (Giant Head Ghost) Cave. Moreover, there are more than 100 ancient paintings that tell the stories of prehistoric men on the cave's wall.



## THAN BOK KHORANI NATIONAL PARK

- ✉ 2/2 Moo 2, Ao Luk Tai Subdistrict, Ao Luk District, Krabi
- 🕒 Everyday, 08.30 - 16.30
- ☎ +6675681096

It is located at Ao Luk district that covers more than 65000 rais. There is educational nature trail inside the national park for the visitors to enjoy. At the end of the trail, visitors will find a very beautiful Than Bok Khorani pool.



## THA POM KLONG SONG NAM

- ✉ Moo 2, Baan Nong Jig, Khao Kram Subdistrict, Mueang District, Krabi
- 🕒 Everyday, 08.30 – 16.30
- ☎ +6675603408

Tha Pom Klong Song Nam is another Thailand's “unseen” travel destination. The ecosystem in Tha Pom Canal has special characteristic. The mix of high tide from the sea with fresh water in the canal creates muddy blue brackish water but when the tide is low, sea suspensions draw all sediments in Tha Pom Canal back to the sea so the water is clear enough to see fish and water plants underneath.





## SEPARATED SEA (THALE WAEK)

- ✉ Phi Phi Islands National Park, Aonang Subdistrict, Mueang District, Krabi
- 🕒 Everyday, 08.00 - 16.00
- ☎ +6675661145

Thale Waek is one of the worldwide famous tourist spots. The sand dune is created by enormous sands brought by the tide. During low tide, the long white sand path appears and connects 3 islands together which are Koh Kai, Koh Moh and Koh Tub. However, during high tide, the sand path sinks beneath the water. This phenomenon is called “Separated Sea”. Travelers can visit Separated Sea by Rue Hua Tong from Nopparat Thara Pier.





## KRABI WALKING STREET

- ✉ Maharaj Soi 8, Pak Nam Subdistrict, Mueang District, Krabi
- 🕒 Friday - Sunday, 17.00 – 23.00

Krabi's Walking Street in front of Vouge Shopping Plaza is the weekend market that has all the fun at night. There are plenty of food, desserts, drinks, souvenirs and stages where Krabi people would come out and show their talents. It is considered "a must" place to visit if you come to Krabi during the weekend.



## TIGER CAVE TEMPLE

- ✉ Krabi Noi Subdistrict, Mueang District, Krabi
- 🕒 Everyday, 06.00 – 18.00
- ☎ +66840684664

Tiger Cave Temple is another Krabi's highlight because of the beauty of the pagoda on Khao Kaew mountain's top that contains relic of Lord Buddha. The pagoda is 600 meters above sea level and has a stairway with 1237 steps. When reaching at the top of the pagoda, there is 360° panoramic view of Krabi city.



## KHAO KHANAB NAM MOUNTAINS

- ✉ Pak Nam Subdistrict, Mueang District, Krabi
- 🕒 Everyday, 08.30 – 16.30

2 mountains standing tall alongside Krabi River are the symbol of Krabi. Not only is the beauty from external look but there are also plenty of magnificent stalactites, stalagmites and historic stories waiting for you to observe from the inside.





## THINGS TO DO

### PLANTING LOCAL ORCHIDS AT BAAN AO NAM

- ✉ 34/3 Moo 2 Baan Ao Nam, Laem Sak Subdistrict,  
Ao Luk District, Krabi
- 🕒 Everyday, 09.00 – 17.00
- ☎ +66612454882

Baan Ao Nam is a small community in Ao Luk District near Baan Laem Sak. It is a Muslim community with fishery as the main occupation. An interesting tourist spot in this community is the Yellow Cypripediodeae Cultivation Center. This orchid species, also known as Yellow Lady's Slipper orchid, is the iconic orchid of Krabi Province, so the thing you cannot miss to do here is to take this orchid and plant it in the forest in Hua Chang Hill.







## **PAINTING A PATEH FABRIC AT KOH KLANG COMMUNITY**

- ✉ Pateh Center, Koh Klang Community, Klong Prasong Subdistrict,  
Mueang District, Krabi
- 🕒 Everyday, 09.00 – 17.00
- ☎ +66898750697

If you have a chance to visit Koh Klang Community, one of the activities you shouldn't miss is Pateh fabric painting at Koh Klang's Pateh Center. This local Pateh fabric is different from others as it gains a lot of influence from Malaysian art and is blended with Thai patterns. This makes Koh Klang's Pateh art very beautiful and unique unlike the others.



## **SNORKELING AT PHI PHI ISLANDS**

- ✉ Nopparat Thara Beach-Phi Phi Islands National Park,  
Ao Nang Subdistrict, Mueang District, Krabi
- 🕒 Everyday, 08.30 – 16.30
- ☎ +6675661145

The highlight of Krabi Province, which all tourists around the world wish to experience, is scuba diving in Ao Phi Ley of Phi Phi Islands, where beach-lovers dubbed “heaven on earth”. Not only coral reef, the beach and water here are equally exceptional as well.





## CYCLING IN PALM FOREST AT BAAN THAM SUA

✉ Ao Luk Community Based Tourism Network Center, 105 Moo,  
Ao Luk Tai Subdistrict, Ao Luk District, Krabi

🕒 Everyday, 08.00 – 15.00

☎ +66898664954

If cycling is your favorite activity, you shouldn't miss cycling along this trail. Starting from Ao Luk Community Based Tourism Network Center, riding your bicycle along the most beautiful road in Krabi, passing by Tham Sua Noi Temple into a green palm forest, enjoying scenic view of nature on both sides of the road and visiting Sra Nam Phut, a small pond inside swamp forest where the water pops up when there is noise or clapping hands. Then, ride along to visit Baan Tham Sua Community, one of the most charming communities of Krabi. This cycling trail will give you once-in-a-lifetime experience that you would never forget.



## KAYAKING IN LOD CAVE



- ✉ Than Bok Khorani National Park
- 🕒 Everyday, 08.30 - 16.30
- ☎ +6675681096 (Than Bok Khorani National Park Information Service), +66866915151 (Ao Luk Community-Based Tourism Network)

There are many things to see at Ao Luk. One of the places you shouldn't miss when visiting Ao Luk is Tham Pee Hua Toe and Tham Lord. Normally, travelers would visit these two places by Rue Hua Tong. However, Rue Hua Tong doesn't work out during the high tide so rowing Kayak is a good option to visit the places. Not only you would enjoy the atmosphere but it is also an excellent exercise at the same time.





## WHAT TO EAT

### KHANAB NAM VIEW SEAFOOD RESTAURANT

- ✉ Baan Koh Klang, Klong Prasong Subdistrict,  
Mueang District, Krabi
- 🕒 Everyday, 09.00 – 21.00
- ☎ +66859333971, +66862667555

A halal seafood restaurant with cool and breezy environment of Krabi River on one side and mangrove forest on the other, the restaurant provides delicious food for your mouth and exquisite view for your eyes. Recommended menu here is “Hoi Chak Teen” or dog conch seashells, a famous food of Krabi. Dog conch seashells are rinsed until clear of any grains of sand and dried in the sun for 2 days before they can be cooked.



## KRUA THARA RESTAURANT

- ✉ Nopparat Thara Beach, Ao Nang Subdistrict, Mueang District, Krabi
- 🕒 Everyday, 11.00 – 21.00
- ☎ +6675637361

Krua Thara Restaurant is a famous seafood restaurant in Nopparat Thara and Ao Nang Beach, popular to both Thai and foreign tourists for high-quality food that is fresh and delicious with reasonable price and clean environment. If you're looking for fresh affordable seafood, Krua Thara is a nice option.



## RATCHAROS DIM SUM

- ✉ 289/15 Auttarakit Rd., Pak Nam Subdistrict, Mueang District, Krabi
- 🕒 Everyday, 06.00 – 12.00
- ☎ +66864799922

Dim sum is a popular breakfast in Krabi, because a majority of people here are Muslim and Thai-Chinese since the beginning. It is a Thai-Chinese culture to have dim sum with hot tea for maximal energy in the morning. Ratcharos Dim Sum is one of the most popular restaurants in Krabi, opening from early morning and always sold out by noon, proving how popular it is.



## BANG NARA ROTI

- ✉ 92/37, Luang Por Rd., Pak Nam Subdistrict, Mueang District, Krabi
- 🕒 Everyday, 06.00 – 13.00 and 18.00 - 22.00
- ☎ +66828020798, +66814788486

Bang Nara Roti is a famous Roti (a round, flat, fried bread) restaurant in Krabi. The owner is originally from Narathiwat, a Southern province in Thailand, and, therefore, is naturally good at making Roti. He opened this restaurant selling Roti with curry since moving to Krabi. Bang Nara's Roti has a unique sticky and soft texture, and when eating with hot, strong-flavored beef or chicken curry, makes perfect combination.



## CARABAO DUCK NOODLE

- ✉ 243, Luang Por Rd., Pak Nam Subdistrict, Mueang District, Krabi
- 🕒 Everyday, 10.00 – 22.00
- ☎ +66819564687

Although noodle sounds like an ordinary dish you can find everywhere, Carabao noodle is far from ordinary. The secret of their noodle is that they put in quail eggs instead of meat ball, and their soup has a strong flavor that you don't need any more seasoning. Not only noodle, Carabao Duck Noodle Restaurant also serves roasted duck with rice, chicken noodle, and stewed chicken with gourd soup.



## PAK CHONG RICE AND CURRY RESTAURANT

- ✉ 299, Moo 2, Ao Luk Nuea Subdistrict, Ao Luk District, Krabi
- 🕒 Monday - Saturday, 07.00 – 16.00
- ☎ +66819700019

Kang Tai, or Thai Southern Curry, is a world-famous menu, with rich and spicy flavor and delicious herbal smell. The only obstacle for foreigners in eating this curry is definitely its very spicy taste that even some Thai people have to wave a white flag. However, Pak Chong Restaurant has toned down the spiciness, giving the curry more smooth taste but still preserving its herbal and spice smell. Recommended menu is Kang Pa Kati, which is a spicy vegetable soup with coconut milk and squirrels or wild boar meat that is very, very hard to find.





## WHERE TO STAY

### RAYAVADEE RESORT

- ✉ 214 Moo 2, Ao Nang Subdistrict, Mueang District, Krabi
- ☎ +6675620740-3
- 📍 [www.rayavadee.com](http://www.rayavadee.com)

Rayavadee resort is located in the middle of natural environment on Phra Nang Beach. The resort has a natural design to blend in with the evergreen background. It sprawls on 24 acres of stunning scenery, and is decorated in Thai architecture. Every room is different with unique designs, but rest assured that all of them are furnished and completed with facilities for your true comfy.





## BULAN ANDA BABA RESORT

✉ 208 Moo 3, Laem Sak Subdistrict, Ao Luk District, Krabi

☎ +6675685111, +66816159398

Decorated in Sino-Portuguese style, the resort was designed by a true Sino-Portuguese descendent. Inside, all hotel rooms have modern built-in furniture, and there are dining and drinking spots on the peninsula, with a breath-taking view of Andaman Sea in front of you.



## AO NANG AYODHAYA BEACH RESORT

✉ 112/2 Moo 2, Ao Nang Subdistrict, Mueang District, Krabi

☎ +6675661555

📍 [www.aonangayodhaya.com](http://www.aonangayodhaya.com)

A luxurious hotel on Nopparat Thara beach, the resort was built in old Siamese architecture, with beautiful atmosphere that reminds you of true Thai style. Each room has furniture and comfortable facilities inside.



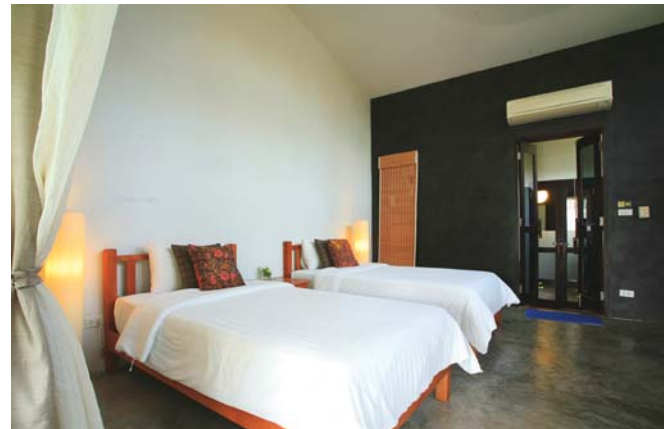
## ISLANDA HIDEAWAY RESORT

✉ Baan Koh Klang Moo 3, Klong Prasong Subdistrict,  
Mueang District, Krabi

☎ +66896142333

📍 [www.islandakrabi.com](http://www.islandakrabi.com)

The only resort located inside Baan Koh Klang Community, Islanda flaunts a peaceful and nature-oriented environment. The resort's vision is 'peaceful hideaway where relaxation can be truly felt'. And apart from serenity, you can also observe and experience Baan Koh Klang Muslim culture and lifestyle.





## RAI PREDA HOMESTAY

✉ 105 Moo 5, Ao Luk Tai Subdistrict, Ao Luk District, Krabi

☎ +66898664954

📍 [www.raipreda-homestay.com](http://www.raipreda-homestay.com)

A natural homestay in the middle of mountains, Rai Preda Homestay have historic-themed buildings, like Cave Man Ground, for recreational activities. Furthermore, a room in this homestay has a panoramic mountain view, so it is perfect for nature-lovers.





## WHAT TO BUY

### DRAWINGS AND PAINTINGS BY AO LUK ARTISTS

- ✉ OTOP Center Baan Tham Sua/Ao Luk Community  
Based Tourism Network Center
- ☎ +66866915151

Ao Luk is truly a land of history and arts. Ancient human skeletons and paintings on cave walls dating back over a thousand years ago were discovered here. Therefore, your souvenirs from this historic place should be a piece of arts. These paintings and drawings are created by Ao Luk philosophers who understand its history and culture by heart.





## RUE HUA TONG MODEL

✉ OTOP Center, Baan Koh Klang, Klong Prasong Subdistrict, Mueang District, Krabi

☎ +66815690224

Rue Hua Tong, or Long Tail Boat, are Krabi's iconic main transportation that are used in fishery and everyday life. There are Rue Hua Tong models available for you to buy as souvenir. They are very similar to the real boats, built with the same assembling process using exactly the same down-scaled parts. You can also learn history of the boats and its significance in Krabi fishery.



## SANGYOD BROWN RICE

✉ Agricultural Center, Baan Koh Klang, Klong Prasong Subdistrict, Mueang District, Krabi

☎ +66869434579

Local nutrient-rich rice strain full with iron, phosphorous, and vitamin B3 or niacin, Sangyod Rice was originally from Phatthalung Province. However, when this rice was cultivated at Baan Koh Klang Subdistrict, due to different environment of salted water and hot weather, it tastes differently with mildly crispy texture, scented smell and delicious red color.



## ANTIQUE BEADS

✉ OTOP Center Store, 185-187, Uttarakit Rd., Pak Nam Subdistrict, Mueang District, Krabi

☎ +6675622454, +6693576 8282

Klong Thom Antique Beads are an important evidence that reveals Krabi geography a thousand years ago. They also reflect the culture and fashion of ancient Krabi people back then. Today, you can buy a replication of Klong Thom Antique Beads as a souvenir, reminding you of Krabi's vivid and unique history.

## SHRIMP PASTE

✉ 34/3 Moo 2 Baan Ao Nam, Laem Sak Subdistrict, Ao Luk District, Krabi

☎ +66612454882

Shrimp paste is a kind of spice that is widely used in Southeast Asia. It is an important ingredient in Thai cuisine, such as many types of curry, spicy shrimp paste serving with vegetables, or even as a sauce eating with fresh fruits like mango. Shrimp paste from Baan Ao Nam is one of the high-quality products from Southern Thailand. Made promptly from freshly caught shrimps, the paste here is fresh, clean and deliciously red-colored, popular to Thai and foreigners alike.



## PATEH TROUSERS

- ✉ Bulan Anda Baba Resort, 208 Moo 3, Laem Sak Subdistrict,  
Ao Luk District, Krabi
- ☎ +6675685111, +66816159398

Pateh is Southern local product that is popular because of its light and breezy fabric with colorful patterns that are unique to each region. In the past, Pateh cloths are made in the form of a large piece of cloth worn as long skirt that is quite inconvenience and easily loosened. Therefore, Southerners are now making them into trousers that is more fitting and suitable for water transportation, yet still preserving their unique regional patterns.

---

### GOOD TO KNOW :

batik cloths, or 'Pateh' in Thai, is a word used to call a piece of fabric made by wax-resist dyeing technique, creating an area free of color. Another similar word is 'Ba-tik' or general batik cloth that you know. The difference is that 'Pateh' cloth has elaborative patterns, while 'Batik' has simpler ones.



# GETTING THERE



## CAR

---

Taking Highway No. 4 through Petchburi, Prachuap Khiri Khan, Chumphon, Ranong and Phangnga to Krabi. The total distance is 946 km and will approximately 8 - 9 hours on the road.



## BUS

---

There are buses that leave from Bangkok Bus Terminal (Southern) everyday. It takes approximately 9-10 hours to get to Krabi.

The following are bus companies that provide bus services to Krabi.

- Lignite Tour Co., Ltd., Tel. +6628946151-2
- The Transport Co.Ltd., Tel. +6624341200, +6624347192



## TRAIN

---

From Bangkok, getting off at Trang station or Thung Song station at Nakhon Si Thammarat, then travel further by serviced car or taxi to Krabi. It takes approximately 13 - 14 hours in total. For more details, please call 1690 or [www.railway.co.th](http://www.railway.co.th)



## PLANE

---

There are currently 4 airlines that fly directly from Bangkok to Krabi on a daily basis.

- |   |  |
|---|--|
| ● Thai Lion Air<br>Tel. +6625299999<br>( <a href="http://www.lionairthai.com">www.lionairthai.com</a> ) | ● Thai Airways<br>Tel. +6623562222<br>( <a href="http://www.thaiairways.com">www.thaiairways.com</a> ) |
| ● Bangkok Airways<br>Tel. 1771<br>( <a href="http://www.bangkokair.com">www.bangkokair.com</a> )        | ● AirAsia<br>Tel. +6625159999<br>( <a href="http://www.airasia.com">www.airasia.com</a> )              |







# LAMPANG PROVINCE

## ROT MA & ROT SI LOR

---

### **1 OF THE 12 MUST-GO CITIES, WHERE ANCIENT BEAUTY REMAINS UNTOUCHED BY TIME**

This ancient city in Northern Thailand, established over 1300 years ago, used to be the center of multiracial society, including Burmese, English, and Tai Yai, in the booming age of forestation. Lampang City possesses the charm of Lanna civilization mixed with Burmese and Tai Yai culture and lifestyle. Moreover, the province is also known for its stunning Burmese architectures, with the largest number of Burmese structures in Thailand. The downshifting lifestyle of people in Lampang is apparent. You can see Rot Ma (horse-drawn carriage) passing everywhere in the city, the scene rarely seen anymore in Thailand. And this type of transportation has become signature of the province. You can rest assured that this timeless, small city will provide an unforgettable experience.





## **FYI**

Lampang's Rot Ma are built in Queen Victoria-style, with 4 wheels, large back seat for 2 people and extra seats for another 2 people.

There are several sightseeing services by Rot Ma available to choose from, starting at 150 Baht for short trip and 300 Baht for 40-minute long trip. The cost for an hour carriage service is about 400 Baht (prices are variable, based on time and routes)

---

# **ROT MA (HORSE-DRAWN CARRIAGE)**

---

## **CITY TOUR IN HORSE-DRAWN CARRIAGE, THE SIGNATURE OF LAMPANG**

The classic Rot Ma was first used by Bunyawat Wongmanit, the last ruler of Lampang, in 1814. During that time, all merchandise from Bangkok to Chiangmai must be sent here first. Rot Ma was used to transport the merchandise from train station to the city. Nowadays, Lampang is the only province that commonly uses Rot Ma, especially for tourism, and also the only place where Rot Ma can be legally ridden in public highway. Rot Ma service centers are at Wiang Tong intersection and in front of City Hall.





18-2186

5-204

SUZUKI



NIFFON

2000-11 2000/11

1000  
1000  
1000

# ROT SI LOR (PICKUP TRUCK TAXI)

---

**IF ROT MA IS TOO SLOW FOR YOU,  
ROT SI LOR IS THE ANSWER.**

Pickup truck taxi for transportation inside Lampang City, commonly known to Lampang people as Rot Si Lor (four-wheeled vehicle), was initially used for transportation from governmental offices to Chinese Market and Downtown. Nowadays, Rot Si Lor are divided into 2 types according to their colors and routes.



1. **Yellow-green** Rot Si Lor runs in short loops inside Lampang City. The taxi will take you to your destination inside the city.



2. **Blue** Rot Si Lor is a long-distance taxi service, running from one district to another. You can take this type of taxi at the station in Kad Kong Ta.

# TRAVELING PLAN 1

LAMPANG HERB  
CONSERVATION

LUNCH AT  
KHRUA MUKDA  
RESTAURANT

GO CAFÉ

BURKLERK GYM

DHANABADEE CERAMIC  
MUSEUM







# A BEAUTY AND WELLNESS JOURNEY IN TIMELESS LAMPANG

**A TRIP INCLUDING A RIDE IN ROT MA AND ROT SI LOR FOR LADIES WHO FANCY ‘LAMPANG, AN UNTOUCHED CITY BY TIME’.**

Witness the beauty of Lampang City from inside the classic Lampang’s horse carriage. Along the way, you will see Thai Bank Museum on former location of the first bank of Lampang. Next stop is ‘Go Café’, a popular coffee shop with relaxing and scented atmosphere, where you can enjoy a delicious cup of coffee in the morning. After that, the carriage will take you to Lampang Train Station, the former center of prosperity in Lampang. The end of the trip via Rot Ma is Burklerk Gym Thai Boxing Center, where

you can challenge yourself and learn the cool martial art of Thai kick boxing from nationally certified coaches. After that, take a pickup truck taxi, or commonly known in Thai as ‘Rot Si Lor’, to Khrua Mukda Restaurant, a famous place for local cuisine, where you can enjoy delicious and healthy lunch break. Then, go to Dhanabadee Ceramic Museum where you can learn to create and paint your one and only masterpiece. This slow living trip ends in a high note at Lampang Herb Conservation where you can wash away all tiredness with ancient Thai massage.

# TRAVELING PLAN 1

5

THAI MASSAGE  
AT LAMPANG HERB CONSERVATION



🕒 15.00 - 15.45



🕒 09.45 - 11.00

2

THAI BOXING  
AT BURKLERK GYM BOXING CENTER

1

CITY TOUR ON ROT MA  
AND STOP AT GO CAFÉ



🕒 08.30 - 09.45

**3** LUNCH AT  
KHRUA MUKDA RESTAURANT

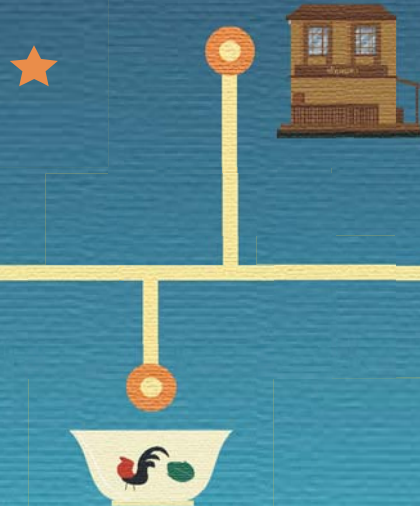


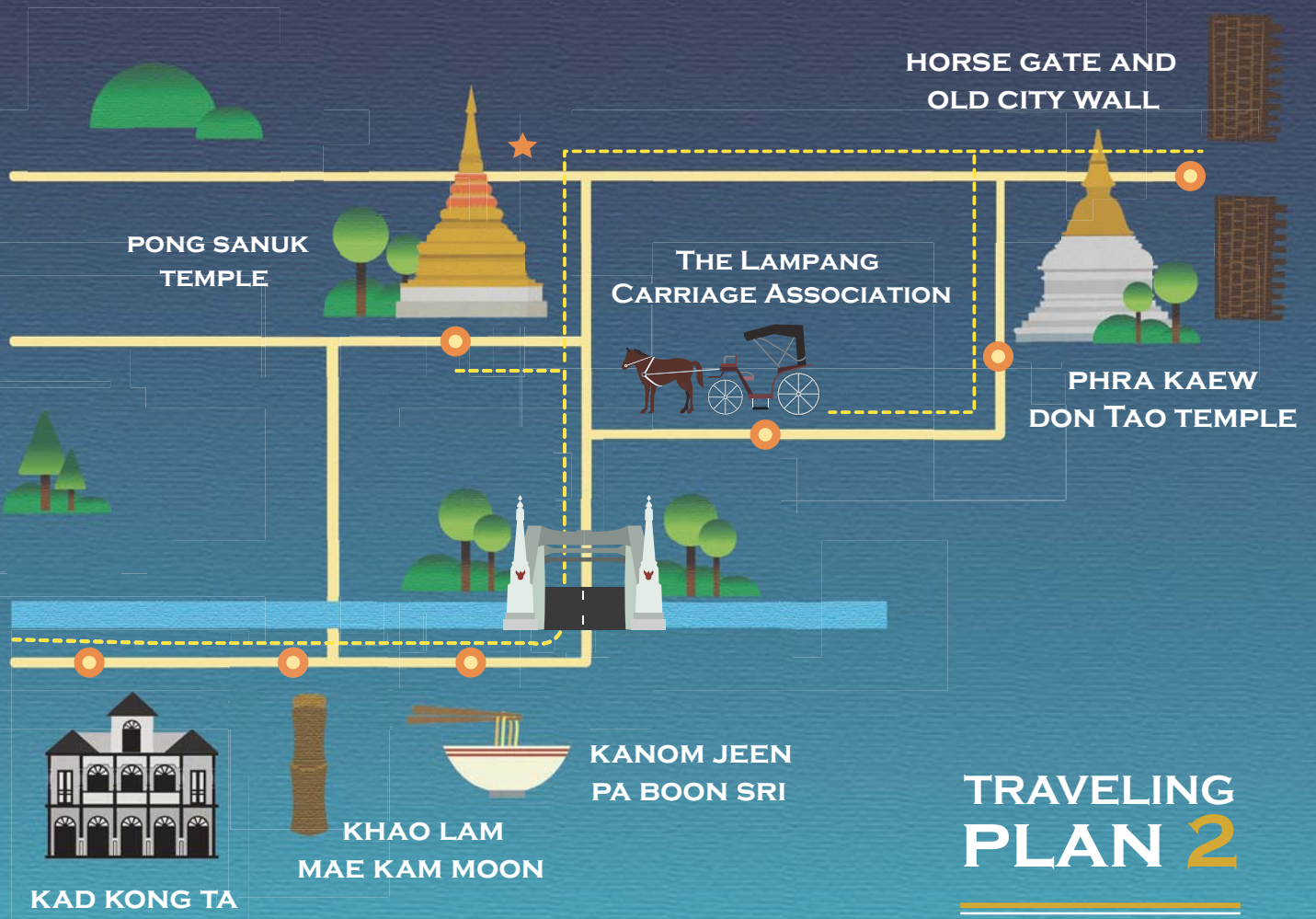
🕒 11.10 - 12.30



🕒 13.00 - 14.20

**4** DHANABADEE CERAMIC MUSEUM





HORSE GATE AND  
OLD CITY WALL

PONG SANUK  
TEMPLE

THE LAMPANG  
CARRIAGE ASSOCIATION

PHRA KAEW  
DON TAO TEMPLE

KAD KONG TA

KHAO LAM  
MAE KAM MOON

KANOM JEEN  
PA BOON SRI

TRAVELING  
PLAN 2



## **A JOURNEY BACK TO LAMPANG ANCIENT ERA**

---

### **TRAVELING VIA ROT MA TO THE PAST OF LAMPANG, THE CITY UNTOUCHED BY TIME.**

Start the day by riding Rot Ma past the city's Clock Tower and head to Kad Kong Ta, also known as Chinese Market. It is located at the bank of Wang River, one of the main rivers of Northern Thailand. Kad Kong Ta and its surrounding area are the heart of Lampang modern period, or Nakhon Lampang Era (Lampang City Era). You can walk along the market and witness the beauty of ancient architectures such as Mong Ngow Sin Building. Then, take a break and have local menus such as Khao Soi (Northern noodle with curry soup) and Kanom Jeen Nam Gneaw (rice noodle with spicy pork sauce) for breakfast at Kanom Jeen Pa Boon Sri Restaurant near Rassada Bridge. As for dessert, try some Khao Lam (sticky rice and black beans in sweet coconut milk) from Mae Kam Moon, the signature dessert of Lampang that has been sold for over 80 years. After you're happy and full, continue your trip to the next period, the Wieng Lakor Era of Lampang, dating back 700 years ago. Go to the heart of Wieng Lakor Era at Pong Sanuk

Temple, where the former City Pillar of Lampang was originally erected before relocation to current City Hall. In 2008, Viharn Phra Chao Pun Ong (a pavilion containing over a thousand Buddhist tablets) in Pong Sanuk Temple won an award for Cultural Heritage Conservation in Asia-Pacific Region from UNESCO. After that, get back on the Rot Ma carriage and head to the first Era of Lampang, the Kelang Nakhon City Era, dating back 1,300 years ago. The center of Kelang Nakhon was at Phra Kaew Don Tao Sushadaram Temple where the Emerald Buddha Image was previously placed at for 32 years. You will also spot a god of love, Cupid, sculpture at this Buddhist hall. Then, visit a 1,300 year-old Horse Gate and Old City Wall, before ending your trip of retracing 3 Eras of Lampang at Lampang Carriage Association to learn about the history of Rot Ma, including their assembling process, and some significant carriages throughout the city's history, such as the stunning Royal carriage.

# TRAVELING PLAN 2



🕒 09.45 - 10.30

3 PONG SANUK TEMPLE



🕒 08.30 - 09.00

1 KAD KONG TA



🕒 09.00 - 09.40

2 BREAKFAST AT KANOM JEEN PA BOON SRI  
AND TRY KHAO LAM MAE KAM MOON



🕒 10.40 - 11.40



PHRA KAEW DON TAO TEMPLE 4



🕒 10.50 - 12.30

6

THE LAMPANG  
CARRIAGE ASSOCIATION



🕒 11.40 - 11.50

5 HORSE GATE AND  
1300 YEAR-OLD CITY WALL





## WHERE TO GO



### NAKHON LAMPANG RAILWAY STATION

- ✉ Junction of Prasan Maitri Rd. and Surane Rd., Sob Tui Subdistrict, Mueang District, Lampang
- 🕒 Everyday, 24/7
- ☎ +6654318648, +6654217024

Nakhon Lampang Railway Station was built in a mixed style of Western and Lanna architectures. In 1993, this station was selected as the Outstanding Conservation Building. Now, it has become a popular spot for photography in Lampang.



### BHUMI LAKHON MUSEUM

- ✉ Chatchai Rd., Clock Tower Intersection, Sob Tui Subdistrict, Mueang District, Lampang
- 🕒 Monday - Friday, 08.30 - 16.30
- ☎ +6654237237 extension 110, +66815940411

Bhumi Lakhon Museum is the perfect place to discover way of life in Lampang through folk stories and history of each Era of the city, with multimedia technology that helps illustrate ancient city of Lampang.





## HORSE GATE AND OLD CITY WALL

- ✉ Pratu Ma Rd., Wiang Nuea Subdistrict, Mueang District, Lampang
- 🕒 Everyday, 24/7

Horse Gate was built in B.E. 1247 to protect the city from invasion of enemy during war time. The wall was built in ancient design that used wood to build a base and frame, and put clay on top. The height of the wall is increased by piling more clay on top of the original wall.



## WAT PONG SANUK (PONG SANUK TEMPLE)

- ✉ Pong Sanuk Rd., Wiang Nuea Subdistrict, Mueang District, Lampang
- 🕒 Everyday, 08.00 - 18.00

Pong Sanuk Temple is a main holy temple of Lampang. Inside, the temple is divided into Pong Sanuk Nuae (North part) and Pong Sanuk Tai (South part). It was built 700 years ago in the design that demonstrates an ancient belief of Mount Meru and the universe. Lampang City Pillar was originally erected here and Viharn Phra Chao Pun Ong in Pong Sanuk Temple also won an award for Cultural Heritage Conservation in Asia-Pacific Region from UNESCO in 2008.

## WAT PHRA KAEW DON TAO (PHRA KAEW DON TAO TEMPLE)

- ✉ Pra Kaew Rd., Wiang Nuea Subdistrict,  
Mueang District, Lampang
- 🕒 Everyday, 08.00 - 17.00

As a 1,300 year old, third class royal temple, Phra Kaew Don Tao is believed to be the center of Kelang Nakhon City (Lampang City in the first Era). In the past, this temple is used to house the Emerald Buddha Image for 32 years, and has inspired the legend of Phra Kaew Don Tao Buddha Image which is another important holy Buddha image of Lampang made of emerald. The temple has a calm and relaxing evergreen atmosphere, and there are several historical constructions that reflect the influence of Lanna, Chiang Saen, and Burmese architectures on Lampang style. Example include, Don Tao Pagoda, which is a large pagoda built in Lanna architecture. Next is Viharn Lai Kum Sushadaram, a hall built by Chiang Saen construction team with Chiang Saen-styled Buddha Image and exquisite wall art decorated with golden lines. And finally, there is Viharn Bua Kem Buddha, a hall housing a Buddha image replication of the original one in Mandalay, Myanmar. The roof of this hall was built in Burmese style with 7 tiers of delicate wooden details. You will be surprised to see wooden sculptures of the Western God, Cupid, in front of the hall and in the ceiling.





## BAAN SAO NAK

- ✉ 6 Ratwattana Rd., Wiang Nuea Subdistrict, Mueang District, Lampang
- 🕒 Everyday, 10.00 - 17.00
- ☎ +6654227653, +66869107408
- 🎫 Admission fee: 30 Baht including beverage
- 📍 [www.facebook.com/Baansaonak](https://www.facebook.com/Baansaonak)

Baan Sao Nak (Sao Nak House) was built in 1895 by a wealthy merchant called 'Mong Jun Ong', ancestor of Juntaraviroj family. The old teak house was built in mixed Burmese and Lanna styles, and there is a striking number of 116 posts, that have become prominent part of the house, and hence, the name 'Baan Sao Nak' that means numerous posts. Inside, there is main living space that comprises of several smaller units, and a 133 year-old Sarapee tree in front yard. Some folk story says that in the past, Baan Sao Nak used to be a place for welcoming foreign guests of Lampang, and organizing Northern style festive events and weddings.



## LAMPANG CARRIAGE ASSOCIATION

- ✉ Pa Mai Rd., Wiang Nuea Subdistrict, Mueang District, Lampang
- 🕒 Everyday, 08.00 - 17.00 ☎ +6654224166

Established in 1949, now Lampang Carriage Association has become a manufacturing and fixing center for all Queen Victoria styled carriages. Here you can learn about the history of carriage and manufacturing process. Plus, there is also Lampang Veterinarian Clinic that provides medical services for horses in Lampang Province.



## WAT PHRA THAT LAMPANG LUANG (PHRA THAT LAMPANG LUANG TEMPLE)

✉ Lampang Luang Subdistrict, Ko Ka District, Lampang

🕒 Everyday, 08.00 - 17.00

An iconic holy temple of Lampang Province, folk story says that during the time of Princess Jamthevi in late 15th century, this temple was the most flawless wooden temple in Thailand, with stunning and valuable structures, such as Phra That Lampang Luang pagoda, Main Royal Hall, Hall of Lord Buddha, Nam Tam Hall, and Arch of Lord Buddha Footprint. Furthermore, this temple is the house of 'Phra Kaew Don Tao', an emerald Buddha image, the holy relic of Lampang Province. The image captures Lord Buddha in meditating posture and was sculpted from jade in Lanna style. An annual worship event to Phra Kaew Don Tao is held on every full moon day of November.



## THAI BANK MUSEUM

- ✉ Chatchai Rd., Mueang District, Lampang
- 🕒 Monday - Friday, 08.30 - 16.30
- ☎ +6654225062-3

This museum used to be a Lampang branch of Siam Commercial Bank. With classic architectural design, the Association of Siamese Architects under the Royal Patronage selected this building to be the Outstanding Conservation Building

in 1997. After that, Siam Commercial Bank redecorated this building and changed it into Thai Bank Museum that is open for the public to learn about history of Thai Bank. On the ground floor, there is an exhibition where there are instruments from the first pioneer days of the bank, such as account books, bank counter, and typewriters. The second floor exhibits a living space of Mom Rajawongse Kukrit Pramoj who used to be a manager here. Besides, this museum is open for group touring only.



## THINGS TO DO

### LAMPANG HERB CONSERVATION

- ✉ 177 Moo 12, Baan Khelangthong, Bohaeo Subdistrict, Mueang District, Lampang
- 🕒 Everyday, 08.00 - 19.00
- ☎ +6654313128, +6654313918
- 🌐 [www.lampangherb.com](http://www.lampangherb.com)

The perfect place for learning and shopping for Thai herb. The founder of this place spent over 10 years to study the benefit of each kind of herb and creating more than 150 herbal products for you to choose from, including ginkgo leaf tea and safflower tea. Moreover, there are various types of massage with homemade herbal product available for you to try, from Thai traditional massage, to foot massage, herbal oil massage, and herbal steam spa. Also, the conservation organizes a pathway through herbal garden for visitors to take a stroll.



## BURKLERK GYM

- ✉ Naguam Soi 1 Rd., Sop Tui Subdistrict, Mueang District, Lampang
- 🕒 Everyday, 08.00 - 11.00 and 17.00 - 19.30
- ☎ +66913839577, +66827660682

At Lampang's famous boxing camp teaching by Master Burklerk Pinsinchai, the world renowned Thai boxing champion, there are courses you can participate here, from basic course that takes a few hours to professional course that takes several days to learn. Nowadays, Master Burklerk has students from around the world who flew in to study under him.



## KAD KONG TA WALKING STREET

- ✉ Talad Gao Rd., Suan Dok Subdistrict, Mueang District, Lampang
- 🕒 Saturday - Sunday, 17.00 - 22.00
- ☎ +66831545834

Located at the bank of Wang river, Kad Kong Ta used to be an important center of transportation in the river in the past. Here you will enjoy beautiful scenery of buildings and houses with unique designs, such as Mong Ngow Sin Building, Fong Lee Building, Deang Building, Lampang Arts Center, and many more. On weekend nights, this market turns into walking street with plenty of vibrant and exotic stands, making this a perfect place for you to observe Lampang people lifestyle, taste the cuisine, and shop for local products.





## **KAD MUA KUA LANG AT THANON SAI WATTANADHAM (THE CULTURAL ROAD)**

- ✉ Wang Nua Rd., Mueang District, Lampang
- 🕒 Friday, 16.00 – 21.00

Thanon Sai Wattanadham, or Cultural Road, is on Wang Nuea Street. There used to be City Wall on the exact spot of this road, and many people lived on both sides of the wall in the past. It is an interesting and magnificent road. On every Friday from 4 pm, there is a festive event called ‘Kad Mua Kua Lang’, where there are many local products and cuisine available to choose from, and cultural activities to participate in throughout the year.





## DHANABADEE CERAMIC MUSEUM

- ✉ 32 Wat Jongkheam, Phrabath Subdistrict, Mueang District, Lampang
- 🕒 Everyday, 9.00 – 17.00
- ☎ +6654821558-9 extension 103
- 📍 [www.dhanabadeeceramicmuseum.com](http://www.dhanabadeeceramicmuseum.com)

This is a selling and learning center of ceramic materials in Lampang. The museum was built by Mr. E (Chin Simyu) who discovered high-quality kaolin in Lampang, and used it to create the famous Chicken-patterned Ceramic Bowl you see today. Now, Dhanabadee Ceramics is passed on to the second generation of successors, and you can see more modern ceramics in the market. Apart from learning history of ceramics in Lampang, you will also see the world's smallest Chicken-patterned Bowl and largest Chicken-patterned Bowl made of gold. Inside the museum, there is an ancient Dragon Kiln that has been enlisted as valuable historical site by Fine Arts Department. Plus, the museum provides a space for tourists to paint their own ceramic.





## WHAT TO EAT

### PRANOM THAI SWEET

- ✉ Thipchang Rd., Hua Wiang Subdistrict, Mueang District, Lampang
- 🕒 07.00 - 21.00
- ☎ +6654218021
- 📍 [www.facebook.com/pranomthaisweets](http://www.facebook.com/pranomthaisweets)

This Thai traditional sweets shop that has been in business for 60 years began from Ms. Pranom's love of making Kanom Thai (Thai sweets) for religious festival, and grew from family secret recipe to Lampang famous sweets shop. The brand is known for its Kanom Shun (sweet sticky rice cake made into layers), Thong Yip (egg yolk cake in flower shape), Thong Yaud (egg yolk cake in ball shape) and a set of 9 Thai sweets for auspicious occasions for any festive events or a gift.



## KHRUA MUKDA

✉ Sanambin Rd., Phrabath Subdistrict, Mueang District, Lampang

🕒 08.00 - 15.00

☎ +6654315696, +66813226305

The famous local hot spot in Lampang, Khrua Mukda serves various local cuisine for you to try. The most celebrated dish here is rice noodle that you can choose a sauce to eat with. There are Nam Gneaw (spicy pork sauce), Green Curry sauce, and Kang Pa (hot herbal sauce with ground fish). Their grilled chicken is equally tasty as well.



## KANOM JEEN PA BOON SRI

✉ Talad Gao Rd., Hua Wiang Subdistrict, Mueang District, Lampang

🕒 09.00 - 16.00

☎ +6654322162

Local restaurant near Rassadapisek Bridge is famous for Khao Soi (Northern noodle with curry soup), Kanom Jeen Nam Gneaw (rice noodle with spicy pork sauce) and Khao Gun Jin (rice ball mixed with pork and pig blood). All dishes are cooked to the best quality by Pa Boon Sri (Aunt Boon Sri) who wakes up at 4 am every day and personally make every sauce herself. Plus, there is Thai dessert made daily with fresh ingredients available on each day.



## GO CAFÉ

✉ 363 Chat Chai Rd., Sob Tui Subdistrict, Mueang District, Lampang

🕒 08.00 - 17.30

☎ +6654218828

📍 [www.facebook.com/GoCafeLampang](http://www.facebook.com/GoCafeLampang)

A pleasant coffee shop with relaxing atmosphere, Go Café is Lampang first coffee shop with freshly roasted coffee. Go, the owner, was an architect who got tired of city life in Bangkok. He uses coffee bean roasted from his own roast house to maintain the quality of every cup of coffee. Today, Go Café is a popular meeting spot for coffee lovers in Lampang.



## SABIANG RESTAURANT

✉ 206 Moo 1, Lampang-Ngaw Highway. Pichai Subdistrict, Mueang District, Lampang

🕒 11.00 - 22.00

☎ +6654315085

Riverside restaurant near Wang River possess a relaxing Lanna-styled home restaurant. Famous menu here include Northern dishes such as fried chicken with Makhwaen (Northern herb), Nam Prik Num (spicy roasted eggplant dip), Sai Uah (Northern sausage with herb), and spicy minced pork, plus other traditional Thai menu such as deep fried catfish with spicy ginger and salted egg sauce, Acacia omelet in spicy and sour soup, etc.



## ROS NANA RESTAURANT

- ✉ 70 Suandok Rd., Suandok Subdistrict, Mueang District, Lampang
- 🕒 07.30 – 16.30
- ☎ +6654225936, +66817645378

Over 30 years, Ros Nana Restaurant has been serving 'set menu' that comprises of 5 popular dishes. They are Shanghai sausage, boiled duck in sweet brown soup, fried pork with chili, ham stew, and delicious vegetable soup. Furthermore, the restaurant also serves single dishes such as rice with fried duck and basil, and fried rice with minced pork and black olive, and fresh coffee for a drink.





## WHERE TO STAY

### THE RIVERSIDE GUEST HOUSE

- ✉ 286 Talad Kao Rd., Mueang District, Lampang
- ☎ +6654227005
- 📷 600 – 2500 Baht
- 🌐 [www.theriverside-lampang.com](http://www.theriverside-lampang.com)

A riverside boutique hotel with peaceful and relaxing atmosphere. This is the first boutique hotel in Lampang with 18 rooms available. The owner redecorated an old wooden house with his wooden furniture and personal collection, and turned it into a pleasant hotel with breezy garden. Today, this hotel is a tourist's favorite spot in Lampang.





## WIENG LAKOR HOTEL

- ✉ 138/38 Phaholyothin Rd., Suandok Subdistrict, Mueang District, Lampang
- ☎ +6654316427
- 📷 1200 – 3500 Baht
- 🌐 [www.lampangwienglakor.com](http://www.lampangwienglakor.com)

A Lanna-styled hotel, decorated in delicate details with wood, boasts its Northern ambiance to all guests. There is a restaurant in evergreen waterfall garden where you can relax and have a nice dinner.

There are famous for Northern dish, with special recommendations such as Wieng Lakor appetizer, Mueang appetizer, spicy minced pork, Hunglay soup, and stewed pork rib soup. Wieng Lakor is a medium-sized hotel with 100 rooms available and a beautiful large hall that is ideal for seminar and weddings. It is located in downtown of Lampang and close to many tourist attractions. With a unique style, Wieng Lakor Hotel is popular among tourists and has been for over 20 years.



## BAAN SUCHADAA LAMPANG RESORT

- ✉ 97 Moo 3, Ton Thong Chai Subdistrict, Mueang District, Lampang
- ☎ +66870528390, +66614104040
- 👁 2500 – 4900 Baht
- 📍 [www.baansuchadaa.com](http://www.baansuchadaa.com)

Baan Suchadaa is a private property that offers 7 rooms for guest over 18 year-old only. The ambiance is luxury, peaceful, calm and private as doors only open for staying guests. Wonderful garden, Thai architecture, infinity salt water pool, and fabulous view on the paddies are awaiting for world travelers. You will find at Baan Suchadaa a warm, relaxing, home-like atmosphere that makes you immediately feel at ease.





## LAMPANG RIVER LODGE RESORT

- ✉ 330 Moo 11, Chompoo Subdistrict, Mueang District, Lampang
- ☎ +6654209778-9, +6659336640-1
- 🏠 2500 – 4900 Baht
- 🌐 [www.lampangriverlodge.com](http://www.lampangriverlodge.com)

Lampang River Lodge Resort aims to facilitate all trips in Lampang. With Lanna-styled villa surrounded by nature, the resort is located on a 25-acre of evergreen forest that provides cool shades during the day. Lampang River Lodge Resort has 60 rooms, all decorated in beautiful Northern arts of Lanna.





## WHAT TO BUY

### KHAO LAM MAE KAM MOON

✉ Charoen Prathed Rd., Wiang Nuea Subdistrict, Mueang District,  
Lampang

🕒 07.00 - 12.00

☎ +66844876527, +66869150378

Since World War II, this Khao Lam shop has been in business for over 80 years. Their Khao Lam (sweet sticky rice with black beans and coconut milk) is famous for sweet scented rice and sticky texture. The secret is that they use Keaw Gnoo Sticky Rice strain to make Khao Lam. The most popular product here is Khao Lam with soft custard on top. Only 200 pieces of Khao Lam are made daily to ensure only fresh products reach your hands. The process starts at 2 am, as early morning is a perfect time to stuff rice inside bamboo tubes. Then, all bamboo tubes are roasted together. The shop opens at 7 am and before noon, all 200 Khao Lam will be sold out. So you'd better come here before 12 pm.



## KHAO TAN KHUN MANEE

- ✉ 35 Ratsada Rd., Wiang Nuea Subdistrict, Mueang District, Lampang
- 🕒 07.00 - 19.00
- ☎ +6654312272
- [www.facebook.com/KhaotanKhunmanee](https://www.facebook.com/KhaotanKhunmanee)

Khao Tan (fried sticky rice dipped in watermelon juice) is traditional Lanna sweet. In the past, Khao Tan was used to serve guests in auspicious events. Khao Tan Mae Manee's secret is the selected old sticky rice grains that is cooked and mixed with watermelon and sugar cane juice, rendering a sweet delicious smell.





## TONG HENG KEE

- ✉ 63-65 Prasan Maitri Rd., Sop Tui Subdistrict, Mueang District, Lampang
- 🕒 07.00 - 19.00
- ☎ +6654217687, +66861983776

Famous shop for Kun Chiang (stiff sweet pork sausage), Moo Yong (dried shredded pork), and Moo Pan (sweet pork jerky), all are popular snacks from Lampang. This shop has been opened for 70 years, and is now in the hands of the 4th generation owners who have perfected unique family recipe of making pork jerky.





## INTRA OUTLET

✉ 212-214 Rob Wiang Rd. (Clock Tower Intersection), Suandok Subdistrict, Mueang District, Lampang

🕒 10.00 - 19.00

☎ +6654222482

Another famous ceramic vender in Lampang, Intra Outlet focuses on modern design of ceramic ware with hand painted decoration. This 5th branch located at Clock Tower Intersection sales products at reasonable price.



พลเอกชวลิต ยงใจยุทธ  
ผู้ว่าราชการจังหวัดสุพรรณบุรี  
เฉลิมพระเกียรติพระบาทสมเด็จพระเจ้าอยู่หัว  
ด้วยอนุสาวรีย์พระบาทสมเด็จพระเจ้าอยู่หัว



SCG



โทรศัพท์  
02 338 3388



แว่นท็อปเจริญ  
TOP CHAROEN OPTICAL

AIS



จากไกลไกล



# GETTING THERE



## CAR

---

From Bangkok, use Public Highway No. 1, also known as Phaholyothin Road. Drive through Ayutthaya, Ang Thong, Sing Buri, Chai Nat, Nakhon Sawan, Kamphaeng Phet, and Tak Provinces. Then, head to Lampang Province with total traveling time of 8 hours.



## BUS

---

There are buses leaving from Mo Chit 2 Bus Terminal every day, taking about 9 hours to Lampang. Bus companies that provide Lampang-bound buses are

- Nakhonchai Air Company, Limited, Tel. 1624 (www.nca.co.th)
- Sombat Tour Company, Limited, Tel. +6627951444 (www.sombattour.com)
- The Transport Company, Limited, Tel. 1490 (www.transport.co.th)



## TRAIN

---

Trains leaving Bangkok from Lampang are available every day from Hua Lamphong Railway Station. It takes approximately 13 hours by train. For more information, call 1690 or [www.railway.co.th](http://www.railway.co.th)



## PLANE

---

2 airlines provide direct flight from Bangkok to Lampang every day.

- Bangkok Airways, Tel. 1771 or [www.bangkokair.com](http://www.bangkokair.com)
- Nok Air, Tel. 1318 or [www.nokair.com](http://www.nokair.com)

### Rot Ma service information

The Lampang Carriage Association, Tel. +6654219255, +6654224166



# LOEI PROVINCE SKYLAB

---

**ONE OF TWELVE MUST-NOT-MISS CITIES THAT WILL ENRICH YOUR TRIP WITH HAPPINESS AND MARVELOUS EXPERIENCE.**

Located on the bank of Mekong River in the upper Northeastern region, Loei Province is small but spectacular. It is surrounded by mountains, mist and fertile natural landscape. Renowned as a province with cool temperature for year round, numerous travelers choose to visit the province to experience fresh chill and beauty of natural landmarks, such as Phu Kradueng, Phu Ruea, and Chiang Khan. Apart from impressive and graceful nature, Loei has several charming attractions awaiting to be visited. Intriguing primitive cultural heritages, distinctive local customs and traditions, idyllic way of life, unique local accents, and friendship and hospitality of locals will engrave joyful and wonderful moments with memorable experience to all visitors.







## FYI

'Skylab' is the name Udon Thani's locals call the new style of motor-tricycle. This new style motor-tricycle began its popularity throughout Udon Thani Province and nearby area in North-eastern region, including Loei, in 1979, which was the same year that the United States' first space station, 'Skylab', returned to the Earth.

---

# SKYLAB (MOTOR-TRICYCLE OR ISAN TUK-TUK)

---

**TAKE A CITY TOUR BY SKYLAB, EMBRACE CHILLING AND FRESH AIR, AND EXPERIENCE WONDERFUL SCENERY AND LANDSCAPE NOT TO BE MISSED.**

This colorful and eye-catching tricycle is widely known as ‘Samlor Skylab’ or ‘Isan Tuk-Tuk’. It is a tricycle which possesses motorcycles with engine, and passenger seat similar to minibus seat. This colorful, attractively designed, durable, and fuel-economical vehicle was invented in 1976 by Khun Atipong Opartkiattikul, the owner of a small motorcycle garage at Khok Wua Intersection, Amphoe Meuang, Udon Thani Province.



# TRAVELING PLAN 1



PHI TA KHON ARTS  
LEARNING CENTER



HOT-POT NOODLE  
AT JUM PA JAI SUKI

NERAMIT WIPATTASANA  
TEMPLE



PHON CHAI TEMPLE AND  
PHI TA KHON MUSEUM



MAE KUM PUN  
RESTAURANT



PHRA THAT SI SONG RAK

HOR NOI  
(SAN CHAO POR SAENG MUEANG)





# THE ART AND THE LEGEND OF PHI TA KHON

---

## TRAVELLING ROUTE BY SKYLAB TO EXPERIENCE DAN SAI PEOPLE'S AUTHENTIC CULTURE AND WAY OF LIFE.

Local market is perfect way to start the day. After enjoying traditional recipe of Laos hot-pot at Jum Pa Jai Suki, let's get in Skylab to begin the journey. First destination is Man River, one of the holy Upagupta ritual place in the Boon Luang ceremony (royal religious ceremony). Phon Chai Temple, the respectable temple of Amphoe Dan Sai and the place which is normally used to hold the Boon Luang ceremony, is where you can learn about the origin of Phi Ta Khon and Phi Ta Khon Museum is located there. Then, pass through Hor Noi or San Chao Por Saeng Mueang to worship Phra That Si Song Rak near Hor Luang, a place where ritual spiritualism is held to set the date of holding the Boon

Luang ceremony and Phi Ta Khon festival. Besides, Neramit Wipattasana Temple, the only temple which was built by the laterite in Thailand, is also worth visiting. After quite a journey, Mae Kum Pun Restaurant, an authentic local Thai cuisine, is ready to delight your appetite for lunch. Visitors can also make their own Northeastern traditional Sa-thorn vegetable salad and try to have a first-hand experience of Dan Sai people's traditional gastronomic culture. Finally, the good trip can be completed by learning the art of creating Phi Ta Khon masks from the past to present, participating in Phi Ta Khon mask-painting activity, and then take such mask as a souvenir home.





## FYI

Phi Ta Khon festival is a part of the Boon Luang religious ceremony, a big merit festival of the year which is held annually in July, with a Phi Ta Khon parade to entertain visitors. Traveling expenses by taking Skylab for the whole journey start from 300 Baht for 2 travelers. (Prices are variable based on time and routes.)

---



## INTERESTING FACTS

### AMPHOE DAN SAI

Amphoe Dan Sai is renowned as the historical city and the land of promise, honesty and friendship. The history lies in the legend regarding the resolve of two kings in Ayutthaya Era - King Maha Chakkraphat of Ayutthaya Kingdom and King Setthathirath of Vientiane. They established the amity relationship, ceased to wage wars, and were honest and no longer hostile to each other. To reaffirm the Treaty of Amity, Phra That Si Song Rak was then constructed as a symbol of a mutual friendship witness whereof. The pagoda symbolizes as the boundary between the two kingdoms as well. The famous religious building is worth a visit. These, thus, make Dan Sai locals to be peaceful, trustworthy, harmonious, honest, and friendly from the ancient time until now.



# TRAVELING PLAN 1



🕒 12.45-13.30

7 MAE KUM PUN  
RESTAURANT

5 PHRA THAT  
SI SONG RAK



🕒 11.00-11.45



8

PHI TA KHON ARTS  
LEARNING CENTER



🕒 13.45-15.45

6 NERAMIT WIPATTASANA  
TEMPLE



🕒 12.00-12.30





 08.30-09.30



1

HOT-POT NOODLE AT  
JUM PA JAI SUKI

2

MAN RIVER  
09.35 - 09.40



4

HOR NOI  
10.40 - 10.45



 09.45-10.30

3

PHON CHAI TEMPLE AND  
PHI TA KHON MUSEUM



STICKY RICE ALMS ROUND  
(TAK BAT KHAO NIEW)

CYCLING ALONGSIDE MEKONG RIVER  
AND THROUGH THE VILLAGE



TOFFEE COFFEE  
BY BAAN SUPICHAYA



NORTHEASTERN RICE NOODLE  
WITH SPICY SAUCE  
AT PA BUA WAN RESTAURANT



KAENG KHUT KHU

PHU TOK



TAI DAM CULTURAL CENTER,  
BAAN NA PA NAT



# TRAVELING PLAN 2



# CHIANG KHAN 101: 360 DEGREE IMMERSION

---

**TRAVELING ROUTE BY CHIANG KHAN SKYLAB  
TO LEARN AND ENJOY ACTIVITIES TOGETHER.**

The day starts with offering Sticky Rice Alms Round to monks (Tak Bat Khao Niew), the local tradition inherited for hundreds of years – same as practicing in Luang Prabang – the former capital of Laos. Then, Skylab is available to take you to experience Chiang Khan-style breakfast and Northeastern rice noodle with spicy sauce, a local popular food served with sticky rice, at Pa Bua Wan Restaurant. After breakfast, the morning sea of mist and beautiful natural scenery are awaiting to be savored on Phu Thok. Heading to the next destination at Tai Dam Cultural Center, Baan Na Pa Nat, you can observe remarkable designed fabric weaving, “Sin-Nang-Han”, learn how to make Tai Dam style souvenirs, and try local foods cooked by home-grown



vegetables. Following with riding on a farmer mini tractor to take a village tour, you can closely talk with Tai Dam people and learn their way of life. After that, you may travel to Kaeng Khut Khu to observe people's way of life along Mekong River, learn how to process sweet coconut snack, or take a tourist boat to enjoy natural scenery on both sides of the great Mekong River. After returning to Chiang Khan city center, relax yourself and visit Baan Supichaya Coffee Shop to have some cool drinks, waiting for the evening to go cycling around the community along Mekong River.





## **INTERESTING FACTS**

---

### **AMPHOE CHIANG KHAN**

The district, which is located on the bank of Mekong River, once has been the capital city of the former Lao people. Most of cultural arts nowadays are thus what inherited from Laotians in the past. The area is viewed in the eyes of travelers as the ancient city, which has been preserved its identity for more than 100 years. Although affected by modernity, Chiang Khan still has kept its peaceful and attractive way of life until present days.

---



🕒 15.00-16.15

**6** TOFFEE COFFEE  
BY BAAN SUPICHAYA



🕒 06.00-06.30

**1** STICKY RICE ALMS ROUND  
(TAK BAT KHAO NIEW)

**1**



🕒 16.30-17.30

**7** CYCLING ALONGSIDE MEKONG RIVER  
AND THROUGH THE VILLAGE

**7**

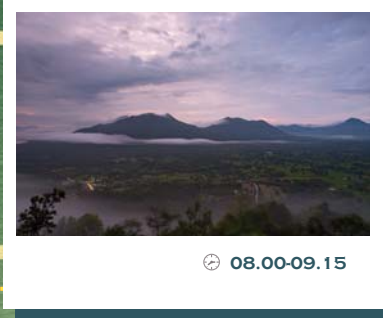


🕒 06.40-07.30

**2**

**2** NORTHEASTERN RICE NOODLE WITH  
SPICY SAUCE AT PA BUA WAN RESTAURANT





⌚ 08.00-09.15



PHU TOK

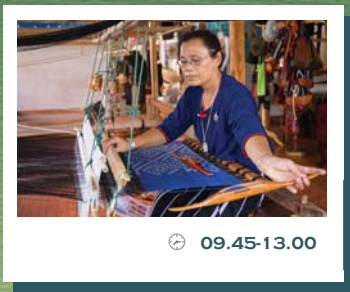
3



⌚ 13.30-14.30

5

KAENG KHUT KHU



⌚ 09.45-13.00

TAI DAM CULTURAL CENTER,  
BAAN NA PA NAT

4

# TRAVELING PLAN 2



## WHERE TO GO



### WAT PHON CHAI AND PHI TA KHON MUSEUM

- ✉ Moo 3 Baan Doen, Kaew Arsa Rd., Dan Sai District, Loei
- 🕒 Everyday, 08.00 - 17.00
- ☎ +6642891094

The ancient temple is the holy respectable temple of Amphoe Dan Sai for a long time. Phi Ta Khon Museum and Dan Sai Local Museum is situated in Wat Phon Chai. Phi Ta Khon Museum collects all relevant tales and Phi Ta Khon stories. Dan Sai Local Museum exhibits the history of inherited culture and traditions.

### KAENG KHUT KHU

- ✉ Baan Noi, Chiang Khan District, Loei
- 🕒 Everyday, 09.00 - 21.00
- ☎ TAT Loei Office +6642812812, +6642811405

Kaeng Khut Khu is a wonderful resort district for Chiang Khan people, including travelers who love to savour the beauty of nature. In the area, there are many restaurants, local products, and souvenirs which are ready to welcome visitors. Sweet coconut products, which are freshly made daily, are also available for purchase.





## WAT NERAMIT WIPATTASANA

- ✉ 20 Moo 14 Baan Huanayung, Dan Sai District, Loei
- 🕒 Everyday, 05.30 - 18.00
- ☎ +6642891226



Wat Neramit Wipattasana is the only temple made of red-colored laterite in Thailand. Large elegant ordination hall exquisitely was decorated

with Central Thailand regional arts. The principle Buddha statue is the replica of the highly venerated Phra Phuttha Chinnarat. A wax figure of the late founder Luang Pho Phra Maha Phan Sila Wisuttho is widely worshiped. Located near Phra That Si Song Rak. Many travelers who visit Dan Sai also visit the place. Especially, during the period of Phi Ta Khon Festival, the temple is full with numerous visitors.



## PHRA THAT SI SONG RAK

✉ 86 Moo 14 Baan Huanayung, Dan Sai District, Loei

🕒 Everyday, 07.00 - 17.00

☎ +6642891364

Phra That Si Song Rak is constructed as a witness of amity relationship between King Maha Chakkraphat of Ayutthaya and King Setthathirath of Lan Chang. In that era, Ayutthaya was invaded by Burmese Kingdom. Therefore, the two kings considered alliance for their collective security against the invasion of Burmese troops. They held the ritual taking the oath that they would never invade each other's territory and jointly constructed this sacred pagoda "Phra That Si Song Rak" as the witness of their amity promise and good relations between the two kingdoms.





## TAI DAM CULTURAL CENTER BAAN NA PA NAT



- ✉ 57/2 Moo 4 Baan Na Pa Nat, Khao Kaew Subdistrict, Chiang Khan District, Loei
- 🕒 Everyday, 09.00 - 21.00
- ☎ (Please contact in advance) +66860354738, +66818733895

The place is the oldest Tai Dam village in Thailand. Most Tai Dam have their royal bloodline. Travelers can appreciate local handmade weaving product or “Sin-Nang-Han”, which is very identical and beautiful. Travelers can learn to make their own Tai Dam style souvenirs, try traditional Tai Dam cuisine, take a village tour by the local mini tractor, and closely mingle with local people to learn about Tai Dam’s way of life.



## PHU THOK

- ✉ Street no. 211, Chiang Khan District, Loei
- 🕒 Everyday, 05.00 - 20.00
- ☎ +66973202553

The sea of mist in the morning is a phenomenon that anyone should not miss. The spectacular sightseeing spot is very popular. Visitors can see excellent views of the sea of mist, Mekong River scenery, Chiang Khan city, and Kaeng Khut Khu. Personal vehicles are not allowed to enter, thus public transports are provided at the Tourist Service Office at the rate of 25 Baht per person.





## WAT SRI KHUN MUEANG

- ✉ 375 Moo 1, Chaikhong Rd., Chiang Khan District, Loei
- 🕒 Everyday, 04.00 - 18.00

This temple is famous for gathering both Lanna and Lan Chang artistic works including many artifacts such as the Lan Chang style wooden Buddha statue. The statue's hair is in small pointed buttons and its ears are quite pointed and long. It is assumed to be built between B.E. 2400-2500. Moreover, there are pulpits sculpted and engraved by gold on all sides with castle-shape backrest. Moreover, the religious murals are depicted the Legend of Ten Incarnations of Lord Buddha.



## CHIANG KHAN WALKING STREET

- ✉ Chaikhong Rd., Chiang Khan District, Loei
- 🕒 Everyday, 17.00 - 22.00
- 📞 TAT Loei Office +6642812812, +6642811405

Lying across the riverside of Mekong River, the walking street attracts tourists with chilling air for strolling. With friendly local people, travelers comfortably walk to take beautiful photos and select handmade products such as clothes, bags, postcards, key rings, etc. Many restaurants serving local dishes and cafes welcome any travelers who want to have a good leisure time.



## TAI DAM HOUSE OF MUSEUM

- ✉ 170 Moo 4, Khao Kaew Subdistrict, Chiang Khan District, Loei
- 🕒 Everyday, 08.00 - 19.00
- ☎ +66849250771, +66833322828, +66862620189

This museum is aimed to well preserve the traditions and ancient Tai Dam intriguing culture. Travelers can find their conservative and traditional Tai Dam unique style wooden houses with

open area at the center of the houses. The interior is divided into separated rooms and allocated between family members. Moreover, there is a tradition of ‘throwing Ma - Gorn Ball (triangular-shaped ball made from fabric) into the ring’ as one of fortune-telling ways of local youths to foresee their future soulmates. Visitors who interested in learning can join the local weaving group, and purchase Tai Dam local clothes.





## THINGS TO DO

### **TAI DAM'S SOUVENIR MAKING AND LOCAL VEHICLE RIDING THROUGH THE VILLAGE**

- ✉ Moo 4 Baan Na Pa Nat, Khao Kaew Subdistrict,  
Chiang Khan District, Loei
- 🕒 Everyday, 09.00 - 21.00
- ☎ +66860354738, +66818733895

Tai Dam Cultural Village at Baan Na Pa Nat, Amphoe Chiang Khan, is fulfilled with interesting activity to teach visitors to make Tai Dam unique handicrafts. Previously, those things were used as tributes in the Saepang Ceremony to 'Phi Fa', which Tai Dam people believe to be supernatural entity who look after Tai Dam people. Travelers can also ride a local farmer mini tractor around the village to greet with villagers and experience Tai Dam's way of life.



## BAAN HUA NA YUNG LEARNING CENTER

✉ 82 Moo 14 Baan Huanayung, Dan Sai District, Loei

🕒 Everyday, 08.30 - 17.00

☎ +66854661653

This center is a collection venue of many artistic works, such as Phi Ta Khon Yai, Phi Ta Khon mask, and other Phi Ta Khon products made from natural materials. At the Center, Chang-Jook, Sorasak Charoensup awaits to welcome interested visitors. Travelers can learn and make their own Phi Ta Khon bamboo mask within 2 hours under Chang-Jook's close instruction.



## STICKY RICE ALMS ROUND (TAK BAT KHAO NIEW)



✉ Chaikhong Rd., Chiang Khan District, Loei

🕒 Everyday, 06.00 - 07.00

Sticky Rice Alms Round (Tak Bat Khao Niew) is a tradition which Chiang Khan people inherited for long time. In every morning around 06.00 - 06.30, the main street will be crowded by people who wait to offer sticky rice to Buddha monks for their meal. Some accommodations even prepare sticky rice set for travelers to experience the tradition.





## CYCLING IN CHIANG KHAN

- ✉ 375 Moo 2 Soi 14 Chaikhong Rd., Chiang Khan District, Loei
- 🕒 Everyday, 06.00 - 21.00

In the late afternoon when the sun begin to fade away, cycling around to relax and enjoy beautiful surroundings is thus a cool and enjoyable activity. Travelers can take a cycling alongside magnificent Mekong River to savour the beautiful sunset, before heading to Chaikhong Road, a famous walking street of Chiang Khan, and then Wat Sri Khun Mueang, an ancient temple influenced with Lanna and Lan Chang architectures. Bike rentals are available at many shops in Chiang Khan





## **SAILING TO OBSERVE MEKONG PEOPLE WAY OF LIFE AT KAENG KHUT KHU**

- ✉ Baan Noi, Chiang Khan District, Loei
- 🕒 Everyday, 09.00 - 18.00
- ☎ +66928853975, +66870787586

Kaeng Khut Khu is a wonderful resort district for Chiang Khan people, including travelers who love the beauty of nature. This place invites them to discover splendid and incredible scenery. In the area, many restaurants, local products, and souvenirs are ready to greet travelers. Tasty sweet coconut products, which are made daily, are also a must-try for all visitors.





## WHAT TO EAT

### JUM PA JAI SUKI

- ✉ Baan Doen, Dan Sai District, Loei
- 🕒 Monday - Friday, 07.30 - 15.00
- ☎ +66807470506

Traveling from Amphoe Dan Sai city center to Pa Jai restaurant takes about 7 minutes. Signature dish of the restaurant is Laotian-style Suki or Jum, which is delicious even without any seasoning, with pork meat and beef prepared by ancient inherited recipe and more than 20 years of experience. Tender pork and meat with crisp vegetable would be thus undeniably delicious. Roasted peanuts also emit really nice aroma all over the restaurant.





## NORTHEASTERN RICE NOODLE WITH SPICY SAUCE AT PA BUA WAN RESTAURANT

✉ 94/4 Moo 2 Soi 14, Sri Chiang Khan Rd.,  
Chiang Khan District, Loei

🕒 Everyday, 07.00 - 12.00 ☎ +6642821404, +66834189809

This local restaurant surrounded with relax atmosphere serves its signature dish of Northeastern rice noodle with spicy sauce in original Chiang Khan style ancient recipe. Before enjoying the meal, it is suggested that shrimp paste and lime juice should be added and mixed together to add little sour and salty taste with slightly savory aroma of shrimp paste. Pounded fresh chilli also can be added where spicier is needed.





## MAE KUM PAN – POR MANO RESTAURANT

- ✉ 128 Moo 4 Baan Nawha, Dan Sai District, Loei
- 🕒 Everyday, 08.00 - 22.00
- ☎ +66872178104

The restaurant serves an authentic Northeastern Thai cuisine, guaranteed by numerous awards, including the winner award of Thai Female Chef Competition. Especially, this restaurant uses “Sa-thorn vegetable juice”, made from Dan Sai’s local plant, as seasoning. Apart from common Northeastern food such as papaya salad, the restaurant also serves Tai Dan’s local dishes such as Miang Thun, Miang Khon, and Banana Blossom Salad.

## TOFFEE-COFFEE BY BAAN SUPICHAYA

- ✉ 183/1 Moo 2 Soi 14, Chaikhong Rd., Chiang Khan District, Loei
- 🕒 Everyday, 07.00 - 17.00
- ☎ +66856087557

Located on the Chiang Khan walking street, the café appears as a large wooden building whose front is an open space. The back of the café has a large wooden cloister close to the riverside which Mekong River can clearly be seen. The café serves fresh coffee, Thai tea, Italian sodas, and coffee's side-dish desserts such as brownie, banoffee, Hokkaido cheesecake, and cherry cheesecake.



## TAW NANG HAK KHAO PIAK NOODLE

- ✉ Between Soi 12-13 Sri Chiang Khan Rd., Chiang Khan District, Loei
- 🕒 Everyday, 06.00 - 13.00
- ☎ +66856584138

The restaurant is the first one in Chiang Khan that serves original recipe of Khao Piak Noodle. Apart from this signature dish, the restaurant has other famous recipes including Thai-style clear soup with congealed pork blood, Vietnamese grilled sticky rice with egg, and local pan-fried egg.





## WHERE TO STAY



### WITH A VIEW

- ✉ 185 Chaikhong Rd., Chiang Khan District, Loei
- ☎ +6642810696, +66910580185
- 📷 1200 - 3000 Baht
- 📍 [www.withaviewhotel.com](http://www.withaviewhotel.com)

The small hotel with 9 rooms was renovated from the 2-floor antique wooden building. Located on the bank of Mekong River and right on the walking street, the hotel was renovated to conserve the extraordinary architectural style of Chiang Khan together with adding modern retro-classic style of decoration. Facilities are completely provided in the accommodation in offering comfort to the visitors.





## BAAN TA KA YAI HOMESTAY

- ✉ 261/1 Moo 2 Chaikhong Rd., Chiang Khan District, Loei
- ☎ +6642822295, +66846045608
- 👁 600 - 800 Baht
- 📍 [www.baantakayai-chiangkhan.com](http://www.baantakayai-chiangkhan.com)

Located nearby Mekong River, the old wooden house just newly transformed can be guaranteed for its beauty and modernity. Comfortably facilities are provided within the en-suite accommodation such as, air-conditioner, water heater, and internet. The homestay also provides parking lots and canteen drinks without any additional charge.



## PHU NA COME RESORT

- ✉ 461 Moo 3 Baan Doen, Dan Sai District, Loei
- ☎ +66428920056
- 👁 4200 - 6500 Baht
- 📍 [www.phunacomeresort.com](http://www.phunacomeresort.com)

Local Northeastern Thai style accommodation, which is 2-floor en-suite house, greatly suites to the visitors who prefer privacy, silence, closeness to splendid nature, and locality of Northeastern Thai people. The visitor can also learn simple way of life in accordance to Philosophy of Sufficiency Economy.





## PHUPHANAM RESORT & SPA

✉ 252 Moo 1, Kokngam Subdistrict, Dan Sai District, Loei

☎ +66981325668, +66815543330, +66814077577

🏠 1800 - 4500 Baht

🌐 [www.phuphanam.com](http://www.phuphanam.com)

Surrounded by fertile natural landscape, the accommodation provides various activities to the visitor, such as cycling through orchid farm, deer farm, ostrich farm, bird garden, orange farm, and dragon fruit farm. Rental bicycles and canoes are also available.



## LOEI PAVILION RESORT HOTEL

- ✉ 111/1 Loei-Dan Sai Road, Kubpong Subdistrict,  
Mueang District, Loei
- ☎ +66898411181, +6642814442
- 💰 690 - 1300 Baht
- 📍 [www.loeipavilionresorthotel.com](http://www.loeipavilionresorthotel.com)

The place with warm-hearted and friendly atmosphere can make the visitors feel like staying with their relatives. The visitors can enjoy strolling and learn about organic farming. Hotel's Love-garden restaurant is always ready to serve. Karaoke room, conference room and coffee shop are also available for the guests.





## WHAT TO BUY

### PHI TA KHON SOUVENIRS, TA KHON SHOP

✉ 370 Moo 3, Dan Sai District, Loei

🕒 09.00 - 17.00

☎ +66811592801

The shop sells souvenirs relating to Phi Ta Khon, comprising of colorful masks and other Phi Ta Khon souvenirs which are made by local people and artists. Culture and tradition of Phi Ta Khon, which is local and exceptional, are assembled, invented, or mixed to create these products.



## MAE KUM PAN'S SA-THORN VEGETABLE JUICE AND SA-THORN VEGETABLE CHILLI PASTE

✉ 128 Moo 4, Baan Nawha, Dan Sai District, Loei

🕒 08.00 - 20.00

☎ +66872178104

Sa-thorn is a perennial plant which grows in the high mountain area. It is a bush plant that put forth leave-buds in February and has a slightly bitter taste. Local people like to ferment Sa-thorn leaf to make salty vegetable sauce and use the sauce to cook various kinds of food instead of Thai fish sauce. The sauce is thus very unique ingredient of Dan Sai area.



## KIENG LOEI SWEET YOUNG COCONUT

✉ 40/14 Moo 4 Baan Noi, Chiang Khan District, Loei

🕒 07.00 - 17.00

☎ +66818712054

There are several types of Kaeng Khut Khu's sweet coconut snack. While some are made from same-size-shredded aged coconuts, which would taste sweet and creamy but not crispy, some may be made from young coconuts. Such young coconuts are graded depending on softness level of the processed coconuts. These young sweet coconuts would taste soft, fragrant, sweet and creamy, and result in irresistibly delicious flavor.





## 100% COTTON PILLOW AND BLANKET, NIYOM THAI STORE

✉ 167 Moo 2, Chaikhong Rd., Chiang Khan District, Loei

🕒 09.00 - 17.00

☎ +6642821246, +66933801325

Cotton blanket is Chiang Khan's local wisdom inherited from their ancestors. It is nowadays a famous product of Chiang Khan. Apart from blanket, cotton pillow, bolster, cushion, and seat cushion are also available for travelers to take home.





สุภาพนศิลป์  
**เชียงใหม่**  
นำเที่ยวเชียงใหม่  
ทะเลหมอกทุกสัปดาห์-เที่ยงคืน  
โทร.083-3557009

โรงเรียน

# GETTING THERE

---



## BUS

---

Many air-conditioned coaches of The Transport Co., Ltd and other private companies are available for the routes of Bangkok - Loei and Bangkok - Chiang Khan. They normally depart from the Northern Bus Terminal (Mo Chit 2), which is located at Kampaeng Phet 2 Road, for many trips per day. Each journey takes approximately 8 hours. For more information, please contact :  
The Transport Co., Ltd  
Tel. 1490 or [www.transport.co.th](http://www.transport.co.th)



## CAR

---

There are several routes to drive to Loei

- Use Highway No. 1 (Phahonyothin) through Saraburi Province then take Highway No. 21 across Phetchabun Province until reach Amphoe Lom Sak, following with Highway No. 203 through Amphoe Lom Kao, Amphoe Phu Ruea, and head into Loei Province.
- Use Highway No. 1 (Phahonyothin) to reach Saraburi Province then take Highway No. 2 (Mittraphap) across Nakhon Ratchasima until reach Khon Kaen Province, turn left into Highway No. 12 through Amphoe Chum Phae, then turn right through Amphoe Phu Kradueng, Amphoe Nong Hin, Amphoe Wang Saphung, and enter Loei Province.
- Use Highway No. 1 (Phaholyothin) to reach Saraburi Province then take Highway No.2 (Mittraphap) until reach Amphoe Sikhiu, turning left into Highway No. 201 across Amphoe Dan Khun Thot, Amphoe Chatturat, Chaiyaphum Province, Amphoe Kaeng Khro, Amphoe Phu Khiao, Amphoe Chum Phae, Amphoe Phu Kradueng, Amphoe Nong Hin, Amphoe Wang Saphung, and reaching Loei Province.



# GETTING THERE

---



## TRAIN

---

Loei Province has no train station, but travelers can take a train from Bangkok Train Station to Udon Thani Train Station and then use a coach to Loei Province. For more information, please contact Travelling Service Agency, the State Railway of Thailand Tel. 1690 or [www.railway.co.th](http://www.railway.co.th), or Udon Thani Train Station Tel. +6642222061



## PLANE

---

2 airlines provides direct flight from Bangkok to Loei everyday.

- Airasia, tel. +6625159999 or [www.airasia.com](http://www.airasia.com)
- Nok Air, tel. 1318 or [www.nokair.com](http://www.nokair.com)



# TRAVELING IN LOEI

---

Loei Province provides various kinds of transportation to visitors. Travelers can choose mode of transportation which suits their preference.



## THE MINIBUS

---

There are many minibus routes between the terminal and several location in the city. Travelers may hire the minibus for their trip in urban or district area at daily basis for around 1000 – 2000 Baht depending on negotiation and distance.



## SKYLAB (MOTOR-TRICYCLE) AND MOTORCYCLE TAXIS

---

Service stations of Skylab and motorcycle taxis are available at various locations in the Province. Service fee can be agreed according to distance or at lump-sum rate.

### LOCAL SKYLAB CONTACT INFORMATION

---

#### **Amphoe Dan Sai**

Dan Sai Tricycle Club

Contact : +66821042484

#### **Amphoe Chiang Khan**

Skylab Group of Chiang Khan

- Service center at Chiang Khan Municipal Market



# USEFUL TELEPHONE NUMBERS

---

## FOR TOURISTS

### EMERGENCY CALLS

Emergency Police Service	911
Police Fire Brigades	199
Tourist Police	1155, 0 2281 5051
Tourist Service Centre	1672
Police General Hospital (BKK)	0 2207 6000
Highway Police	1193, 0 2354 6007
Ambulance and Rescue (BKK)	1554
Bangkok Metropolitan Administration	1555
Medical Emergency Call	1669
Crime Suppression Division	1195

### INFORMATION SERVICE

Immigration Department	0 2287 3101
Telephone Directory Service	1133
Weather & Climate	0 2399 4566

### TOURISM AUTHORITY OF THAILAND (TAT)

Tourist Information (TAT Head Office)	0 2535 2669
- TAT Krabi	0 7562 2163,
	0 7561 2811 to 2
- TAT Bangkok	0 2250 5500
	# 2991 to 5
- TAT Loei	0 4281 2812
Tourist Information (TAT Airport Office)	0 2256-7326 to 7
Lampang Tourist Centre	0 5422 6919

## TRANSPORTATION & AIRPORT

Flight Schedules	1566
Suvarnabhumi Airport (BKK)	1722
Don Mueang International Airport (DMK)	0 2535 1111
Bangkok International Airport Timetable (Hotline)	1690, 0 2223 7010
Krabi International Airport (KBV)	0 7563 6541
Lampang Airport (LPT)	0 5482 1505
Loei Airport (LOE)	0 4281 1520
Chao Phraya Express Boat	0 2449 3000 to 2
Northern Bus Terminal	0 2936 2841
Eastern Bus Terminal (Ekkamai)	0 2391 2504
Southern Bus Terminal (Pingklao-Nakorn Chaisiri)	0 2434 7192
Northeastern Bus Terminal	0 2936 3660
BTS Skytrain Call Center	0 2612 2444
MRT Subway Call Center	0 2354 2000
BRT Call Center	0 2643 8855
Airport Rail Link	0 2308 5600
Bangkok Railway Station (Hua Lamphong)	0 2223 7010/7020/7461

DISCOVER AMAZING STORIES IN



[www.tourismthailand.org/tourismproduct](http://www.tourismthailand.org/tourismproduct)



Amazing Thailand



@ThailandFanClub



Amazing Thailand