

Me & myself THAILAND

SOLO TRAVEL IN THAILAND



Me
&myself
&THAILAND

CONTENTS



SECTION 01:



04 DESTINATION GUIDES

Quick Facts, 5 Unique Landmarks to visit, To Stay, To See, To Do, To Buy, To Eat, How to get there? Best time to go, Suggested Itinerary

-
- 06 BANGKOK
 - 38 CHIANG MAI
 - 72 KANCHANABURI
 - 104 NAN
 - 136 NONG KHAI
 - 172 PHUKET
-



SECTION 02:



202 UNIQUE EXPERIENCES

-
- 204 CONQUERING MOUNTAINS
 - 206 SEARCHING FOR MY SOUL
 - 208 LIVE LIKE A LOCAL
 - 212 RECHARGE
 - 214 MAKE A DIFFERENCE
-



SECTION 03:



216 LET'S SPEAK SOME THAI

-
- 218 DAILY THAI CONVERSATIONS
 - 219 EASY WORDS
-



SECTION 04:



220 DO'S AND DON'TS IN THAILAND

-
- 222 THAILAND: DO'S
 - 223 THAILAND: DON'TS
-



SECTION 01

Destination GUIDES

Bangkok, Chiang Mai, Kanchanaburi, Nan,
Nong Khai and Phuket



DESTINATION GUIDE

Bangkok

*Quick Facts, 5 Unique Landmarks to visit, To Stay,
To See, To Do, To Buy, To Eat, How to get there?
Best time to go, Suggested Itinerary*





Phra Sumen Fort

Democracy Monument

Bangkok National Museum

Rattanakosin exhibition hall

Tha Maharaj

Sanam Luang

Contemporary Art Gallery

Loha Prasat

Temple of the Golden Mount Bangkok

The Grand Palace

Giant Swing

Wat Suthat Thepwaram

Wat Pho

Saranrom Park

Rommaninat Park

Wat Arun



SECTION 01

BANGKOK

QUICK FACTS

Bangkok is one of the busiest and most-visited cities in the world. The Thai capital is home to some eight million people and welcomes tens-of-millions of tourists each year.

Once known as “Venice of the East” thanks to its maze of canals that cut through the urban landscape, it’s still possible to get around on the water today - a great way to see some of the temples that helped it gain another nickname, “Temple City” (which is easy to see why). In addition, Bangkok is not the actual name of the capital - its real name in Thai is “Krung Thep”, which is short for (and take a deep breath for this)...

"Krung Thep Mahanakhon Amon Ratanakosin Mahinthara Ayutthaya Mahadilok Phop Noppharat Ratchathani Burirom Udomratchaniwet Mahasathan Amon Piman Awatan Sathit Sakkathattiya Witsanukam Prasit"

- the longest name for a city in the entire world!





SECTION 01

BANGKOK

5 UNIQUE LANDMARKS TO VISIT

01

EmQuartier

In addition to having one of the widest selections of stores, EmQuartier has a stunning indoor waterfall flowing at its core which stands 40 meters tall. Check out the 3,000-square-meter garden or do some shopping!
www.emquartier.co.th



02

Lhong 1919

Once a thriving Sino-Portuguese port area, the recently developed Lhong 1919 has seen its collection of old riverside warehouses reclaimed and transformed into boutique shops, galleries, cafes and restaurants. The result? One of Bangkok's coolest new riverside attractions!
www.lhong1919.com

03

King Power MahaNakhon

Rise to the peak of Bangkok with the help of King Power MahaNakhon. Test your bravery on the Glass Tray Experience or simply enjoy the 360-degree view from Thailand's highest observation deck (314 meters).
www.kingpowermahanakhon.co.th



05

Silpa Bhirasri National Museum

Honor the Father of Thai Modern Art at the Silpa Bhirasri National Museum - Corrado Feroci. Some of the art dates back to the late 1920s when Feroci began teaching sculpture to students in Thailand. Admission is free!
www.bangkok101.com/silpa-bhirasri-memorial-museum

04

King Prajadhipok Museum

The King Prajadhipok Museum was made to commemorate King Prajadhipok (King Rama VII). It features old photographs and memoirs of Thailand's last absolute monarch.
www.kingprajadhipokmuseum.com





TO STAY

RECOMMENDED NEWLY OPENED HOTELS



Craftsman Hotel

Craftsman Hotel is the epitome of chic. From the glistening pool that sits at its core to the stylish rooms with modern interiors, this is the place to stay and sleep in Sukhumvit.

www.craftsmanbangkok.com

Nanda Heritage Hotel

The unique architecture of the family-owned Nanda Heritage Hotel might first catch your eye, but it's the friendly staff that will have you extending your stay! A small yet refreshing pool is nestled between the wooden architecture that was actually salvaged from the family's 1920s European-style teak wood home.

www.nandaheritage.com

Waldorf Astoria Bangkok

This prestigious hotel chain certainly doesn't disappoint in its Bangkok location. Get ready for luxury as this hotel has easy access to the BTS Skytrain, three on-site restaurants, a spa, a temperature-controlled pool with private cabanas, and so much more at Waldorf Astoria Bangkok.

www.hilton.com

RECOMMENDED BUDGET HOTELS

Blok Thonglor

Blok Thonglor is a so-called "poshtel" located down a quiet street in an thriving area of Thonglor. There are five different accommodation types coupled with trendy furnishings decked out in London-inspired decor.

www.facebook.com/bloklthonglor

Theatre Residence

Theatre Residence Bangkok is a stylish riverside accommodation boasting a prime location ideal for exploring the city. It is also equipped with a sauna, hairdresser, a rooftop lounging area, and more. In 1992, this hotel was the capital's first open-air theatre.

www.theatreresidence.com



Interior view of the Theatre Residence, the first open-air theatre in Thailand.

RECOMMENDED HOSTELS

ISSARA by D Hostel

ISSARA by D Hostel sits at the core of Bangkok's Old City. From its rooftop, you can see temples sprinkled around the vicinity. This budget-friendly hostel offers free breakfast, clean and stylish amenities, and even free rooftop yoga!

www.issarahostel.com

Mad Monkey Bangkok

Voted by Hostelworld as the most popular hostel in Bangkok in 2019, Mad Monkey Bangkok is the top place to find a social atmosphere as a solo traveler in the City of Angels. With the perfect balance between party and adventure, you'll feel right at home at this budget hostel.

www.madmonkeyhostels.com

Weeping Willow

Set slightly away from the frantic Sukhumvit Road down the quieter Soi 26, Weeping Willow provides basic, compact, but very budget-friendly rooms. Ideal for travelers wanting to stay in the heart of Bangkok, the accommodation promises comfy beds with a range of on-site facilities.

www.facebook.com/weepingwillowbangkok

TALES Khaosan (Cafe & Hostel)

Get ready to make friends at TALES Khaosan (Cafe & Hostel). You can eat, drink, and sleep at this affordable accommodation option, found close to Bangkok's craziest backpacker road. There are two pod-like dorms and one private room available. It also boasts of a co-working space.

www.taleskhaosan.com



First: ISSARA by D Hotel, the hotel that is located in the core of Bangkok's Old City
Second: Mad Monkey Bangkok, the perfect balance between party and adventures.

RECOMMENDED HOMESTAYS

Loogchoob

Feel right at home at Loogchoob, a unique homestay in the heart of Bangkok. Its spacious rooftop makes it easy to meet other guests. It is also right down the road from Nang Loeng Market, home to one of the oldest early-morning food courts in the city.

www.loogchoob.com





TO SEE

📍 CULTURAL ATTRACTIONS

01 Queen Sirikit Museum of Textiles

Located adjacent to the grounds of the Royal Palace is the Queen Sirikit Museum of Textiles. When you pay to enter the Grand Palace, you also get free admission into this museum, so it's a good idea to do both!

www.qsmthailand.org



© timeout.com

02 Mazu Shrine

The Mazu Shrine sits in Lhong 1919, a 19th-century Chinese mansion that has just been restored to its former glory. It honors the Chinese goddess of seafarers.

www.lhong1919.com



© steemkr.com

03 Baan Kudichin Museum

The Baan Kudichin Museum is filled with Portuguese-influenced artifacts and information. You will learn more about the language, religion, food, and culture of those who descend from Siam-Portuguese lineage! There is also an on-site cafe.

www.baankudichinmuseum.com

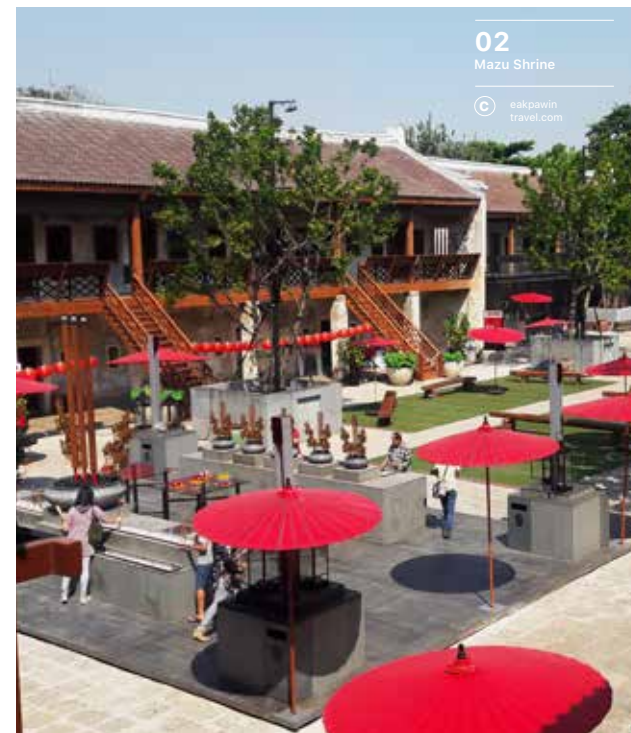


© thaibis.com



01 Queen Sirikit Museum of Textiles

© qsmthailand



02 Mazu Shrine

© eakpawin travel.com



03 Baan Kudichin Museum

© steemkr.com



05 Bangkokian Museum

This two-story, endearing museum takes visitors back in time with its historic relics, with folk-like finds placed throughout the wooden home.

Tel: 0-2233-7027



04 Wat Yannawa

Otherwise known as the Boat Temple, is one of Bangkok's most unique religious structures. It is shaped like a Chinese-style vessel and is located along the Chao Phraya River. Built during the 19th century, this is a must-visit temple in the capital for anyone looking to go off the usual temple track!

www.bangkokriver.com/place/wat-yannawa

06 Coin Museum

The Coin Museum showcases Thai currency throughout the years. It even houses a 4D exhibition, and there are also audio guides available for those visitors who want to learn more about Thailand's currency.

www.coinmuseum.treasury.go.th



07 ASEAN Cultural Center

The ASEAN Cultural Center is regarded as one of the best museums in Bangkok. It opened in 2015 and took about 15 million baht to construct. It is over 600 acres in size and filled with artifacts, Thai exhibitions, and much more.

www.museumthailand.com/en/museum/ASEAN-Cultural-Center



08 Wat Pho Maen Khunaram

One of Bangkok's most stunning Chinese temples is Wat Pho Maen Khunaram. It was built in 1959 and is estimated that it took over 30 million baht to construct!

www.touristbangkok.com/wat-poe-man-khunaram



09 Wat Ratchanadda

Also known as the Metal Castle, Wat Ratchanadda is made of 37 black metal spires that symbolize the 37 virtues one must have to reach enlightenment — another tribute to the importance of Buddhism in Thai culture.

www.renown-travel.com/temples/wat-ratchanadda.html



10 Pipit Banglamphu Museum

The Pipit Banglamphu Museum is located in one of the oldest neighborhoods in Bangkok. The museum was actually once an old printing plant before being turned into the treasure trove of memories that it is today. It also acts as a green space.

banglamphumuseum.treasury.go.th

01

Bang Kachao

Escape the chaos of the capital on Bang Kachao, otherwise known as Bangkok's Green Lung. Technically located in the province of Samut Prakarn (but just a 5-minute boat ride away from the central area), this island is one of the best places to cycle in the city and is also home to the Bang Nam Phueng Floating Marketing.

www.bangkokriver.com/th/place/bang-kachao



02

Benjakiti Park

With Bangkok's skyscrapers acting as an impressive concrete, glass-clad backdrop, Benjakiti Park is best known for its large lake (200 meters wide and 800 meters in length) that sees locals and expats walk, run and cycle around as evening falls. It was given its name 'Benjakiti' in celebration of H.M. Queen Sirikit's 60th birthday anniversary and was officially opened on December 9, 2004.

www.bangkok.com/magazine/benjakiti-park.htm



03

Lumpini Park

As one of the oldest and largest parks in the city, visitors looking to peace and quiet while surrounded by greenery must add Lumpini Park to their itinerary. A large lake offers the chance for some paddle-boat action while you'll also find many locals congregating here at sunset for a warm session of dance aerobics.

www.tourismthailand.org/Attraction/Lumpini-Park--108



04 King Rama IX Park

Spanning some 200 acres of land, King Rama IX Park is one of the largest green spaces in Bangkok. It was established in 1987 and remains one of the top spots to escape the capital's urban decor.

www.taketour.com/article/king-rama-ix-park



05

Queen Sirikit Park

While only established in 1992, Queen Sirikit Park remains a favorite green space among locals and tourists alike. Over 2,000 species of plants reside here, and it is renowned as one of the top botanical gardens in Bangkok.

www.tourismthailand.org/Attraction/Queen-Sirikit-Park--107

01 Bangkok Art and Culture Centre

Exhibitions, music performances, art libraries: the Bangkok Art and Culture Centre seemingly has it all. Stop by to soak up the incredible architecture, sip on specialty coffee, or admire the art. www.bacc.or.th



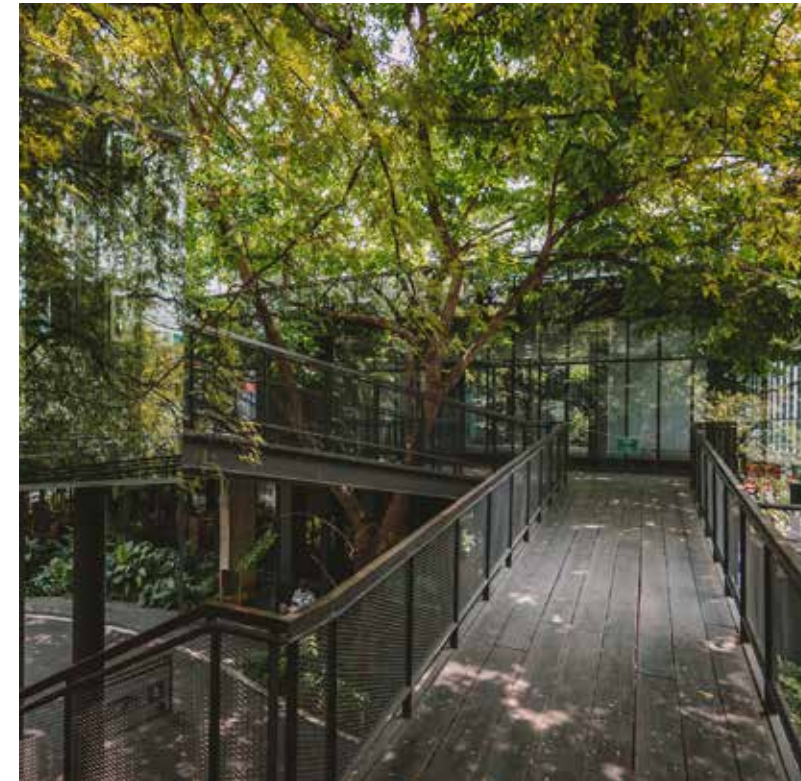
02 Teddy Castle

Teddy Castle is a roadside castle located in Thonglor. Its wooden drawbridge leads visitors into a teddy bear world of wonder. The entire cafe is filled with stuffed animals, as well as trinkets for sale.

www.teddyhouse.com

03 72 Courtyard

Karaoke, a nightclub (Beam), a craft beer hall: 72 Courtyard is the place for all the young and trendy looking for a place to chill or party at night in Bangkok. There is no shortage of spots in this open-plan venue. Come here for a delicious meal or an epic night out in Bangkok. www.72courtyard.com



04 Naiipa Art Complex

Naiipa Art complex is a hodge-podge space made up of restaurants, a cafe, a co-working space, a spa, and more. Visitors will feel as though they've left the chaotic capital behind them as they enter the complex that is almost entirely shaded by bright green foliage.

www.naiipa.com



05 theCOMMONS

Another huge draw for visitors to the Old Town area is its vibrant art scene. A 2016 initiative saw some of Thailand's most talented artists cover dozens of walls in colorful murals using paint and graffiti – making for some eye-catching Instagram shots.

www.thecommonsbkk.com



01 Yelo House

If you are artistic, Yelo House is one space you cannot miss out on visiting. As its name subtly suggests, this downtown creative space's interior is adorned almost all in yellow. The former warehouse-turned-art-space is some 480-square-meters and consists of a gallery hall, tattoo parlor, cafe next to the canal, and more.

www.yelohouse.com



02 Chalerm La Park

Chalerm La Park is unlike any park you've ever seen before in Thailand. It is an urban space right off the Skytrain at Ratchathewi decked out in graffiti along with a basketball court and small playground. Come here often enough, and you'll notice the artwork being constantly updated!

www.mythailandphotos.com/bangkoks-graffiti-park-chalerm-la-park



SECTION 01

BANGKOK

TO DO

WORKSHOPS / ACTIVITIES

Bangkok Soap Opera

Bangkok Soap Opera is a quaint shop overflowing with handmade serums, soaps, lotions, and more. All of their products are made in the adjacent workshop.

www.soapoperabkk.com

Cinema Oasis

See a cinema like never before at Cinema Oasis. This independent art theater doubles as a gallery and aims to promote the creative freedom of expression of Thai people to show the world.

www.cinemaoasis.com

Craffteteria

Craffteteria is a craft space where you can create everything from makeup to flower crowns to DIY earrings and more. Choose your favorite art supplies and items, with the friendly staff here ready to help you create your own work of art. Make something for yourself or create a unique, one-of-a-kind gift for your friends and family!

www.craffteteria.com

VR1

Escape Bangkok, if only for a game, at VR1. This is the place to experience virtual reality in the capital. Choose from over 160 games with food and beverages to boot.

www.vr1bkk.com

Urban Playground Climbing Gym

Bangkok is often referred to as an urban playground — but Urban Playground Climbing Gym takes this idea to a whole new level. This indoor rock climbing wall facility has many different routes ideal for both beginners and experienced climbers.

www.urbanplaygroundclimbing.com

RELAXING



viehotelbangkok.com

VIE Spa

East meets west at the luxurious VIE Spa. Discover deep relaxation with one of their luxurious spa treatments right beside the Chao Phraya River.

www.viehotelbangkok.com

The Oasis Spa Bangkok

The Oasis Spa Bangkok is the perfect place to unwind in the city. This Bohemian-style day spa has affordable spa treatments accompanied with its 'secret garden' vibe. Book into one of their 12 treatment rooms and enjoy the outdoor sharings and soaking baths.

www.oasisspa.net

Wild Clinic and Organic Treat

Rejuvenate your skin at Wild Clinic and Organic Treat. They offer facial Pilates, pore detoxifying treatments, lip contouring, and other beauty services that will have you immediately feeling fresh.

www.wildskinbkk.com

LIKE A LOCAL

Baan Bart Community Village

The Baan Bart Community Village is the last hand-made alms bowl community of the city. It is more than 200 years old and all of the bowls made here are done following the Buddhist disciplinary rules. There is a magical yet loud ringing that echoes throughout the slender streets of this historic village. You are welcome to weave through them and watch the locals hard at work, pounding away on their steel alms bowls.

www.onceagainhostel.com/baanbart.html

**Talad Noi**

Some things get better with age, and a perfect example of this is the neighborhood of Talad Noi. Meander Bangkok's undiscovered streets of Talad Noi. The Sieng Kong Zone has the largest selection of used car parts, Trok San Chao Rong Kueak alley is decked out in graffiti, and U Phai Rat Bamrung temple is a great example of Vietnamese architecture blended in with Thai surroundings.

www.alifewithoutborders.org/talad-noi-bangkok-walk

First: Baan Bart Community Village
Second: Talad Noi



INTERESTING WALKS



TROVER.com

Bang Nam Phueng Floating Village

This canal-side market is set away from the city but still worth a visit. Found on the 'Green Lung of Bangkok,' otherwise known as Bang Kachao, it's best to head here on the weekend, to find vendors selling Thai favorites, especially authentic sweet desserts!

www.bangkok.com/magazine/bang-nam-pheung.htm

Charoen Krung

Explore the action-packed Charoen Krung on foot, one of the oldest roads in Bangkok. It runs alongside the Chao Phraya River and is adorned with a Chinese shrine, street art, and the renowned Bang Rak Market.

www.livingasean.com/explore/day-trip-charoen-krung



Bang Nam Phueng Floating Village, the canal-side market that is found at Bang Kachao.



TO BUY

RETAIL

Co-incidence

Phone cases, canvas bags, clothing items: Co-incidence has it all. This lifestyle store features an array of quirky items that shine with graphic design expertise. Do note that it's only open on the weekends.

www.facebook.com/coincidence.bangkok

Happening Shop

Happening Shop is found in the Bangkok Art and Culture Centre, so you know artistic finds are plentiful here. Get ready to browse records from indie artists and hand-selected novels. In addition, this creative store hosts different events, including artistic workshops, book tours, and more.

www.happeningandfriends.com

Tost and Found

Tost and Found brings all things with style together in one quirky space. The shop displays work by Thai designers with everything from clothing to furniture available. There is also an on-site cafe.

www.timeout.com/bangkok/shopping/tost-found

Something About Us

Something About Us is a contemporary lifestyle store featuring modern fashion items and distinctive accessories. The quaint space is filled with memorable finds - perfect for updating your wardrobe at home.

www.facebook.com/shopsaubkk



CRAFT



PAYA Thai Handicraft Furniture & Accessories

The handcrafted items found at PAYA Thai Handicraft Furniture & Accessories are sourced from village artisans all over the country. You won't find furnishings much more unique than those found here, and the large store has plenty of rooms to meander through before selecting your final purchase.

www.payashop.net

Maison Craft

Discover artisan craftwork at Maison Craft. This shop celebrates the skills used back in the day in an otherwise modern-day Bangkok. Everything is handmade with natural items found in the country.

www.maisoncraft.com

SOUVENIRS

Angoon Garden

This weekend charity market and coffee shop duo features offers delicious Thai snacks, handmade jewelry, shawls, and more. Donations are given to The Mirror Foundation.

www.bkkkids.com/listing/root-garden-angoon-park-thonglor

BKK Original

BKK Original is a serious hotspot for those who love shopping. It is located in Terminal 21, an innovative mall decked out to resemble an international airport. Find the newest fashion designs at this shop, including scarves, wallets, and more.

www.bkkoriginal.com



First: Angoon Garden, the weekend charity market and coffee shop.
Second: BKK Original, A serious spot for those who love shopping.

LOCAL MARKET



Lat Mayom Floating Market

Find items at the Lat Mayom Floating Market that you wouldn't find anywhere else. If you want to visit a floating market in Bangkok, this is one of the closest ones to the city center. It sits next to the canal and boasts of delicious local dishes, Thai handicrafts, fruits, and home decor.

www.bangkok.com/magazine/khlong-lat-mayom.htm

Siam Gypsy Junction

Travel back in time at Siam Gypsy Junction. This market (under the MRT Bang Son station) offers plenty of exciting finds that will have your inner shopaholic's heart skipping a beat! Be on the lookout for vintage finds, novelty clothing items, unique barber shops, and even live bands in the evenings.

www.maptrrotting.com/siam-gypsy-junction-market-bangkok



TO EAT

STREET FOOD



Si Morakot

Venture into the heart of Bangkok's Chinatown and treat your taste buds to Si Morakot, a street food stall that doesn't even have English signage! Despite that, its name still remains one of the most prominent in the city for Thai-Chinese fusion dishes.

Tel: 08-1567-9006

Osha Suki

Street food doesn't get much better than those at Osha Suki. As its name suggests, the starring ingredient in many of the dishes here is chicken, with menu items starting off at as little as \$1.40.

Tel: 08-3912-5095

Paglee

Paglee is one of Bangkok's most legendary street food venues. It serves up traditional Thai desserts that are sure to make your sweet tooth buds sing! Open for more than 30 years now, expect all of the delicious, authentic desserts here to stay true to the shop's original family recipes.

Tel: 0-2668-6501

FINE DINING

Cuisine de Garden BKK

Cuisine de Garden, as its name suggests, serves nature-inspired cuisine made from local ingredients. All of the contemporary dishes here have their own culinary twist to them, and its interior has a strong emphasis on modern design.

www.cuisinedegarden.com

OSHA

OSHA began as a chain in San Francisco before becoming the award-winning restaurant it is today in Bangkok. This fine-dining venue features stunning decor and serves up delicious Thai favorites, each with a modern twist.

www.oshabangkok.com



HEALTHY

Patom Organic Living

Farm to plate doesn't get more authentic than at Patom Organic Living. All of the ingredients here are sourced from honest and responsible farmers who create organic products. The venue is open, airy, and just feels so much more than a restaurant: it is a movement.

www.patom.com



CLUBS/BARS



PENTA

Bangkok's biggest hip hop crew, Bangkok Invaders, have recently opened up PENTA, located right in the heart of the city's upscale nightlife scene on Soi Ekkamai. The club goes heavy on the neon lights and sound system, welcoming international DJs alongside well-known local names.

www.pentabkk.com

Beam

Bangkok is a city that never sleeps - and Beam Club is one of the places keeping visitors up. Beam welcomes different DJs four or five nights a week, with an emphasis on techno, house and other underground sounds.

www.beamclub.com

Tep Bar

Head to Chinatown to dine on some delicious traditional Thai food at Tep Bar. Also known as the "Cultural Bar of Thailand", this bar and restaurant is famous for its 'Ya Dong,' (or fermented "medicine" made from rice). It is used in most of the cocktails here and is best enjoyed with one of their Thai-style tapas dishes.

Tel: 09-8467-2944

www.facebook.com/TEPBARBKK



CAFES



The Blooming Gallery

Happiness blooms like flowers at The Blooming Gallery. This tea bar and cafe encompasses a greenhouse vibe with hanging flowers throughout. It's both sweet and rustic and a great place to indulge in a meal adorned with edible flowers.

www.timeout.com/bangkok/restaurants/the-blooming-gallery

Heijii Bangkok

Heijii Bangkok is particularly Instagram-ready cafe serving up your favorite caffeinated beverages. Sit in one of the old school desks and admire the Chinese writing that adorns the concrete interior while you fuel up with drinks, including their iced white. Baked goods are also available.

bk.asia-city.com/restaurants/bangkok-restaurant-reviews/heijii

Session Beauty Bar & Cafe

Get beautified while you chow down at Session Beauty Bar & Cafe. In addition to refreshing drinks, visitors can also frequent to get pedicures, manicures, eyelash extensions, or get their hair done.

Tel: 06-1645-9514

www.facebook.com/sessionbeautycafe

VEGETARIAN

May Veggie Home

May Veggie Home is a 100-percent vegan restaurant boasting of some of the best local Thai dishes, just with no meat. It's affordable, centrally located, and downright delicious.

www.mayveggiehome.com



Veganerie Concept

Veganerie Concept has one of the most extensive faux meat menus and is one of the most popular in the capital, and animal-product free diners must add this to their foodie adventures of Bangkok.

www.veganerie.co.th



SECTION 01

BANGKOK

HOW TO GET THERE?

BY BUS



There are three major bus stations in Bangkok: Mochit Bus Terminal (Northern Bus Terminal), Ekkamai Bus Terminal (Eastern Bus Terminal) and Southern Bus Terminal.

For long or international destinations, you will likely be arriving at Mochit Bus Terminal, which is conveniently connected to Mochit BTS Skytrain station. From here, you can go to some of the top destinations in the city.

BY TRAIN



Hua Lamphong Railway Station is the main train station in the city.

It connects to the MRT Underground, which is extremely convenient for solo travelers with loads of luggage. You can take the train from countries, including Cambodia, Malaysia, Laos, and Myanmar to get to Bangkok as well as many Thai cities. The brand-new, much larger Central Train Station is set to open at Bang Sue around 2021.

BY PLANE



Bangkok has two major airports: the Suvarnabhumi Airport and Don Mueang International Airport. If you are traveling domestically, you will likely fly into Don Mueang (although not all flights land here).

If you are flying internationally, especially from outside of Southeast Asia, you will likely arrive at Suvarnabhumi Airport.

GETTING AROUND

Part of the fun of exploring Bangkok is how you get around – with so many options to choose from. For example:

Tuk-tuks (mobile kart)

Can be exciting, especially when zipping around the Old Town area, but do remember to agree to a price beforehand.

Canal boats

A good way of seeing an alternative side to the city, but routes are limited.

BTS Skytrain and MRT

Perhaps the easiest and quickest way to travel long distances, with an extensive network of above and underground tracks connecting the city.

Taxis/Grab Taxi

Cheap and convenient, it's normally easy to flag down a taxi or book a licensed car through the Grab App. That said, you don't want to get stuck in the city's notorious traffic during rush hour, so planning ahead using a traffic-reading app like Google Maps can make a big difference.



BEST TIME TO GO

Thailand has a total of three seasons.

The best time to visit Thailand is during the high season. This lasts from November to February. It is also known as the cool season.

The next best time is during the hot season, which is from March to May. These months are best spent down south so that you can enjoy and cool off along Thailand's beautiful coastlines.

The monsoon season, or the rainy season, is from June to October. It represents new beginnings. Rice will be planted and fields will turn green. The weather is cool and refreshing. In the north, rain clouds and mists can be seen rolling. You should also be sure to check out some of the major holidays in Thailand and try to visit during those times, including Chinese New Year (February), Songkran, or the Water Festival (April), Loy Krathong (October), and the Vegetarian Festival (October).



SECTION 01

BANGKOK

SUGGESTED ITINERARY

DAY 01

MORNING

Check into Craftsman Hotel, a modern accommodation option just a short walk from Ari BTS Skytrain station.

Then, venture to Chalerm La Park, an outdoor, graffiti-filled space that is great for photographers a few stops south at Ratchathewi. Grab breakfast and tea at The Blooming Garden after exploring the park.



AFTERNOON

Do some shopping and check out the huge indoor waterfall at EmQuartier, one of the most impressive malls in Bangkok. Afterward, venture to the nearby Benjakiti Park, a large green space that's home to a 200-meter wide and 800-meter long pond equipped with trails for walking and cycling.

Later, have lunch at May Veggie Home, a 100-percent vegan dining venue right off the BTS Skytrain station at Asok.



DINNER

End your first day with dinner at 72 Courtyard, an architectural wonder found in Sukhumvit. There are plenty of dining venues to choose from featuring Japanese cuisine, Thai favorites, burgers and more.

Later, head upstairs to Beam, a nightclub with DJs across two floors (normally Wednesday to Sunday).

DAY 02



MORNING

Kick-start your day with breakfast at Patom Organic Living.

Later, try your hands at rock climbing at Urban Playground Climbing Gym.

AFTERNOON

Dine at theCOMMONS for lunch before stopping at Tost and Found to get your last shopping fix before departing Bangkok.



DESTINATION GUIDE

Chiang Mai

Quick Facts, 5 Unique Landmarks to visit, To Stay, To See, To Do, To Buy, To Eat, How to get there? Best time to go, Suggested Itinerary



Wat Lok Molee Chang Phuak Market Wat Chiang Yuen Wat Pa Pao

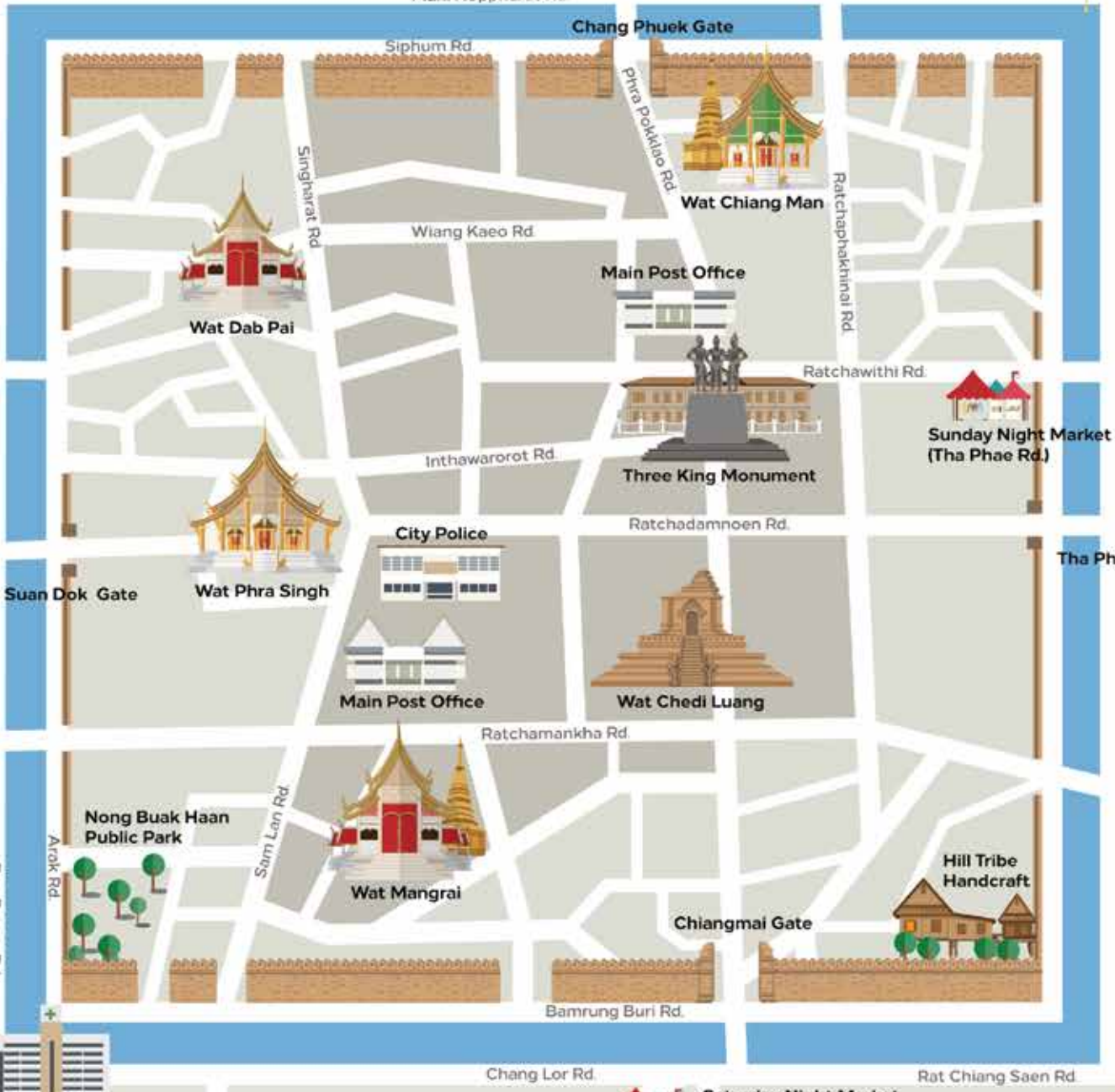


Central Kad Suan Kaew



Chiangmai Ram Hospital

Mani Noppharat Rd



Maharaj Nakorn Chiangmai Hospital

Suan Dok Gate

Bun Ruang Rd

Suan Prung Hospital

Chang Lor Rd

Saturday Night Market (Wua Lai Rd.)

Rat Chiang Saen Rd

Tha Phae Gate

Sunday Night Market (Tha Phae Rd.)

Chang Phuak Gate

Wat Chiang Man

Main Post Office

Three King Monument

Wat Chedi Luang

Chiangmai Gate

Hill Tribe Handcraft

Wat Dab Pai

Wat Phra Singh

Main Post Office

Wat Mangrai

City Police

Wiang Kao Rd

Inthawarorot Rd

Ratchamankha Rd

Bamrung Buri Rd

Singharat Rd

Siphum Rd

Phra Pokkiao Rd

Ratchaphakhinai Rd

Ratchawithi Rd

Ratchadamnoen Rd

Suan Lan Rd

Nong Buak Haan Public Park

Chang Lor Rd

Rat Chiang Saen Rd





SECTION 01

CHIANG MAI

QUICK FACTS

Established in 1296 by King Mangrai, Chiang Mai is one of Thailand's oldest cities. Dotted throughout the city are reminders of its historic past, particularly its crumbling temples and iconic Old City Wall which are key tourist attractions today.

Today, the Old City is only a part of Chiang Mai, with the sprawling, modern metropolis now stretching out past the Ping River and expanding further south each year.

In spite of large-scale development, the beauty of Chiang Mai is that it still only takes a few minutes to reach the countryside when driving out from the center, with endless rice paddies to the southeast of the city, while the spectacular Doi Suthep Mountain towers overhead from the northwestern side.

With so many festivals, markets, temples, adventure activities, restaurants, affordable hotels, spas, and much more to see and do, it's no wonder why Chiang Mai constantly picks up travel awards and recommendations, including 2nd place on Travel + Leisure Magazine's list of Best Cities (2016) and 6th place on Lonely Planet's list of Best Asian Destinations for 2018.





SECTION 01

CHIANG MAI

5 UNIQUE LANDMARKS TO VISIT

01

Chiang Mai Old City

The epicenter of Chiang Mai, most travelers base themselves in and around the Old City walls as this is where the highest concentration of hotels, bars, restaurants, shops and galleries are found. It's home to some of the must-see temples too, like the towering Wat Chedi Luang.
www.chiangmai.bangkok.com/chiangmai-city



02 Thapae Walking Street Market

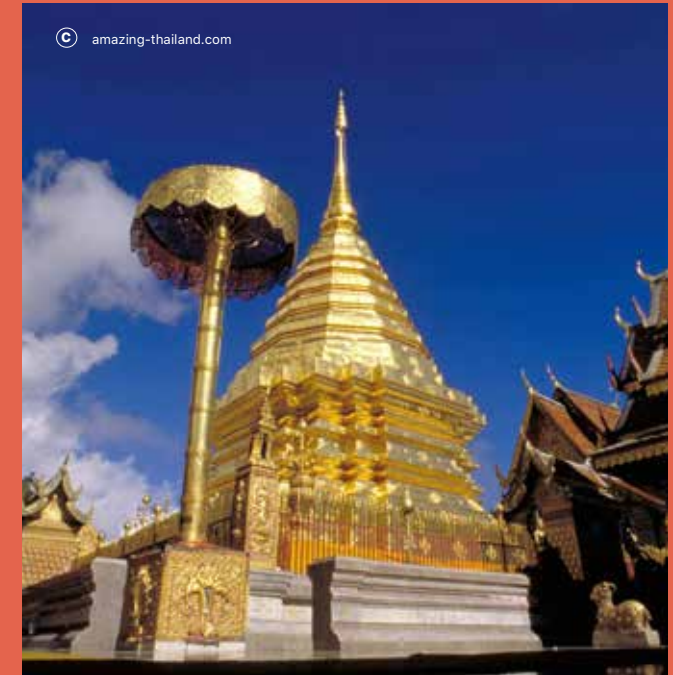
If you're in town on a Sunday, this is one market that is not to be missed. Stretching from the ancient Thapae Gate (hence, the name), the walking street sees surrounding roads closed off to traffic, making way for hundreds of vendors to set up their stalls, selling an eclectic selection of souvenirs, handicrafts, arts, street food snacks, accessories, clothes and much more.
www.thailandtourismdirectory.go.th/en/info/attraction/detail/itemid/5283



03

Wat Phrathat Doi Suthep

Situated half-way up the majestic Doi Suthep Mountain, a visit to this glorious, golden-clad temple should be on any travel itinerary to Chiang Mai. Private tours are available, but the best and cheapest way to reach the temple is to hop on a red songtheaw taxi, which departs regularly from the city's zoo; the fun journey up the twisting roads takes around 20 minutes.
www.thaizer.com/tourist-attractions/wat-phra-thai-doi-suthep-chiang-mai



04 Thai Elephant Home

Having picked up various Thailand Tourism awards, the Thai Elephant Home has a genuine mission to rehabilitate and protect rescued elephants without chaining these majestic beasts up or forcing them to perform tricks. Well worth a visit for wildlife lovers!
www.thaielephanthome.com



05 Zira Spa

Situated in Chiang Mai's Old Town, Zira Spa follows a holistic approach to full-body rejuvenation through massage and a number of different therapeutic treatments. It's also set in a stunning Lanna Northern Thai-style building, which adds to the authentic, peaceful atmosphere.
www.ziraspa.com



TO STAY

RECOMMENDED RESORTS

Chala Number 6

Offering guests a little slice of luxury, Chala Number 6 has a range of modern, well-equipped rooms, many of which of center around the resort's tranquil swimming pool. Location wise, it gets much better as some of the Old City's main attractions are within walking distance!

www.chalanumber6.com

Na Nirand Romantic Boutique Resort

Following a distinct Lanna-Colonial design, Na Nirand Romantic Boutique Resort is well-placed in the center of Chiang Mai, yet still offers guests a tranquil atmosphere with a peaceful location hidden away from the main road. Expect luxurious rooms and attentive, warm hospitality.

www.nanirand.com

The Lab Poshtel

This new hotel boasts a great selection of room options; splurge on one of their four different private room types or save some money by booking into their well-equipped mixed dorm room. A good option if you want to be near Chiang Mai's trendy Nimman Road.

www.thelabposhtel.com

RECOMMENDED BUDGET HOTEL



Kate and Hasu Boutique Chiangmai

Small, stylish and very budget-friendly, Kate and Hasu's boutique hotel is well appointed; think Lanna-inspired decor with a modern twist. It's currently one of the best-rated hotels in the city.

www.kateandhasu.com

RECOMMENDED NEWLY OPENED HOTEL

Raya Heritage

For those looking to stay near the riverside in style, look no further than Raya Heritage. The 33-suite hotel is a new-build, but its design stays true to Chiang Mai's distinctive architectural style. Each suite has its own riverfront veranda, a reminder of how villagers used to gather together by the water to socialize every evening.

www.rayaheritage.com



The Lab Poshtel, a great option if you want to be near Chiang Mai's trendy Nimman Rd.

RECOMMENDED OVERNIGHTS WITH LOCAL

Mae Kampong

Stay in a local's home in this remote Northern Thai village. In recent years, the Mae Kampong community has formed a co-operative initiation to bring in sustainable tourism - with proceeds going straight back to the locals.

www.maekamponghomestay.net

CAMP Chiang Mai

CAMP Chiang Mai offers a so-called "glamping" experience in a stunning rural setting within Chiang Mai's Mae Rim district. Alongside basic tented accommodation (don't worry, you don't have to pitch them yourself), there is Wi-Fi, dining and BBQ facilities.

Tel: 09-3996-9992



RECOMMENDED HOMESTAY/ LOCAL ACCOMMODATION

Cher Cheeva Homestay

Escape the hustle and bustle of Chiang Mai's city at this back-to-nature homestay. Surrounded by the forest and next to a gushing stream, this homestay offers a range of basic hut-style rooms, as well as scenic chill-out platforms overlooking the water.

Tel: 09-6698-9061



RECOMMENDED HOSTELS

Oxotel

Once an old shop-house, this 50-year-old building has been beautifully renovated into a trendy hostel. You'll find all the mod-cons here like fast Wi-Fi and cafe downstairs. Oxotel is also conveniently located near Chiang Mai's international airport.

www.oxotelchiangmai.com

Muan Hostel

This new accommodation proves you don't have to slum it anymore when staying in hostels in Chiang Mai. Dorm rooms here are clean, spacious and well-equipped - but perhaps the best thing about Muan hostel is its location: right opposite Thapae Gate.

Tel: 0-5323-5440





TO SEE

📍 CULTURAL ATTRACTIONS

01 Wat Lok Molee

Another must-see temple in Chiang Mai, Wat Lok Molee features a huge temple hall, with its multi-layered wooden roof designed according to traditional Lanna architecture. A 400-year-old chedi can also be admired, which is hidden around the back of the main hall.

www.renown-travel.com/temples/wat-lok-molee.html



02 Wat Phan Tao

Translated into “the temple of a thousand kilns”, Wat Phan Tao is one of the oldest in Chiang Mai, originally built in the 14th century. The main Buddhist hall and impressive surrounding gardens are open for all to explore.

www.chiangmai.bangkok.com/attractions/wat-phan-tao.htm



01
Wat Lok Molee



02
Wat Phan Tao



03
Wat Chedi Luang

03 Wat Chedi Luang

With an Old City location (close to hundreds of hotels and guesthouses) this ancient structure once housed the Emerald Buddha, the most-highly revered Buddhist image in Thailand. Expect it to get busy during the day!

www.chiangmai.bangkok.com/attractions/wat-chedi-luang.htm



04

Wat Ton Kwen

Not Chiang Mai's most colorful of temples - in fact, rather the opposite! Wat Ton Kwen features deep brown and black tones inside and out, creating a striking, almost Gothic-like feel and atmosphere. Explore the main Buddhist hall and surrounding gardens.

www.maewangelephantcare.com/detail/11



05

Wat Umong

Situated in the foothills of Doi Suthep (just 10-20 minutes away from the center), this unique, ancient temple features a series of tunnels that you can explore. Look out for the Buddha statues dotted along the way.

www.renown-travel.com/temples/wat-umong.html



06 Wat Sri Suphan

If you're doing a temple tour in Chiang Mai, Wat Sri Suphan - aka. The "Silver Temple" - should be high on your list. Just as its name suggests, the small but dazzling main building is covered in a layer of silver, with contrasting blue marbled stairs leading worshippers and tourists inside.

www.chiangmai.bangkok.com/attractions/wat-sri-suphan.htm



07 Wat Sakithaka (Wat Pha Lat)

Tucked away out of sight in the lush green jungles outside the city, Wat Sakithaka is a small temple which features a crumbling old chedi as its centerpiece. It is the perfect place to escape the crowds while soaking up the historic atmosphere and also recommended as a place for meditation.

www.chiangmaicitylife.com/citylife-articles/the-hidden-temple-wat-pha-lat

08

Chiang Mai National Museum

Home to the most comprehensive exhibitions about Chiang Mai, as well as the history of the Lanna Kingdom and ancient Siam, this museum is housed in a stunning Northern-style building complete with a multi-tiered wooden roof.

www.museumthailand.com/en/museum/Chiang-Mai-National-Museum-



09 Tai Lue House - Doi Saket

Learn all about the Tai Lue people's way of life with a visit to this hill tribe house in the mountains of Doi Saket. In the surrounding village, you can learn traditional skills, like weaving and cooking delicious Tai Lue food.

Tel: 08-1951-9320, 0-5349-6264

10 Tai Khoen Cultural Center Sangangpa Village

Originally set up to preserve and raise awareness about traditional Thai culture, this interesting center in the charming Sangangpa Village holds regular talks and workshops run by local experts and monks.

Tel: 08-9998-1316



01

**Ban Pa Pong Piang
Rice Terraces**

This spot is known for its gorgeous rice terraces, with the paddies stacked on top of one another leading up the hillside. The best time to visit is in the morning during rainy season when the colors are at their most vibrant. You can even stay overnight in a hut, but no electricity or room service here, unfortunately.

www.thailandhilltribeholidays.com/pa-pong-piang-rice-terraces-chiang-mai



02

Doi Mon Jong

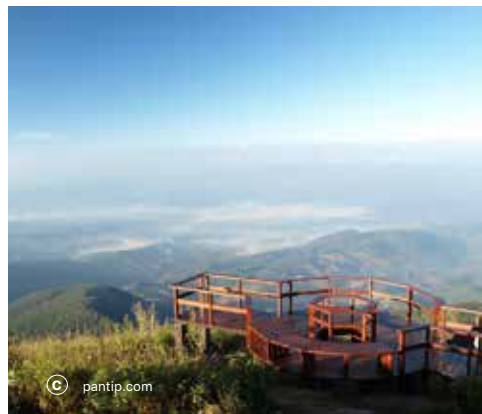
Doi Mon Jong is home to an abundance of wildlife; if you're lucky, you may spot mountain goats, other small mammals, exotic birds, and wild boar. Part of the wider Omkoi Wildlife Sanctuary, a trek to the mountain's peak affords some of the most breathtaking scenery in the country. You can also stay overnight with advanced permission.

www.tourismthailand.org/Attraction/Doi-Mon-Chong--3958

03 **Kew Mae Pan
Nature Trail**

For adventure seekers looking to stretch their legs in some of Chiang Mai's best countryside, Kew Mae Pan Nature Trail is highly recommended. It is actually located inside Doi Inthanon National Park (home to Thailand's highest peak). The 3-hour hike takes you just below a healthy and safe limit of 2,200 meters above sea level, but affords some more specular panoramas.

www.chiangmaitraveller.com/kew-mae-pan-nature-trail-chiang-mai



© pantip.com



04

**Monson Viewpoint
Doi Ang Khang**

Another great spot to see the morning mist roll over the hills of Northern Thailand, Doi Ang Khang is a preferred spot for campers thanks to its stunning views and cool weather. There is a designated area to pitch up your tent and a free viewing deck nearly 1,800 meters above sea level.

www.tourismthailand.org/Attraction/Doi-Ang-Khang--6050

05 **Mae Ya
Waterfall**

On your way up to Thailand's tallest peak at Doi Inthanon, make sure you stop off at this amazing 30-tiered waterfall. With water cascading down some 200 meters from the top of the cliff, this is one of the country's most stunning viewpoints especially if you visit towards the end of the rainy season.

www.mychiangmaitravel.com/mae-ya-waterfall



01 MAIIAM Museum

The MAIIAM Museum of Contemporary Art in Chiang Mai is a spacious gallery housing an ever-rotating collection of works from local artists. A little drive out from the city center, but still a must for art enthusiasts.

www.maiiam.com



02 Kaomai Estate 1955

Once the site of some 50 tobacco drying barns, the Kaomai Estate has been transformed into one of the city's most impressive design spaces. Stroll through the landscaped gardens, check out the grass-covered barns and sip on some local coffee in the renovated warehouse that retains a distinctly industrial feel.

www.kaomailanna.com



03 ASA Lanna Center

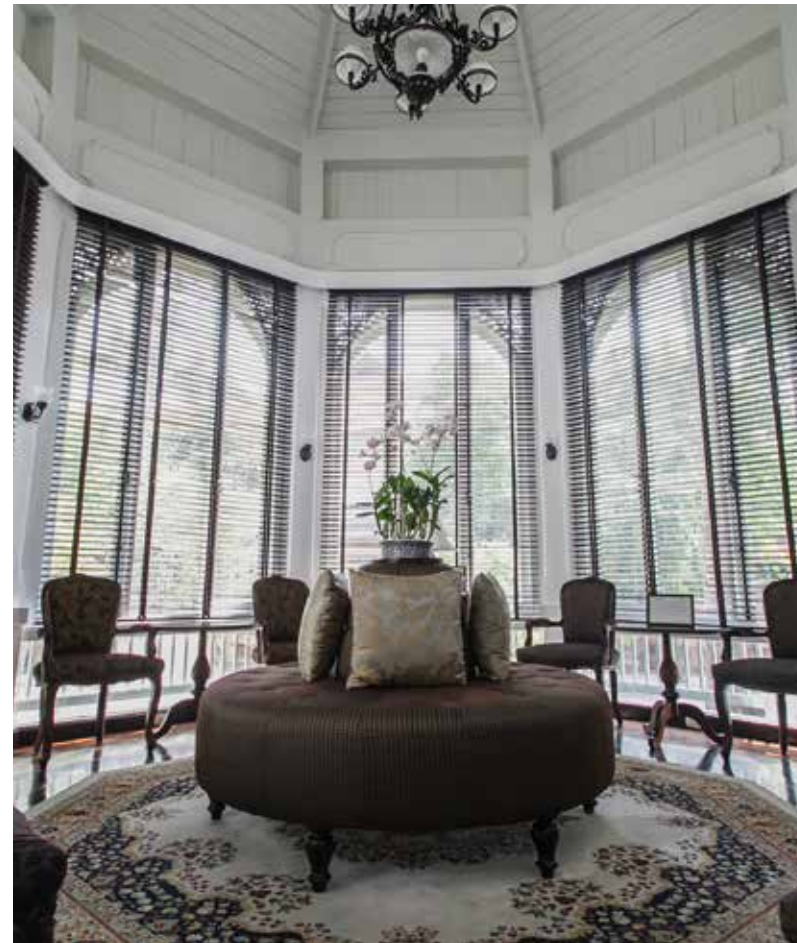
A branch of the Association of Siamese Architects (ASA), this site offers a range of architectural reminders of Chiang Mai's identity, including a grass-covered staircase, a brick-layered courtyard, and a Lanna-style pavilion at the very top.

www.architizer.com/projects/asa-lanna-center

04 TCDC Chiang Mai

Walking distance from the Ping River, Thailand Creative & Design Center (TCDC) is the country's most important design and creativity center, supporting young entrepreneurs, designers, local artists and students.

www.cac-art.info/spaces/tcdc-chiang-mai



05 Ping Nakara Boutique Hotel & Spa

A glorious representation of Chiang Mai's ancient and often forgotten past is this Lanna-style mansion that now operates as a hotel. With an on-site spa and dining facilities, you don't have to book-in for the night to be able to appreciate the architecture of this stunning all-white building.

www.pingnakara.com



01 Wat Ket Community

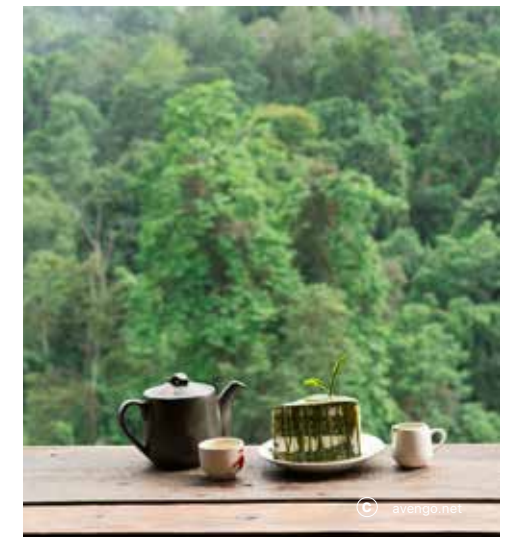
This quaint little community sits on the eastern banks of the Ping River. A melting pot of nationalities who settled around the temple over 100 years ago have made this one of Chiang Mai's most culturally diverse communities, with a museum to look round and provides plenty of street food.

www.tourismthailand.org/Attraction/Wat-Ket-Community--3924

02

Chiang Mai Design Week

An annual event that brings together “designers, craftspeople, creative entrepreneurs, and business people to showcase their new projects and innovations”. The creative celebration, normally held at the start of December, attracts over 500 participants from 10 countries. www.worlddesignweeks.org/design-weeks/2018/12/6/chiang-mai-design-week



03 Lung Dech Tea Farm

Learn about one of Chiang Mai's most exciting new industries at Lung Dech Tea Farm. Here, visitors can learn about how tea leaves are grown, harvested and packaged - as well as sample the farm's signature drinks.

Tel: 08-1163-3765



TO DO

WORKSHOPS / ACTIVITIES

Elephant Nature Park

One of the few elephant sanctuaries where the elephants are left to roam free (with none of the silly tricks), this park lets you get up close and personal to these majestic beasts who have been rescued and rehabilitated. Volunteers can feed, bathe and help out with cleaning the elephants' enclosures.

www.elephantnaturepark.org

Slow Hands Studio

A small artistic community near Chiang Mai University invites students and foreign visitors alike to participate in a range of creative workshops with a focus on ceramic-making. Classes are tailored to different abilities with Thai and English sessions available.

www.turquoiseworld.wixsite.com/slowhands

Indigo Workshop @ Studio Naenna

Here, you'll find a community of expert female weavers, embroiderers, designers and support staff who collectively comprise "Weavers for the Environment". If you're interested, pop into the studio to find out about the many workshops and design activities held here on a regular basis.

www.studio-naenna.com



Formula Hmong Cart Racing

You've heard of Formula One, but how about "Formula Hmong"? This event, a play on words of the famous racing event, sees drivers from the local Hmong villages race down a dirt track in makeshift carts. The tournament is held every December, and tourists can give it a go for just 50 baht!

www.bikinghobo.blogspot.com/2016/04/formula-hmong-wooden-cart-racing.html

Thai Akha Cooking School

Run by the native Chiang Mai Akha people, this cooking workshop not only teaches you some traditional recipes, but also gives you the opportunity to learn more about the Akha people, their culture and food, which is supposedly much healthier than regular Thai food.

www.thaiakhakitchen.com

RELAXING



Fah Lanna Spa

Fah Lanna aims to provide a high level of customer service at affordable prices. The focus here is on traditional Thai massage, with techniques dating back hundreds of years, as well as a few other body treatments.

www.fahlanna.com

Cheeva Spa

Having picked up several Thailand tourism awards, Cheeva Spa is a must-visit in Chiang Mai if you're in the mood for some luxurious pampering. With two city locations (one just outside the Old City gates), the spa offers premium packages including full body scrubs, massages as well as a sauna and steam room.

www.cheevaspa.com



LIKE A LOCAL

Kiw Lae Noi Village

A rural, laid-back village known for its expert wood carvers. Take a long road trip here through the hills of Chiang Mai to see the carvers in action; they use all parts of the tree without any waste. It's also a great place to pick up an OTOP (One Tambon, One Product) souvenir right from the source, cutting out the middleman!

www.handicrafttourism.com/en/tourismvillage/kiw-lae-noi-village/

Ban Rai Jai Sook

Located at Amphur Hang Dong, Ban Rai Jai Sook is a learning center for specialist weaving of traditional Lanna fabrics. Visit the on-site museum to learn about the fabric dyeing process that uses natural colors.

www.notmasstravel.blogspot.com/2016/10/weave-your-trip-and-dye-your-soul-baan.html



INTERESTING WALKS

Ang Ka Nature Trail, Doi Inthanon

If you just want to get a taste of trekking through Chiang Mai's famous Doi Inthanon National Park, try the Ang Ka Nature Trail. While a little steep in some places, the route is less than 400 meters in length and only takes around 30 minutes to complete. It's a scenic route with mild weather most of the year.

www.mychiangmaitour.com/angkaluang

Canopy Walkway

Walk 20 meters above the floor along this 400-meter-long walkway. Made of fiberglass, glass (so you can see all the way down below) and steel, this 50-million-baht project is part of the highly recommended Queen Sirikit Botanic Gardens in the Mae Rim district of Chiang Mai.

www.thairesidents.com/lifestyle/chiang-mais-fascinating-canopy-walkway



TO BUY

◎ RETAIL

Jibberish Homemade Zakka Shop

Head to 'Jibberish' for Local products handmade jewelry, ceramics, cards and more. Items here are designed with the Japanese 'zakka' concept in mind, which places emphasis on "making one's life and home more comfortable and aesthetically pleasing".

Tel: 08-6252-9489

Butterfly Collection

Bored of the same old, overly-priced branded perfumes that everybody else wears? Then the answer could be waiting for you at Butterfly Collection, a shop specializing in unique perfumes and scents designed to evoke memories and emotions.

www.butterfly-collection.com



◎ CRAFT



Mae Chaem's Teen Jok Handicrafts Center

This center is well-known locally for churning out quality fabric with original patterns, vibrant colors and a distinctive weaving style. Mae Chaem's sarongs and fabrics have become popular throughout Thailand, and this is the place to buy your very own without paying over the odds.

www.thetrider.com/tour-options/chiang-mai-thailand/mc-information/mc-attractions/pha-teen-jok-weaving

Baan Kang Wat

A brand new collection of boutique shops, Baan Kang Wat comprises a collection of shop-houses selling handmade crafts, high-quality clothes and unique souvenirs close to Doi Suthep. It's kind of like part lifestyle mall, part model village.

www.paperplanesblog.com/baan-kang-wat-an-artists-village-in-chiang-mai

Ginger Shop

A highly-recommended place in Chiang Mai for your vintage furniture, antiques, original paintings and lots of other quirky trinkets. There is also a bold and bright fashion section that's worth checking out, too.

www.thehousebygingercm.com

◎ SOUVENIRS

Jing Jai Market

Escape the busy city markets for this slightly place Jing Jai Market specializes in handmade souvenirs, crafts, and fresh produce. There is also a section where you can sit, chill, grab a drink and listen to the live music with the mostly local crowd.

www.chiangmai.bangkok.com/shopping/jing-jai-market.htm



 [Jing Jai Market, the out-of-town alternative shopping destination.](http://www.chiangmai.bangkok.com/shopping/jing-jai-market.htm)

◎ LOCAL MARKET



Thapae Walking Street

By far the most popular thing to do if you're in Chiang Mai on a Sunday evening is to head to Thapae Gate, with the surrounding Old City area closed off to traffic for this weekly walking street market. Vendors set up small stalls, often with goods displayed on the floor, as well as live entertainment, fresh street food and pop-up cocktail bars.

www.thailandtourismdirectory.go.th/en/info/attraction/detail/itemid/5283

Farmer's Market

A semi-regular event well-suited for international foodies, Chiang Mai's Farmer's Market brings the best local, organic products from the farms around to countryside to a convenient, easy-to-reach city location. As well as fresh ingredients, expect stalls to sell cooked dishes, coffee and more.

www.thaizer.com/tourist-attractions/chiang-mai-farmers-market-every-friday

Ploen Ruedee Night Market

Delicious food, live music and a friendly local atmosphere await at Ploen Ruedee Night Market. As well as a few stalls selling clothes and accessories, there are dozens of vendors serving up cooked-to-order dishes - you can then take a seat in the middle on one of the surprisingly comfortable haystacks to enjoy the music.

www.chiangmai.bangkok.com/shopping/ploen-rudee-night-market.htm

Wualai Saturday Walking Street

Can't make it to Sunday's famous Thapae Walking Street? Then don't fret: Chiang Mai has another just-as-good (but much less crowded) night market every Saturday evening. This one is located towards the south of the Old City walls and offers a good range of accessories, food, clothes, handicrafts, artwork, antiques and much more.

www.chiangmai.bangkok.com/shopping/wualai-walking-street.htm



TO EAT

☉ STREET FOOD

Ko Neng Patonggo

Something this sweet isn't everybody's idea of a normal breakfast, but these deep-fried dough balls dipped in sweet cream have to be tasted to be believed. Get up early and head to Ko Neng Patonggo a shop that has been selling these indulgent snacks for some 30 years.

Tel: 09-4637-6333

NUN's Restaurant (Somtam Soi 5)

Khun Nun, the shop's owner, visits a local fresh market every morning to bring you some of Chiang Mai's most highly-rated Thai classics, with the specialty here being somtam (spicy papaya salad).

Tel: 08-6184-9258

Roti Pa Dae

Freshly fried Rotis (pancakes) are a staple snack for any traveler passing through Thailand. For one of Chiang Mai's very best, head to Roti Pa Dae near Wat Mahawan in the Old City. Order as you like it, with a choice of eggs, bananas, chocolates and a range of other sweet fillings.

Tel: 08-1021-9496

First: Ko Neng Patonggo
Second: NUN's Restaurant (Somtam Soi 5)
Third: Roti Pa Dae



☉ FINE DINING

David's Kitchen

A highlight of Chiang Mai's ever-growing fine-dining scene, a meal at David's Kitchen (now located on Bumrungrad Road in Chiang Mai) won't come particularly cheap, but it will leave a lasting impression. As well as the food, we also love the setting, with the dining room situated underneath a thatched roof with some quaint surrounding gardens.

www.davidskitchen.co.th

The B Samcook Home 16

With modern décor and a long organic menu, some of the dishes served up at The B Samcook Home 16 rival the best you'll taste in the country. Go for their beer-battered herbal chicken wings or the crab and cream cheese spring rolls – trust us, you won't be disappointed!

www.facebook.com/thebfamilycnx



☉ VEGETARIAN

Alice's Organic Vegetarian Restaurant

Chiang Mai is brimming with vegan-friendly restaurants; one of the best is found on "Loi Kroth" – a road more famous for its girlie bars than its healthy eating! As Alice's restaurant name suggests dishes here, which contain ingredients like kombucha and veggie proteins, are all organic and meat-free.

www.facebook.com/Alicesorganic



☉ HALAL



Halal Mira Cuisine

Head to Mira Residence & Resort Chiang Mai to find this superb Halal-friendly restaurant - with a menu of superb Japanese dishes. There is no pork on the menu, following Halal customs.

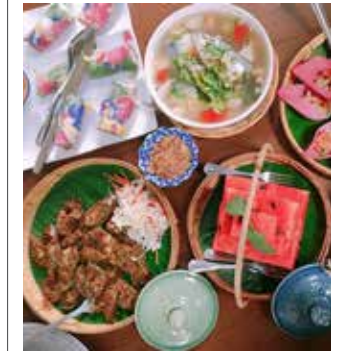
Tel: 06-3114-8430

☉ HEALTHY

Balance Me

Another great healthy restaurant, Balance Me is the place to go for authentic tasting Thai food, just without so much oil and fat that goes into many of the country's most iconic dishes. Expect wallet-friendly prices, too.

Tel: 06-3664-6551



Ginger Farm Kitchen

Fresh, organic, clean food is what Ginger Farm Kitchen is all about. Products are brought here straight from local farms (following the Chiang Mai's very in-trend "farm to table concept"). The result? Fresh, vibrant flavors that are often hard to find when it comes to eating healthy in Thailand.

www.facebook.com/gingerfarmkitchen





First: *The Baristro at Ping River, The cafe that sits next to Chiang Mai's main river.*
Second: *No.39 Cafe, a back-to-nature cafe hangout.*
Third & Fourth: *Woo Cafe, the cafe-slash-gallery with the artwork found upstairs on the second floor.*

The Baristro at Ping River

Fresh coffee, cool riverside views and loft-chic décor all attract a young and hip crowd to this new coffee spot next to Chiang Mai's main river. Open 8 a.m. - 10 p.m., it's also a good spot for an afternoon bite.

www.facebook.com/thebaristro

No.39 Cafe

Escape the city streets at this back-to-nature cafe hangout, with the venue featuring a small pond in the middle where you can sit around while sipping on coffee. The converted old shop-house sells a variety of other drinks, too, like green tea, smoothies, baked snacks and more.

www.chiangmaifamilyguide.com/no-39-cafe-instagram-family-friendly-cafe

Woo Cafe

A cool space in Chiang Mai's laid-back Wat Ket neighborhood, Woo Cafe combines good coffee with excellent artwork, essentially doubling up as a cafe-slash-gallery (with the artwork found upstairs on the second floor). They also have a newly-opened 'lifestyle shop'. The whole venue is open 10 a.m. - 10 p.m. every day.

www.woochiangmai.com



North Gate

Over the years, North Gate has established itself as one of the most popular bars in the city, thanks to their nightly live jazz performances. In fact, it's become so popular that some nights it can be difficult to get a seat (unless you arrive early), with the crowd spilling out onto the pavement (drink in hand!)

www.facebook.com/northgate.jazzcoop

Zoe in Yellow

Zoe in Yellow is located in a cul-de-sac full of other bars and clubs just off one of Chiang Mai's main backpacker streets near the Thapae Gate. Things start off slow here, but by the end of the night, the place will normally be packed, with commercial EDM music and cheap cocktail buckets keeping the party going well into the early hours.

www.facebook.com/yellowbar.chiangmai

LVMC – Living Machine

A decent chill-out spot for local university students, expats and the odd tourists located near the buzzing Nimman Road. Expect cheap drinks, Thai pub-style snacks and a friendly vibe at Living Machine.

Tel: 08-0590-5556



First: *North Gate, one of the most popular bars in the city with their nightly jazz performances.*
Second: *Zoe in Yellow*
Third & Fourth: *LVMC - Living Machine, the decent chill-out spot for local university students, expats and the odd tourists.*



SECTION 01

CHIANG MAI

HOW TO GET THERE?

◎ BY BUS

The trip north from Bangkok to Chiang Mai is a long one, taking around 8 hours in total.

Most people who take the bus (which isn't that much cheaper than flying) opt to go overnight. Big bus operators depart from Bangkok's Northern Bus Terminal at Mo Chit throughout the day.

◎ BY PLANE

The best way to get to Chiang Mai is by air, especially if you are coming from Bangkok.

Airlines like Thai AirAsia, Thai Smile, Nok Air, Scoot, and VietJet all have daily flights back and forth (both from Suvarnabhumi Airport and Don Mueang Airport in Bangkok) to Chiang Mai International Airport. The journey takes just over an hour and one-way tickets can be bought for around 1,500 baht (if purchased in advance).



© commons.wikimedia.com



© lifewithmuay.com

◎ BY TRAIN

If you're not in a rush and want to get the 'real backpacker' experience, heading up north to Chiang Mai on the sleeper train is an alluring option.

While the journey is long and tedious, the good news is that authorities have recently made some important upgrades to the train service, including renovated carriages and improved security patrols. A regular sleeper bunk with air-conditioning will cost just under 1,000 baht, with cheaper or more expensive options available. Trains depart from Bangkok's Hua Lamphong Station each evening (do buy your tickets in advance!)

◎ GETTING AROUND

Once you arrive in Chiang Mai, which will be at the airport, bus station or train station, you will need to get into the city center and this will require negotiating a price with a driver.

Modern taxi cars, tuk-tuks and red songtheaws are all available. Once inside the city, most tourists choose to use tuk-tuks (again, do negotiate the price before you get in). You can also rent bicycles (50 - 100 baht a day) or scooters (around 250 - 300 baht per day).



© loolatravel.com



© loolatravel.com



Best time to visit Chiang Mai is around November to March as the weather is getting cool, although the city is gets quite busy.

BEST TIME TO GO

The beauty of Chiang Mai is that it's good to visit any time of year. During rainy seasons here (late April to October) you can expect short showers, rather than downpours all day long. For the best weather, head here anytime from November to March, although this is when the city can get quite busy.



SECTION 01

CHIANG MAI

SUGGESTED ITINERARY

DAY 01

☀️ MORNING

Meet at the designated point for a morning stroll around the heart of this historic city: its old town center, which is enclosed by crumbling fortress walls and its iconic moat (don't worry, there are now bridges to get across!)

Along the way, stop off at Chiang Mai City Arts and Cultural Center before checking out three of the finest temples here, Wat Chedi Luang, Wat Phan Tao and Wat Phra Singh.



☀️ LUNCH

For lunch, head to "NUN's Restaurant" – a highly-rated restaurant where you can get a true taste of Chiang Mai.

After your fill, jump in a songtheaw (converted red taxi) to explore some of the most important sights around the city moats, including Wat Muen San and Wat Sri Suphan. You'll also be shown to a historic community known for crafting silverware where you can buy some souvenirs.

🕒 DINNER

For dinner (after time to freshen up and change clothes at your hotel), head to Baan Landai – another highly-recommended restaurant serving up fine-dining Thai cuisine in a beautiful setting.

With so many markets and bars to enjoy around the city, the rest of the evening is all yours. However, for weeknights, the best place to head for some late night shopping is the bustling Chiang Mai Night Bazaar. If you're visiting on the weekend, the tour will take you to the excellent Wua Lai Walking Street (open on Saturdays only) or Thapae Walking Street (open on Sundays only).

DAY 02

☀️ MORNING

Rise and shine early in the morning at around 8.30 for a trip up to the impressive Wat Phrathat Doi Suthep temple – located half-way up the huge mountain that towers over Chiang Mai!

The drive up the twisting jungle road is fun, and once you're at the temple, pay your respects and ask for a blessing – no matter what faith you have. Admire the iconic golden stupa and check out the panoramic views before hitting the road again.



LUNCH

Your next stop of the morning is a little further up the mountain as you reach Doi Pui, a Hmong tribe village that now relies mainly on tourism as its main source of revenue. Here, there're some good bargains to be had on handmade clothes, as well as souvenirs and you can also check out the small waterfall.

Back down Doi Suthep Mountain and into the city for lunch at B Samcook Home 16 Restaurant.

☀️ AFTERNOON

After an action-packed morning of adventure and cultural exploration, it's time to rest your feet and take things a little easier at Zira Spa, which offers a range of personalized treatment programs, including full-body Thai and oil massage.

Finally, it's back to your hotel bring this 2-day, 1-night taster tour of Chiang Mai to an end.

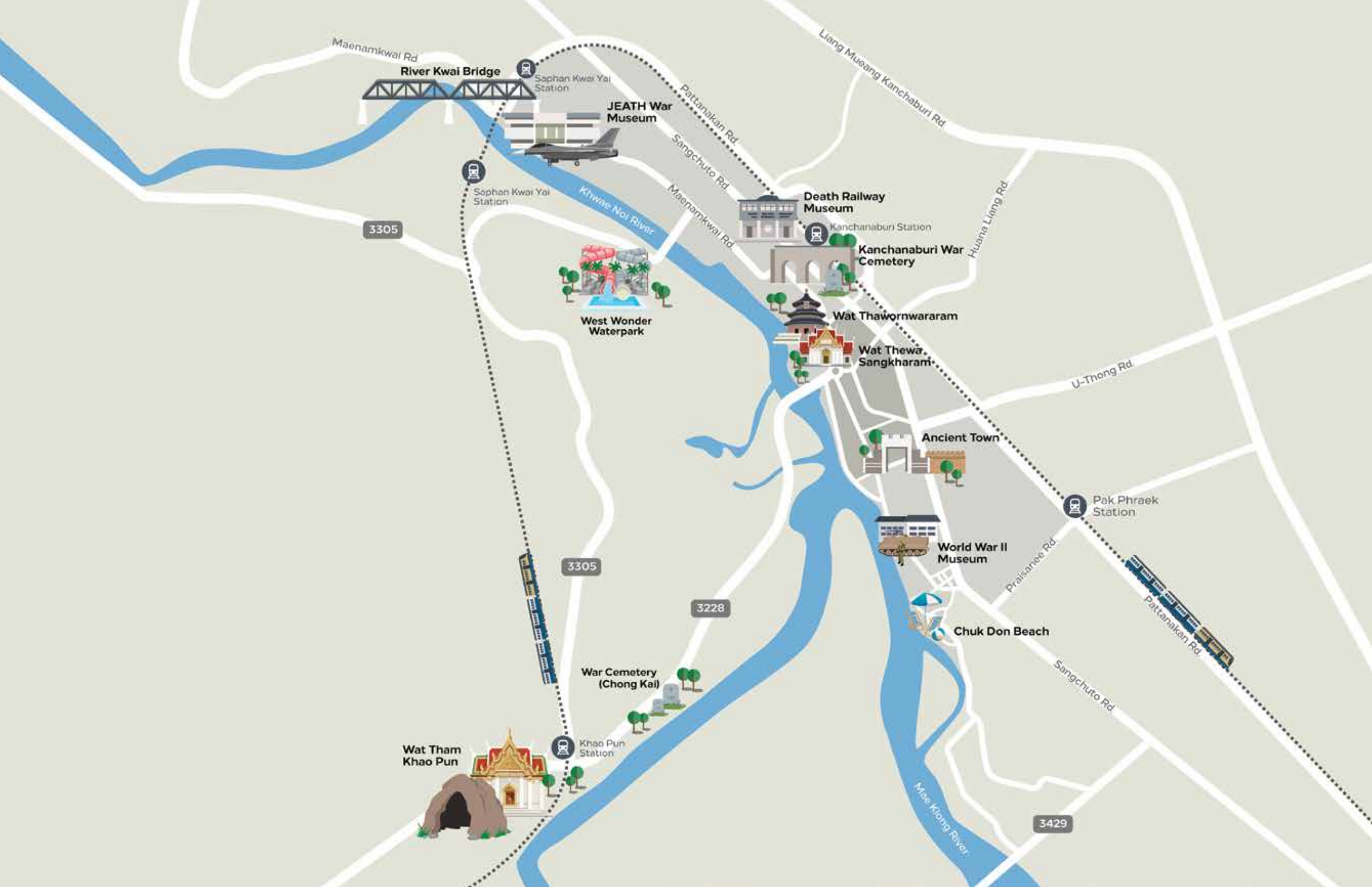


DESTINATION GUIDE

Kanchanaburi

*Quick Facts, 5 Unique Landmarks to visit, To Stay,
To See, To Do, To Buy, To Eat, How to get there?
Best time to go, Suggested Itinerary*





Maenamkwai Rd

River Kwai Bridge

JEATH War Museum



Saphan Kwai Yai Station

3305



West Wonder Waterpark

Death Railway Museum

Kanchanaburi Station

Kanchanaburi War Cemetery

Wat Thawornwararam

Wat Thewa Sangkharam

Ancient Town

U-Thong Rd

Pak Phraek Station

World War II Museum



Chuk Don Beach



3305

3228

War Cemetery (Chong Kai)



Khao Pun Station

Wat Tham Khao Pun



3429

Mae Klong River

Sangchuto Rd

Liang Mueang Kanchaburi Rd

Pattanakarn Rd

Sangchuto Rd

Maenamkwai Rd

Husna Liang Rd

Praisanee Rd



SECTION 01

KANCHANABURI

QUICK FACTS

This scenic western province in Thailand is sprinkled full of both historical and natural attractions, with the 'big three' (Bridge Over the River Kwai, Death Railway and the Allied War Cemetery) proving the most popular with the many day-trippers from Bangkok.

However, those interested in an extended stay will quickly realize that Kanchanaburi has so much more to offer, particularly when venturing out of the main city center and into jungles that spread to the Thai-Myanmar border and beyond.

Much of the action can be found around its two main rivers, the Kwai Yai River and Kwai Noi River (i.e. River Kwai 'big' and 'small') which runs into the Mae Khong. Waterfalls, kayaking, rafting and picturesque lake and river accommodation are all highly recommended, as well as its two main National Parks, namely Erawan and Sai Yok.





SECTION 01

KANCHANABURI

5 UNIQUE LANDMARKS TO VISIT

01 Erawan Waterfall

Considered one of the most beautiful waterfalls in all of Thailand, the seven-tiered Erawan falls is located near the entrance to Erawan National Park, one-hour north of Kanchanaburi town center. Best seen during the rainy season, visitors can climb up each level (although most only make it half-way), swim and even slide down the slippery rocks into pools of refreshing water below.
www.thainationalparks.com/erawan-national-park



02 Tham Krasae Death Railway Bridge

A hair-raising section of the Death Railway line that skirts the mountainside next to the River Kwai. Built over the water on wooden stilts, tourists are able to experience the short train route that follows this spectacular section of track, located near Tham Krasae Station (for a small fee).
www.tielandtothailand.com/death-railway-tour-kanchanaburi-thailand



03 Kanchanaburi Allied War Cemetery

The largest and most-visited of Kanchanaburi's two war cemeteries can be found in the town center, a short walk from the main bus terminal. The poignant site is home to the graves of 6,982 soldiers who lost their lives during World War II. Immaculately maintained, visitors can walk around, inspecting the names and details of mainly British, Australian and Dutch allied soldiers.
www.thaizer.com/tourist-attractions/kanchanaburi-war-cemetery-don-rak



04 Srinakarin Dam

This impressive dam sits on the Kwai Yai River - but the main attraction here is the huge lake which was created as a result. Surrounded by mountainous scenery, there's now a handful of excellent waterside resorts offering a range of fun activities like kayaking, rafting and water slides for the kids.
www.thainationalparks.com/sri-nakarin-dam-national-park



05 The Bridge Over the River Kwai

The landmark that put Kanchanaburi on the global map after inspiring the 1957 Oscar-winning movie "The Bridge Over River Kwai", the town's most popular attraction can be found just a short distance from the city center. Originally built by prisoners of World War II, tourists can still walk across the now-rebuilt section - just as long as no trains are running.
www.tourismthailand.org/Attraction/Bridge-over-the-River-Kwai-231



SECTION 01 KANCHANABURI

TO STAY

☉ RECOMMENDED RESORTS

Rak Nam Resort

Kanchanaburi is well-renowned for its choice of 'floating hotels' and Rak Nam Resort ranks up there with some of the best in terms of location and value for money. Looking over a vast lake, guests can wake up next to the water's edge and even take an evening dinner cruise on a raft.

Tel: 08-6014-2352



Rain Tree Resort

Surrounded by nature, Rain Tree Resort provides a whole range of on-site facilities and spacious en-suite rooms. Find it just 2.5 kilometers away from Kanchanaburi's town center.

www.facebook.com/raintreekan



☉ RECOMMENDED BUDGET HOTELS



By Hotel Kanchanaburi

A modern budget hotel with a selection of different guestrooms to suit different budgets. The main attractions of the town and surrounding province are all a short drive away, including the JEATH War Museum (3.5 km), and 7 km away from the River Kwai Bridge and Wat Tum Sel.

www.facebook.com/byhotelkan



Hop Inn

Clean, comfortable and budget-friendly, Hop Inn is part of the acclaimed The Erawan Group of hotels. Expect 24-hour reception, and a convenient location not far from some of Kanchanaburi's main attractions like the Hellfire Pass, which is under 2 km away.

www.hopinhotel.com

☉ RECOMMENDED FARMSTAYS



Arsom Chomchan

Situated among the lush green rice fields of the province, this out-of-town accommodation is the perfect escape from the crowds that often fill the town on the weekends and holidays. As well as comfortable sleeping quarters, the area has plenty in the way of traditional amenities, especially Thai massage and local eateries.

www.facebook.com/ArSomChomChan



Ban Klang Tung Organic Homestay

This basic accommodation – raised off the ground on wooden stilts – is surrounded by an organic farm, the perfect setting for a more chilled-out break in Kanchanaburi. Soak up the village lifestyle and enjoy the warm hospitality from your local hosts.

www.facebook.com/bktiorganichomestay

☉ RECOMMENDED RAFT

The Floatel Buntern

The aptly-named Floatel Buntern is quite literally a floating hotel – and you can find it in the middle of the lake near Vajiralongkorn Dam. The accommodation is fully equipped with all the usual mod-cons, while their on-site restaurant offers unlimited seafood, drinks and snacks. It's worth noting that there is no air-conditioning since solar power is used (but there is an emergency generator as well).

www.facebook.com/thefloatel



☉ RECOMMENDED NEWLY OPENED HOTELS

Plakan Resort

Enjoying a scenic riverside location not far from the town center, Plakan Resort offers a range of modern rooms, on-site dining facilities and a swimming pool. A hotel that makes a great base to see many of Kanchanaburi's top attractions.

Tel: 0-3454-0550

www.facebook.com/plakanresort

Z9 Resort

Taking on a contemporary curved hut-style design, this small-yet-luxurious resort is one of the most in-demand places to stay in Kanchanaburi at the moment. As well as beautifully appointed rooms, the resort's real unique selling point is its waterside location, with bedside views looking out across the vast Srinakarin Lake.

www.z9resorts.com





SECTION 01 KANCHANABURI

TO SEE

CULTURAL ATTRACTIONS

01 Bodh Gaya Pagoda

Modeled after the real Bodh Gaya in India, this small version of the famous pagoda features a square base and two Mon-style singha sculptures in the front and guarded by the stairs that lead up to the pagoda itself. Its shiny golden surface is spectacular - making it reflect light in every direction. Buddha's relics (that Venerable Father Uttama brought from Sri Lanka for the people to worship) are kept on top of the structure.

Tel: 09-4338-0790



02

Folk Culture Center and Ban Nong Khao Community

Head to this community learning center to discover how local skills and knowledge are put into use, such as fabric weaving, performing arts and jewelry production.

Tel: 08-3314-9973



02
Folk Culture Center
and Ban Nong Khao
Community

03 Mueang Sing Historical Park

Known as the 'Lion City', Mueang Sing Historical Park was once the last outpost of the Angkor Empire over 700 years ago. The crumbling ruins feature the distinct Khmer-style architecture, most notably Prasat Mueang Sing in the middle.

Tel: 0-3467-0264



01
Bodh Gaya
Museum

© thetrippacker.com



03
Mueang Sing
Historical Park

04 Sangkhla Buri

This pretty district may be quite a way from the town center, but the drive close to the Thai-Myanmar border is well worth it to discover Sangkhla's laidback way of life and quaint attractions dotted around the Songalia River. Tribe visits and homestays are also widely available in the area, as most people choose to stay for at least one night given the long drive from Bangkok.

www.migrationology.com/sangkhlaburi-travel-thailand



05

Baan Kao National Museum

For a look back significantly further in time, head to Baan Kao National Museum, which focuses on prehistoric artifacts and archaeological finds sourced from around the Kanchanaburi region over the last 50 years. Many of the items displayed here were found by H.R. Van Heekeren, a Dutch archaeologist and POW forced to work on the Death Railway during WWII.

www.tourismthailand.org/Attraction/Ban-Kao-National-Museum--242



06 Mallika R.E. 124

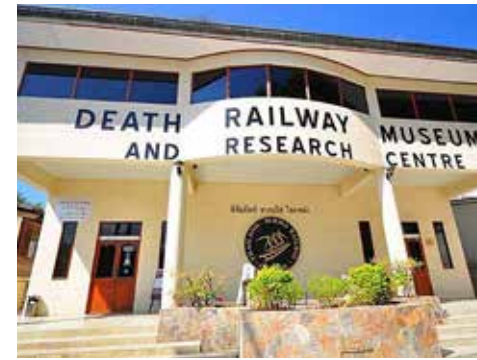
This small-scale retro-city was built to reflect life in ancient Siam during the reign of King Chulalongkorn over 100 years ago. Worth a browse round to get a taste of everyday life of locals living in basic riverside accommodation back in the day.

www.mallika124.com

07 Thailand-Burma Railway Museum

Also known as the "Death Railway Museum", this building houses the town's most comprehensive exhibitions on the construction of the railway line through Thailand to Burma during the Second World War, which saw thousands of prisoners of war (POWs) die in the process.

www.tourismthailand.org/Attraction/Thailand-%E2%80%93-Burma-Railway-Centre--228



08

Mon Bridge of Sangkhla Buri

And if you're in Sangkhla Buri, don't forget to check out the sleepy town's star attraction: the Mon Bridge – which stretches across the Songalia river. At 850 meters long, it's also the second longest wooden bridge in the world.

www.renown-travel.com/central/sangkhlaburi.html

09 Hot Springs at Wat Wang Khanai

Take a well-earned and very relaxing dip in these hot mineral waters (which get up to around 42 degrees Celsius) at Wang Khanai temple. The springs prove popular thanks to their rejuvenating and healing properties – a bit like a Thai-style onsen!

www.thaihealthdestination.spsc.chula.ac.th/types-of-health-tourism-destination/wat-wang-khanai-hot-spring



10 Arts Gallery and War Museum

Another recommended stop-off for those interested in history, the WWII Museum details many of the horrors POWs had to face during the 1940s under Japanese rule. The museum features a collection of exhibits, media and artifact.

www.thailandforvisitors.com/central/Kanchanaburi/ww2-jeath-war-museum.php



01 Safari Park Open Zoo & Camp

This open nature park is home to the most important animal breeding program in Kanchanaburi. Look out for their range of exotic animals including camels, tigers, lions, bears, elephants, deer, zebras, llamas, ostrich, flamingos and more.
www.safaripark-kan.com



02 Huay Mae Khamin Waterfall

These stunning falls used to require a 2 km hike through the jungle to reach, which meant that they attracted much fewer visitors than Kanchanaburi's others. Today, a new road in Sai Yok National park provides much easier access to Huay Mae Khamin Waterfall, which is best seen during the rainy season.
www.thailandadventureguide.com/location/national-parks/huay-mae-khamin-waterfall

03 Wat Tum Khao Poon

Close to the old WWII prisoner camp, this riverside temple and cave complex once served as the medical center for Japanese soldiers (who previously controlled the region). Today, this pretty temple is worth a look, as well as inside to see the impressive stalagmites and stalactites.
www.thailandtourismdirectory.go.th/en/info/attraction/detail/itemid/2267



04 Erawan Waterfall

These stunning, glistening falls have been dubbed the most beautiful in all of Thailand, and for good reason. Comprised of 7 tiers which you can walk up, the waterfall system is found in Erawan National Park, with the best time to swim being the rainy season.
www.thailand-guide.com/kanchanaburi/attractions/erawan-waterfall.htm



05 Giant Monkey Pod Tree

A towering tree near the middle of town makes for an interesting stop-off or quick photo-op. While not an attraction that's going to take up much time, the 20-meter tall tree is also impressively thick – needing at least 10 people with their arms stretched out to make a circle around its circumference.
www.richardbarrow.com/2018/09/controversial-walk-way-built-around-the-giant-rain-tree-in-kanchanaburi



01 Wat Tham Suea

Easily one of the most impressive temples in all of Kanchanaburi, Wat Tham Suea draws in a steady stream of tourists thanks to its hilltop location, overlooking the surrounding paddies and magnificent golden seated Buddha below. To head up to the top, choose either the 157-step climb or opt for the easier cable car ride.

www.sacredsiam.com/thailand-temples/wat-tham-sua-kanchanaburi.html



02 Wat Pho Yen

Designed in a rare Tibetan-style together with a Mahayan Buddhist chapel, this interesting temple is also 100 years old (but has undergone plenty of renovations and additions over the years). Head inside the main chapel to see the highly revered Phra Sakayamuni image.

[www.lovethailand.org/travel/en/10-Kanchanaburi/6849-Wat-Pho-Yen-\(Wat-Jean\).html](http://www.lovethailand.org/travel/en/10-Kanchanaburi/6849-Wat-Pho-Yen-(Wat-Jean).html)



03 Loeng Heng Mong Motorcycle Museum

Design enthusiasts can marvel at what's commonly known as just the "LHM Museum Kanchanaburi", which showcases over 300 vintage motorbikes, as well as an on-site learning center and visitor museum.

www.thaioresidents.com/lifestyle/offbeat-museum-kanchanaburi



04 Wat Thavorn Wararam

This Mahayan temple dates back to 1834, and was originally constructed by Vietnamese immigrants who were forced west after the Thai-Vietnam War during the reign of King Rama III. Today, the temple has been renovated, but still boasts original features inside and out. Tel: 0-3451-1521



05 Wat Tham Phu Wa

Popular as a place of meditation for both monks and outside visitors, Wat Tham Phu Wa is one of the province's more tranquil Buddhist monasteries. The signature feature here is the ancient Khmer design and stone wall bordering the entire complex.

www.tourismthailand.org/Attraction/Wat-Tham-Phu-Wa--240



01 Underwater Temple (Wat Wang Wiwekaram)

Known as Kanchanaburi's "Underwater Temple" or "Wat Wang Wiwekaram", this is one of the province's so-called 'unseen' attractions thanks to its remote location. The temple's entrance is only accessible during summer (March – April), when the water level drops to its lowest point. Upper parts can be seen via a boat tour during other months.

www.tourismthailand.org/Attraction/Underwater-City--4997

02

Chong Kai War Cemetery

Kanchanaburi's second, smaller war cemetery, also known as "Khao Hin Poon Allied War Cemetery", is home to 1,750 graves of the allied prisoners of war, most of whom died in the region during the construction of the Death Railway linking Thailand to Burma.

www.tourismthailand.org/Attraction/Chong-Kai-War-Cemetery--237



03 Wat Metha Tham Phothiyan

Another aesthetically impressive and hugely important Mahayana Buddhist temple. The highlight is its 12 meter Guanyin statue situated inside the middle of the main temple hall.

Tel: 0-3453-1626, 0-3453-1388



SECTION 01 KANCHANABURI

TO DO

WORKSHOPS / ACTIVITIES

Baan Maneewong

This popular Thai dessert shop is where you'll find sweet dishes that use recipes and techniques which have been inherited for generations. Their best seller is the fragrant, sweet and delicate "Kanom Sam Pannee On". It also doubles as a community learning center where foreigners interested in learning about the community's lifestyle and Thai culture can visit.

www.facebook.com/thaidessertmaneewong

Emcharoen Art Gallery

Established by Ajarn Pratueng Emcharoen, a Thai national artist, this space features a learning and exhibition center and is comprised of two unique buildings in Kanchanaburi's Sumrong sub-district area, which offer workshops for young creatives.

www.scene4.com/archivesqv6/2016/jul-2016/0716/janineyasovant0716.html

Somkiet Jewelry Store

Learn about the huge variety of gemstones sourced from the region at Somkiet Jewelry Store. As well as souvenirs to take home, the center runs free classes on how these gemstones are crafted into products for sale, especially around the River Kwai Bridge market.

Tel: 08-9266-4553

**Stand Up Paddle (SUP)**

This agency runs a variety of water activities allowing you to explore the best sites along the River Kwai, including its historical bridge. Choose between kayaks or stand up paddle (SUP) boards – if you can balance! The 4.5 km trip takes around 3 hours.

www.seds-kanchanaburi.com

Tree Top Adventure Park

Swing, zipline and bike through the jungle at this fun adventure park. Suitable for most ages, you can zipline from the park's highest point across a 180-meter-long pond, and then head off on a drift bike to do more exploring.

www.treetopadventurepark.com



RELAXING

ArSom Chomchan

A rural spa that uses traditional techniques, ArSom Chomchan boasts a stunning location surrounded by green paddies, with views stretching to the mountains in the distance. Traditional Thai massage is available, as well as their unique "chicken coop" body steamers to cleanse those pores.

www.facebook.com/ArSomChomChan

Dala Raya Spa

One of the most luxurious pampering spots in town located inside the River Kwai Hotel, Dala Raya Spa offers a range of massage and treatment therapies, including Thai massage, aroma Oil massage and body scrubs.

www.facebook.com/DalaRayaSpa



LIKE A LOCAL

**Baan Nong Khao**

Take a look around this quaint community dedicated to weaving. There is also a learning center where you can discover how fabric weaving is done, as well as performing arts and jewelry production.

www.tourismthailand.org/Attraction/Moo-Baan-Nong-Khao--4990

Kanchanaburi Night Market

Situated in the center of town (not far from the main bus station), this weekly market is a must-visit for its local street food, with stalls setting up makeshift roadside restaurants from around 16.00H.

www.sabaiatkan.com/attractiveplace/jj-night-market-kanchanaburi-train-station-night-market

INTERESTING WALKS

Pakphraek Road

Head off the beaten path to Pakphraek (also known as Baan Nuea), which is the oldest community of Kanchanaburi. Featuring Western-Chino architecture, many houses here date back 180 years, with temples, old shop houses and warehouses to be explored along the way. There is also a walking street market held every Saturday evening to attract more tourists.

www.sabaiatkan.com/attractiveplace/kanchanaburi-travel-pak-phraek-walking-street

The Hellfire Pass

Uncover perhaps the most stunning part of the Thai-Burma Railway, with this segment dug 25 meters deep into the mountainside. An informative museum is located above the pass, which provides extensive information on how the tunnel was built, documenting the harsh working conditions that thousands of POWs were subjected to during WWII.

www.tourismthailand.org/Attraction/Hell-Fire-Pass-Memorial-Museum--258





SECTION 01 KANCHANABURI

TO BUY

RETAIL



Wimon's Young Coconut Jelly Shop

Indulge in some of the province's best sweets at this long-running shop in Tha Maka district. It's known as the first location to sell jelly made using young coconut and highly rated by all those who pass through.
Tel: 0-3460-4456

Food Distribution Center Vermicelli Tha Reul

The Singto brand of vermicelli noodles available here is known for its use of high-quality mung beans without the use of additives. Best of all, you can buy them straight from the distribution center so you know you won't be paying over the odds.
Tel: 0-3461-2465

CRAFT

Anantapol Jewelry

Jewels and rubies from Bo Ploy district in Kanchanaburi are polished and incorporated into intricate pieces – and Anantapol Jewelry is the very place to buy them for a memento of Kanchanaburi! Some are single jewels and some are made into accessories such as necklaces, bangles, rings and more, all available in a variety of sizes.
www.facebook.com/Anantapolply

Areerat Shop

Located in the laidback Ban Nong Khao Community, Areerat is recommended for its hand-woven cloths and fabrics that come in pretty patterns. Garments can be used to wear or as blankets/cloths around the house.

Tel: 0-3458-6061, 08-9612-2553

Bo Ploy Jewellery Handicraft Centre

As well as a range of dazzling jewelry on sale, visitors can also get a behind-the-scenes look at the production process which uses both precious and semi-precious stones, such as blue sapphire, onyx and ruby. Just don't expect items here to be at the normal tourist-friendly price.

www.tourismthailand.org/Shopping/Bo-Ploy-Gems-Handicraft-Center-1081



LOCAL MARKET

Kanchanaburi Municipal Market

Open around the clock, Kanchanaburi's daily Municipal Market provides an insight into what life is really like in town, with local shoppers and traders going about their business - and hardly a tourist in sight. The market sells mostly fresh fruit, vegetables, seafood and raw meat, as well as some clothing and street food stalls.



Sangkha Buri Walking Street Market

For a true taste of true Sangkha Buri culture (and for a great shopping opportunity), the sprawling Sangkhaburi Walking Street Market is not to be missed. The road in the town center closes to traffic every Saturday evening, making way for vendors who set up stalls selling handmade products, crafts, souvenirs from nearby Myanmar, clothes and more. Come hungry, as well, as there are lots of freshly-cooked local delicacies to eat!



SOUVENIRS



Kaew Souvenir Shop

More of a shopping center than a single shop, this large, undercover development proves hugely popular with day-trippers thanks to its convenient location and vast range of affordable souvenirs. It's also a good pit-stop for a refreshing coffee or cold juice.

www.kaew.co.th

Tamarind Widely

For a taste of Thai-style candy, head to this specialist Tamarind sweet shop located around 15 km outside of Kanchanaburi city center - well worth the scenic drive!

www.kaew.co.th

Virgin Coco

Here's a souvenir that might not make it back home fully intact: boxes of irresistible, crispy coconut rolls with chocolate and caramel coating! This shop sells this fusion-style sweet treat packaged up in attractive boxes - an ideal gift for friends and family (and make them jealous of your trip). Other similar items to choose from include chocolate-mixed coconut roll flakes, chocolate-filled Coco Waffle and Cocofruit dip.

E-mail: admin@virgincoco.com



SECTION 01 KANCHANABURI

TO EAT

☉ CAFES



▲ *Meena Cafe, a cafe in Tha Muang district's green rice paddies*

Meena Cafe

Sip on freshly brewed coffee amidst Tha Muang district's green rice paddies at this scenic cafe. The area has plenty to see along the way, and proves particularly popular for photoshoots.

www.facebook.com/meenacafe2017

Sittisang Coffee

Located inside an old Chino-Portuguese building, this is one of the must-see cafes when visiting the charming Pakphraek community. Inside, there is a range of art depicting the history of the neighborhood, as well as a menu of freshly made coffee and tea.

Tel: 08-1384-7413

So Coffee

A contemporary coffee shop providing an oasis from the heat outside - with a chilled atmosphere, cold drinks and a variety of snacks, such as sandwiches made with healthy bread.

www.facebook.com/socoffee.kanchanaburi

☉ FINE DINING

Grills House

With an informal, relaxed ambience, Grills House has become known as one of the most highly-recommended restaurants in town. On the menu you'll find contemporary Thai and fusion dishes that use organic, locally-sourced produce.

www.facebook.com/GrillsHouseKanchanaburi

**Keeree Mantra Restaurant**

Enjoying a stunning rural location, Keeree Mantra affords views overlooking the mountains of Kanchanaburi. Comfy outdoor seating is available for pre- or post-dinner drinks, while finely-tuned local dishes are served inside the large dining room, including free-range chicken in clear spicy soup, Tara chilli paste and fried giant Gourami in fish sauce.

Tel: 0-3454-0889

☉ HEALTHY

All About Me @ Woodtichai Farm

"All About Me" is a combined hydroponic farm and health-conscious restaurant serving up salads that use a range of locally-grown produce, such as green oaks, red oaks, butterheads, red corals, fillets, and cherry tomatoes. Don't forget to take a look around the farm after eating!

www.facebook.com/woodtichaifarm



☉ VEGETARIAN

Kure J KAN

This simple roadside restaurant is dedicated to purely vegetarian food, with the menu encompassing most of the classic Thai dishes you'd find in any other restaurant - minus the meat. Instead, meat substitutes, like tofu, are used.

www.facebook.com/KureJKAN



☉ HALAL

**Dada Roti Ong Halal Food Center**

A well-known restaurant specializing in Halal-friendly rotis, which supposedly have a unique charcoal scent to them. The delicious breads come with a range of toppings, while other items available include sandwiches and curries (great for dipping those rotis).

Tel: 08-9501-8527

☉ CLUBS

**Loft Bar and Restaurant**

Another trendy evening hang-out in Kanchanaburi, the Loft Restaurant and Bar is an ideal spot to catch the sunset over the River Kwai - serving up a variety of Thai and fusion dishes with affordable drinks. Indoor and alfresco dining is available.

Tel: 0-3451-3000

**The Resort Vintage Club**

One of the more upscale places to chill out with some drinks at night, The Resort Vintage Club enjoys a cool location next to the River Kwai; take a seat inside their air-conditioned dining room or relax on the outdoor terrace, with live bands on every night.

Tel: 063-465-3516

The Finn

One of Kanchanaburi's only full-out nightclubs, The Finn welcomes a predominantly young Thai crowd with live music, DJs and moderately priced drinks sold late into the night.

Tel: 09-3464-6522



SECTION 01 KANCHANABURI

HOW TO GET THERE?

Kanchanaburi can be reached in around 2.5 – 3 hours from Bangkok with bus and train services available.

BY CAR

Head along Phetchakasem Road or Borommaratchachonnani Road via Nakhon Chai Si, Nakhon Pathom, Ban Pong, Tha Maka, Tha Muang to reach Kanchanaburi.

The distance is about 129 kilometers, which takes about 2.5 - 3 hours. You can also take the Chalerm Maha Nakorn Expressway.



BY TRAIN

Trains leave Bangkok Noi Railway Station (in Thonburi) twice a day at 7.40 a.m. and 1.50 p.m.

These trains stop at Kanchanaburi Railway Station, Bridge over the River Kwai, Tha Kilen Railway Station and Nam Tok Railway Station. The journey takes about 4.30 hours (less to Kanchanaburi town center).

BY BUS

First class buses (Borommaratchachonnani Road - Nakhon Chai Si) depart from the Bangkok Bus Terminal (South) every 20 minutes during 5 a.m. - 10.30 p.m.

While second class buses depart every 20 minutes during 5 a.m. - 9 p.m., running on the old route (Phetchakasem Road - Om Yai - Nakhon Chai Si) and the new route (Borommaratchachonnani Road - Nakhon Chai Si) which takes about 2 hours.



GETTING AROUND

Tourists can find a range of different ways to get around town, with tuk-tuks, taxis and songtheaws widely available.

For getting around the province, minivans or buses from the main bus terminal are advised, or you can rent a car from a number of town center car rental shops.



BEST TIME TO GO

Kanchanaburi has three distinct seasons; hot and humid (Mar - Jun) monsoon season (Jul - Oct) and then the winter like months (Nov - Feb). However, unlike the beaches in the south, many visitors find that rain isn't much of a problem when visiting Kanchanaburi, especially as much of the action revolves around the wet riverside areas anyway. Also, rainy seasons are when Kanchanaburi's waterfalls are best seen.

In general, Kanchanaburi is suitable to visit all-year-round, but it may be down to your personal preferences as to whether you prefer putting up with the scorching heat or unpredictable rain!

In terms of festivals, look out for the "Bridge over the River Kwai Week", held from the end of November to the beginning of December to commemorate the war. Expect impressive light and sound shows around the famous bridge, as well as a bustling market.



SECTION 01

KANCHANABURI

SUGGESTED ITINERARY

DAY 01



7.50 A.M.

Depart from Thonburi Train Station to Kanchanaburi, admiring the beautiful scenery along the way as the countryside emerges.

11.50 A.M.

Arrive at Tham Krasae, better known as the "Death Railway". Head out on foot, sightseeing and shopping along the way for souvenirs around the train station.



1.37 P.M.

Back on the train to Kanchanaburi city center.

2.40 P.M.

Arrive at the famous Bridge Over the River Kwai - the most iconic landmark in Kanchanaburi built by prisoners of war during World War II. You can walk across and look around the adjacent market.



4.00 P.M.

Check-in at Thyme Hotel (a short drive from the Bridge Over the River Kwai). Freshen up, then head out to see the poignant and well-maintained Kanchanaburi Allied War Cemetery.



6.00 P.M.

Take an evening stroll around Kanchanaburi's new floating market (only open Friday nights).

7.30 P.M.

Relax at Loft Bar and Restaurant - or opt for an equally relaxing time with a massage at Dala Raya Spa.

DAY 02



7.00 A.M.

Breakfast at Kure J Kan Vegetarian food and then onwards to So Coffee.



8.30 A.M.

Depart for Mueang Sing Historical Park, followed by other morning stops including: Mallika R.E. 124, a retro city reflecting the past Siamese lifestyle.

Wat Tham Phu Wa (historical temple); Wat Metha Tham Phothiyian, the center of Mahayana Buddhism.



2.00 P.M.

Lunch at Keeree Mantra Restaurant, a stunning spot overlooking the mountains, rivers and green fields while having lunch.

3.00 P.M.

Check out the Giant Monkey Pod Tree. The tree is over 100 years old (hence its popularity), while horse riding is also available. (booking in advance is needed)

4.30 P.M.

Take a leisurely stroll around the ancient Pakphraek community in the old town part of Kanchanaburi. The neighborhood boasts some impressive old houses and commercial buildings constructed by Chinese immigrants, some of which have been converted into boutique shops, restaurants and cafes.



6.00 P.M.

Do a final stop off to pick up some souvenirs from Kaew Shop before heading back to Bangkok on a minibus.



 DESTINATION GUIDE

Nan

*Quick Facts, 5 Unique Landmarks to visit, To Stay,
To See, To Do, To Buy, To Eat, How to get there?
Best time to go, Suggested Itinerary*





The Noble House



Rangsi Kasem Building



Wat Tha Lo



Nan National Museum

Mahayot Rd

Sumon Thewarat Rd

Wang Rd

Phakong Rd

Nan River

1019

1169

Wat Sri Panton



Wat Phaya Wat



Wat Phumin

Kuang Mueng Nan Walking Street



Wat Phra That Khao Noi

1025

101

1168

Wat Phra That Chae Haeng





SECTION 01

NAN

QUICK FACTS

Characterized by endless rolling mountains dotted with temples and small rural villages, Nan province is situated off Thailand's normal tourist trail, hidden away in the country's easternmost corner of Northern Thailand. Sharing much of its border with neighboring Laos, adventurous visitors are starting to discover why Nan is so special.

The province covers a total area of 11,472 square kilometers and is around 650 kilometers north of Bangkok – quite a drive by car or bus. The main city is called “Mueang Nan”, although its small size and modest range of amenities make it feel more like a quaint town rather than a developed metropolis, which is also part of its charm.

Civilization in Nan dates back at least 700 years, when Sukhothai was the ancient Siamese capital, and the region was also a vassal of the Lannathai kingdom. Today, evidence of mass migration hundreds of years ago can still be seen with Nan's variety of hill tribe people and historic buildings.





SECTION 01

NAN

5 UNIQUE LANDMARKS TO VISIT

01

Pua Town

Located in the center of the province, this quaint little market town acts as a great base to explore the surrounding countryside. The town itself offers basic homestay-style accommodations and some superb local restaurants to refuel.

www.traveling2nanthailand.com/p/pua.html



02

Wat Phumin

One of the prettiest temples in the center of Nan, Wat Phumin impresses with its colorful 19th-century murals depicting what daily life was like 200 years ago. The original structure was built in 1596 but was rebuilt from 1867 to 1875.

www.thaizer.com/tourist-attractions/wat-phumin-nan



03

Wat Phra That Chae Haeng

Cross over the eastern side of Nan's main river to discover the town's most spectacular temple. Originally constructed during the rule of Chao Phraya Kanmueang (1326 A.D. – 1359 A.D.), the towering golden chedi in the center is truly a sight to behold - especially when lit up at night!

www.renown-travel.com/temples/wat-phra-that-cha-haeng.html



04

Wat Phra That Khao Noi

A short drive up the hill to see this 9-meter tall golden Buddha statue is simply a must for anyone visiting Nan. The raised platform overlooks the city down below. Take in the panoramic views and have a look round the ancient temple buildings and chedis within the same complex.

www.tourismthailand.org/Attraction/Wat-Phrathat-Khao-Noi--4259



05

Si Nan National Park

For the adventurous, head to Si Nan National Park where you can trek, camp or take an excursion up to 'Doi Sa-mer Dao' - a high mountain peak that affords stunning views across the river valley below. It's best seen in the morning; if you're lucky enough, wake up early to catch a rare glimpse of the 'sea of fog'.

www.tourismthailand.org/Attraction/Si-Nan-National-Park--4290





TO STAY

RECOMMENDED BUDGET HOTELS

Srinual Lodge

Offering a family-friendly atmosphere, Srinual Lodge is equipped with all the mod-cons you'd expect in any big city – and that includes room service. Popular landmarks like Wat Hua Wiang Tai Temple and Wat Phra That Chae Haeng are within walking distance, with a few local restaurants also by your doorstep, too.

Tel: 0-5471-0174



Shanti Retreat

Modern, well-equipped rooms that follow a minimalist design concept is what Shanti Retreat is all about. A top choice of accommodation for those heading to Nan's central Pua District, near many of the town's main facilities.

Tel: 09-3140-4869



RECOMMENDED NEWLY OPENED HOTELS



NirvaNan House

Set within a stunning Northern Thai mansion and only opened in 2017, NirvaNan boasts a luxurious pool, modern design and contemporary rooms. Find it near the popular Wat Phaya Phou Temple.

www.nirvanan.com

Proud Nan Cottage

Less than 3 km away from Nan's small airport, Proud Nan Cottage is conveniently placed and super-modern. Their cute cottages come with comfy beds and fast Wi-Fi.

www.facebook.com/proudnancottage

PX122 DBEST Hotel

Situated in Nan's main town, this newly-opened hotel was once an old tobacco warehouse. As for the name, "P" stand for Prae (where the tobacco was shipped for sale) "X" stand for export, and "122" is a license number for selling tobacco. Expect a cool combination of vintage style meets modern luxury.

www.px122hotel.com

RECOMMENDED HOMESTAY/ LOCAL ACCOMMODATION



Srinaman Homestay

Located in Nan's Santisuk district, this homestay-style accommodation has just 5 rooms, all of which offer a slice of peace and tranquility that Nan is so well-known for. The friendly hosts are also on standby to show you around and give you some nifty travel tips.

www.facebook.com/srinaman.nan

RECOMMENDED RESORT

Cocoa Valley Resort

The name of this modern resort is derived from its chocolate theme that runs throughout (hope you have a sweet tooth), with chocolate tasting available on-site! Rooms here are some of the most stylish and well-equipped in the area, with flat-screen TVs and fast Wi-Fi.

www.facebook.com/cocoavalleyresort



RECOMMENDED OVERNIGHTS WITH LOCAL

Farmer School, Sila Phet Sub-district

Get back to nature with a stay at this remote accommodation, translating literally into "Farmer School". The homestay provides comfortable wooden houses in which to sleep and relax, while you learn all about the agricultural-centric way of life in the surrounding village.

Tel: 08-9999-7737



RECOMMENDED HOSTELS



C&C Nan Hostel

For friendly service, clean rooms and very affordable prices in town, C&C Nan is a top choice. They also have an excellent on-site restaurant, meaning you don't have to venture too far afield when hunger strikes.

www.facebook.com/CandCHostel

Yindee Travellers Lodge

This new hostel in the center of Nan impresses with an industrial-loft design and rooftop area perfect for evening BBQs. Choose between their spacious private rooms or more affordable shared dorm rooms.

www.facebook.com/YindeetraVellerslodge





TO SEE

📍 CULTURAL ATTRACTIONS

01

Bo Kluea Salt Mountains

Bo Kluea is a quaint little village situated in the valleys of north-east Nan. Translating into 'salt well', it comes as no surprise that the main attraction here is the village's huge stockpiles of salt, with the mineral being dug up from reserves deep underground.

www.mychiangmaitour.com/bo_klua_county



02 Ancient House of Cha Manat and Huean Ban Suksan Chuen Museum

Once an ancient pottery production site, today visitors can check out the old kilns dating back over 500 years. Take a wander through the combined museum and traditional house elevated off the ground on wooden stilts to get a sense of what life was like all those years ago.

Tel: 0-9853-3185



03 Tai Lue Way at Ban Rong Ngae

Discover the Tai Lue way of life with a look around this quaint hill tribe community. Surrounded by the lush green rice paddies, at Ban Rong Ngae you can shop for locally-made textiles and fabrics, as well as check out the traditional wooden homes of the friendly Tai Lue people.

nawatwithi.com/en/tai-lue-way-of-life-at-ban-rongngae-tambonworanakhon-amphur-pua-nan



01
Bo Kluea
Salt Mountains



02
Ancient House of
Cha Manat and
Huean Ban Suksan
Chuen Museum



03
Tai Lue Way
at Ban Rong Ngae

04

Wat Phuket

For visitors to Nan, this temple's main attraction is the impressive viewpoint from the top (save your energy to climb the stairs). The grounds also offer basic housing where visitors can stay, while adhering to the strict temple rules.

www.touronthai.com/en/article/1144



05

Ban Na Sao Samakki Museum

Another top place to learn more about Nan with a focus on the local Na Sao community, this traditional teak house is where you can inspect important antiques and ancient treasures. Items are arranged into five learning zones: Archaeology, Religion and Beliefs, Musical instruments, Life of the Nasao community, and the 'Hot Kitchen Room'.

www.museumthailand.com/th/museum/Wat-Bannasao-Samakki-Museum



06

Tai Lue Village Ban Nong Bua

The "Tai Lue" represents the most famous of all hill tribe people in Nan and surrounding Northern Thai provinces. This is the biggest of their buildings in the region and today it's open to the public to learn all about Tai Lue fabric-making, including signature tribal patterns and materials.

www.tourismthailand.org/Attraction/Thai-Lue-Village-Ban-Nong-Bua--4307

07 Wat Phaya Wat

Nan is hardly short of ancient temples to explore, but Wat Phaya Wat is one of the most interesting, especially once you learn about its history. The main pagoda is constructed with laterite brick in the Sukhothai style while the large temple hall is the place to head to pay your respects to Buddha, or just for some quiet contemplation.

www.renown-travel.com/temples/wat-phaya-wat.html



08

Nan National Museum

Familiarize yourself with Nan's fascinating past at this museum, which is housed in a European-style building from the King Rama V era. Exhibits and artifacts offer an insight into the province's history, with a focus on culture and lifestyle of its peoples.

www.museumthailand.com/en/museum/Nan-National-Museum



09 Wat Phra Kerd

Granted royal status in 1838, this sizeable palace complex is home to a mix of pretty, traditional houses, spectacular temple halls, shrines and Buddhist monuments. If you have time, take a look around the on-site museum that houses ancient Lanna items.

www.lovethailand.org/travel/en/6-Nan/12497-Wat-Phra-Kerd.html

10 Wat Ton Laeng

A wonderful 400-year-old Thai-Lanna temple, this building was constructed in the early Tai Lue style that originated from Xishuangbanna. From the outside, notice the temple's impressive three-tiered sloping roof, a characteristic that many traditional Tai Lue houses share.

www.renown-travel.com/temples/wat-ton-laeng.html



01 Doi Phu Kha National Park

Comprising three different types of forest, namely mixed deciduous, dipterocarp with oak and hill-evergreen forest, Doi Phu Kha National Park is packed full of interesting things to see and do. The highlight, however, has to be the park's highest mountain peak at almost 2,000 meters above sea level – a challenge even for experienced trekkers.

www.tourismthailand.org/Attraction/Doi-Phu-Kha-National-Park--4303



02 Nong Nam Khrok

Discover more about Nan's main industry – farming – at this sustainable agricultural tourism destination. Get your hands dirty as you become a farmer for the day and check out the flower garden plots.

Tel: 0-5452-1127

03 Wang Sila Lang

Nan's very own (little) Grand Canyon, Wang Sila Lang was formed over millions of years of erosion along the Pua fault line. The river gorge is a pretty sight, and in the winter (when water levels are low) you can even walk across.

Tel: 0-5479-2098



04 Doi Sa-mer Dao (Srinan National Park)

You'll find no better place in Nan to catch the sunrise and, depending on the weather, a stunning sea of mist blanketing the rolling hills and river that cuts through the valley below. Not an early bird? Then head up to the summit of Srinan National Park in time for sunset or camp out beneath the stars.

www.nationthailand.com/breakingnews/30331842



05 Sao Din Na Noi (Hom Chom)

Head to Sao Din Na Noi to see some rather strange soil formations; geological evidence suggests that they were once covered in water 10,000 – 30,000 years ago, formed as the Earth's crust shifted. A viewpoint looks over the unusual patterns, as well as the Nan River flowing through the national park.

www.tourismthailand.org/Attraction/Sao-Din-Na-Noi-or-Hom-Chom-and-Khok-Suea--4293



01 Wat Rong Ngae

Thought to have been built around 1767 A.D., what's most notable about Wat Rong Ngae is its remarkable three-tiered roof which is finished with wooden tiles (Pan Kled). The attention to detail is something special, with intricate carvings depicting Buddhist images found inside and out.

www.chimburi.com/thai803.htm



02 Rim Nan Art Gallery

This private art gallery is one of the best of its type in the province. The multistory buildings here display works from both well-known Thai artists as well as student exhibitions from local universities. A must-see in Nan for art lovers!

www.tourismthailand.org/Attraction/Nan-Riverside-Art-Gallery--4253

03 Rangsri Kasem Building

The Rangsri Kasem building follows a distinct colonial style and dates back to more than 100 years. Take a leisurely stroll through this living museum, with a few interesting exhibits providing information about the house and other well-preserved rooms.

Tel: 0-5471-0306



04 Wat Nong Bua

A classic temple constructed by local Tai Lue craftsmen, one of Nan's most prominent ethnic groups that migrated to the region hundreds of years ago from southern China. Elaborate carvings, colorful murals and paintings all help differentiate this temple from anything you'll find in the south thanks to its distinct style. Definitely bring your best camera out for this gem of Nan!

www.tourismthailand.org/Attraction/Wat-Nong-Bua--4306

05 Hong Chao Fong Kham Old Lanna Thai House

This beautiful, 200-year-old building complex is steeped in history. A fine example of classic Lanna (Northern Thai) architecture, the "Noble House" has picked up numerous awards including the Conservation Building Award, outstanding architecture Housing type (Khum Chao) in 2012 from the Association of Siamese Architects.

www.mychiangmaitour.com/hong_chao_fong_kham





TO DO

WORKSHOPS / ACTIVITIES

Chocolate Bar Making @ Cocoa Valley Resort

This Nan hotspot boasts stylish accommodation and cafe specializing in all things chocolate-lovers. Out back, you can even try planting cocoa seeds and make your own chocolate bar. Certainly an eye-opening experience for those who never knew where their chocolate comes from!

www.facebook.com/cocoaalleyresort

Learn about Village Life and the "Geisha" Coffee Plantation @ Ban Manepruek

Thanks to its temperate climate, coffee has become a big business in the hills of Northern Thailand. Visit this plantation to see how the beans are cultivated and turned into your favorite morning pick-me-up. As well as tasting the signature Geisha coffee, you can learn about the local way of life in this remote hill tribe village.

Tel: 06-2248-5018

Learn about Village Life @ Nam Muap Village

Surrounded by the imposing Luang Pra Bang mountains, a trip to the quaint Nam Muap village is highly recommended for fans of Lanna food. A guide can show you the best places to eat where you can also learn about the ingredients and recipes of some of the dishes - all while admiring the incredible scenery.

www.welovelocal.travel/en/gastronomic-village-en/3956

Tram Tour through Nan

Nan's daily tram tour makes sightseeing around town easy. Just 30 baht per person, the tour takes you to see Nan's must-see temples and tourist spots. It departs from the town's main tourism office (opposite Wat Phumin) at 10.30 A.M. and 3.30 P.M. every day. Private tours are also available.

Tel: 0-5452-1127

"Ta Kong" Blanket Workshop @ Ban Na Sao

The province has long had a thriving cotton industry thanks to the cooler areas up in the hills; learn more about how blankets and other garments are made under the guidance of a local expert who will show you how to spin, thread, dye and weave cotton as part of this useful workshop.

Tel: 08-6190-5022



First: Chocolate Bar Making @ Cocoa Valley Resort
Second: "Ta Kong" Blanket Workshop @ Ban Nasao



LIKE A LOCAL

Morning market in Nan city of Tang Jitusanan Market

For fresh produce and a few pre-cooked snacks, like the north's famous chili paste, Nan's morning market is the place to go - if you can wake up early enough. Walking distance from most centrally-located hotels and guesthouses, Tang Jitusanan is a bustling market - yet still retains a calm atmosphere with a refreshing morning breeze.

Tel: 09-0081-1296

Farmer School Homestay

Nan's popular "Farmer School Homestay" is exactly what it sounds like: experience life as a farmer with modest accommodation and a few other agricultural-based activities available.

www.facebook.com/homestayfarmerschool



RELAXING



Chicken Coop Spa @ Ban Nawarat

Here's a spa with a difference! Submerge your whole body (apart from your head), in these 'chicken coop-style' incubators. The special treatment uses a combination of herbs and aromas (like ginger, galangal, lemongrass, bergamot, tamarind, and thorns) to help with weight loss and invigorate your skin.

www.thailandee.com/en/visit-thailand/chicken-coop-spa-nan-414

Risasinee Spa & Resort

Enjoy some well-earned time off your feet and take your pick from Swedish Massage, Thai massage, body scrubs and other treatments at Risasinee Spa & Resort. You'll also find a steam room with aromatherapy available, too.

Tel: 08-4433-5433

INTERESTING WALKS

Nan Night Market

In any Thai town center you'll find a bustling night market, but Nan's very own is made all the more special thanks to the locally-made goods on sale - and none of the usual tacky stuff. Many of these products are OTOP, so you know you'll be supporting local households with every purchase.

www.thailandee.com/en/addresses-nan/nan-week-end-nightmarket-nan-4387

Village life at Bo Kluea

Located over 100 kms from Nan's main town (showing just how large this province is), a walk through Bo Kluea will let you discover the piles of salt this village is famous for. Stop off along the way for lunch, see local craftsmen at work and pick up some OTOP souvenirs to take home.

www.thailandtriptour.com/thailand-interesting-bo-kluea-village-in-nan.html





TO BUY

RETAIL

Doisilver Factory

With over 70 years of experience in making stunning silver products, a visit to this factory not only lets you purchase high-quality jewelry right from the source, but also provides an opportunity to see the silver being manufactured first hand.

www.doisilver-factory.com



© facebook.com/salasilver925

Sala Silver, jewelry items from J.Top Company one of the largest silver manufacturers in Nan



Jangtrakul Shop

A charming shop selling quality, handmade fabrics. Their bags, garments, purses, scarves and other items are affordably priced - and you'll also be supporting local businesses that produce these items in Nan.

www.facebook.com/Jangtrakul.nan



Pha Nan Buri Cloth Shop

Choose from a range of locally-made garments, including traditional Northern Thai dress for women, men's shirts and even baby's clothing. Lanna sarong cloth (dyed with natural colors) also proves popular - it's ideal to wear at home or on the beach when the need for comfort calls!

Tel: 08-8267-1965

Phufa Shop

With the aim of helping people in remote communities integrate with the wider society, Phufa Shop only sells items that have been made as part of Her Royal Highness Princess Maha Chakri Sirindhorn's Royal Initiative. This encourages locals to earn a supplementary income outside of harvest season (as in most rural areas like this, farming used to be the only source of income).

www.phufa.org

Sala Silver

Jewelry items on sale here come from J.Top Company, one of the largest silver manufacturers in Nan. Their in-house team can make personalized designs, too; just come in with an idea of what you want or rough sketch and they can pass it onto the factory to have it made while you wait.

www.facebook.com/salasilver925

SOUVENIRS

Native Woven Fabrics

One great way of supporting local and family businesses in Nan is to purchase some fabrics, which you can often see being woven before your eyes as you pass through each shop. You'll find styles unique to the region, and while the designs might be replicated elsewhere in Thailand, the quality can't be matched.

au.tourismthailand.org/Attraction/Local-woven-fabrics--7776



CRAFT

Tai Lue Weaving Group Aunt Lhom Shop

Pick up some locally-made fabrics, which are expertly woven by the Tai Lue people who emigrated to Thailand hundreds of years ago. Garments here include traditional Thai dress, as well as colorful blankets and scarves.

Tel: 08-1180-2964



LOCAL MARKET



Top: Pa Klang Hill Tribes Development Housing, the place that offers you an insight into life in this rural part of Nan
Bottom: Kad Khuang Mueang Nan Walking Street, the must visit 'walking street' market in front of popular Wat Phumin

Kad Khuang Mueang Nan Walking Street

Find this must-see 'walking street' market in front of popular Wat Phumin every Friday, Saturday and Sunday. Each evening, the streets are closed off to traffic, allowing local vendors to set up shop selling everything from snacks and desserts to OTOP handicrafts, artwork and fabrics.

www.mychiangmaitravel.com/kuang-mueang-nan

OTOP Center

Following the OTOP government initiative (which stands for "One Tambon (or 'sub-district'), One Product"), this is one of the most comprehensive collections of shops in Nan where you can pick up souvenirs like woven fabrics, silverware, baskets and dried snacks to take home.

Tel: 0-5471-1739, 08-4608-0958

Pa Klang Hill Tribes Development Housing

Located in Nan's fascinating Sila Sub-district (almost 70 km from the town center), Pa Klang Hill Tribes offers a wonderful insight into life in this rural part of the province. A highlight is the daily market where you can purchase handmade accessories, colorful clothes and plenty of tasty snacks.

Tel: 0-5479-2098



SECTION 01

NAN

TO EAT

STREET FOOD

Aunt Nim Dessert

Open daily (apart from Wednesdays), this is one place to look out for on your visit to Nan if you have a sweet tooth. It's all about classic northern Thai dessert here, but the most popular choice has to be the mango sticky rice ice cream or rice balls in sweet coconut syrup.

www.thaifoodandtravel.com/blog/auntie-nim-dessert-shop-nan

Crazy Noodle

Head here for soft yellow egg noodles which are served up in a hearty pork bone broth, with a choice of meats and dumplings to complete the dish. Large bowls cost just 50 baht!

Tel: 09-8663-2895

Khao Kaeng Wanda

Khao Kaeng Wanda specializes in Northern Thai curry with 20 types to choose from. Sweet, sour, spicy and salty – this is the sort of place you simply need to point at what looks good – and try as much as you can manage! The highlights, however, have to be the Nam Ngao noodles, Khao Soi and pork satay.

Tel: 09-0323-6355

Top: Aunt Nim Dessert, the must visit place if you have sweet tooth.

Bottom: Khao Kaeng Wanda



© pantip.com



FINE DINING



© jatiwpanai.com



© jatiwpanai.com



© idtpgoda.com



Top & Middle: Suriya Garden, the restaurant that delivers you an exceptional dining experience.

Bottom: Huean Chao Nang, the restaurant that features classic Thai and Western dishes.

Suriya Garden

With its airy dining room featuring floor-to-ceiling windows surrounded by greenery, Suriya Garden delivers an exceptional dining experience - almost like sitting in a large-scale greenhouse. The menu here combines regional delicacies with fresh, locally-sourced produce and has been tipped as one of the best places for dinner in Nan by both locals and tourists.

Tel: 0-5471-0687

Huean Chao Nang

Riverside dining at its best, Huean Chao Nang is easy to reach from many of the city center hotels, thus making it a popular choice for both tourists and locals. Their large menu features classic Thai and Western dishes, but ask for their regional specials to get an authentic taste of Nan - with fried fish being our recommendation.

www.hueanchaonang.com



Top left, Top right: Ban Tai Lue Cafe, the best to find a seat and look across the endless rice paddies with the mountains far in distance.

Bottom left: Cafe Soodgong-dee, the riverside spot to sip your coffee next to Nan River.

Bottom right: Nor Nan Cafe, the instagram-friendly venue that serves up traditional dessert and some savory options.

Ban Tai Lue Cafe

Taking its name from a local hill tribe of the area, cafes don't come with views much better than this. Order your coffee or tea and find a seat in an open-air pavilion that looks across the endless rice paddies with the mountains far in the distance. The best time to visit here is during the rainy seasons when the fields are at their greenest.

www.tielandtothailand.com/coffee-rice-fields-cafe-ban-tai-lue-cafe-nan

Cafe Soodgongdee

Sip your coffee at this lofty cafe perched over the Nan River. The counter serves up fresh hot and cold drinks alongside a few sweet snacks during the daytime. The balcony space also doubles up as a place to chill with some drinks at night - a cool riverside party spot!

www.facebook.com/CafeSoodgongdee

Hormmcaffe

Easy to reach in the middle of Nan's sleepy town center, Hormmcaffe provides an equally laidback air-conditioned space to sit, chill and sip on freshly brewed coffee made from locally-sourced beans.

www.facebook.com/Hormmcaffe

Nor Nan Cafe

Part cafe, part restaurant, this Instagram-friendly venue is situated in an old wooden house. As well as a range of hot and cold drinks, the cafe serves up traditional desserts, like banana ice cream, and some savory options such as their delicious cheesy bread.

www.facebook.com/nor.nan.lanna



Mitr Banterng

Another popular nightlife choice for locals and tourists alike, this spacious venue has live bands every night. It's simple, no-thrills but the airy space promises a friendly atmosphere, cheap prices and good music... what more could you ask for?

Tel: 08-5622-1235,
08-5622-1235

Sawana @ Kat Nan

Normally welcoming local university students who come to drink at night, tourists are more than welcome at this alfresco bar, which can get pretty busy on the weekends. You won't find fancy cocktails here: think more beer and whisky, with a local band adding to the fun.

Tel: 09-8746-7390

We' Loft

One of Nan's best-known live music joints, We' Loft showcases the best local rock and indie bands every night of the week. Drinks are cheap and they also run a menu of classic Thai pub snacks and a few western dishes to soak up the alcohol!

www.facebook.com/Welofman

Nan Tawan

This healthy restaurant is located within a 'smart farm' that uses the latest agricultural innovations (without chemicals) to grow delicious produce - much of which goes into their menu. Find a seat outside to enjoy the views across the water.

www.facebook.com/nantawanfarm



VEGETARIAN

Ban J Vegetarian Restaurant

Tucked away down a small soi (alley), Ban J is the place to head if you want to try authentic tasting of Northern Thai cuisine - just without any of the meat. Many of their dishes are vegan-friendly, too.

Tel: 08-5164-2354





SECTION 01

NAN

HOW TO GET THERE?

Located over 650 kilometers from Bangkok, Nan is not the easiest of places to get to in the country. However, the long trip north is well worth the time and effort if you are coming by road, while the city's small airport does receive a few flights each day from Bangkok.

BY CAR



Most of the route is relatively straight and the highway heading north is good quality, but your overall journey time won't be much quicker than taking a bus, at around 8.5 hours.

BY TRAIN

Services run from Bangkok's Hua Lamphong Station north, with the closest stop to Nan being at Den Chai, Phrae Province (7 hours).

You'll then need to swap the train for a bus and complete the rest of your journey via the highway (another 2.5 hours).



BY BUS

A number of large bus operators have daily services from Bangkok's Mo Chit Bus Terminal to Nan. The journey can take almost 10 hours, so traveling overnight is advisable.

Alternatively, get a bus from nearby Chiang Mai or Chiang Rai for a shorter trip (although the roads are twisty).

BY PLANE

Thai AirAsia run three flights per day from Bangkok (Don Mueang Airport) taking just over an hour.

You can also catch the once-a-day Cessna flight from Chiang Mai.

GETTING AROUND

Once you're there, getting around Nan is your next problem to solve. Luckily, local buses head to all corners of the province from Nan's main bus station. For those with a valid international driving license, hiring a car may be your best option when traveling long distances.

It's much easier to get around the town center, with songtheaws, trams and private taxis available. Or simply rent a bicycle!



The most popular time to visit Nan is around November to March as the weather is cooler and dry.

BEST TIME TO GO

Nan is great to visit all-year-round, although you may want to avoid August, which is the wettest month.

November to March tends to be the most popular time as the weather is cooler and dry. During rainy season, most of the time you can expect short, sharp showers in the evening rather than prolonged rainfall all day long.



SECTION 01

NAN

SUGGESTED ITINERARY

DAY 01

☀️ 9.00 A.M.

Meet at Nan's small airport and head straight to see one of the town's most impressive attractions: the spectacular Wat Phumin. After exploring the temple inside and out, check out some of the other temples and sights dotted around the surrounding old town, learning about the province's history as you go.

10.30 A.M.

Take advantage of Nan's excellent (and very cheap) tourist tram service to explore the rest of the old town. The tour takes around an hour in total, so you'll be back in time for lunch!

☀️ 12.00 P.M.

Tuck into some local-favorite dishes for lunch, like tom yum soup or egg noodles with beef or pork. Leave some space for afters, though, as you'll be heading to "Aunt Nim" to try some traditional Thai desserts.

1.00 P.M.

Back on the road as you leave Nan's town center for "Pua" a picturesque rural district around 1 hour away. Along the way, stop off and check out an art gallery next to the Nan River.

☀️ 4.00 P.M.

Travel to Wat Phra That Beng Sakat (temple), wander around the various Buddhist halls and take in the view that stretches across the fields all the way to the mountains.

5.00 P.M.

Check in at your hotel in Pua.

🌙 6.00 P.M.

Browse the main night market in Pua, with plenty of delicious Northern Thai food and snacks to try as you stroll past the rows of stalls.

7.00 P.M.

Free time: head back to the hotel or stay out to enjoy the night market.



DAY 02



☀️ 7.00 A.M.

Wake up in time to see the early morning market where you can buy local snacks, fresh produce and soak up the peaceful morning atmosphere.

8.00 A.M.

Onwards to Cocoa Valley for breakfast (if you still have room after your browse through the market!)

9.30 A.M.

After breakfast and refreshments, take a stroll through the venue's very own cocoa garden, collecting cocoa beans from the trees as you go. Staff are on hand to give you a taster of the fresh cocoa and you can also join the cocoa processing with the villagers. Finally, you'll have the chance to make your own chocolate bar - under the guidance of a local expert, of course.

11.30 A.M.

Learn about the local Tai Lue people as you dress up, help with cooking lunch and then enjoy these hard-to-find dishes inside a traditional Tai Lue home.

☀️ 1.30 P.M.

Time to burn off the morning's calories with a walk around the surrounding rice fields and then up to the viewpoint at Phuket Temple. After checking out the view, head back down to a Tai Lue village and learn about fabric weaving.

2.30 P.M.

Explore Nan's lush green rice fields, with the chance to refuel at Tai Lue Cafe shop - a superb place to relax, take in the views and sample some of Nan's high-quality coffee.

3.30 P.M.

Start your journey back as you depart for the airport, onwards to your next destination of choice.



 DESTINATION GUIDE

Nong Khai

*Quick Facts, 5 Unique Landmarks to visit, To Stay,
To See, To Do, To Buy, To Eat, How to get there?
Best time to go, Suggested Itinerary*





Phrathat Klang Nam

Wat Siri Maha Sangkatchai

The Great Serpent "Naga" Sculpture

Wat Lamduan

Wat Pho Chai

Sala Kaew Koo

Mekong River

Thai-Lao Friendship Bridge

Jommanee Beach

Nong Thin Public Park

Prap Ho Monument

Nong Khai Governor's House

Nong Khai Historical Museum

The Sadet Market

Indochina Market

Chayangkul Rd

2

242

233

Nong Khai Railway Station



SECTION 01

NONG KHAI

QUICK FACTS

Despite its remote location some 630 kilometers north of Bangkok, Nong Khai has long been a popular stop-off for travelers thanks to its close proximity to Vientiane, which sits almost directly opposite on the other side of the vast Mekong River.

But today, the laid back riverside town of Nong Khai and surrounding provincial area of the same name have so much more to offer than just a place to rest before crossing the border into Laos.

Much of the action features around the Mekong River, which is best-known locally for its annual 'Naga' fireball spectacle. Elsewhere, evening markets, waterside restaurants and laidback parks keep tourists busy, while the rest of the province boasts some eye-catching temples, waterfalls, traditional villages and plenty of adventure activities.



© tatcontactcenter.com



© bbqboy.net



SECTION 01

NONG KHAI

5 UNIQUE LANDMARKS TO VISIT

01

The Khong River Viewpoint,
Naga Square

An iconic landmark of Nong Khai, these two brightly-painted serpent statues make for a great photo-op, especially thanks to their strategic position overlooking the Khong River. Best seen at dusk as the sun sets and locals come out to exercise.



03

Wat
Pho Chai

Nong Khai's largest and most sacred temple, Wat Pho Chai is a real beauty and definitely worth visiting when in town. Don't forget to head inside the main hall (all are welcome – just remember to take your shoes off) to see the temple's multi-colored murals which give Wat Pho Chai its unique identity.

www.tourismthailand.org/Attraction/Wat-Pho-Chai--3605

02 Sala
Keoku

The longest one of the top tourist attractions of Nong Khai, Sala Keoku is a weird and wonderful Buddhist and Hindu park spread over a 10 km range site. The garden is full of mythical statues, some of which stand over 25 meters tall, all built in honor of various religious gods and images. There's also an on-site cafe and entrance is just 20 baht.

www.bbqboy.net/visiting-amazing-sala-keoku-nong-khai-thailand

04

Wat Pha Tak Suea
& Skywalk

A short drive out of town, the mountainside Wat Pha Tak Suea has started to welcome a huge influx of visitors thanks to its spectacular new attraction: a glass-floor "Sky Walk" perched 500 meters above the ground. If you're brave enough, walk around the loop and admire the stunning panoramic view over the Mekong into Laos.

www.thailandtourismdirectory.go.th/en/info/attraction/detail/itemid/1200



05

Tha Sadet
Pier Market

This small learning center makes for an interesting stop-off when browsing through the popular Tha Sadet Pier Market – a favorite with locals and tourists looking for some evening bargains next to the river. The center has a few exhibitions and materials useful for learning more about the history and culture of Nong Khai.

www.museumthailand.com/en/museum/Market-harbor-tours





TO STAY

RECOMMENDED BUDGET HOTELS



Mekong Guesthouse

With just 15 rooms, Mekong Guesthouse delivers a private, cozy accommodation experience in a building styled as a traditional Thai house. It's also a great base for exploring Nong Khai's sleepy town center, with the popular Tha Sadet pier market just a few steps away.

Tel: 0-4241-2899



Sang Kom Riverview Resort & Restaurant

Stunning Mekong River views are the highlight of this budget-friendly hotel. Rooms here are kept relatively basic, with modest balconies looking out over the water. As it's a little outside of the main town area, you can always dine at their excellent restaurant – ideal for peaceful early morning breakfasts or sundown dinners.

Tel: 06-3361-4562

RECOMMENDED HOMESTAYS

Si Kai Homestay

Certified by the Tourism Authority of Thailand, this unique accommodation experience lets you get an authentic taste of life in rural Nong Khai with local people. As well as the comfortable bedrooms, a host of activities are available too, like cruising along the nearby Mekong River, bike rides and nature expeditions.

www.nongkhaidiscovery.com/home/en/guide/view?id=1574

Homestay @ Ban Wang Nam Mok

This project was initiated in order to preserve this local community and bring in revenue from sustainable tourism. A flexible range of packages are available, with visitors able to stay in locals' homes, with all meals included and the chance to participate in activities like weaving, merit making, and trekking.

www.welovelocal.travel/en/highlander-village-en/4073



Ban Wang Nam Mok, the project was initiated in order to preserve this local community and bring in revenue from sustainable tourism.

RECOMMENDED RESORTS

Panlaan Boutique Resort Nong Khai

With a range of facilities, dining options and an impressive saltwater pool, Panlaan Boutique Resort is well suited for those staying in Nong Khai for a few days looking to treat themselves. Choose from nine types of rooms, all of which come fully-equipped with all the mod-cons you'd expect at a luxury resort.

Tel: 08-0408-7289

VANA Wellness Resort

Boasting a peaceful countryside location, VANA Wellness places emphasis on rest and relaxation - while the main attractions of the city are only a short ride away. Rooms here also come with their own private balconies, overlooking either the tranquil pool in the center of the resort or out across the rural landscape.

www.vanaresort.com

First: Panlaan Boutique Resort Nong Khai, well suited for those staying in Nong Khai for a few days looking to treat themselves. Second: VANA Wellness Resort, wellness places emphasis on rest and relaxation.



RECOMMENDED HOSTEL



Silsopa Hostel & The Good Days

Travelers on a budget will love the tastefully decorated and comfy rooms at Silsopa Hostel, as well as the convenient location close to the city. And if you don't fancy the walk, you can always hop on one of their free-to-use bikes and make the five-minute journey into Nong Khai on two wheels.

Tel: 08-2375-4598

RECOMMENDED HOTELS



Amanta Hotel Nongkhai

Amanta Hotel Nongkhai can be found in the city center close to the Thai-Lao Friendship Bridge, the route into or out of Thailand across the Mekong. Guests can expect modern rooms, all of which come with private balconies to enjoy the riverside views.

Tel: 0-4241-2899

Royal Nakhara Hotel and Convention Centre

One of the town's largest hotels, the Royal Nakhara feels like any international chain hotel you'd find in Bangkok – just for a lot cheaper. It has 80 well-appointed rooms and a long list of on-site facilities, including restaurants, bars and meeting spaces.

www.royalnakhara.com

Sofa Gallery Hotel

Another top hotel in Nong Khai next to the river, Sofa Gallery is housed in a small, renovated building with quaint northeastern touches throughout. Make sure to book early if you want to snap up one of their pretty river view rooms.

Tel: 0-4242-0689



TO SEE

📍 CULTURAL ATTRACTIONS

01

Tha Sadet Pier Market

Treat yourself to a fascinating dose of culture at this excellent learning center which makes a great stop-off when browsing through the popular Tha Sadet Pier Market—a favorite for locals and tourists looking for some evening bargains next to the river.

www.museumthailand.com/en/museum/Market-harbor-tours



01
Tha Sadet pier
Market



02

Wat Si Chomphu Ong Tue

Home to the venerable golden Buddha Statue, “Ong Tue”, and this temple is one of the standout attractions of Nong Khai. While the main Buddhist hall may be modest in size and appearance compared to others nearby, the 4 meter-high Buddha image is particularly impressive, dating back to 1562 (having taken 7 years to build).

Tel: 0-4232-5406, 0-4243-1418

03

Tampankrayo Village

Head to Tampankrayo Village to sample Nong Khai’s most famous culinary export: “Nam-nueng,” a type of wrap with veggies and pork with spicy dipping sauce. Here, you can also learn how to make them.

Tel: 0-4232-5406



02
Wat Si Chomphu
Ong Tue

03
Tampankrayo
Village





04

Nong Khai Museum

Get your dose of history at Nong Khai's namesake museum, which is housed in one of the neighborhood's most exquisite colonial-style buildings. Most of the exhibitions inside detail the interesting history of the region, particularly the war with Laos and through to the French Colonial era.

www.jonesynthailand.com/nong-khai/attractions/nong-khai-museum

05

Phra That Bang Phuan Temple

The highly sacred Phra That Bang Phuan is somewhat of a less-frequent tourist attraction of Nong Khai but nonetheless well-worth a visit. The tranquil, landscaped temple grounds are home to an impressive 35-meter-high bell-shaped chedi which is said to house the Buddha's relics – hence why it's such a highly-revered site for local Buddhists.

www.thailandtourismdirectory.go.th/en/info/attraction/detail/itemid/1195



06

Ban Chom Chaeng Village

Perfectly placed alongside the Mekong River, this sleepy village is where people flock to see the mysterious "Naga Fireballs" of Ban Chom Chaeng Community every October at full moon. There are also plenty of homestays to accommodate the influx of visitors, as well as nearby attractions like temples, markets and more.

Tel: 0-4201-3288, 08-1050-1136



07

Phon Phisai Museum

Set in an almost 100-year-old colonial style house, this interesting museum was selected to be one of four pilot cultural centres by the Ministry of Culture in order to commemorate the late H.M. King Bhumibhol and H.M. Queen Sirikit who visited and supported the Phon Phisai area during the flooding season. Inside, you'll find exhibits about local technology, art, photography and culture.

www.tourismthailand.org/Accessibility/Attraction/Chalermraj-Cultural-Center-Phon-Phisai-Museum--6947

08

Wat Hin Mak Peng

This pretty temple between Si Chiang Mai and Sangkhom sits on a mound jutting out of the river – easily spotted from afar with its high chedi rising above the water. Inside, there are a few interesting monuments and statues to check out, but do remember to dress politely.

www.tourismthailand.org/Attraction/Wat-Hin-Mak-Peng--3606



09

Ban Mor Village

Situated 60 km from Nong Khai's city center, this remote village offers a laidback rural escape with pleasant views across to neighboring Laos - which you can actually visit via the permitted area at Sri Chiang Mai. The village has plenty in the way of shopping too, with goods like pineapple paste, freshly caught fish, woven scarves, herbal balls, etc. all on sale.

Tel: 09-3429-9351

10

Baan Phrao Tai Homestay

For an authentic taste of life in Nong Khai (away from the main tourist area), head to Baan Phrao Tai where friendly locals can show you how they farm fish, weave with bamboo, manage livestock and even give you a traditional Thai massage.

Tel: 08-9570-9069



01 Ban Ton Chan Farmstay

Offering visitors the chance to stay on a fully functioning farm, Ban Ton Chan is worth a visit in its own right just to see its scenic green fields and bright yellow Jute flowers glistening in the light. Top tip: visit around 5pm in time for sunset to see the sky turn a pretty golden color.

Tel: 06-2936-5669



02 Nong Khai Aquarium

Head to Nong Khai aquarium to see a comprehensive variety of fish, sea life and water plants collected from around the region. The building also serves as an ecology and fishery research centre.

www.thailandtourismdirectory.go.th/en/info/attraction/detail/itemid/4479

03 Nong Thin Public Park

Find this peaceful park next to the pretty Wat Mee Chai Tung near Nong Khai's old train station. Here, you'll find a tranquil pond, shady trees and grassy areas ideal for kicking back at dusk after a long day of sightseeing.

www.jonesyinthailand.com/nong-khai/attractions/nong-thin-public-park-in-nong-khai



04 Piang Din Cave

Piang Din Cave is a must-see for adventure seekers, with its series of underground chambers and natural rock formations making this one of Nong Khai's most impressive natural attractions. The route can be tricky in places, so there are regulations in terms of when you can enter the cave.

Tel: 0-4232-5406-7

05 Than Thong Waterfall

Found in Nong Khai's Ban Pha Tang district, this 30-meter-high waterfall is best visited during the rainy season when the pool at the bottom fills up - ideal for swimming or just cooling off. The stream flows directly into the Mekong.

www.thailandtourismdirectory.go.th/en/info/attraction/detail/itemid/1198



06 Phan Khod, Saen Krai Grand Canyon Nong Khai

Best seen outside of the rainy season as the water level drops, Nong Khai's very own 'Grand Canyon' makes for an impressive photography spot. While nowhere near as deep as the original in the US, these rock formations are still cool spectacles, especially at dusk when the rocks shimmer in the golden sun.

www.nongkhaidiscovery.com/home/en/guide/view?id=420

07 Phu Huay Isan

Having grown in popularity in recent years, Phu Huay Isan sits atop a hill overlooking the hills of Northeast Thailand, with views stretching as far as the Mekong River. Trek up in winter early in the morning to see the mist hanging over the rolling landscape as the sun rises above the horizon.

www.thailandtourismdirectory.go.th/en/info/attraction/detail/itemid/21336



08 Wang Nam Mok Waterfall

The 30-meter-high Wang Nam Mok Waterfall is located slightly to the north of Wang Nam Mok village (where you'll find some excellent homestays) and 28 km away from Sangkom district. A short walk to the water unveils some spectacular cliffs, and a fresh-water basin perfect for a cooling dip when it fills up from June to October.

www.thailandtourismdirectory.go.th/en/info/attraction/detail/itemid/4072

09 Wang Bua Daeng

An iconic site of the province, Wang Bua Daeng comprises a 2,000-Rai lake that's home to thousands of brightly colored red-pink lotus flowers. Hop into a boat take a cruise along the water during blooming season, which is from December to February each year.

www.tourismthailand.org/Attraction/Wang-Bua-Daeng-or-Wang-Bua-Chomphu--7494



01 Baan Tuad Coffee House

One of the first cement buildings to be built in Nong Khai almost 100 years ago, this renovated building is now home to a stylish coffee house – but retains its unique old-world charm combined with contemporary art inside.

Tel: 09-1492-6969



02 Phra Sutham Chedi, Wat Aranyabanphot

Wat Aranyabanphot impresses with its sizeable Sutham Chedi, originally built as a tribute to the highly-respected Luangpu Rian Worapalo. Browse the peaceful temple grounds and head inside the main hall to admire the intricate murals lining the walls.
www.tourismthailand.org/Attraction/Phra-Sutham-Chedi-Wat-Aranyabanphot--3627

03 Phra That La Nong

This large pagoda towers over the Mekong River, set a little way back from the water's edge to escape land erosion. Phra That La Nong was originally constructed as a reminder of the long-lasting relationship between the people of Thailand and Laos.

www.tourismthailand.org/Attraction/Phra-That-La-Nongor-Phra-Tad-Klang-Nam--3631



04 Wat Noen Phra Nao Wanaram

Exhibiting a stunning Laotian style, Wat Noen Phra Nao Wanaram is reminiscent of many of Vientiane's best temples that sit just a short distance away across the Mekong. The grounds are surrounded by well-landscaped gardens and a lush forest – an ideal place for the temple's newly-opened meditation center.

www.watnoenphranao.blogspot.com

05 Wat Phrathat But

Believed to be home to the relic of Buddha's tooth, Wat Phrathat But features a bell-shaped pagoda constructed from bricks and amber measuring almost 20 meters in length. Get up close to see the miniature pagoda replicas adorning the main spire.

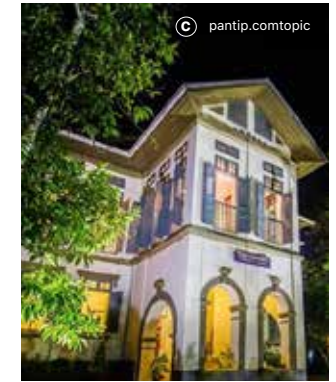
www.thailandtourismdirectory.go.th/en/info/attraction/detail/itemid/820



06 Nong Khai's Governor's Official Residence

This beautiful old colonial house was built during the administration of Phra Pratum Dheva Phiban and has since been turned into a free-to-enter museum, showcasing the history of Nong Khai and life of its past governors. Head up to the second floor to find a superb gallery documenting the late H.M King Bhumibol and H.M Queen Sirikit's royal visit to Nong Khai in 1966.

www.thailandtourismdirectory.go.th/en/info/attraction/detail/itemid/821



07 Wat Ko Soei Khet

One of the oldest temple chapels in Nong Khai, visitors are free to enter Wat Ko Soei Khet, which was built in a distinct Lan Chang architectural style.

www.temple-thai.com/nong-khai/wat-ko-soei-khet

08 Silpa Sopa

Once home to one of Nong Khai's richest and most powerful families, Silpa Sopa is a renovated 50-year-old house that's now open to the public as a combined gallery, art school, coffee shop and hostel.

Tel: 08-2375-4598



09 Wiwat Karnka

Built during the reign of King Rama VI, this building features a combination of three artistic styles: French, Chinese and Vietnamese. While still used as a house today, visitors can still stop by and take photos.

Tel: 0-4241-1550



TO DO

WORKSHOPS / ACTIVITIES

Naga Fireball Festival

Mythical serpent breathing fire? Swamp gas igniting and rising from the water? All a set-up to bring in tourists? While nobody is really sure what causes this annual phenomenon, which occurs on the evening of the last day of Buddhist Lent, one thing is for sure: this 'Naga Fireball' festival is well worth seeing if you're in town. Head to the riverside around Phon Phisai and Phon Phisai District for the best watching spots.

www.thaifestivalblogs.com/nong-khai-naga-fire-ball-festival

Phan Khod San Krise

Adventure seekers and photography enthusiasts put this one on your list: Phan Khod San Krise – an area of the Mekong that dries up in the summertime revealing some interesting rock formations and sandy beaches. Local tours of the area are available, taking in the main sites over the course of an hour.

www.nongkhaidiscovery.com/home/en/guide/view?id=420

Preserved Pineapple Workshop @ Ban Mor

The ancient Ban Mor community has survived the test of time thanks to its rice, pineapple and textile industries. Today, as more visitors come to Nong Khai and look to explore a little further afield, community workshops have been set up in this small but friendly village, including one where you can make preserved pineapple.

www.thailandtourismdirectory.go.th

First: Naga Fireball Festival

Second: Phan Khod San Krise, an area of the Mekong that dries up in the summertime revealing some interesting rock formations.



Red Lotus Lake

An iconic site of the province, Red Lotus Lake comprises a large pond that's home to thousands of brightly colored red-pink lotus flowers. Boat trips are available for just 100 baht for 5 people, which will take you across the water during blooming season from December to February each year.

www.pattayamail.com/thailandnews/tourists-flock-red-lotus-lake-nong-khai-200379

Sericulture Learning Center

Learn about local Northeastern wisdom and knowledge at this learning center, with an ever-changing range of exhibitions and workshops held to educate tourists about some of Nong Khai's main handicraft industries.

www.qsds.go.th/newqsscni/en/rule

Salted Egg & Nut Bar Making @ Ban Chom Chaeng

The 150-year-old Ban Chom Chaeng community is where you can find some of Nong Khai's best OTOP (One Tambon, One Product); now, with its recent influx of tourism, workshops have been set up for visitors to learn how to make some specialty foods, most notably salted eggs and caramelized nut bars.

Tel: 08-1050-1136



Ban Pak Som & Ban Lam Pupan Community

A stroll through the charming Ban Pak Som & Ban Lam Pupan Community will give you a real sense of what life is like in rural Nong Khai, with these villages open all-year-round to both local and international tourists. Recently, households have started to open up a selection of interesting workshops, including traditional rice noodle-making. www.thailandlocalgiving.tourismthailand.org/package/detail/3514

Ban Dua Community

Life in Ban Dua revolves around the river, and in recent years the community has opened up, welcoming visitors to learn more about local industries and culture. Take a boat tour to see how fishermen bring home their catch, check into a homestay, shop at the market and try some unique Isaan delicacies.

Tel: 0-4241-1182, 08-6953-9997



Ban Dua Community, let's take a boat to see how fishermen bring home their catch and check into a homestay.



Tampankrayo Village

Head to Tampankrayo Village to sample Nong Khai's most famous culinary export: "Namnueng," a type of wrap with veggies and pork with spicy dipping sauce. You'll notice the delicate, edible paper being dried in the sun along the route into the village, and these papers are exported all over the region.

Tel: 0-4232-5406

Freshwater fishing Village at Kong Nang District

This little village may seem small, but in fact the freshwater fish caught here are delivered all over Thailand, including as far as Bangkok. Head to the farm's main center area where you find a guide to show you around, as well as see how the relatively rudimentary contraptions are setup along the riverbed.

www.tourismthailand.org/Attraction/Freshwater-Fishery-Village--3599

Tobacco-making Village

See how tobacco is grown and processed at this laidback village. As well as taking a look around the main wooden plant, visitors can explore the small village and soak up the slow way of life amidst the rolling green countryside of Nong Khai.

www.tourismthailand.org/Attraction/Tobacco-making-village--3624



Nong Khai Walking Street

Organized in an effort to boost sustainable tourism, this once-a-week market along the riverfront sees hundreds of locals set up stalls selling crafted products, art, handmade clothes and regional delicacies. Find it every Saturday from 4 p.m. - 10 p.m. along the route stretching from Hai Sok Pier to Tha Sadet Pier.

www.thailandtourismdirectory.com/en/info/attraction/detail/itemid/822

Mekong Walking Street

As the name suggests, this scenic route is part of a new embankment project that runs 10 km along the banks of Nong Khai's mighty Mekong River. Popular for joggers, cyclists and other recreational activities, look out for the "Naga" statue in the middle of the square in front of Wat Lam Duan, one of the most famous spots in town.

Cliff Walk @ Wat Pha Tak Suea

A walk for the brave, the "Sky Walk" at Wat Pha Tak Suea is one of Nong Khai's newest and most popular attractions, and for good reason. The incredible views from the glass-bottom floor - which is perched 500 meters above sea level - look out over the town down below, across the Mekong into Laos and beyond.

www.thailandtourismdirectory.com/en/info/attraction/detail/itemid/1200

Tha Sadet Cultural Street

Tha Sadet is the biggest and most popular market in Nong Khai, just a short walk from many of the town's hotels and guesthouses. As well as a huge range of goods on sale, you can also expect live performances, music and shows.

www.tourismthailand.org/Attraction/Ta-Sadet-Market-903



*First: Nong Khai Walking Street
Second: Cliff Walk @ Wat Pha Tak Suea
Third: Mekong Walking Street*





TO BUY

☉ CRAFT

Natit Coffee and Crafts

A cafe-cum-coffee shop is located in the Tha Bor area of Nong Khai. Head inside and browse through their range of hand-crafted products including cotton bags, postcards, hats and other souvenirs, and don't forget to try their freshly brewed hot and cold coffee.

Tel: 08-8066-3690

Pha Khao Ma Weaving @ Ban Sawang Phatthana

This shop is enjoying a new lease of life after picking up an award for its products at International Expo in Ubon Ratchathani alongside several other participating countries, as well as recognition for its emphasis on OTOP.

Tel: 08-1872-7504,
09-0801-1027



First: Natit Coffee and Crafts, the cafe that let you browse through hand-crafted products. Second: Pha Khao Ma Weaving @ Ban Sawang Phatthana, an award winning shop for its products at International Expo.



☉ RETAIL



Bot Country

Supposedly the one and only 'handmade leather shop of Nong Khai', Bot Country sells a range of country-style leather goods in the center of town, from belts to bags, shoes and more.

Tel: 06-1932-8446

Mantra Nongkhai

A textile shop selling exclusively local-made fabric and designs, Mantra Nongkhai aims to develop the careers of young professionals, strengthen the community and work towards solving issues arising from migration into the region.

Line: *mantra.nk*

Sattapan

Established to support the region's fleeting number of traditional weavers, Sattapan specializes in a range of woven fabric-based goods including bags, clothes and souvenirs.

Tel: 08-9913-8888



First: Bot Country, the one and only handmade leather shop of Nong Khai. Second: Mantra Nongkhai, the exclusively local-made fabric. Third: Sattapan, the shop that specializes in a range of woman fabric-based goods.



Kamkong Market

In an attempt to boost sustainable tourism, this once-a-week market has been organized along the Mekong riverfront. Hundreds of locals set up their stalls, some of which are simply secondhand goods spread across the floor, with most selling hand-crafted products. The market runs Saturday from 4pm – 10pm from Hai Sok Pier to Tha Sadet Pier.

www.thailandtourismdirectory.go.th/en/info/attraction/detail/itemid/822

Tha Sadet Pier Market

Tha Sadet is the biggest and most popular market in Nong Khai, just a short walk from many of the town's hotels and guesthouses and also close to the river. As well as a huge range of goods on sale, you can also expect live performances, as well as shops and bars spilling out onto the street - especially on the weekends to accommodate the influx of tourists.

www.discoverythailand.com/Nong_Khai_Tha_Sadet_Market.asp

Thai-Laos Market

This unique market sees local Thais and Laotians from both sides of the Mekong come together to trade goods all under one roof. You can find it located within the special permitted zone situated between Thai-Lao territory every Tuesday and Saturday, with plenty of weird and wonderful produce on sale and available to all.

www.thailandtourismdirectory.go.th/en/info/attraction/detail/itemid/4402



First: Kamkong Market, famously known as Nong Khai Walking Street
Second: Thai-Laos Market



© matichon.co.th

Daeng Namnuang

Originating from Vietnam, these meat & veggie wraps are synonymous with the Northeastern region of Thailand, especially Nong Khai. You'll find plenty of shops around the center of town selling branded box sets – which make a perfect souvenir takeaway.

Tel: 0-4241-1961,
0-4242-1202, 08-1871-4577



First: Daeng Namnuang, the restaurant that originated from Vietnamese cuisine.



Chaeng Mae A-Rak Fried Bananas

For an edible souvenir that you can take home for friends and family, look no further than Mae A-Rak, a shop selling fried banana chips available in a range of flavors.

Tel: 08-6459-7892, 0-4244-1567



© tatcontactcenter.com

Ban Chom Chaeng Community Products

Venture into the highly recommended Chom Chaeng community to find an assortment of foods and souvenirs that'll make great gifts for your friends and family. These include salted-egg stuffed with dough, fermented and dried fish products and much more.

www.revolvy.com/page/Chom-



Maethuan

Another Nong Khai regional specialty, Maethuan sells authentic Vietnamese sausages that come highly recommended by locals thanks to their fresh, clean, and delicious taste. A variety of long-lasting packs are available.

Tel: 08-4435-5988

Traveler's Gift Set

Popular with international and local tourists thanks to its range of affordable hats, cloth bags, phone cases, tablet cases, scarves and more, with an easy-to-reach location not far from many of Nong Khai's hotels and guesthouses.

Wine De Nongkhai Chardonnay Malika (2011)

This local wine is considered some of the best produced in Thailand; expect a pleasant scent alongside a sweet, pomegranate-like taste that makes for a decent souvenir when heading back home.



T-shirt Souvenir at the Pier Market

For a reminder of your trip to Nong Khai, head to the bustling Pier Market to find a range of t-shirt souvenirs made from high-quality cotton and featuring locally-inspired designs by local artists.



SECTION 01

NONG KHAI

TO EAT

☉ STREET FOOD

Chim Chum Tai Saphan Restaurant

For some D.I.Y dinner, head to Chim Chum Tai Saphan where you can cook a variety of meats and vegetables in clay pots. The restaurant supplies the delicious, sweet and fragrant broth that boils away under the heat of the charcoal – all you have to do is cook your ingredients for a fun, typically Northeastern Thai-style dining experience.

Tel: 08-1277-8797

**Joke Chon Tong @Nongkhai**

Get your late night congee fix at this small shop tucked away down an alley next to Sa Ding Bar. The porridge-like rice is cooked in a rich broth and comes with minced pork or chicken.

Tel: 0-4242-3052, 08-6864-9775

Ma Ra Kor

Conveniently located in the city center on Mee Chai Road, this restaurant proves particularly popular with locals with its authentic Isaan (northeastern Thai) specialties. Look around and you'll probably notice every other table with at least one helping of som tam, the spicy papaya salad that comes with a variety of toppings.

Tel: 09-1861-2862

Mae Nang Khaopun Pu

A restaurant specializing in khanom jeen, which is a type of soft, white rice noodle popular throughout the north and northeast of Thailand. While the noodles are good, what really makes khanom jeen special is the variety of curries served alongside them, including clear crab meat and tangy fermented fish curry.

Tel: 0-4243-2437

Nong Khai Dessert Shop

Thai desserts may seem a little strange to the Western palette, mixing normally-savory foods with sweet flavors. But the result is surprisingly satisfying; head to 'Nong Khai Dessert Shop' if you don't believe us, and try some of their items like caramelized bananas or sweet sticky rice with logan and pumpkin in coconut milk.

Tel: 08-3454-5558

Thantawan

Start your day right with a Nong Khai-style take on a western breakfast at Thantawan. The shop serves pan-fried eggs sprinkled with minced pork or Chinese sausage. They also serve classic Vietnamese rolls, stuffed with different types of sausage, veggies and butter – the perfect morning snack to go with their freshly brewed coffee.

Tel: 08-1545-4464



☉ CAFES

Ban Tuad Coffee House

This renovated old shophouse now stands as a trendy, hipster-friendly coffee shop. Grab your drink and head up to the second or third floor, where you'll see most of the building's original fixtures have been well-preserved alongside some modern touches.

Tel: 08-3454-5558

Beyond Cafe at V Viang Lifestyle Mall

Beyond Cafe has an unusual range of caffeinated drinks and indulgent desserts, like blueberry cheese pie. The award-winning cafe is best known for its salted egg coffee... don't knock it till you've tried it!

Tel: 08-3454-5558

**Black Corner Coffee and Bistro**

Another trendy cafe in central Nong Khai, Black Corner Coffee and Bistro is recommended not only for its fresh coffee but also its tasty range of fusion dishes and sweet treats. With free Wi-Fi, comfy seating and friendly service, it's also a good place to catch up on some work.

Tel: 08-3454-5558

**Loft Cafe**

This modern cafe gets its name from its trendy loft-style design, providing an ideal space open throughout the day for socializing, working or just taking a break from the day's heat with an ice coffee.

Tel: 09-0023-3282

Na Ta Lad Tha Reau

Na Ta Lad Tha Reau proves to be one of Nong Khai's most popular coffee shops thanks to its location at Tha Sadet Pier Market. Its classic interior provides an interesting space to sip some Laotian coffee or Thai milk tea while you browse their souvenirs such as silk handbags, hats and ceramics.

Tel: 0-4241-2198

☉ VEGETARIAN

Fusion Veggie

This small shophouse is easy to miss, but well worth a try if you're a non-meat-eater. As the name suggests, they serve up Thai-fusion dishes using meat substitutes.

Tel: 09-7196-9654



☉ HALAL

Ma Riam Islam Restaurant

One of the very few places in town where all the meat is Halal friendly, Ma Riam proves a popular lunchtime spot for the town's small Islamic community, serving up delicious, and often quite spicy, Muslim curries.

Tel: 08-6866-4795





A-GAIN Restaurant

A-GAIN delivers a chilled restaurant atmosphere inside its air-conditioned dining room while the outside terrace is the perfect spot for some cool beers as the sun goes down beside the river. Live music kicks off later in the evening, making this a favorite hangout for locals and in-the-know tourists.

Tel: 08-8896-3997

Bangrak @ Nong Khai

For live music, cheap drinks and a friendly, local vibe, Bangrak pub is the place to head at night in Nong Khai. Located close to the river, choose between their beer garden-style outdoor area or head inside to find the main air-conditioned nightclub.

Tel: 09-6636-4244

Tao Nong Khai Shop

Known locally as just 'Tao', this roadside bar-cum-club keeps things simple in terms of décor and drinks, but delivers a friendly atmosphere with live music every night until midnight.

Tel: 08-8507-7981

Sanamsook

Another nightlife joint close to Nong Khai's Mekong River, Sanamsook draws in young crowds with live bands, cheap drinks (with beer or whisky sets being the drink of choice) and a range of Thai and Western-style pub snacks to soak up the booze.

Tel: 09-5598-7589



First: Bangrak @ Nong Khai, the place for live music, cheap drinks and a local vibe.

Second: Lan-Lai Na Nong Khai

Lan - Lai Na Nong Khai

More of a restaurant, this small venue in Nong Khai's Tha Bor district also makes a cool evening hangout with its impressive range of imported beers, ideal to go with one of their meat-centric pub meals or snacks like Teriyaki Steak or Fried Belly Pork.

Tel: 09-6636-6000



HEALTHY

Just Be

Get your protein, smoothie or coffee fix at this newly open cafe near Nongkhai Hospital. For something slightly less healthy, go for their stuffed toast served with a variety of sweet toppings.

Tel: 06-5712-1720

Varnorn Clean Food

Supposedly Nong Khai's 'first clean food restaurant', Varnorn serves a range of eat-in or takeaway dishes perfect for fitness enthusiasts, or just those watching their weight, including salads, low-fat milk drinks, whey protein and blended chicken breast. It tastes better than it sounds!

www.facebook.com/pages/Varnorn-Clean-Food/327120798015555



Ban Suan Prik

A good pick for fussy eaters, Ban Suan Prik serves a mix of classic Thai dishes and Western flavors. For the more adventurous, go for their spicy 'jungle curry' or stir-fried catfish, while those yearning for a taste of home can opt for some fried comfort food.

Tel: 0-4241-2444, 09-0289-5959

Daeng Namnuang Vietnamese Restaurant

A large-scale riverside restaurant, this eatery has long been popular with tourists thanks to its views across the water and authentic namnuang – Nong Khai's famous Vietnamese wrap. Each piece of the wrap (i.e. the thin paper sheets, lettuce, sausage, noodles and dipping sauce) is served to your table separately, giving you ample opportunity to hone your rolling skills.

Tel: 0-4241-1961

Khrua Khun Kao Restaurant

Famous throughout Nong Khai, what Khrua Khun Kao lacks in décor or style, it certainly makes up for in taste, serving some of the freshest fish and tastiest Thai food in town. River fish, spicy North-eastern-style salads, stir-fried dishes and soups make up the bulk of the menu.

Tel: 0-4241-2439

Ruenrimnam Restaurant

If it is sunset dinner views you're after, Ruenrimnam Restaurant on the banks of the Mekong should definitely make your shortlist. Arrive early (or book in advance) to secure one of their waterside seats, with views stretching across the water towards the Thai-Laos Friendship Bridge and into Laos.

Tel: 0-4246-5212

V.S. Fishing Park and Restaurant

This spacious venue is surrounded by a pool of water, making a tranquil setting to tuck into their range of fish-based mains and classic Thai dishes. If the heat (and mosquitos) gets a bit too much, head inside to find a table in one of their private air-conditioned dining rooms.

Tel: 08-6242-5914





SECTION 01

NONG KHAI

HOW TO GET THERE?

◎ BY PLANE



The closest airport to Nong Khai is at Udon Thani, with daily flights from Bangkok (Thai Airways, Nok Air, Thai Lion Air) all available.

From there, you will need to take a minivan or a private taxi to complete the final 50 km leg via the highway.

◎ BY CAR

From Bangkok, take Highway 1 (Phahon Yothin), pass Saraburi and switch to Highway 2 (Mittraphap), via Nakhon Ratchasima, Khon Kaen, Udon Thani, to Nong Khai.

The route is over 600 km and can take up to nine hours to drive.

◎ BY BUS

Air-conditioned buses from the Transport Company Limited and private bus services are available.

These buses depart from Mochit 2 Bus Terminal several times a day and take around 10 hours to reach Nong Khai.



◎ BY TRAIN



The State Railway of Thailand has a train service, both normal and express trains, available from Bangkok to Nong Khai every day, which takes about 12 hours to reach Nong Khai.

Sleeper bunks are available for the overnight journey, too.

◎ GETTING AROUND

Just like any other small city in Thailand, getting around can take a little planning if you don't have your own car. However, taxis and 'songtheaw' (converted taxi trucks) are available from the main bus station, while you may also see tourist-friendly tricycles and tuk-tuks making their way around town.

For any journey, always make sure you negotiate a price before getting in, and don't be persuaded to visit other places as the driver may well be taking you there just to receive commission. As a rule of thumb, a day's tour around Nong Khai in a songtheaw or tuk-tuk should cost between 1,000 and 2,000 baht - depending on how many stops you want.



BEST TIME TO GO

Unlike the South of Thailand (that can get very wet for long periods), Nong Khai remains generally hot and dry all-year-round. During rainy seasons, you can expect short, sharp showers in the evening - but this shouldn't put you off going.

Depending on your preferences, the best time to visit Nong Khai may revolve around its calendar of festivals and events, for example:

Bun Bang Fai Fair

Held in the sixth lunar month (May) every year, this festival sees contestants from all over the region build and launch their own homemade rockets into the sky near Wat Pho Chai.

Naga Fireball Festival in Nong Khai

Held annually in Nong Khai between October 10th and 16th, this festival marks the end of Buddhist Lent. As well as a range of riverside activities and shows, the main attraction here is the mysterious fireballs that rise into the night sky over the Mekong River.

Tak Bat Thewo and Thai-LAOS Friendship Boat Race

This yearly race in October is another popular event to mark the end of Buddhist Lent. Thailand and Laos both take turns to host the race which runs along a length of the Mekong River near the Thai-Laos Friendship Bridge.



SECTION 01

NONG KHAI

SUGGESTED ITINERARY

DAY 01



8.00 A.M.

Meet up and head out to Tantawan restaurant, a popular spot for some Thai-fusion breakfast dishes.

9.00 A.M.

Start the day's sightseeing trip with a visit to the Buddha Statue at Wat Pho Chai, one of the most famous temples in Nong Khai.

9.30 A.M.

Continue on to see Phu Kaew pavilion and then Phra That Lar Nhong temple to complete the morning's sightseeing session of the town.



12.00 P.M.

Lunch is served at Daeng Namnueng restaurant, where you can try the province's famous Vietnamese rolls.

1.00 P.M.

Three more temple stops to go after lunch, including Go Soey Ket Temple, Luang Phor Ahong Tue Temple (where you can pay respect to the Buddha Statue and make merit) and finally the impressive Hin Mak Peng Temple.



3.00 P.M.

Head out of town to check out the impressive cave system at Piang Din Cave Temple.

4.00 P.M.

Carry on up the mountain to reach one of Nong Khai's most spectacular attractions, the "Sky Walk" at Pha Tak Suea Temple. Walk along the glass-bottom floor and admire the panoramic views across the Mekong River below.



6.30 P.M.

Back to ground level in time for dinner at Khrua Khun Kao Restaurant. Enjoy free time with the chance to relax in the center of Nong Khai for the rest of the evening.

DAY 02



6.00 A.M.

Rise and shine early in time to make merit by offering food to the procession of monks making their way along the Mekong riverside route.

7.00 A.M.

Head back for breakfast.

8.00 A.M.

The Khong River Viewpoint, Naga Square for some cool photo-ops.

8.30 A.M.

Fireballs time!!

9.30 A.M.

Check out the still rural atmosphere and sights at Baan Ton Jan Farm Stay before heading onto Bann Due, a laidback village.



12.00 P.M.

Time for lunch

1.00 P.M.

Re-energize with a well-earned coffee (and maybe a cake) at Beyond Cafe.

2.00 P.M.

Stroll through Nong Khai's not-to-be-missed Tha Sadej market, with vendors starting to set up their stalls from around 4 pm.

4.00 P.M.

Time to say goodbye and onwards to your next destination – or carry on your adventure in Nong Khai!



DESTINATION GUIDE

Phuket

*Quick Facts, 5 Unique Landmarks to visit, To Stay,
To See, To Do, To Buy, To Eat, How to get there?
Best time to go, Suggested Itinerary*





Chino Town
Gallery Guesthouse



Thai Hua
Museum



Chino-Portugal
Architecture Building
(Krabi Road)

Bookhemian



Phuket Sunday
Night Market



The Memory
at On On Hotel



Chino-Portugal Architecture Building
(Phang Nga Road)



Chino-Portugal
Architecture Building
(Thalang Road)



Phuket Philatelic Museum



Phuket Trickeye Museum

Yaowarat Rd

Salun Rd

Krabi Rd

Dibuk Rd

Thepkrasatree Rd

Thalang Rd

Yaowarat Rd

Ranong Rd

Ratsada Rd

Bangkok Rd

Takuapa Rd

Phuket Rd

Thalang Rd

Phang Nga Rd

Montri Rd



SECTION 01

PHUKET

QUICK FACTS

As Thailand's largest and most famous island, Phuket draws in millions each year - mainly thanks to its enviable location surrounded by the Andaman Sea, which is perfect for island-hopping. Add to that dozens of exotic beaches, an attractive Old Town area, plus a huge range of adventure activities, and it's no wonder why Phuket has remained one of the world's most adored holiday destinations.

On the whole, Phuket is a family-friendly destination packed full of exciting activities and cultural experiences, most of which are well-suited for solo female travelers. With new government security measures in place, as well as a growing tourism-focused police force (staffed by both local and foreign volunteers), there has probably never been a safer time to visit Phuket.

The Old Town of Phuket was the first "UNESCO Creative City of Gastronomy" in the ASEAN region thanks to its vast range of cuisines reflecting a unique blend of Chinese, Malay, Indian and Thai influences. As well as cheap and tasty street food, Phuket has just welcomed the coveted Michelin Guide, with PRU Restaurant picking up one star - along with 12 Bib Gourmand awards island-wide.





SECTION 01

PHUKET

5 UNIQUE LANDMARKS TO VISIT



01

Mai Thon Island

Take a day trip to Mai Thon Island, a private island ideal for snorkeling with its colorful coral reefs and abundance of sea life. Think white-sanded beaches, clear water and untouched landscape – all just a 20-minute boat ride away from Phuket. www.lifeoutloudofficial.com/lol-go-koh-maiton-private-island-thailand

© thaitechno.net



© hotelsthailand.com

02

Peranakannitat Museum

Visiting the Old Town is a must when in Phuket, and one of the most interesting places here is the Peranakannitat Museum. Situated inside a renovated Sino-Portuguese building, once used as an old bank, the museum showcases the history of Phuket's Peranakan ethnic group.

Tel: 09-4807-7873

03

Big Buddha

For a taste of extravagant Buddhist art, there's only one place to start: Phuket's 45-meter tall Big Buddha. Head up Chalong hill in a red songtheaw and admire the incredible, marble-layered structure with sweeping views across the island. www.phuket.com/magazine/big-buddha-today.htm



© hotelsthailand.com



© residentadvisor.net

04

Mai Khao Beach

When it comes to beaches in Phuket, you're really spoiled for choice. But to escape the crowds and discover fine, golden sands, look no further than the incredible Mai Khao Beach. Located near the airport, this also a great spot for plane-watching as they come into land just meters above your head! www.phuket.com/island/mai-khao-beach.htm

05

Promthep Cape

Phuket's most Instagrammable viewpoint is found at Promthep Cape, which juts out over the Andaman Sea affording stunning island panoramas. At sunset, head up the hill (just follow the windmill) for the best vantage point. www.phuket.com/island/promihep-cape.htm





TO STAY

RECOMMENDED BUDGET HOTELS

Blu Monkey Hub and Hotel Phuket

Blu Monkey is perfect if you're looking for a fun and friendly hotel vibe-without any of the cramped dorms. Private rooms here are well-equipped and the hotel is packed full of cool facilities, including co-working spaces, a gym and pool.

www.blumonkeyhotels.com

O'nya Phuket Hotel

Taking its inspiration from Phuket's old Sino-Portuguese shophouses, O'nya proves the point that 'budgeting' in Phuket can still get you boutique-style accommodation - if you look hard enough. Expect simple facilities and a central location, close to the island's biggest shopping mall.

www.onyaphuket.com



RECOMMENDED NEWLY OPENED HOTELS



The Boathouse Phuket

When it comes location, it doesn't get much better than The Boathouse Phuket. This recently opened hotel has luxurious rooms, an award-winning restaurant and a swimming pool all looking out to sea, with the fine, white sand of Kata Beach just a few steps away.

www.boathouse-phuket.com

Hotel Clover

Escape the hustle and bustle of Patong, Phuket's busiest beach area, at the uber-stylish Clover Hotel. The highlight here has to be the rooftop swimming pool that affords wonderful views across the bay. You can dine and drink on this top level, too.

www.patongphuket.hotelclover.com

RECOMMENDED RESORTS

Avista Hideaway

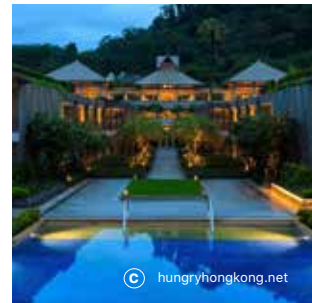
True to its name, this five-star boutique-style resort promises a peaceful location, situated atop Patong Hill with views stretching across two of western Phuket's most spectacular bays. Not one but three swimming pools, two restaurants and a rooftop bar all await.

www.avista-hideaway-phuket-patong.com

Phuket Marriott Resort and Spa

For five-star luxury, Marriott is a name you can trust. And among their portfolio of resorts across the world, you won't find many that are better placed than here at Nai Yang Beach. Expect a huge range of on-site facilities and a secluded beachfront location.

www.marriott.com/hotels/travel/hkmtmb-phuket-marriott-resort-and-spa-merlin-beach



Borbaboom Posthel and Hostel, a hostel with cozy rooftop pool and funky communal space.

Avista Hideaway, a five-star boutique-style resort promises a peaceful location.

RECOMMENDED HOSTELS

Vitamin Sea Hostel Phuket

Ideal for solo travelers, Vitamin Sea Phuket provides mixed and female-only dorms, as well as friendly communal spaces to meet other travelers on a budget. With its central Old Town location, most of the neighborhood's best cultural sights and shopping options can be reached on foot.

www.facebook.com/vitaminseahostelphuket

PAUSE Kathu

Forget cramped dorm rooms with hard beds and no privacy - PAUSE Kathu is a hostel with a difference, with ultra-comfy single beds in shared rooms, plenty of space for your belongings and an excellent communal area for socializing or working on-the-go.

www.pausekathu.com

Borbaboom Posthel and Hostel

Borbaboom offers a variety of well-appointed dorm and private rooms to suit a range of budgets. It's got its very own cozy rooftop pool, funky communal space (with a shared kitchen and TV) and boasts an awesome location right in the center of Phuket Old Town.

www.facebook.com/borbaboomphuket

RECOMMENDED HOMESTAYS



Nakamala Villas

Great for longer stays on the island, this cozy homestay-style accommodation is more like staying in a shared house - with an airy living room for kicking back, shared kitchen and communal dining space overlooking the garden.

www.facebook.com/Nakamalaresort



TO SEE

📍 CULTURAL ATTRACTIONS

01

Thai Hua Museum

An award-winning Sino-Portuguese building in Phuket Old Town, Thai Hua Museum offers a fascinating insight into the history of the island, its people and local industries. The space is a pleasure to peruse, with an open-air courtyard and wide hallways.

www.thaihuamuseum.com



01
Thai Hua
Museum



02

Peranakan Phuket Museum

Learn more about the Peranakan people of Phuket at this modern museum. An entrance fee of THB 200 gets you access to a range of interesting exhibits which showcase artifacts of the island – with English-speaking guides available.

www.peranakanphuketmuseum.com



02
Peranakan Phuket
Museum

03

Kathu Shrine

A small but highly-respected ancient Buddhist shrine in Phuket, this is the original home to the island's famous Vegetarian Festival. Admire the Chinese architecture from afar, or head inside to pay your respects to the Buddha images.

www.phuket.com/temples/kathu-shrine.htm



03
Kathu Shrine



04

Wat Phra Thong

The magnificent Wat Phra Thong temple is well worth a visit, located just a short drive north from the Old Town. Head inside to discover the temple's highlight – a huge, half-buried golden Buddha statue.

www.phuket.com/temples/wat-phra-thong.htm

05

Phuket Mining Museum

Let's take a look back at another side of Phuket's history at this tiny mining museum. With detailed models, sculptures and documentary evidence, the museum shows the harsh living and working conditions of the island's past laborers.

www.museumthailand.com/en/museum/Phuket-Mining-Museum_2



06

Wat Phra Nang Sang

Over 500-years-old, Wat Phra Nang Sang is believed to be the oldest in Phuket. It's also one of the most flamboyant, with color décor and a myriad of quirky statues dotted around the temple's grounds. Have your camera ready for this one!

www.phuket101.net/wat-phra-nang-sang



07

Wat Chalong

If there is one 'must-see' temple in Phuket, Wat Chalong has to be it. The main hall is just as grand and imposing as many of Bangkok's most famous temples, with worshippers coming here to pay their respects to the images of Buddha (open from 7 a.m. - 5 p.m.).

www.wat-chalong-phuket.com



09

Sang Tham Shrine

A wonderful landmark presenting Phuket's culturally diverse background, this colorful Chinese Taoist shrine is well worth a quick peek inside – especially if you're exploring the Old Town's narrow streets on foot.

www.tourismthailand.org/Attraction/Sang-Tham-Shrine--5464



08

Phuket Cultural Center

Perfect to escape the daytime heat, head into the excellent Phuket Cultural Center to learn all about the Southern Thai lifestyle – with exhibits detailing the history and culture of the island and surrounding region.

www.tourismthailand.org/Attraction/Phuket-Cultural-Centre--6339



10

Bukarom Mosque

Another reminder of how Phuket has welcomed an eclectic mix of cultures, races and religions, Bukarom Mosque stands proud as the island's main center of worship for the sizeable Islamic community here.

Tel: 0-7627-1096



01 Sirinat National Park

Home to some stunning beaches on the northwestern coast of Phuket, this national park plays an important role in the island's wildlife conservation efforts. The park has measures to protect mangrove forests, coral reefs and even turtles nesting on the beach.
www.tourismthailand.org/Attraction/Sirinath-National-Park--679



© pantip.com



02 Khao Rang Hill

This natural hill, not far from Phuket's Old Town, is where you can find some of the best views across the island. Along the way up, stop off for coffee or some lunch – and look out for the naughty monkeys swinging from the trees!

www.phuket.com/attractions/rang-hill.htm

03 Karon Viewpoint

Situated just off the island's main ring road (making it super easy to find), this lofty spot on the southwestern coast affords spectacular views across three bays. It does get a little crowded, so arrive early for the best photo-ops!

www.phuket.com/attractions/kata-viewpoint.htm



04

Bang Pae Waterfall

Phuket's most impressive waterfall is best seen during rainy seasons; a short trek through the jungle and you'll reach the modestly sized falls where you can swim or enjoy a picnic (there are a few local vendors) under the shade of the trees.

www.phuket101.net/bang-pae-waterfall



05 Layan National Park

This secluded corner of Phuket is a must-see area - particularly its expansive golden beach which has remained almost untouched and free of major development. Find shade under the palm trees, kayak around the shallow waters or take a long-tail boat to explore the mangroves.

www.phuket.net/360/beaches-places/parks/layan-national-park

01 Drawing Room

You'll find galleries galore in Phuket's Old Town. One of the most interesting of the bunch, especially for fans of modern street art, is Drawing Room. The gallery features an ever-changing collection of art hung from the walls on huge canvases created by local artists. www.lonelyplanet.com/thailand/phuket-town/shopping/drawing-room/a/poi-sho/1441328/357618



02 Chinpracha House

A glorious old Sino-Colonial mansion, Chinpracha House offers the chance to see how Phuket's elite used to live over 100 years ago. Browse through each room, many of which have been immaculately maintained with original furniture and decor. www.phuket.com/attractions/baan-chinpracha.htm



03 Nit Ja Silp Gallery

Head to Phuket's Boat Plaza to find this quaint gallery open to the public. The series of rooms host artworks, including photography and sculptures from a variety of local artists.
Tel: 09-4258-5599
E-mail: natni@nitjasilpphuket.com

04

Phuket Old Town

Phuket's 'city' is famous for its Sino-Portuguese and colonial architecture. Head along Thalang Road or Soi Rommanee to discover some of the most colorful and quirkiest buildings, with dozens of cafes, restaurants and bars along the way.
www.phuket.com/island/phuket-town.htm



05 Phuket Street Art

Another huge draw for visitors to the Old Town area is its vibrant street art scene. A 2016 initiative saw some of Thailand's most talented artists cover dozens of walls in colorful murals using paint and graffiti – making for some eye-catching Instagram shots.
www.windowonphuket.com/features/682/old-phuket-town-street-art

OTHERS

01 Baan Teelanka, The Upside Down House

For an alternative, family-friendly activity in Phuket, this quirky 'upside down' house might be worth checking out. And if you're wondering – this attraction is exactly what its name suggests: a house, just upside down!
www.upsidedownhouse-phuket.com





TO DO

WORKSHOPS / ACTIVITIES

Old Phuket Farm

Get back to nature (and maybe dirty your hands a little) at this agricultural tourism-based farm. Learn how crops are grown and harvested by the locals across the sizeable 25-rai plot of land. www.phuketemagazine.com/phuket-local-farm/?lang=en

Phuket Elephant Sanctuary

This sanctuary acts as a final resting home for abused and over-worked elephants. Instead of riding them or watching cruel shows, visitors can witness these magnificent beasts roam around, chain-free. Limited volunteer programs are available, too.

www.phuketelephantsanctuary.org/en



Coral Island (Koh He) Boat Trip

Situated just off Phuket's southern coast, a half or full-day trip to Coral Island is a favorite for snorkeling enthusiasts thanks to its clear waters and colorful reefs (hence the name). A real paradise island!

www.phukettoursdirect.com/coral-island-tours.html

Surfhouse Phuket

Fancy a surfing session but can't find any waves to catch? Then your solution is here at Surfhouse Phuket. Their double-lane wave machine is suitable for everyone, from beginners learning how to stand to the pros wanting to perfect their tricks.

www.surfhousephuket.com

Cooking class @ JW Marriott Phuket Resort

Start your culinary journey where any good Thai chef starts: browsing through one of the island's morning markets. Next, it's into the kitchen with Marriott's expert chef, who'll teach you some of the basic techniques and how to cook up a few classic Thai dishes.

www.marriott.com/specials/mesOffer.mi?marrOfferId=814362&displayLink=true

RELAXING

Cool Spa

Cool Spa offers a 'five sense' experience within an intimate setting – with just four spacious treatment rooms (which means it's always best to book in advance). The venue also boasts a private salon and a floating yoga deck – all of which enjoy panoramic ocean views.

www.coolspaphuket.com

Coqoon Spa, The Slate Phuket

Coqoon Spa takes its name from the luxurious cocoon-shaped pods dotted around the resort's tropical gardens. You can hide away inside one of these, relaxing with an invigorating deep-tissue massage in the middle of nature.

www.theslatephuket.com/spa



LIKE A LOCAL

Kathu Community Old Town

Phuket's Kathu people have called this island home for longer than anybody else. Today, marks of their ancient past can still be seen dotted around the Old Town with hidden street art - perfect for a photography session.

www.phuket.com/island/phuket-town.ht

Khanaen Community

For a taste of what it's like to live away from the touristy beaches, head into the rural Khanaen Community. This initiative has opened up a learning center where anybody is welcome to come and experience the local culture, lifestyle and food.

www.thailandtourismdirectory.go.th/en/info/attraction/detail/itemid/80190



INTERESTING WALKS

Bangla Road (Walking Street)

A walk up Patong Beach's infamous Bangla Road is not for the faint-hearted. But a visit to Phuket's nightlife epicenter still feels like a must-do island activity; alongside the raunchier bars (behind closed doors), you will find regular night clubs and plenty of cheap shopping options.

www.phuket.com/nightlife/bangla.htm

Thalang Road & Dibuk Road

Two of the Old Town's real gems, Thalang Road and the nearby Dibuk is where you can find the island's famous walking street market. You can also wander around in the daytime, stumbling across cute cafes, old architecture and trendy boutiques.

www.thenaiarn.com/exploring-dibuk-road-in-phuket-town-our-guide



Thalang Road & Dibuk Road, two of the old town's real gems where you can find Phuket's famous walking street.





TO BUY

☉ RETAIL

Paul Ropp

Bali-based designer Paul Ropp is all about hand-woven cotton, silks embroidered with that use traditional techniques and a myriad of colors. Find his Phuket shop located on Thalang Road.

www.paulropp.com

Phuket Island Shop

Expect quality fabric and cool, Phuket-themed prints at this popular T-shirt shop near the old town. Prices are cheap, too, so no excuses in not bringing home gifts for all of your envi-ous friends...

www.islandfurniture-phuket.com

Twinha

Translating to 'nostalgic' in English, Twinha is the place to go for modern, quality-made souvenirs. The shop's flamboyant inside décor also makes for a cool photo-op.

Tel: 0-7635-4424



☉ CRAFT



Ban Boran Textiles

For an affordable hippy-chic look - but with actual quality materials and design, Ban Boran Textiles is well worth a visit. Find it on the popular Yaowarat Road in the Old Town.

www.afar.com/places/ban-boran-textiles-phuket

☉ SOUVENIRS

Sino-Portuguese Architecture Gift Set @Pornthip

Take home a little slice of Phuket's iconic Sino-Portuguese architecture and design with a trip to this cute little gift shop. It's located next to the restaurant of the same name, which serves up tasty Thai food in the middle of the island.

www.phuketemagazine.com/creative-souvenirs/?lang=en

Tau Sor Piah Gift Set @Khunmaeju

Everybody loves sweet treats as a souvenir, and this small shop is where you can buy classic southern Thai candy and snacks, all neatly packaged up as gift sets, to take home to friends, family - or just eat on your flight home...

Tel: 0-7626-1555

E-mail: khunmaeju@khunmaeju-phuket.com



▲ *Tau Sor Piah Gift Set, Khunmaeju Shop. A southern Thai candy and snack that is neatly packaged, ready for you to take home to your family or your friends.*

☉ LOCAL MARKET



Lard Yai (Walking Street)

If you're in Phuket on a Sunday, don't miss out on the island's best market which takes over the Old Town's Thalang Road and surrounding lanes from 4 a.m.-10 p.m. Vendors and stalls line the streets, selling everything from handicrafts, artwork, clothes, trinkets & antiques, to accessories and, of course, lots and lots of food!

www.jamiesphuketblog.com/2014/06/sunday-walking-street-market-lard-yai.html

G-Market Walking Street

This night market is big on tasty street food and snacks. Running Sunday through Wednesday (from 4 p.m. onwards) in the Old Town area, make sure you come hungry so you can indulge in Thai-Chinese favorites - and squeeze in a bit of shopping too!

www.phuket.net/directory/shopping/g-market-at-phuket-grocery-lard-g

Chillva Market

For something a little different than the commonplace touristy souvenirs, checkout Chillva Market for its cool selection of vintage clothes, quirky antiques and cheap accessories. There's also a decent range of bars and local restaurants open Thursday through Sunday.

www.phuket.com/magazine/chillva-market-phuket.htm

Chao Fah Variety Market

Like a smaller-scale version of Bangkok's famous Jatujak Market, Chao Fah sees vendors set up makeshift stalls and even display their goods for sale on the ground, with a sizeable choice of fashion, antiques and accessories available at this interesting weekend market.

www.bangkokpost.com/travel/sightseeing/20452/chao-fah-variety-market-phuket



SECTION 01

PHUKET

TO EAT

☉ STREET FOOD

**Boonrat Dimsum**

To understand Phuket's diverse culinary scene, one has to explore its Chinese flavors, which have played a key role in shaping the island's cuisine today. For this, head to Boonrat dimsum, a long-running eatery serving up delectable Chinese-Thai plates.

www.boonratdimsum.com

Torry's Ice Cream

The perfect antidote to a warm daytime stroll around Phuket's Old Town, Torry's Ice Cream serves up premium ice cream to both locals and tourists alike in a pretty shophouse setting.

www.torrysicecream.com

Cha-tap @ Bangtao

Rotis are eaten all over southern Thailand, with these flat, slightly sweet breads being a staple street food snack for the region's sizeable Islamic community. At Cha-tap, you can pull up a seat and try these delicious breads with a curry side – washed down with some freshly-brewed tea or coffee.

Tel: 08-6030-7479, 08-9015-6639

☉ FINE DINING

Blue Elephant

A synonymous name throughout the country for 'Royal Thai' fine-dining, Blue Elephant today delivers a menu of classic dishes once reserved only for the elite alongside more modern Thai flavors – all set in a charming old colonial mansion.

Tel: 0-7635-4355

Suay Restaurant

Following a concept of "innovative and authentic northeastern" flavors, the ultra-modern Suay Restaurant is a relative newcomer in Phuket's fine dining scene – but one definitely not to be missed.

www.suayrestaurant.com



"Innovative and authentic northeastern" flavors, a key concept of Suay Restaurant.

☉ CAFES

PiKGO

Bright, bold and definitely very blue – PiKGO cafe takes their coffee very serious, with expert baristas serving up a range of hot and cold drinks for that afternoon pick-me-up or cool-me-down.

Tel: 08-5058-6567

The Feelsion Cafe

This large cafe gets busy – not because of its excellent coffee – but instead thanks to its unique chic-garden shed design, with antiques and other trinkets scattered all over the place (aka, in-demand Instagram content, apparently).

www.phuket.net/directory/restaurants-cafes/the-feelsion-cafe

Orta Cafe

Phuket's Old Town is packed full of coffee shops, but one that stands out from the crowd with its cute decor is Orta Cafe. Go for one of their well-presented tea and coffee sets that comes with a range of sweet treats.

Tel: 06-5249-3616



☉ VEGETARIAN

Dok Bua Vegetarian Restaurant

It can sometimes be tricky to find 100% vegetarian food in Phuket. However, at the excellent Dok Bua restaurant, you can indulge in a long menu of meat-free Thai dishes that actually taste pretty good.

www.phuket.weserve.co.th/en/restaurant/dok-bua-vegetarian



☉ HALAL

**The Panwa Cafe'n Restaurant**

Located near some of the island's most picture-perfect beaches, this is the place to go if you're in the Panwa area and hankering after some Halal food, with both Thai and international dishes on the menu.

Tel: 08-3592-7544

☉ CLUBS

**Illuzion**

The imposing Illuzion Club on the notorious Bangla Road is Phuket's biggest and most popular club. Recent years have seen some of the world's biggest DJs visit, testing out the club's new-and-improved sound and lighting system for hundreds of partygoers each night.

www.illuzionphuket.com

Xana Beach Club

For a break from the blaring EDM and laser shows, head to the more sophisticated Xana Beach Club. This place still knows how to throw a party, but expect a more laid-back vibe overlooking the sea at Bangtao Beach.

Tel: 0-7635-8500

White Room

Another long-running club on Bangla Road (Patong Beach), White Room is a little more upmarket than some of its competitors, but still draws in a mixed crowd of clubbers each night after having undergone major renovations in recent years.

www.whiteroom-phuket.com

☉ HEALTHY

O-OH Farm

Focusing on quality ingredients and clean cooking techniques, O-OH Farm brings fresh produce straight to your table in Phuket Old Town with a menu of light Thai and Western dishes.

www.ohfarm.restaurantwebexperiments.com





SECTION 01

PHUKET

HOW TO GET THERE?

Phuket is Thailand's most-visited tourism destination outside of the capital, and so it comes as no surprise that the island province is easy to reach from all over Thailand, as well as surrounding Southeast Asian countries and the rest of the world. Here's how:

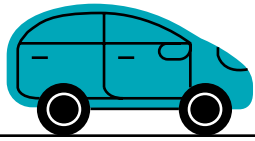
◎ BY PLANE



Direct daily flights land at Phuket International Airport from major cities around the region.

Although the most popular route in by air for international visitors (especially those coming from Europe and America) is via Bangkok. Airlines like Nok Air, Thai Smile, Thai Airways, Scoot and VietJet all have several flights a day from as little as THB 1,000 each way.

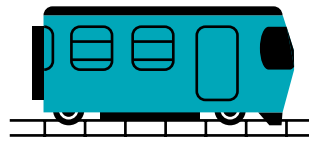
◎ BY CAR



With a valid international driver's license, it is theoretically possible to drive to anywhere in Phuket from anywhere in Thailand.

Thanks to the bridge that links the island to the mainland in the south. However, long road journeys are generally best avoided for those inexperienced in driving in Thailand. Plus, flying may work out cheaper than a long drive south.

◎ BY TRAIN



Sleeper trains depart from Bangkok's central Hua Lamphong Station for Phuket every evening.

It's worth noting that the total journey time can be more than 14 hours, although the bunks are relatively cheap, clean and safe, making this a popular option for the more adventurous backpackers.

◎ GETTING AROUND

Phuket is notorious for its over-priced taxis and minivans, although this is in comparison with places like Bangkok and Chiang Mai where getting from A to B is cheapest.

Try to use public transport as much as possible, like the excellent green bus that runs from the airport to Phuket Old town for a few hundred baht. Also, do remember to negotiate prices with taxi and songtheaw drivers before going anywhere.



BEST TIME TO GO

November to February is the so-called 'high season' in Phuket, during which time the island sees little to no rainfall and is not too hot. That said, even during rainy season (mid-May to October), most of the downpours are short and sharp – occurring most evenings for a few hours rather than tipping it down all day (although we make no promises there).



SECTION 01

PHUKET

SUGGESTED ITINERARY

Ready for an action-packed couple of days exploring the best of what Phuket has to offer in terms of culture, sightseeing, beaches, islands, food and nightlife? Then check out this tentative 2-day, 1-night itinerary – with your journey starting from your chosen accommodation in Phuket Town.

DAY 01



MORNING

After a leisurely breakfast, head out to the nearby Thai Hua Museum to learn about the history of Phuket and the Chinese immigrants who descended upon the island over 100 years ago.

From here, take a mid-morning stroll to check out the best of what Phuket's Old Town has to offer in the way of street art and classic Sino-Portuguese architecture.



LUNCH

Choose between either “Lock Tien” or “Kopitiam” restaurant, two splendid Phuket Town restaurants serving up authentic southern Thai food.



AFTERNOON

Head up the short but steep hill that is to Khao Rang, a spectacular viewpoint that affords some great views over the whole island – and maybe spot a few cheeky monkeys while you're there.

Back down, and you have the choice between visiting Wat Chalong Temple or the Big Buddha, two equally impressive and highly-revered Buddhist sites.

With the sun starting to slowly go down, now is the perfect time to head to Nai Harn Beach, a gorgeous strip of coastline well-suited for swimming or just kicking back as the sun sets below the hills.



DINNER/EVENING

For evening entertainment (without the headache in the morning), head to the ever-popular Siam Niramit, a spectacular show portraying the culture, traditions and beliefs of ancient Siam (with an inclusive dinner).



DAY 02



MORNING — AFTERNOON

Wake up for an early morning pick up from your hotel before heading out to sea, with the choice of a boat trip to the nearby Mai Ton Island or Khai Island.

**optional “Discover Phang Nga Bay” trip with John Grey SeaCanoe (however, as this requires traveling further to Phang Nga Bay, a full day is required for this trip).*



EVENING

Stock up on gifts for loved ones at Porn Thip Souvenir shop or treat yourself to some pampering at Cool Spa (advance booking required).

Before going back to the hotel, head out for a fine-dining dinner at Suay Restaurant (in Phuket town) or grab a casual bite to eat at WeCafe Salad Coffee Restaurant (near Sukko Spa) – depending on your choice of evening activity.



SECTION 02

Unique

EXPERIENCES

Conquering Mountains, Searching For My Soul,
Live Like A Local, Recharge, Make A Difference

Me & Myself

Unique Experience

Me & Myself

Unique Experience



03

Doi Pha Hom PokCHIANG MAI
(FANG DISTRICT)

Bubbling hot springs, waterfalls, caves, nature trails, secure camping ground. This national park in Northern Chiang Mai has it all. Doi Pha Hom Pok's main highlight is its viewpoint atop Thailand's second-highest mountain peak. Trek up to experience the sea of clouds below - best enjoyed at sunset or sunrise.

Tel: 0-5345-1441, 0-5345-3517



04

Mokuju PeakMAE WONG
NATIONAL PARK,
KAMPHAENG PHET

One of the highest parks in Thailand, Mae Wong (around 5 hours from Bangkok) is hugely popular with nature enthusiasts. Take an organized trek to the 1,900-meter summit (Mokuju Peak), keeping a close eye out for the park's gibbons, tapirs, black bears, jackals and exotic birds along the way.

Tel: 0-5576-6024, 0-5576-6027



05

Khao San Nok WuaKHAO LAEM NATIONAL PARK
KANCHANABURI

Reaching Kanchanaburi's highest peak may take some effort, but the spectacular panoramas, lush rolling green hills and 'sea of fog' above the clouds (best seen early in the morning) all make it totally worth it. The main trekking route is mixed terrain, cutting through both dense jungle and grass-covered plains.

Tel: 0-3451-0431, 08-9228-7612



SECTION 02: UNIQUE EXPERIENCE

CONQUERING MOUNTAINS**01 Doi Luang Chiang Dao**
CHIANG MAI

For trekking expeditions in Chiang Mai, it doesn't get much better than the vast Doi Luang Chiang Dao. The 2,000-meter summit can be reached in as little as 8 hours, although camping the middle of nature is also an option. Remember to bring your own equipment and register at the main office.

Tel: 0-5345-5802, 08-9955-1471



02

Doi Mon Jong

CHIANG MAI

A trek to the stunning peak of Doi Mon Jong begins at the park's "Forest Protection Unit", 4 hours away from Chiang Mai. Park rangers drop you off at the start of the route, which is relatively easy-going but quite long. You can reach the summit in a day, but most adventure-seekers tend to camp overnight.

Tel: 08-5708-7441



SECTION 02:

UNIQUE EXPERIENCE

SEARCHING FOR MY SOUL



01 Anghong International Meditation Centre

ANGTHONG

Not a fan of early mornings? Then Anghong Meditation Centre might not be for you. Your day here begins at 3.30 a.m. - before a full schedule of chanting, group meditating and cleaning chores. After lunch - your second and final meal of the day - expect more meditation, free time and a Dhamma talk before bed at 9 p.m.

Tel: 09-5884-7979



02 Bangkok Meditation Bureau 1

WAT YANNAWA,
BANGKOK

Wat Yannawa is most famous for its unique boat-shaped 'chedi' near Bangkok's Chaophraya River, and is one of the oldest in the city. But this temple is not just for sightseeing; a dedicated center is open for both Thai and foreign students wanting to learn and practice meditation in this unique location.

Tel: 0-2212-6567

03 Suan Mokkh International Dharma Hermitage

SURAT THANI

A short drive from Surat Thani's coastline, the peaceful Suan Mokkh runs a 10-day silent meditation retreat every month. Students must register in person on the final day of the month, with basic dorm accommodation, meditation classes and meals provided. And yes, no talking means no talking!

Tel: 08-6090-3296



04 Dhamma Simanta

LUMPHUN

Located amidst the hills of Northern Thailand's Lumphun province, Dhamma Simanta offers a range of different meditation courses lasting between 1 and 20 days. Both Thai and bilingual courses are available, as well those exclusively for females, males and mature students. Registration can be done in advance online.

Tel: 08-6431-0417, 08-6423-4938



05 Dipabhavan Meditation Center

KOH SAMUI

Take some much-needed time out, away from Koh Samui's often busy beaches and noisy nightlife, at the tranquil Dipabhavan meditation center. Healthy food, simple accommodation and daily meditation/chanting classes are all provided in this truly secluded hillside location overlooking over the island. Retreats run from the 3rd and 20th every month.

Tel: 09-6993-6955, 09-6565-9624



06 Wat Pa Tam Wua

MAE HONG SON

Situated on the twisting road from Mae Hong Son to Pai, Wat Pa Tam Wua is best known for its forest meditation center. Open to both local and foreigners at no cost, visitors can opt to go completely off-the-grid (no phones) or take a vow of silence - although these are both optional.

Tel: 08-1031-3326

 FISHERMAN'S VILLAGES

01

Pathio Community (Bang Son)

CHUMPHON

Situated slightly inland, the tiny fishing community of Pathio connects to the sea by a maze of khlongs (canals). To get around, hop on a special raft or long-tail boat and go snorkeling, squid fishing or catch the stunning sunset at the sandy bay. Don't miss the region's famous fireflies at night.

www.localalike.com/listing/18082



SECTION 02:

UNIQUE EXPERIENCE

LIVE LIKE A LOCAL

 CULTURAL VILLAGES

01

Ban Nam Chiao

TRAT

This charming fishing village has picked up awards for its approach to eco-tourism and sustainability. And while a couple of new homestays have opened up, the main canal-side community remains untouched, offering an authentic insight into life in rural Trat. Head inland on a nature trail or jump on a long-tail boat to explore the mangroves.

www.thaizer.com/features/ban-nam-chiao-eco-tourism-community-trat



02

Baan Laem

SUPHAN BURI

Just 100 km north of Bangkok, this old riverside village in Suphan Buri is a world away from the hustle and bustle of city life. Surrounded by rice paddies, Baan Laem is best known for its sumptuous desserts and fish-based dishes. Cooking classes are available, as well as trips to nearby temples dotted along the river.

www.localalike.com/listing/171031ikpv



02

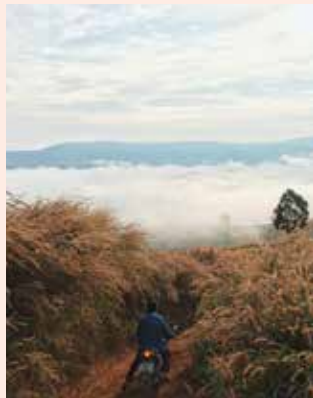
Baan Laem Klat

TRAT

They say the freshest seafood is found at source – and the fishing village of Baan Laem on Trat's southern coast proves exactly this point. Varieties of crab, shrimp, and fish are hauled in every day by the local fishermen – who are happy for visitors to join them at sea, looking out for Irrawaddy dolphins along the way.

www.localalike.com/listing/180820njikm





02

Ban Huai Pan Community

NAN

Experience the Lua people's almost-untouched way of life at Ban Huai Pan, a community that promises plenty of activities both on and off the water. Bamboo rafting and waterfall treks can be organized, or learn about old-age handicrafts, tour the integrated farms and even stay at a local's house inside the village.

www.welocaltravel.com/en/highlander-village-en/4055



01

Ban Bung Community

LOEI

Characterized by its mountainous terrain and lush green forests, the highland community of Ban Bung has plenty to do and see. Its lofty position affords some stunning viewpoints across the Hueang River into Laos, while local guides can give you a tour around the integrated farms, Laotian-inspired temples and best places to eat.

www.welocaltravel.com/en/highlander-village-en/4062



03

Mae Chaem Community

LAMPANG

Home to the Lahu and Mien hill tribes, Lampang's Mae Chaem district epitomizes highland village life – over 1,000 meters above sea level. See the how temperate fruits are grown, and help out in nearby coffee, tea and macadamia plantations. Further afield, the multi-tiered rice paddies offer some incredible views, especially in rainy season.

www.welocaltravel.com/en/highlander-village-en/4047

04

The Lanjia Lodge

CHIANG RAI

Immerse yourself in the middle of rural Chiang Mai at Lanjia Lodge, an eco-friendly, community-based hideaway where you can meet and contribute to the lives of the local Hmong hill tribe people. Adventure walks, batik-making, forest treks, massage and tours of the nearby Golden Triangle are just some of the not-to-be-missed activities.

www.localalike.com/listing/lanjia-lodge-hill-tribe-discovery-experience



01

Baan Khiri Wong Kot

UDON THANI

This remote Isaan (Northeastern) village boasts a spectacular location with the mountain, forest and river all at your doorstep. Take a tour of the rice paddies on converted 'e-tak' tractor, head into the forest to find cooling waterfalls and enjoy the best home-cooked Thai food you'll ever have together with the locals.

www.localalike.com/listing/180816f5vig



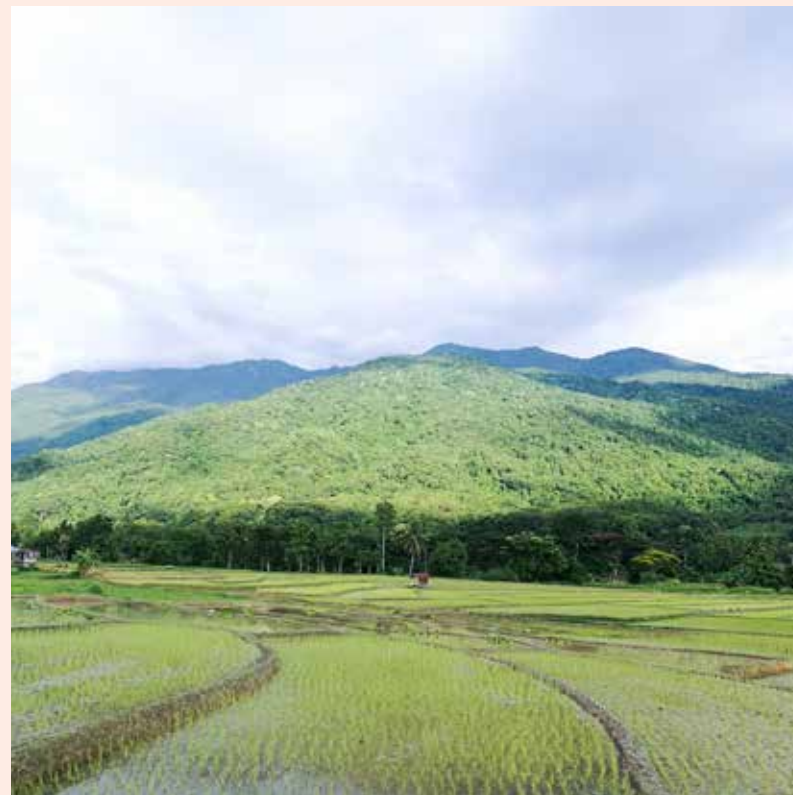
02

Sila Petch

NAN

Agriculture is the lifeblood of Sila Petch community in Thailand's Nan province, with rice paddies covering the rolling green terrain as far as the eye can see. It's back-to-basics in terms of the quaint homestay accommodation available – but with friendly locals happy to show you around, who needs five-star hotels anyway?

www.localalike.com/listing/180824nvv3y



⊙ Sila Petch, the rice paddies covering the rolling green terrain as far as the eye can see. The lifeblood of this community is definitely "agriculture".



SECTION 02: UNIQUE EXPERIENCE

RECHARGE

01 Chiva-Som International Health Resort HUA HIN

For peace, tranquility plus the added convenience of being under 3 hours from Bangkok, look no further than Chiva-Som in Hua Hin. The resort has long been a prominent name in Thailand's wellness industry, offering a variety of different multi-day retreats - from detoxification and yoga to cell purification and holistic treatments.

www.chivasom.com



02 Absolute Sanctuary & Yoga Center KOH SAMUI

Hidden away from the crowds of Koh Samui, this hillside sanctuary is one of the leading wellness retreats in Thailand. The Moroccan-inspired design is particularly eye-catching, with its high-end hotel rooms surrounded by swimming pools, hydrotherapy rooms, yoga studios, fitness facilities and more. For a quick escape, the beach is just 5 minutes away.

www.absolutesanctuary.com



03 Kamalaya Wellness Sanctuary And Holistic Spa Resort KOH SAMUI

The luxurious Kamalaya offers a varied menu of wellness courses aimed at recharging the mind and body, from emotional balance and stress reduction therapy to detox programs, yoga classes and fitness retreats. The sanctuary also promises an incredible island location, centered around a beachside cave once used by Buddhist monks to meditate.

www.kamalaya.com



The luxurious Kamalaya offers a lot of wellness courses aimed to recharge the mind and body. It promises an incredible island location that was once used by Buddhist monks to meditate.

04 Thanyapura Health & Sports Resort PHUKET

As Phuket's largest sports tourism and wellness facility, Thanyapura is spread over a 23-hectare site amidst the northern hills of the island. Guests have a vast range of activities and facilities from which to choose, including tennis courts, an Olympic-sized swimming pool, cycling studios, Muay Thai training, multiple gyms and a running track.

www.thanyapura.com





SECTION 02: UNIQUE EXPERIENCE

MAKE A DIFFERENCE

01 Mai Khao Marine Turtle Foundation (MKMTF) PHUKET

MKMTF protects sea turtles that still nest around Phuket's Mai Khao Beach area. No longer has a safe environment for nesting, volunteers rescue the eggs, before passing them on to other island facilities where they are taken care of. Once hatched and strong enough, the baby turtles are guided into the sea – their true home.

www.maikhaomarineturtlefoundation.org



02 Phuket Elephant Sanctuary HUA HIN

While the vast majority of elephant 'sanctuaries' in Thailand should be avoided due to their unethical practices, the Phuket Elephant Sanctuary in Paklok is an exception. The 30-acre site was established as a final home for abused and overworked elephants who can now roam around, chain-free. Volunteer programs are available inclusive of onsite accommodation.

www.phuketelephantsanctuary.org

03 Wildlife Friends Foundation Thailand (WFFT) PETCHABURI

This registered foundation aims to rescue neglected wild animals, as well as rehabilitate and release them whenever possible. They currently have volunteer positions open at their Wildlife Rescue Center, Elephant Refuge and Wildlife Hospital (all located in Phetchaburi), starting from \$350 per week. Duties include cleaning enclosures, making enrichments, and feeding/bathing some animals.

www.wfft.org



04 The Thai Child Development Foundation (TCDF) CHUMPHON

TCDF prioritizes the health and development of underprivileged children and children with disabilities, helping them to receive the specialized care and education they need. While only long-term local residents work directly with the children, you can contribute, too, with their 'volunteerism' program, helping out on the farm and school property in Paksong, Southern Thailand.

www.thaichilddevelopment.org



TCDF is the foundation that prioritizes the health and development of underprivileged children, also children with disabilities. You can contribute with the 'volunteerism' program helping out on farms and school property.



SECTION 03

LET'S SPEAK
Some Thai

Daily Thai Conversations,
Easy Words





DAILY THAI CONVERSATIONS

◎ WH-QUESTION

Where?
Teenai?

What?
A-rai?

When?
Mua-rai?

How?
Yang-ngai?

Why?
Tum-mai?

◎ YES-NO QUESTION

Yes
Chai

No
Mai-chai

(You/I) can
Dai

Can not
Mai dai

◎ FREQUENTLY USED WORDS

Hello
Sa-wat-dee

Sorry
Kho-Tort

No problem
Mai-bpen-rai

Goodbye
Bai

See you later
Jer-gun

What is
your name?
Khun-chuu-a-rai?

My name is
Chan-chuu....

How are you?
Sa-baai-dee-mai?

I am fine
Sa-baai-dee

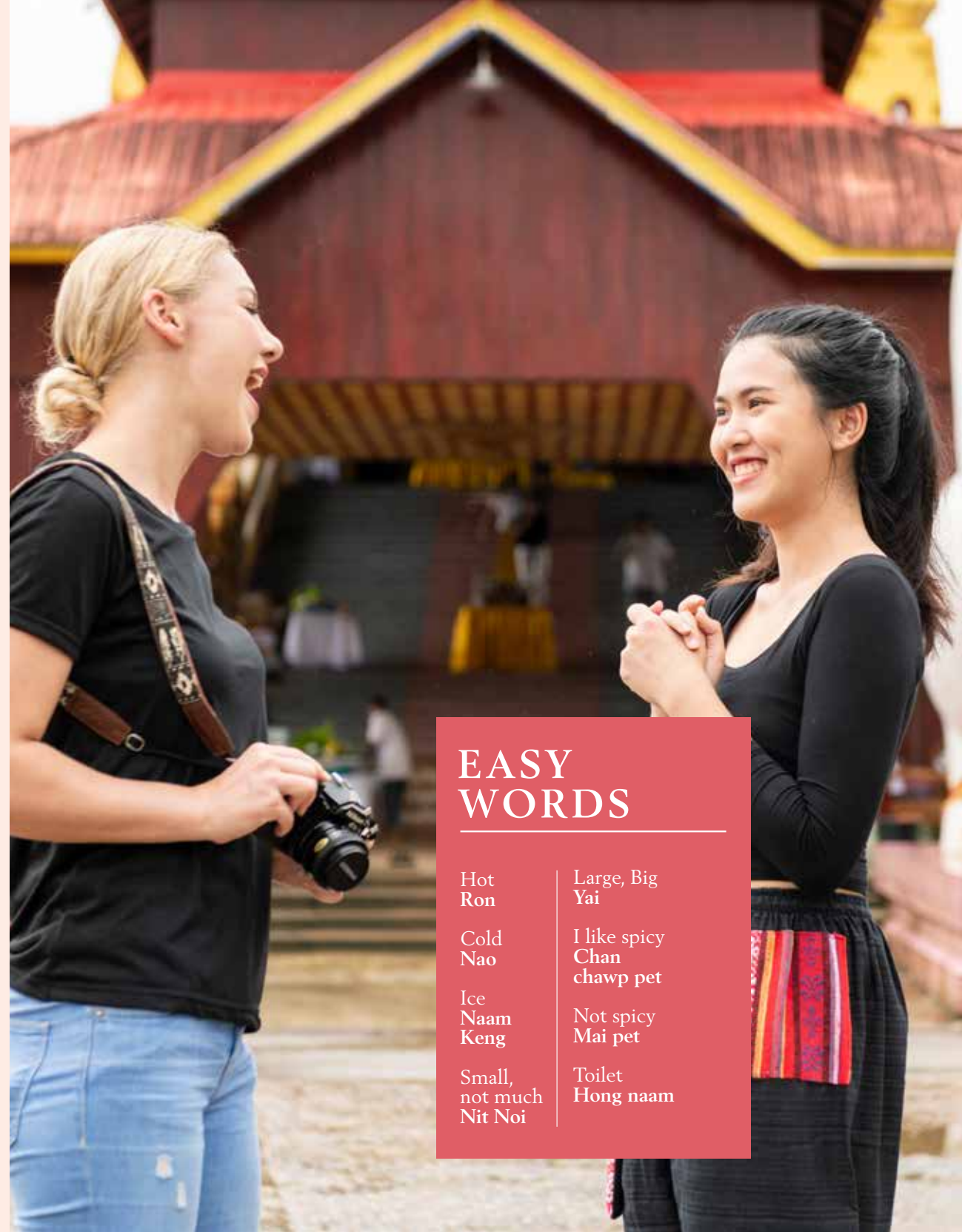
What is up?
Tum-a-rai?

I cannot speak Thai
Pood-paa-saa-
Thai-mai-dai

Can you speak English?
Khun-pood-paa-saa-
ang-grit-dai-mai

Do you understand?
Kow jai mai

I don't understand
Mai kow jai



EASY WORDS

Hot
Ron

Cold
Nao

Ice
Naam
Keng

Small,
not much
Nit Noi

Large, Big
Yai

I like spicy
Chan
chawp pet

Not spicy
Mai pet

Toilet
Hong naam



SECTION 04

Do's and Don'ts

IN THAILAND

Thailand: DO'S
Thailand: DON'TS





THAILAND: DO'S

1. Do greet Thai people using the 'wai' which is essentially a slight bow with one's palms touching one another.

2. Do try out some basic Thai phrases like sawadee ('hello') and kop khun ('thank you') - it's not necessary but will be appreciated by the locals!

3. Do dress modestly when visiting a temple. You will not be able to enter most temples if you are showing too much skin.

4. Do take your shoes off when entering any religious structure or a Thai person's home. It is disrespectful to keep them on.

5. Do make sure taxis use their meter (regardless if they say it's broken), and negotiate a price with a tuk-tuk driver before getting in.



6. Do try to plan on spend some weeks in the country! (not just a few days) From Bangkok, the bustling capital, to the southern beaches to the northern mountains and more, you'll want all of the time you can get in the Kingdom.

7. Do smile, and also do smile often! Known as the Land of Smiles, this small gesture goes a long way to the locals.

8. Do bring mosquito repellent especially if you are visiting during monsoon season.

9. Do purchase good travel insurance... just in case.

10. Do try to support local businesses.



THAILAND: DON'TS

1. Do not purchase any Buddhist images or get any Buddhist-related tattoos

Using any image of Buddha as a decorative item is considered very disrespectful.

2. Do not drink water from the faucets in Thailand.

Instead, stick to bottled water and use refill stations to stock up.

3. Do not bring e-cigarettes into Thailand as they are illegal.

4. There are some very strict lese-majeste laws in Thailand.

As a foreigner, it's best to avoid talking about the monarchy and royal family when traveling through the country.

5. Do not touch anyone's head while traveling through Thailand.

It is considered extremely disrespectful. By the same token, do not point your feet towards any person or religious statue in Thailand. Just as the head is considered the most sacred body part, the feet are considered the most disrespectful. This includes putting your feet up while you are traveling, for example, sitting at an airport.

6. Do not touch or approach any monks.

There are some temples that have monk chats where visitors can sit down and talk to a monk and inquire about their lifestyle. Chat away, but keep your distance.



7. Do not sweat the small stuff.

From tours to buses, trains and more, many of things run here on what is known as 'Thai Time.' Sit back, relax, and take it easy.

8. Do not drive or ride a motorbike without a helmet or valid license - you will be risking a fine.

9. Do not partake in any unethical animal tourism activities e.g. riding an elephant, posing with tigers, monkey shows, etc.

Me & myself & THAILAND



Tourism Authority of Thailand

1600 New Phetchaburi Road, Makkasan,
Ratchathevi, Bangkok 10400, THAILAND

www.tourismthailand.org