

Thailand
Cannabis
Travel Experience



Thailand
Cannabis
Travel Experience



32

**“LET’S ROLL” @BURIRAM
Buriram**

46

**ALL AGLOW IN UBON’S BLOOMING
CANNABIS COMMUNITY
Ubon Ratchathani**



68

**CHONBURI,
CITY OF CANNABIS
Chonburi**

82

**PULL UP IN PHUKET’S
CANNABIS WONDERLAND
Phuket**

CONTENTS

4

**APPRECIATE THE ARTS
AND EXPLORE THE LAND OF “CANNABIS”
Chiang Rai**

18

**VISIT KORAT’S
CANNABIS FARM AND WINE HEAVEN
Nakhon Ratchasima**



A pair of hands is shown from the bottom, holding a single, vibrant green cannabis leaf with serrated edges. The background is a dense field of similar cannabis plants, creating a lush green environment. The lighting is soft and natural, highlighting the texture of the leaves and the skin of the hands.

- FOLLOW THE WAY OF THE CANNABIS-HEMP CHIANG RAI TRAVEL EXPERIENCE -

Appreciate the Arts and Explore the Land of “Cannabis”



- LEARNING, CULTIVATION & MEDICAL CANNABIS EXTRACTION SITES -

Jitraksa Farm

This exemplary cannabis farm offers both fresh cannabis and processed cannabis products. The place is open to interested visitors to take a tour and learn how to plant cannabis as an economic crop.

- 🕒 Everyday 08:00 AM - 10:00 PM
- ☎ (+66) 86 516 5433
- 👤 Young มี ักญ
- 📍 <https://goo.gl/maps/efaZFJRQniCkDJkq9>



- CANNABIS-HEMP PRODUCTS & SERVICES AVAILABLE AT THESE ESTABLISHMENTS -

FEATURING A POPULAR CANNABIS-HEMP MENU

Malongder Restaurant

This pleasant riverside restaurant of Northern Thai fusion cuisine offers menus with a selection of quality ingredients, and elegant plating to satiate you with flavors and provide a feast for the eyes. Don't miss out on their cannabis menus.



- 🕒 Tuesday - Sunday 09:00 AM - 05:00 PM (Closed on Monday)
- ☎ (+66) 95 229 5359
- 👤 มาลองโต๊ะ: เชียงทราย
- 📍 <https://goo.gl/maps/Bxx472meCvbYoZqq8>

CANNABIS- & HEMP-RELATED SERVICES OFFERED HERE

Anantara Golden Triangle Elephant Camp & Resort

This luxurious resort offers you a new travel experience with the Jungle Bubble and relaxing spa sessions with cannabis as part of the treatment for your physical and mental relaxation.

- 🕒 Always Open
- ☎ (+66) 5378 4084
- 👤 Anantara Golden Triangle Elephant Camp & Resort
- 📍 <https://goo.gl/maps/PNYgJEURuCck5dFx9>





- NEARBY ENTERPRISES -



Le Méridien Chiang Rai Resort

Unlock the wonder of Chiang Rai at this luxurious resort on the banks of the Kok River. Discover some peace amid mountains in the cultural land of Lanna as proper self care for your soul.

- Always Open
- (+66) 5360 3333
- Le Méridien Chiang Rai Resort, Thailand
- <https://g.page/LeMeridienChiangRaiResort?share>



- LOCAL ATTRACTIONS -

Wat Rong Khun Temple

This pristine white chapel is decorated with shiny silver glass and exquisite contemporary stucco work, all of which were designed by Professor Chalermchai Kositpipat, National Artist for visual arts (paintings).

- Everyday 08:00 AM - 05:00 PM
- (+66) 5367 3579
- ဘုရားကျောင်း - Wat Rong Khun - White Temple, Chiang Rai, Thailand
- <https://goo.gl/maps/uiuajfqWBkvr5C5A7>





- LOCAL ATTRACTIONS -

Singha Park, Chiang Rai

An agritourism destination on a space of over 8,000 rai, Singha Park comprises of a vast Oolong tea plantation, multi-species flower gardens, a small-sized zoo, restaurants, and cafes in a refreshing atmosphere.

- 🕒 Everyday 08:00 AM - 06:00 PM
- ☎ (+66) 5316 0636-7
- 📍 Singha Park Chiang Rai สิงห์ปาร์ค เชียงราย
- 📍 <https://goo.gl/maps/7PRaAokhWn7ZoErd9>



Art Bridge

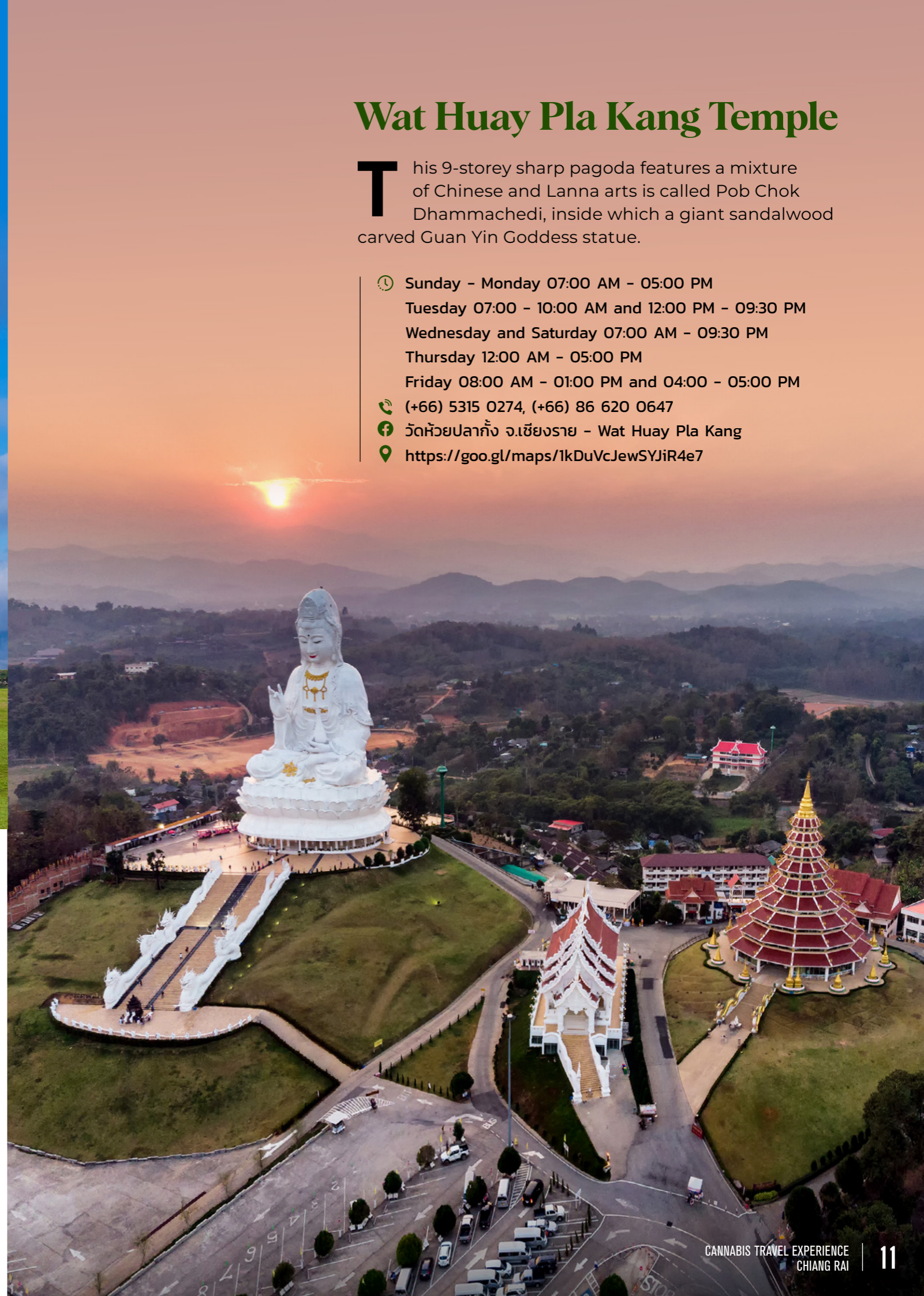
The art gallery and knowledge center featuring a rotating series of art exhibitions was founded out of love and the generosity of the Chiang Rai-based artist group to serve as the bridge that connects the arts and society.

- 🕒 Everyday 09:00 AM - 06:00 PM
- ☎ (+66) 88 418 5431
- 📍 ชั่วค้ำป:
- 📍 <https://goo.gl/maps/s8wL4ahhV9LFNNGi8>

Wat Huay Pla Kang Temple

This 9-storey sharp pagoda features a mixture of Chinese and Lanna arts is called Pob Chok Dhammachedi, inside which a giant sandalwood carved Guan Yin Goddess statue.

- 🕒 Sunday - Monday 07:00 AM - 05:00 PM
- Tuesday 07:00 - 10:00 AM and 12:00 PM - 09:30 PM
- Wednesday and Saturday 07:00 AM - 09:30 PM
- Thursday 12:00 AM - 05:00 PM
- Friday 08:00 AM - 01:00 PM and 04:00 - 05:00 PM
- ☎ (+66) 5315 0274, (+66) 86 620 0647
- 📍 วัดห้วยปลากั้ง จ.เชียงราย - Wat Huay Pla Kang
- 📍 <https://goo.gl/maps/1kDuVcJewSYJiR4e7>







- CHIANG RAI PROGRAM OF THE CANNABIS-HEMP TRAVEL EXPERIENCE -

Appreciate the Arts and Explore the Land of “Cannabis”

Be amazed by exquisite Buddhist Art and explore the Land of Lanna “Chiang Rai,” the city of culture and arts. Gather new experiences. Visit an comprehensive organic cannabis farm. Relieve your mind & body with relaxing treatments inspired by the element of cannabis offered by a luxurious resort.

DAY 1

CHIANG RAI ART CITY Appreciate Art in the Artistic Land of “Chiang Rai”



In the morning, meet at the assembly point in Chiang Rai or Chiang Rai Airport.

Visit Jitraksa Farm, the comprehensive organic cannabis farm and learning center in Chiang Rai province.

At noon, relish the lunch menus of both Northern Thai cuisine and healthy cannabis-infused dishes at Ma Long Der.

In the afternoon, appreciate artworks at Art Bridge. Check in at Anantara Golden Triangle Elephant Camp & Resort.

In the evening, enjoy healthy menus at the resort.

DAY 2

CANNABIS JOURNEY & INDIGENOUS TREATMENTS.

Travel Trend for Nature Lovers and New Cannabis Spa Treatment Experiences

In the morning, have breakfast at the resort.

At noon, follow Anantara Spa to explore the new world of natural treatments with cannabis, where you are able to select spa programs of your liking.

Cannabis has been used in traditional medicines around the world for decades, offering various benefits from peace of mind to physical relief with anti-inflammatory and antioxidant properties for ultimate relaxation.

Relax with cannabis spa treatment activities for health at Anantara Spa via 3 treatment programs:

A: RESTFUL SLUMBER JOURNEY (90 minutes): Enjoy a CBD-infused salt soak and lavender cannabis oil massage prior to cannabis tea as a finale.

B: HEAD-TO-TOE CALMING JOURNEY (90 minutes): Enjoy the full session of massages from a foot soak to head massages as well as body massages infused with cannabis to relieve muscle swelling and strain.

C: CANNABIS STRESS-RELEASE JOURNEY (90 minutes): Relax with compress massages using herbs and cannabis oil suitable for pain relief for those suffering from “Office Syndrome”.

In the afternoon, check in at Le Meridien Chiang Rai Resort.

Enjoy healthy dishes at the accommodation.



DAY 3

CULTURE & SIGHTSEEING Exquisite Arts, Cultures, and Architecture in the Land of Buddhist Art

In the morning, have breakfast at the accommodation.

Check out from the accommodation.

View the grandeur of Wat Huay Pla Kang Temple.

At noon, have lunch at Singha Park, riding a trolley and touring around the farm.

Experience the exquisiteness of the architecture at Wat Rong Khun Temple.

In the afternoon, arrive at the airport, accommodation, or location in the Chiang Rai city center.

Cannabis *Travel Experience*

Chiang Rai



Anantara Golden Triangle Elephant Camp & Resort



Art Bridge



Jitraksa Farm



Malongder Restaurant



Wat Huay Pla Kang Temple



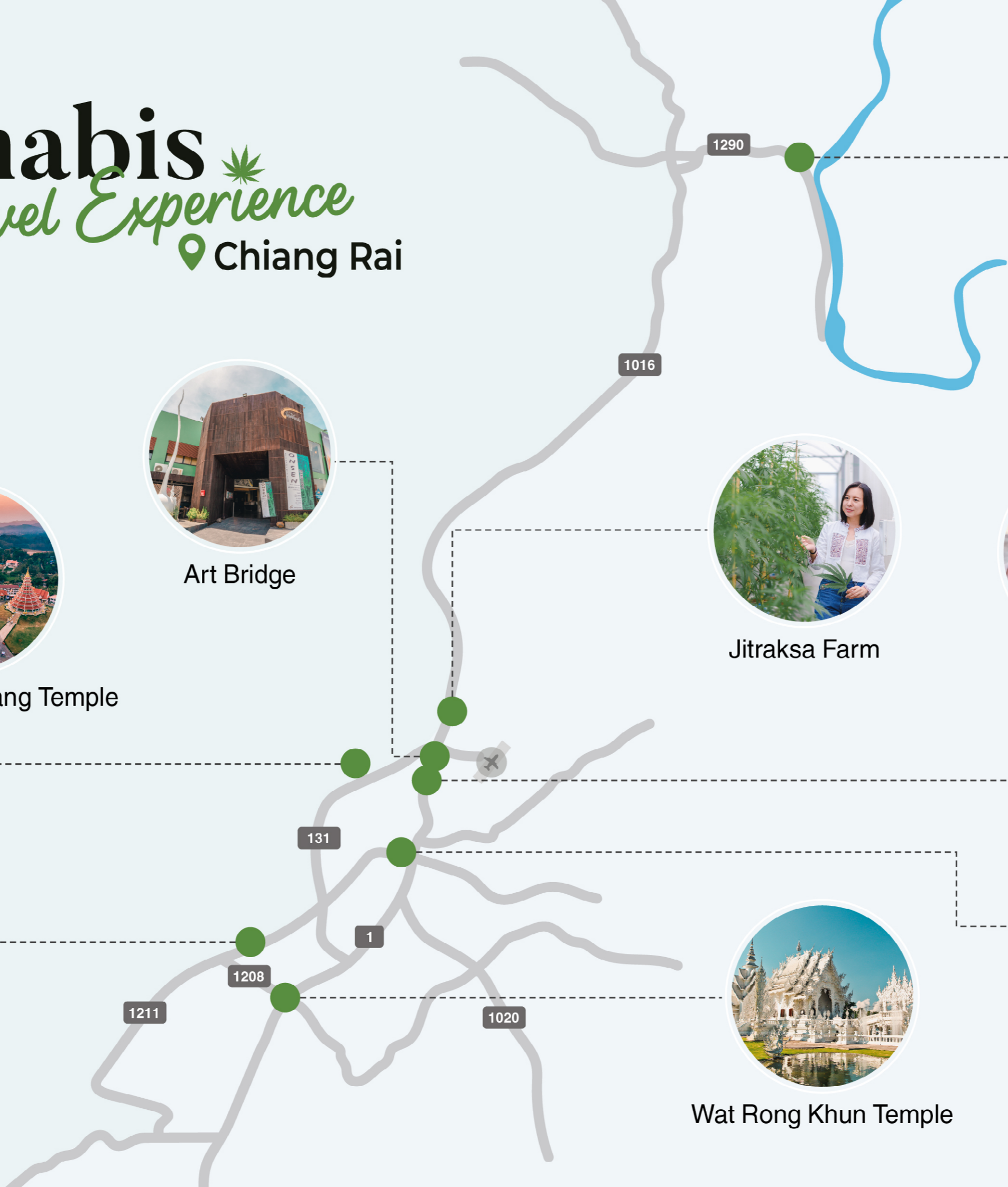
Singha Park, Chiang Rai



Wat Rong Khun Temple



Le Méridien Chiang Rai Resort





- FOLLOW THE WAY OF THE CANNABIS-HEMP NAKHON RATCHASIMA TRAVEL EXPERIENCE -

Visit Korat's Cannabis Farm and Wine Heaven



- LEARNING, CULTIVATION & MEDICAL CANNABIS EXTRACTION SITES -



Qualitative Research Project on Cannabis Production for Medical Benefits, Suranaree University of Technology



Fostering cooperation with networks of community enterprises and farmers in all regions. The objective is to develop cannabis and hemp as economic crops. Consequently, this research project is the country's largest cannabis hub.

- 🕒 Monday - Friday 08:30 AM - 04:30 PM
- ☎ (+66) 4422 3000
- 📍 Suranaree University of Technology
- 📍 <https://goo.gl/maps/DhCwVKfdBdd45wYk9>



Rak Jang Farm

The farm of love, previously widely known for its melon farm, is to become a medical cannabis farm and an agritourism destination offering photogenic spots and quality OTOP products for you to shop.

- 🕒 Wednesday - Monday 08:00 AM - 05:00 PM (Closed on Tuesday)
- ☎ (+66) 81 348 4444
- 📍 RJC COIN by รักจังฟาร์ม
- 📍 <https://goo.gl/maps/948Yo1RM6EJKzMEo7>





- CANNABIS-HEMP PRODUCTS & SERVICES AVAILABLE AT THESE ESTABLISHMENTS -



FEATURING A POPULAR CANNABIS-HEMP MENU

Class Café (SUT Branch)

This café chain from the Isan region develops cannabis-infused drinks under the brand KhaoYai CALM. Interesting menus for interesting menus are available for interested customers to try out.

- Always Open
- (+66) 4425 5002
- Class Cafe'
- <https://goo.gl/maps/4KBKqoL2inf2DR4S6>



CANNABIS- & HEMP-RELATED SERVICES OFFERED HERE

Thai Massage Club, Wang Nam Khiao

Thai Massage Club, located in Rak Jang Farm, offers local style relaxing herbal cannabis compress massages. The cannabis is produced by the Rak Jang Farm Community Enterprise to help relax both your body and mind.



- Wednesday - Monday 08:00 AM - 05:00 PM (Closed on Tuesday)
- (+66) 81 348 4444
- RJC COIN by รักจังฟาร์ม
- <https://goo.gl/maps/948Yo1RM6EJKzMEo7>





- NEARBY ENTERPRISES -



Kantary Hotel Korat

As a luxurious residential style hotel, we offer not only convenience and facilities to ensure a productive stay on a busy schedule, but also a superbly appointed contemporary Asian living experience.

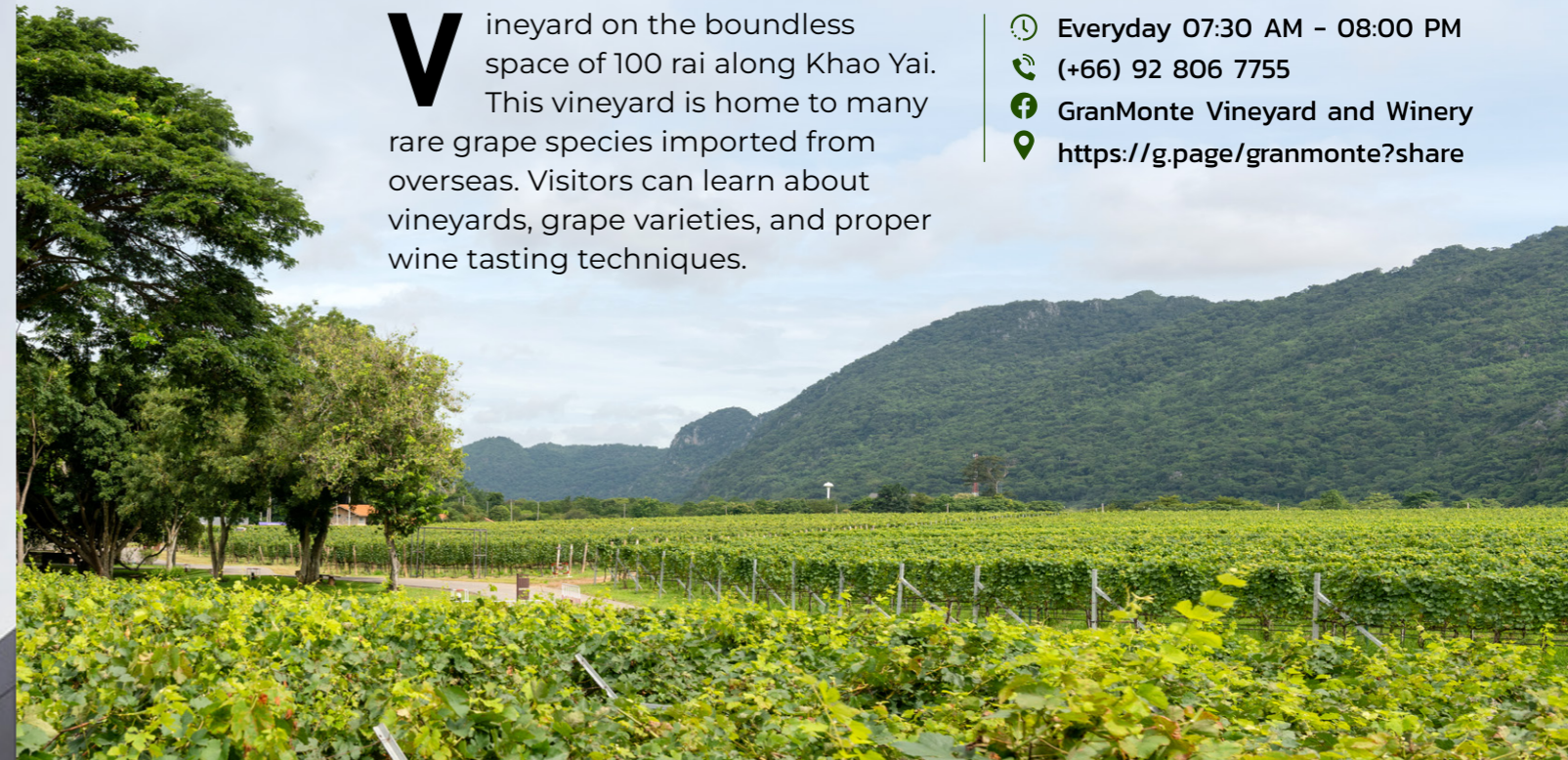
- Always Open
- (+66) 4435 3011
- โรงแรมแคนทารี โคราช
- <https://goo.gl/maps/ihNvpPgfVyUejU8e7>



GranMonte Vineyard and Winery

Vineyard on the boundless space of 100 rai along Khao Yai. This vineyard is home to many rare grape species imported from overseas. Visitors can learn about vineyards, grape varieties, and proper wine tasting techniques.

- Everyday 07:30 AM - 08:00 PM
- (+66) 92 806 7755
- GranMonte Vineyard and Winery
- <https://g.page/granmonte?share>



Khrua Baan Lekthi 5 Restaurant

This age-old restaurant in the middle of a santol farm, amid the silvan and pleasant atmosphere, is well-suited for family gatherings. The place serves flavorful Thai cuisine that will impress anyone who gives it a try.

- Everyday 09:00 AM - 08:00 PM
- (+66) 86 243 4411
- (+66) 83 467 4411
- ครุบ้านเลขที่ 5 -ไทยสามัคคี วังน้ำเขียว
- <https://goo.gl/maps/sw66Muv3wS2AZseG8>



Khrua Tatip Restaurant

This Thai restaurant by Lam Taklong Dam serves exquisitely delicious Thai cuisine at affordable prices and with a variety of menus. Their must try menus are fresh fish.

- Everyday 09:00 AM - 07:00 PM
- (+66) 97 082 4243
- ครุวัดตาดิบ
- <https://goo.gl/maps/Y8FuN2NAvbWjN76a8>







Visit Korat's Cannabis Farm and Wine Heaven

Be amazed in Nakhon Ratchasima. Visit Rak Jung Farm Community Enterprise. Learn the model for quality cannabis plantations at the greenhouse. Visit the farm which is the medical cannabis manufacturing site for Chaophraya Abhaibhubejhr Hospital. Do not miss the winery vineyard tour. Take a sip of quality wine at GranMonte, Pak Chong subdistrict.

DAY 1

SIGHTSEEING CANNABIS FARM & VINEYARD AND WINERY TOUR

Take a tour around the vineyard-winery. Visit the model medical cannabis farm.

In the morning, meet at the assembly point.

Enjoy a snack; take a tour of GranMonte Vineyard.

At noon, have lunch at GranMonte Vineyard and Winery.

In the afternoon, travel to Wang Nam Khiao subdistrict. Visit the model medical cannabis farm at Rak Jang Farm.

Shop for cannabis products and relax with cannabis compress massages by the Thai Massage Club of Wang Nam Khiao.

In the evening, dine at Khrua Baan Lekthi 5 Restaurant.

Stay at Kantary Hotel Korat.



DAY 2

MEDICAL CANNABIS KNOW-HOW

Take a deep dive into the medical cannabis cultivation processes.

In the morning, have breakfast at the accommodation.

Visit the research project on medical cannabis production of Suranaree University of Technology.

At noon, taste some cannabis infused coffee from Class Cafe.

In the afternoon, have lunch at Khrua Tatip Restaurant.

Return safely to Bangkok.





GranMonte Vineyard and Winery



Khrua Tatip Restaurant



Class Cafe' (SUT Branch)



Qualitative Research Project on Cannabis Production for Medical Benefits (SUT)



Kantary Hotel Korat



Khrua Baan Lekthi 5 Restaurant



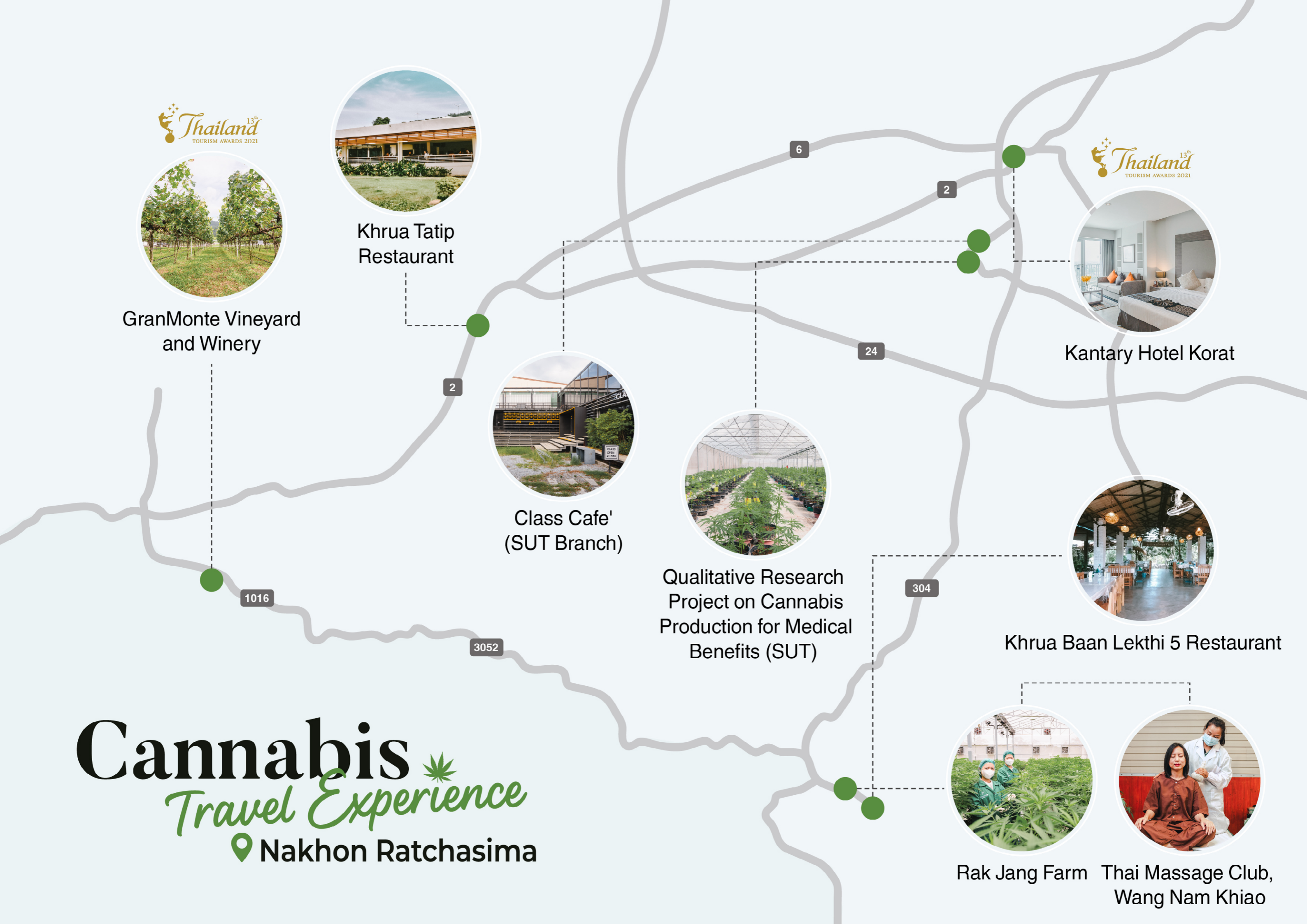
Rak Jang Farm



Thai Massage Club, Wang Nam Khiao

Cannabis Travel Experience

Nakhon Ratchasima





- FOLLOW THE WAY OF THE CANNABIS-HEMP BURIRAM TRAVEL EXPERIENCE -

“Let’s Roll” @Buriram

- LEARNING, CULTIVATION & MEDICAL CANNABIS EXTRACTION SITES -



Play La Ploen Herbal Development Center Enterprise for Community

The new wellness attraction in Buriram province, The destination for medical cannabis and hemp-related knowledge, as well as cannabis and hemp-infused pastries and drinks that you can savor.

- 🕒 Monday - Friday 09:00 AM - 05:00 PM
Saturday - Sunday 08:00 AM - 08:00 PM
- ☎ (+66) 87 798 1039
- 📍 Play La Ploen
- 📍 <https://goo.gl/maps/AAt7ybGH4YftPiqS6>



FEATURING A POPULAR CANNABIS-HEMP MENU

Baansuan Fruit and Gardens

An agritourism attraction with organic, chemical-free fruit and vegetable farms, as well as a cannabis farm amid the peaceful and silvan scenery. A country-style homestay in the middle of paddy fields.

- 🕒 Sunday - Monday 08:00 AM - 06:00 PM
(Closed on Tuesday)
- ☎ (+66) 61 447 9929
- 📍 บุรีรัมย์ บ้านสวนพริตการณ์เด่นส์
- 📍 <https://g.page/baansuan?share>





- CANNABIS-HEMP PRODUCTS & SERVICES AVAILABLE AT THESE ESTABLISHMENTS -



CANNABIS- & HEMP-RELATED SERVICES OFFERED HERE

AROKAYA Wellness Sala

A comprehensive medical service center. It is also part of Play La Ploen, which offers checkup and consultation services in relation to health and herbal medicine as well as comprehensive cannabis-related knowledge.



- 🕒 Everyday 08:00 AM - 06:00 PM
- ☎ (+66) 92 515 6458
- 📍 Arokaya Wellness Sala
- 📍 <https://goo.gl/maps/US85Zg2CSPnS34WT9>

FEATURING A POPULAR CANNABIS-HEMP MENU

Miles Cafe' Buriram

The restaurant for those who love to chill out, offers dishes and drinks of Thai, Isan, and European fusion with savory tastes, especially the pleasant cannabis-infused menu.



- 🕒 Everyday 11:00 AM - 00:00 AM
- ☎ (+66) 63 803 9365
- 📍 Miles Cafe' Buriram
- 📍 <https://goo.gl/maps/vhun8cHdp8AQC6Rv8>

CANNABIS- & HEMP-RELATED SERVICES OFFERED HERE

Olan Nuad Thai

Dr. Olan, a Thai massage master who has applied the art and science of Thai local wisdom to the local doctor's use of herbal cannabis in the Isan region for wellness and body rebalancing.



- 🕒 Wat Pa Khao Noi Branch
Everyday 08:00 AM - 10:00 PM
- 🕒 Lam Plai Mat Branch
Everyday 08:00 AM - 07:00 PM
- ☎ (+66) 4463 4789, (+66) 81 266 0952
- 📍 Olan Nuad Thai อนุชิต
- 📍 Wat Pa Khao Noi Branch
<https://goo.gl/maps/ym6CfbjAZeIPwT2y8>
- 📍 Lam Plai Mat Branch
<https://goo.gl/maps/2DZPe8DwJsNMSo3i7>





- CANNABIS-HEMP PRODUCTS & SERVICES AVAILABLE AT THESE ESTABLISHMENTS -

FEATURING A POPULAR CANNABIS-HEMP MENU

Amari Buriram United Hotel

Thailand's one and only football-themed hotel is ready to offer exclusive hotel experiences and relaxing days with family, with luxurious rooms and dishes made from cannabis.

- Always Open
- (+66) 4411 1444
- Amari Buriram United
- <https://g.page/AmariBuriram?share>



- LOCAL ATTRACTIONS -



Tangtaworn Farm

A chemical-free melon farm in the middle of Tung Gula Ronghai plain. It is famous for the variety of melon types as well as fresh vegetables and seedless watermelons as the farm's produce.



- Everyday 08:00 AM - 05:00 PM
- (+66) 61 029 6557
- ตั้งถาวรฟาร์ม - Tangtaworn Farm
- <https://goo.gl/maps/1jqGkojpZZs81Prr9>





- BURIRAM PROGRAM OF THE CANNABIS-HEMP TRAVEL EXPERIENCE -



“Let’s Roll” @Buriram

Enjoy your time at Play La Ploen, an agritourism destination on the “cannabis route” in Buriram province. Take a cannabis farm tour and try making cannabis oil yourself. Relax with compress massages with cannabis-infused products.

DAY 1

SIGHTSEEING & CANNABIS WORKSHOP

The Marvelous Medical Cannabis Learning Center, Play La Ploen Flora Park

In the morning, meet at the assembly point at Don Mueang International Airport.

Depart for Buriram province.

Have breakfast at Tangtaworn Farm.

Travel to Play La Ploen Flora Park, Khu Muang district.

In the late morning, enjoy Play La Ploen Flora Park where flowers bloom throughout the year.

At lunch, enjoy creative cannabis-infused menus.

Relax with highly exclusive cannabis spa treatments at Luminous Spa.



In the afternoon, visit Play La Ploen community enterprise; also the medical cannabis learning center.

Learn medical cannabis production processes from special speakers.

Join the DIY workshop to make cannabis oil.

Have some snacks and herbal drinks.

In the evening, relax with cannabis wellness and view the wellness exhibition.

Restore Thai local medicinal wisdom “Sum Ya” (herbal steam inhalation), which is beneficial for your lungs.

Have dinner at Miles Café, Buriram.

Stay at Amari Buriram United Hotel as you please.

DAY 2

HERBAL TREATMENT /CANNABIS FARM TOUR

Cannabis Compress
Massages - Treatments to Improve Blood Circulation and Cannabis Farm Tour



In the morning, have breakfast at the accommodation.

Visit the quality cannabis farm for medical purposes at Baan Suan Fruit and Gardens, the integrated agritourism destination and cannabis plant house.

At lunch, enjoy the cannabis khantoke of local authentic taste at Baan Suan Fruit and Gardens.

Enjoy a Thai massage spa with the treatment of “medicinal cannabis” at Olan Nuad Thai.

In the afternoon, travel to Buriram Airport.

Fly safely back to Don Mueang International Airport.





AROKAYA
Wellness Sala



Baansuan Fruit
and Gardens



Miles Cafe' Buriram



Olan Nuad Thai



Play La Ploen Herbal
Development Center
Enterprise for Community



Tangtaworn Farm



Amari Buriram
United Hotel

Cannabis Travel Experience

Buriram



- FOLLOW THE WAY OF THE CANNABIS-HEMP UBON RATCHATHANI TRAVEL EXPERIENCE -

All Aglow in Ubon's Blooming Cannabis Community



- LEARNING, CULTIVATION & MEDICAL CANNABIS EXTRACTION SITES -



Community Enterprise Akilanang



A community enterprise of medical cannabis farmers. It is equipped with cooperation from many units for the medical cannabis plantation and uses for medicinal treatments under the supervision of doctors.

- 🕒 Monday - Friday 09:00 AM - 05:00 PM
Saturday - Sunday 09:30 AM - 05:00 PM
- ☎ (+66) 83 681 9884
- 📍 อคิลา nang เกสัชภิรมย์
- 📍 <https://goo.gl/maps/TrhHYjpEPfHt7yS46>



Community Enterprise Kaset Donchart Phuedplodphai

A cannabis plantation and learning center licensed by the Department of Medical Services, with various activities offered to interested visitors.

- 🕒 Everyday 08:00 AM - 07:00 PM
- ☎ (+66) 84 960 4448
- 📍 วิสาหกิจชุมชนเกษตรดอนชาติ พืชปลอดภัย
- 📍 <https://goo.gl/maps/4iouWyjyXCeSMbx18>

- CANNABIS-HEMP PRODUCTS & SERVICES AVAILABLE AT THESE ESTABLISHMENTS -



FEATURING A POPULAR CANNABIS-HEMP MENU

Godfather Coffee

This cool club-themed cafe is for coffee lovers. The cafe has their own selection of coffee beans, roasted until aromatic. The cafe serves equally amazing bakeries. Additionally, cannabis-infused drinks brewed by Syphon (appointment only) are also available.

- 🕒 Everyday 08:00 AM - 06:00 PM
- ☎ (+66) 83 124 4440
- 📍 GODFATHER COFFEE
- 📍 <https://goo.gl/maps/xLTHfkBmDkAmCy247>



FEATURING A POPULAR CANNABIS-HEMP MENU

Yimkan by Chachak Pa Nom & Krua Khaonim

Chachak Pa Nom & Krua Khaonim offers menus and drinks in a variety of tastes. The most recently introduced menu is Yimkan, filled with savoriness, a tasteful cannabis-infused drink.



- 🕒 Everyday 08:00 AM - 05:00 PM
- ☎ (+66) 95 619 3535
- 📍 ยิ้มกัญ by ชาชักปานอม & ครวข้าวต้ม
- 📍 <https://goo.gl/maps/ZYfbUuiFHvQVAG3s6>



CANNABIS- & HEMP-RELATED SERVICES OFFERED HERE

Tianhom Massage for Health (Bodin Hotel)

This massage and spa shop adopts the art of massage treatments by professionals. Also collaborates with Community Enterprise Kaset Donchart to offer massages with cannabis-infused products for complete relaxation.

- 🕒 Everyday 09:30 AM - 11:00 PM
- ☎ (+66) 91 019 0113
- 📍 เทียนหอม นวด&สปา
- 📍 <https://goo.gl/maps/q2EjHaxJdp8o3ZdcA>





- CANNABIS-HEMP PRODUCTS & SERVICES AVAILABLE AT THESE ESTABLISHMENTS -

CANNABIS- & HEMP-RELATED SERVICES OFFERED HERE

Wat Sirindhorn Wararam Phu Prao Temple

The title of the glowing temple is earned from the exquisite beauty of wall paintings that look green in the dark. Moreover, the temple promotes the concept of local herbal medicine recipes such as cannabis for illness treatments.

- Everyday 06:00 AM - 08:00 PM
- (+66) 81 851 3088
- วัดสิรินธรวรารามภูพร้าว
- <https://goo.gl/maps/Ph9N6fEqKbh6uiRp8>



- NEARBY ENTERPRISES -

Indochin Restaurant, Vietnamese Cuisine

For over 60 years, this landmark restaurant has been serving authentic Vietnamese cuisine as well as producing Vietnamese rice wrappers as the biggest manufacturer in the province.

- Everyday 09:00 AM - 10:00 PM
- (+66) 4525 4126
- ร้านอาหาร อินโดจีน จ.อุบลฯ Indochine restaurant - Vietnam cuisine
- <https://goo.gl/maps/vxiXaQpcafVLLA1i7>





- NEARBY ENTERPRISES -

Araya Food Sirinthon Restaurant

This place can be a stop to take some rest while waiting for the sunset before heading to view the beauty of the glowing temple. The restaurant offer serves many savory local dishes.

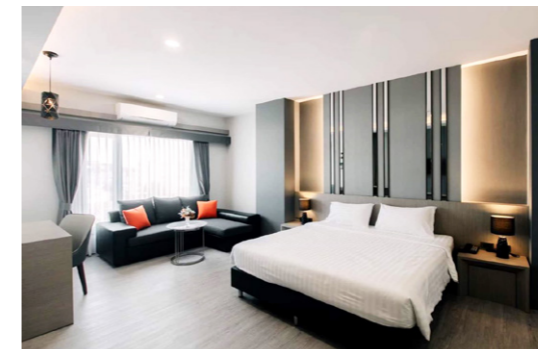
- 🕒 Everyday 09:00 AM - 08:00 PM
- ☎ (+66) 86 877 4204
(+66) 4525 1230
- 📍 ร้านอาหารอารยา สาขาเขื่อนสิรินธร อ.สิรินธร จ.อุบลราชธานี
- 📍 <https://goo.gl/maps/ni4tY7XKC4Tm7Thy6>



Arom Sawang Cafe

This chic café in a traditional yet modern Thai-style house amid the silvan atmosphere. The café serves a variety of delicious menus, including main dishes, desserts, pastries, and drinks.

- 🕒 Monday - Friday 07:30 AM - 06:00 PM
Saturday - Sunday 07:30 AM - 07:00 PM
- ☎ (+66) 63 408 9502
- 📍 อารมณ์สว่าง R-romsawang
- 📍 <https://goo.gl/maps/TXNxqb6djQbfTxbP7>



Arista Hotel

This hotel in the heart of the city offers spotless spacious rooms fully equipped with all amenities and is close to shopping districts and night markets. There are also EV chargers available to service.

- 🕒 Always Open
- ☎ (+66) 63 301 3330
- 📍 Arista Hotel Ubon - อริสตาร์โฮเทลอุบล
- 📍 <https://goo.gl/maps/vTFa2LhjbKtMhvkx9>



- NEARBY ENTERPRISES -

Tohsang Heritage Khongjiam Hotel

This contemporary boutique-style resort by the Mae Khong riverbank welcomes you to take a breath of fresh air amid nature. Enjoy the view of the bi-colored river with all facilities for your utmost relaxation.

- 🕒 Always Open
- ☎ (+66) 4535 1174
- 📍 ทอแสง เฮอร์ริเทจ โขงเจียม
- 📍 <https://g.page/tohsangkhongjiamresort?share>



Chomchan Restaurant

This restaurant by the Mun riverbank has the best atmosphere around with both indoor and open air seating zones as well as karaoke rooms. It is also outstanding for the variety of savory menus.

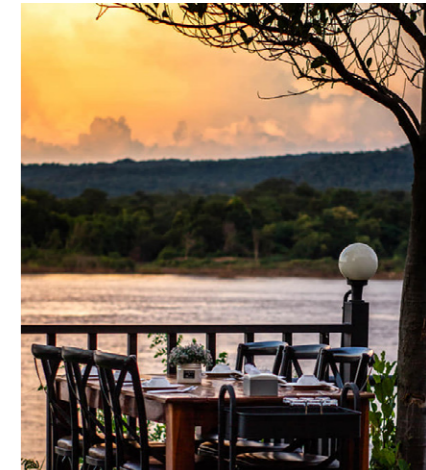
- 🕒 Everyday 11:00 AM - 11:00 PM
- ☎ (+66) 84 477 1999
- 📍 ชมจันทร์ กินลม ชมดาว ริมแม่น้ำ อุบลราชธานี
- 📍 <https://goo.gl/maps/5Kejvs0amXixKPrm9>



Peerada Khong Chiam Restaurant

Escape the urban bustles and chaos in just a one-hour drive from the heart of the city and discover this resort by the Mae Khong riverbank in the serene and simplistic atmosphere and romantic sunrise views.

- 🕒 Everyday 09:00 AM - 09:00 PM
- ☎ (+66) 93 358 4006
- 📍 Peerada Café
- 📍 <https://goo.gl/maps/Uwe6xKAgipytbhkp9>





Ubon Street Art Project

This project is a collaboration among Ubon people who are pleased to have the space open for street arts and graffiti on the building walls. To give color to the old town and boost tourism of the area to become more fascinating.

🕒 Always Open
📍 <https://goo.gl/maps/2nCGA6TrSnUk9C1y8>



Wat Tham Khuha Sawan Temple

This temple is located on the Mae Khong riverbank, offering the spectacular view of the bi-colored river where Mae Khong River meets Mun River. View Tham Khuha Sawan cave and the world's largest ASEAN gong.

🕒 Everyday
📍 <https://goo.gl/maps/EM2JNQWFzXwDRX9q9>

Wat Thung Si Muang Temple

This temple is outstanding for its distinguished architecture unlike any others in the Isan region, especially Hor Trai Wat Thung, the entirely made of wood. That is so exquisite and valuable.

🕒 Everyday
📍 <https://goo.gl/maps/HMgxGhA2zAawjB9p9>





- LOCAL ATTRACTIONS -



Wat Maha Wanaram Temple

Wat Maha Wanaram Temple is an age-old royal temple in the province, where Principal Buddha Phra Chao Yai Indra Plang, the Subduing Mara Buddha Image widely respected in the province, is enshrined.

- 🕒 Always Open
- 📍 วัดมหาวันาราม พระอารามหลวง
- 📍 <https://goo.gl/maps/Cu1hJERyFGL53jqx6>

The Glowing Town, Chongmek Renovate

This new tourist destination is a result of cooperation among Chongmek community members. It is developed further from the glowing temple into the glowing town, filled with glowing artworks.

- 🕒 Everyday
- ☎ (+66) 84 513 5577
- 📍 <https://goo.gl/maps/jJmRw4XoyAFrcwyb9>



Sirindhorn Dam Nature Walkway

This photogenic check-in spot amid nature and spectacular views by Sirindhorn Dam is a Nature Walkway of 415 meters. The key highlight is a glass walkway that boasts the most stunning views.

- 🕒 Everyday 09:00 AM - 05:00 PM
- 📍 <https://goo.gl/maps/RQFzwnMuC8VtgWeW7>





- LOCAL ATTRACTIONS -

Pha Taem National Park

This national park is located in the easternmost region of Thailand. In addition to Pha Chanadai cliff, the best vantage point to watch the sunrise, it is also home to prehistoric cave paintings and unseen century-old naturals.

- 🕒 Everyday 06:00 AM - 06:00 PM.
- ☎ (+66) 4525 2581
- 📍 อุทยานแห่งชาติผาแต้ม Phataem National Park
- 📍 <https://goo.gl/maps/Fpd8aLUFXAo2Tqxo7>



All Aglow in Ubon's Blooming Cannabis Community

Witness the marvelous natural phenomenon and glowing town of Chong Mek Community. Check in at the vantage point for the precious views at the Skywalk, Sirindhorn Dam. Visit Pha Taem National Park to see the prehistoric cave paintings. Learn more at the cannabis community enterprise. Visit the smart farm for medical cannabis cultivation.

DAY 1

AMAZING ILLUMINATED TREE-NATURE WALKWAY

Witness the Marvel of the Glowing Town of "Chong Mek Community" and Check in at the Skywalk, Sirindhorn Dam



In the morning, meet at Ubon Ratchathani Airport.

Pay homage to Phra Chao Yai In Plaeng, the respected Buddha statue at Wat Maha Wanaram Temple.

At noon, enjoy the Vietnamese cuisine at Indochin Restaurant.

In the afternoon, stop by to sip some drinks at the cafe in Thai house style at Arom Sawang Cafe, Sawang Wirawong district.

Shop for silk at Baan Suan Tontian Mai Tahai.

Enjoy the amazing view of the bi-colored river "Khong Si Poon, Moon Si Kram". Check in at Tohsang Heritage Khongjiam.

In the evening, visit the glowing city, the new tourist destination called Chongmek Renovate in the heart of Chong Mek.

Visit the learning center for medical cannabis cultivation at Akilantang.

Stop by and check out the skywalk, Sirindhorn Dam.

At dusk, travel to Wat Sirindhorn Wararam Phu Prao Temple to witness the beauty of the glowing town.

Enjoy the dinner of Mae Khong fish menus at Araya Restaurant, Sirindhorn Dam.

Return to the accommodation.

DAY 2

STREET ART UBON - PREHISTORIC CAVE PAINTINGS

View Ubon Street Art Project and Cave Paintings at "Pha Taem"

In the morning, have breakfast at the hotel restaurant.

Visit Pha Taem National Park to see the prehistoric cave paintings.

Pay homage to Luang Pu Khamkhaning at Wat Tham Khuha Sawan Temple and see the world's largest gong.

At noon, enjoy lunch at Peerada Cafe, Khong Chiam subdistrict.

In the afternoon, sip a coffee at the well-known Godfather Coffee.

Do not miss drinks brewed by Syphon (by Appointment only).

Enjoy relaxing massage sessions at Tien Hom massage shop, Bordin Hotel branch.

In the evening, take a stroll to see some building graffiti at Ubon Street Art Project.

Enjoy dinner at Chomchan Restaurant.

Stay at Arista Hotel Ubon.



DAY 3

CANNABIS FARM TOUR - VISIT WAT THUNG SI MUENG

Visit the "Cannabis" Farm, Donchart Community Enterprise, and Hor Trai Klang Nam, Wat Thung Si Muang Temple

In the morning, have breakfast at the accommodation.

Learn more at Kaset Donchart Phuedplodphai Community Enterprise, Warin Chamrap district, the medical cannabis learning and cultivation site under the Department of Thai Traditional And Alternative Medicine.

At noon, have lunch at Khrua Khao Nim Restaurant.

In the afternoon, visit Wat Thung Si Muang Temple at the heart of Ubon city.

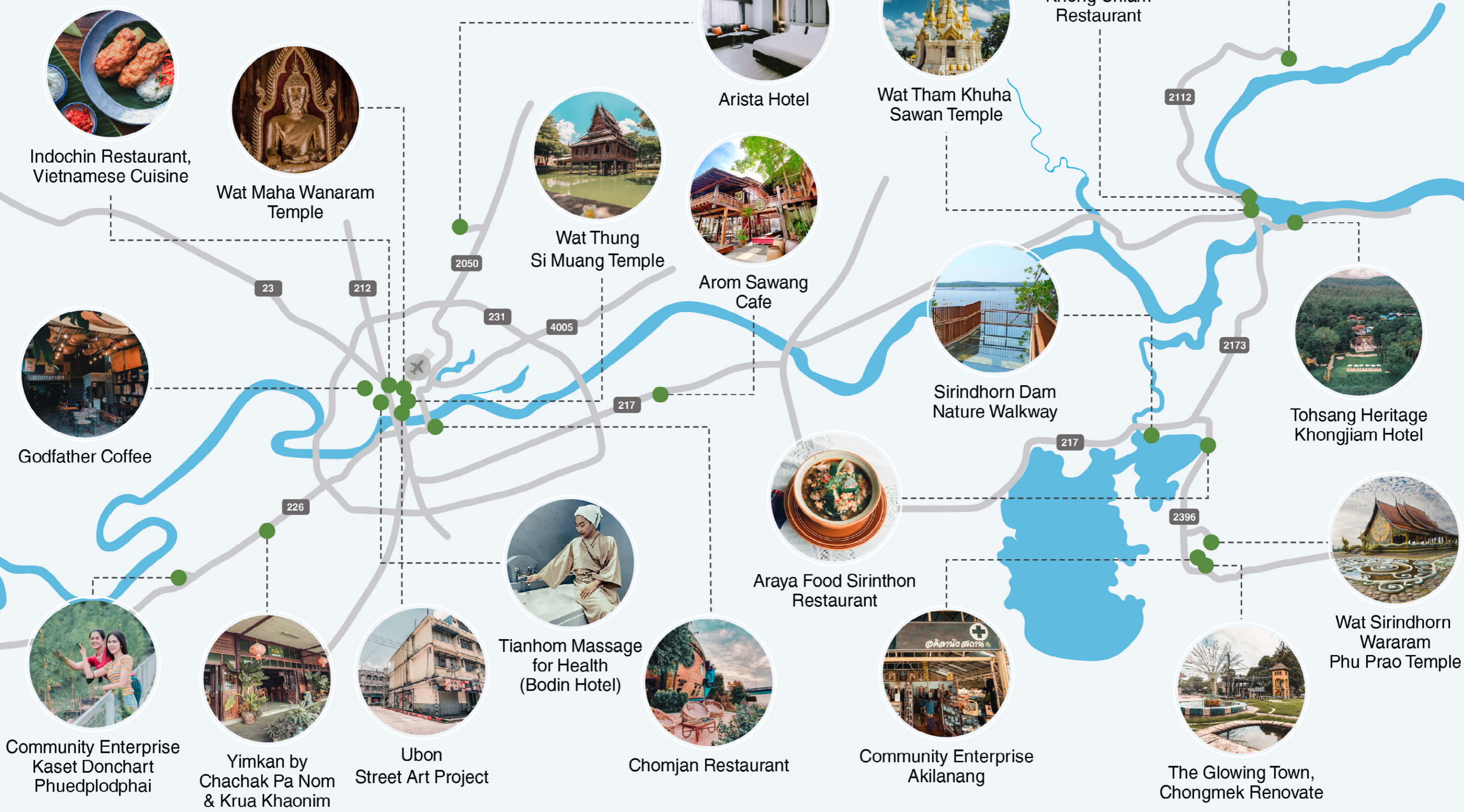
Pay a visit to the religious place Hor Trai Klang Nam, the Tripitaka Hall, with fascinating wall paintings.

In the evening, shop OTOP products for souvenirs such as Guay Jub Noodles, pork sausage, fermented pork, etc.

Return safely to Bangkok.

Cannabis *Travel Experience*

📍 Ubon Ratchathani





- FOLLOW THE WAY OF THE CANNABIS-HEMP CHONBURI TRAVEL EXPERIENCE -

Chonburi, City of Cannabis



- LEARNING, CULTIVATION & MEDICAL CANNABIS EXTRACTION SITES -

FEATURING A POPULAR CANNABIS-HEMP MENU

Goldenleaf Hemp

This comprehensive cannabis business learning center, is an agritourism destination that comprehensively offers knowledge related to cannabis as an economic crop from upstream to downstream, or other areas of business expansion as well as exports.

- 🕒 Everyday 09:00 AM - 07:00 PM
- ☎ (+66) 94 354 9916
- 📍 Goldenleaf Hemp
- 📍 <https://goo.gl/maps/VPL4kJCx2LUTGZtG6>



Miracle Cannabis Land (Legend Siam)

A Thai cultural theme park where you get to travel back in time through Thai traditional costumes, The center of comprehensive cannabis-related knowledge that will completely change your perspective on cannabis.



- 🕒 Monday - Friday 10:00 AM - 06:00 PM
Saturday - Sunday 10:00 AM - 08:00 PM
- ☎ (+66) 3307 3333
- 📍 Legend Siam
- 📍 <https://g.page/LegendSiam?share>



- CANNABIS-HEMP PRODUCTS & SERVICES AVAILABLE AT THESE ESTABLISHMENTS -

CANNABIS- & HEMP-RELATED SERVICES OFFERED HERE

GanjaWitch Shop

This beachside cannabis café in Pattaya by GanjaWitch from the USA carries processed cannabis products by a community enterprise. Customers will also get to learn about the accurate medical use of cannabis.



- 🕒 Everyday 09:00 AM - 09:00 PM
- ☎ (+66) 65 674 1555
- ☎ (+66) 65 668 3999
- 📍 GanjaWitch Shop
- 📍 <https://goo.gl/maps/GLbHxFnKH29hxgpj7>



FEATURING A POPULAR CANNABIS-HEMP MENU

Da Re Japanese Restaurant and Dee Beach Restaurant, D Varee Jomtien Beach, Pattaya

Explore the international marijuana dining experience and new menus, such as cannabis sushi at Da Re Japanese Restaurant. Enjoy the panoramic view, while sipping cannabis-infused drinks and enjoying the background music.



Dee Beach by D Varee Jomtien Beach Pattaya

- 🕒 Everyday 10:00 AM - 10:00 PM
- ☎ (+66) 3841 8999
- 📍 Dee Beach by D Varee Jomtien Beach Pattaya
- 📍 <https://goo.gl/maps/Y3mU46GizcfgyijT8>

DaRe Japanese Restaurant

- 🕒 Wednesday - Monday 12:00 AM - 09:00 PM (Closed on Tuesday)
- ☎ (+66) 3841 8999
- 📍 DaRe Japanese Restaurant
- 📍 <https://goo.gl/maps/Y3mU46GizcfgyijT8>

CANNABIS- & HEMP-RELATED SERVICES OFFERED HERE

Luminous Spa at Cape Dara Resort, Pattaya

Cannabis Massage is the spa treatment that offers ultimate relaxation to you, with CBD oil and rosemary extracts, which help alleviate muscle, your physical and mental well-being.

- 🕒 Monday - Thursday 10:00 AM - 08:00 PM
- 🕒 Friday - Sunday 10:00 AM - 09:00 PM
- ☎ (+66) 3893 3888
- 📍 Cape Dara Resort, Pattaya
- 📍 <https://g.page/CapeDara?share>





- NEARBY ENTERPRISES -

Praneat Restaurant

This Thai loft-style restaurant serves both authentic and modern Thai cuisine created through meticulous cooking methods with full flavors and Thai spices.

- Everyday 11:00 AM - 10:00 PM
- (+66) 80 044 8238
- Praneat Seafood ร้านอาหารประณีต
- <https://g.page/praneatrestaurant?share>



Cape Dara Resort Pattaya

Guests here are drawn to luxurious accommodation experiences and may indulge in exclusivity from the provided seaview rooms. This place is surrounded by abundant nature that offers a sense of refreshment to guests.

- Always Open
- (+66) 3893 3888
- Cape Dara Resort, Pattaya
- <https://g.page/CapeDara?share>

The Oxygen Beachfront Oasis

This beachside restaurant and café in Pattaya offer delicious food, desserts, and drinks amid the stunning nature of the clear sky and beach breezes as well as a serene and secluded atmosphere.

- Everyday 10:00 AM - 10:00 PM
- (+66) 63 174 9399
- The Oxygen Pattaya
- <https://goo.gl/maps/eTagoMzizkSow4wW7>



Baan Keing Lae Restaurant

This affordable restaurant with extraordinary views along Sriracha beach offers international and seafood menus that are fresh, clean, and delicious. Enjoy the food and drinks while listening to the sound of waves and observing the multicolor sky at sunset.

- Everyday 10:30 AM - 10:00 PM
- (+66) 64 939 4465
- บ้านเคียงทะเล
- <https://goo.gl/maps/1iBF1Lqhi5rd2SWg8>





- CHONBURI PROGRAM OF THE CANNABIS-HEMP TRAVEL EXPERIENCE -



Chonburi, City of Cannabis

Experience the wonders of Chonburi as Miracle Cannabis Land, specifically in Pattaya. Visit the world-class hemp-cannabis learning site. Enjoy cannabis oil massage programs from a secret recipe from luxurious Cape Dara Resort. Learn about hemp-cannabis cultivation processes from upstream to downstream at Goldenleaf Hemp Sriracha. Do not miss a shopping spree at GanjaWitch Shop, the first comprehensive cannabis shopping place in Thailand and Asia.

DAY 1

CANNABIS, HERBAL HEALTH

Learn about cannabis planting processes. Experience highly exclusive cannabis oil spa sessions.

In the morning, meet at the assembly point.

Have breakfast. Depart for Chonburi province.

Visit Goldenleaf Hemp, the comprehensive hemp-cannabis learning center.

At noon, relish the spicy seafood of authentic Sriracha recipes at Baan Kiang Lay Restaurant.

Check in at the luxurious Cape Dara Resort.

Relax with highly exclusive cannabis spa treatments at Luminous Spa.

In the evening, dine with sea views at The Oxygen Beachfront Oasis.



DAY 2

SHOPPING & LEISURE

Shop for cannabis products. Be satiated with delicious cannabis menus for health.

In the morning, have breakfast.

Check out.

Shop for souvenirs at GanjaWitch Shop, the first comprehensive cannabis shop in Thailand and Asia.

At noon, have lunch with cannabis menus at Da Re Japanese Restaurant and Dee Beach Restaurant, D Varee Jomtien Beach Pattaya Hotel.

Or dine with original Thai herbal cuisine at Praneat Restaurant.

In the afternoon, visit Miracle Cannabis Land at Legend Siam Pattaya, the world-class hemp-cannabis learning center. (Legend Siam)

In the evening, return to Bangkok.

Cannabis *Travel Experience*

Chonburi



Baan Keing Lae
Restaurant



Cape Dara
Resort Pattaya



The Oxygen
Beachfront Oasis



D Varee Jomtien Beach,
Pattaya



Goldenleaf Hemp



GanjaWitch Shop



Praneat Restaurant



Miracle Cannabis Land
(Legend Siam)



- FOLLOW THE WAY OF THE CANNABIS-HEMP PHUKET TRAVEL EXPERIENCE -

Pull Up in Phuket's Cannabis Wonderland





- LEARNING, CULTIVATION & MEDICAL CANNABIS EXTRACTION SITES -



Herbal Health Tourism, Phuket (Cannabis Phuket by HHT)

An organic cannabis farm for medical and scientific purposes, with comprehensive quality control in place. It is open to interested visitors to learn the correct uses of cannabis for health.

- Everyday 08:00 AM - 05:30 PM
- (+66) 81 391 9545
- Cannabis Phuket by HHT
- <https://goo.gl/maps/2QE5RykhNiJMGFAH8>



- FULL-SERVICE CANNABIS-HEMP SPA -



CANNABIS- & HEMP-RELATED SERVICES OFFERED HERE

Anantara Layan Phuket Resort

Relax peacefully and privately on heavenly Layan Island. Enjoy the satisfying cannabis oil massages at Anantara Spa and experience new activities in Phuket.

- Always Open
- (+66) 7631 7200
- Anantara Layan Phuket Resort
- <https://g.page/anantalalayanphuket?share>





- NEARBY ENTERPRISES -



Oasis Spa (Turquoise Cove Spa, Kamala)

This spa is uniquely stunning and remarkable with the highlighted use of turquoise and white colors as its key features. There are also double outdoor rain showers, Thai-style steam rooms, and a large outdoor pool.

- 🕒 Everyday 11:00 AM - 07:00 PM
- ☎ (+66) 7633 7777
- 📍 Oasis Spa (Turquoise Cove Spa, Kamala)
- 📍 <https://goo.gl/maps/JKCTMjsMAeDaxNrcA>



Blue Elephant Restaurant, Phuket

This Southern Thai restaurant offers award-winning, delicious menus as well as professional Thai cooking classes by experienced chefs who exclusively share their cooking tips.

- 🕒 Everyday 11:00 AM - 07:00 PM
- ☎ (+66) 7635 4355
- 📍 Blue Elephant Phuket
- 📍 <https://goo.gl/maps/ztmDA6e6TkpUT8g69>

Phuket Marriott Resort and Spa, Nai Yang Beach

Indulge in the exclusive views of Andaman Sea along the northwest coast of Phuket. Beat the heat in the spacious outdoor pool. And join healthy activities provided by the hotel.

- 🕒 Always Open
- ☎ (+66) 7662 5555
- 📍 Phuket Marriott Resort and Spa, Nai Yang Beach
- 📍 <https://goo.gl/maps/VQNB8Gap19sSuK17>





- LOCAL ATTRACTIONS -



Banana Beach, Koh Hey

Experience the stunning Phuket sea with its abundant marine resources still intact at the popular conservative tourism sites such as renowned Koh Hey. Enjoy the day trip covering snorkeling, kayaking, parasailing.

- ☎ (+66) 81 416 7555
- 📍 Banana Beach
- 📍 <https://goo.gl/maps/ibB2PnzqZ63upUpS8>



Old Town Phuket Tourism Community

Usually take a stroll amid the classic atmosphere of classic Sino-European style buildings with a well-kept sense of the past in the perfect combination with the modern downtown mood.



- 🕒 Everyday
- ☎ (+66) 7621 1230, (+66) 84 305 3960
- 📍 วิสาหกิจชุมชนท่องเที่ยวย่านเมืองเก่าภูเก็ต
- 📍 <https://goo.gl/maps/cZ4PdDiqGq6uez3t8>



Hanuman World

This trip to the world of adventures will certainly be imprinted on the mind of visitors who love conservation. There are various activities for all family members, with up-to-date equipment of global safety standards in use.

- 🕒 Everyday 08:00 AM - 06:00 PM
- ☎ (+66) 62 979 5533
- 📍 Hanuman World
- 📍 <https://goo.gl/maps/FHQ3QgFhXww3cz3L7>





Pull Up in Phuket's Cannabis Wonderland

Expand your worldview with Cannabis Phuket By HHT: explore and access the knowledge related to cannabis as a new trend as well as a workshop. Be amazed at the land called the Pearl of the Andaman. Indulge in Peranakan civilization. Visit the old town of Phuket and see the beauty of the Sino-Portuguese architecture. Relish delicious and healthy dishes. Enjoy adventures that boost your adrenaline in addition to sea activities and relaxing spa sessions. Indulge in all kinds of happiness.



DAY 1

HERBAL HEALTH - CANNABIS The Wonder of Cannabis, Cannabis Phuket by HHT

In the morning, visit the herb and health tourism community enterprise, Cannabis Phuket By HHT, the largest learning center for comprehensive cannabis knowledge in Thailand.

At lunch, enjoy the herbal menus.

In the afternoon, check in at the supremely luxurious Anantara Layan Phuket Resort.

At leisure or join healthy cannabis spa activities.

In the evening, have a healthy dinner at the accommodation.



DAY 2

RELAX - LEISURE

Get excited with enjoyable adventures and sea activities.

In the morning, have breakfast at the accommodation.

- Join healthy spa programs at the accommodation or other tour activities:
- A: Yachting, sea activities, Banana Beach at Koh Hey + Lunch
- B: Speed boat, sea activities, Banana Beach at Koh Hey + Lunch
- C: Spa at Oasis Turquoise Cove Spa Phuket
- D: Adventure at Hanuman World + lunch at Tree Monkey Restaurant

In the evening, check in at the super luxurious Phuket Marriott Resort and Spa, Nai Yang Beach.

Have a healthy meal at the accommodation.

DAY 3

COOKING CLASS, FOOD & CULTURAL TOUR

Experience Peranakan civilization. Visit the old town. Enjoy and learn about healthy menus.

In the morning, have breakfast at the accommodation.

Join a cooking class at Blue Elephant Cooking Class School & Restaurant.

At lunch, enjoy healthy dishes at Blue Elephant Restaurant, Phuket.

In the afternoon, visit the olden times and learn about the history of Old Phuket. Sip some coffee & drinks, taste local food, and dress in Baba-Yaya traditional costumes. Take photos of the old town. Shop at Lard Yai Walking Street.

In the evening, visitors are accompanied to Phuket Airport or to their accommodation.

Cannabis *Travel Experience*

Phuket



Phuket Marriott Resort and Spa, Nai Yang Beach



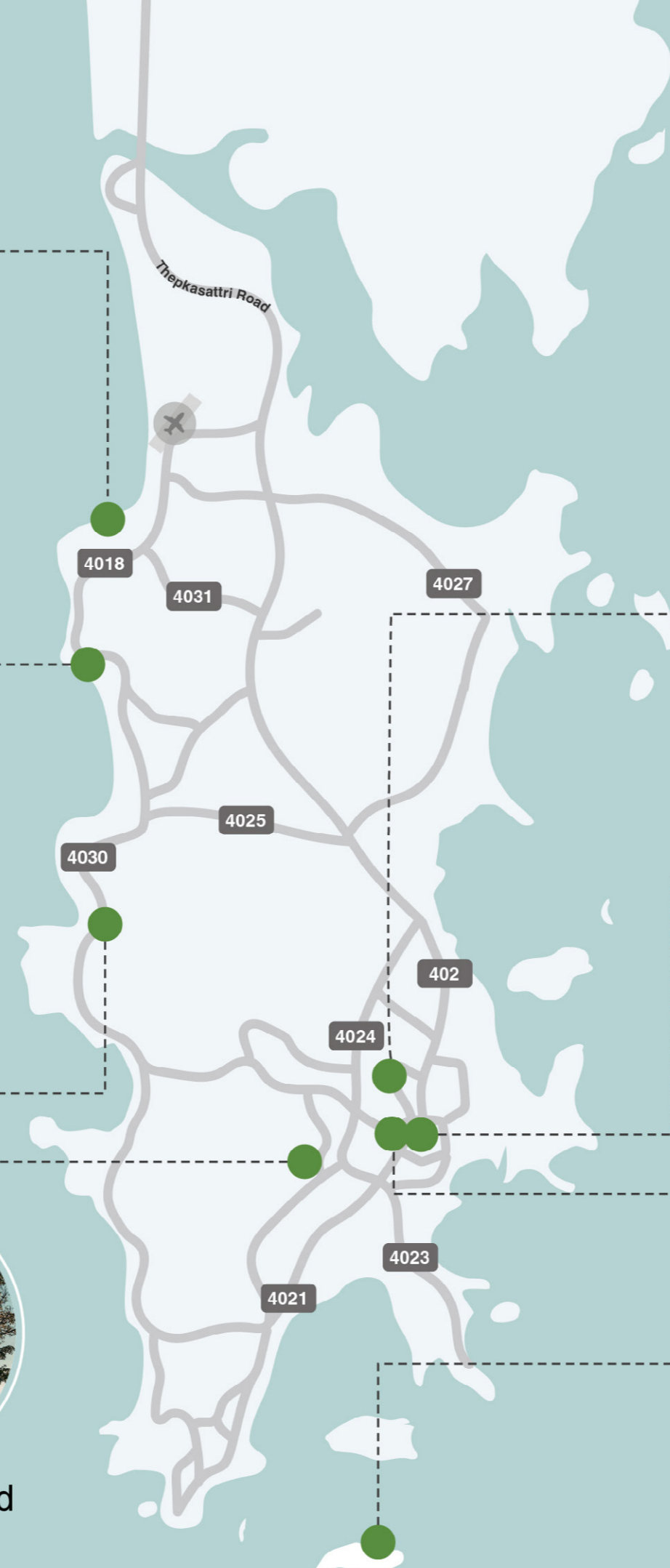
Anantara Layan Phuket Resort



Oasis Spa (Turquoise Cove Spa, Kamala)



Hanuman World



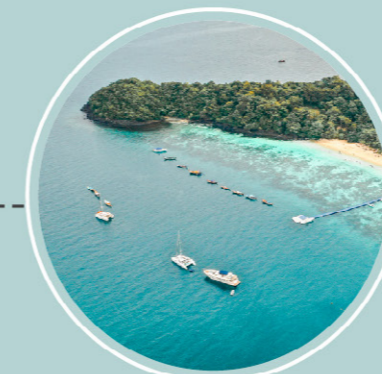
Cannabis Phuket By HHT



Old Town Phuket Tourism Community



Blue Elephant Restaurant, Phuket



Banana Beach, Koh Hey







TOUR CONTACT

SO HAPPY CO., LTD.

Telephone: (+66) 94 156 1424

Facebook: So Happy

Line Official Account: @Sohappy

FRIDAY TRIP COMPANY LIMITED

Telephone: (+66) 88 008 2906

Facebook: Friday Trip

Line id: fridaytrip

SRIDARA TOUR COMPANY LIMITED

Telephone: (+66) 82 365 6514,

(+66) 81 996 6852, (+66) 81 456 4636

Facebook: ศรีดาราทัวร์ อำนาจเจริญ

Line Official Account: @sridaratour

UDACHI CO.,LTD.

Telephone: (+66) 85 245 2458

Facebook: Udachi Thailand

Line Official Account: @udachi

